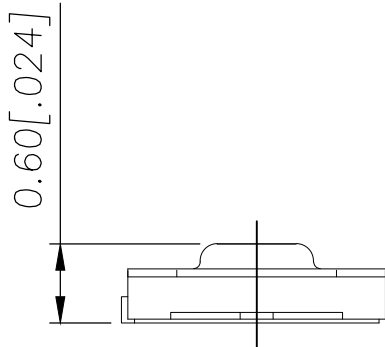
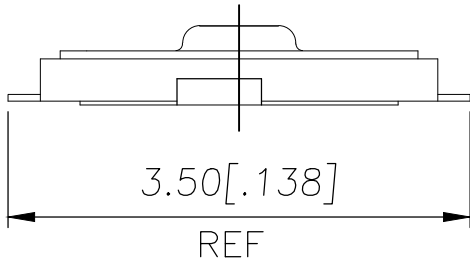
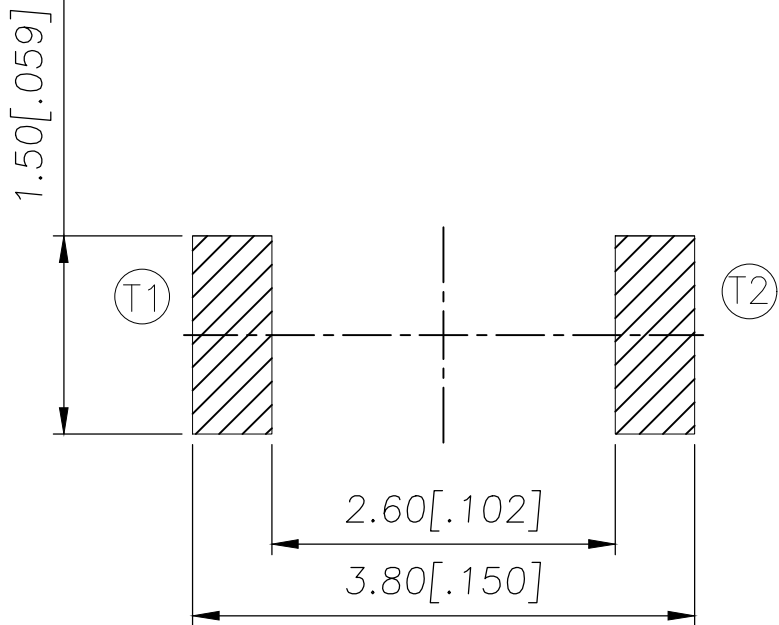
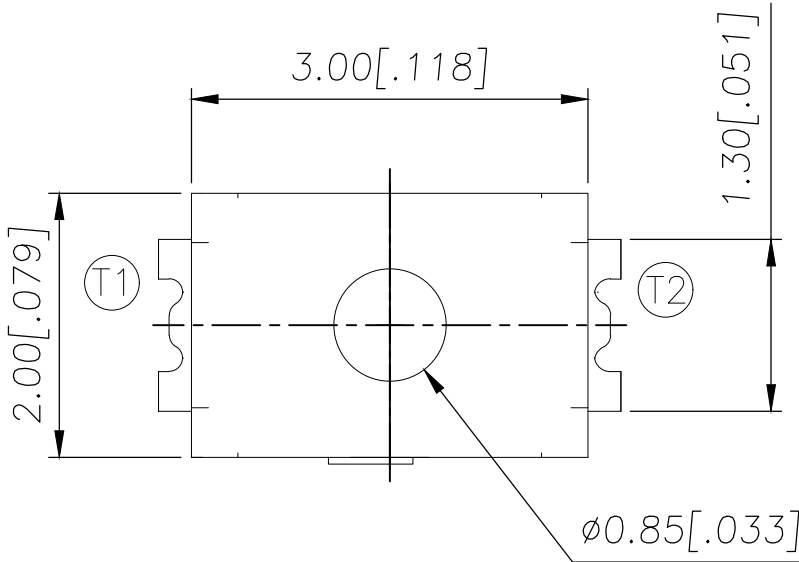
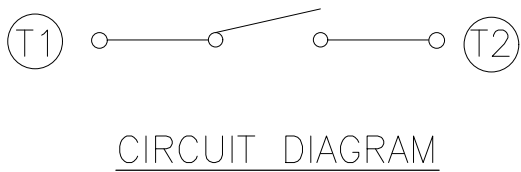

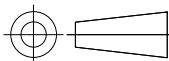


| REVISIONS | | | | | |
|-----------|-----|---------------------------|-----------|-----|------|
| P | LTR | DESCRIPTION | DATE | DWN | APVD |
| | B | REVISED PER ECR-19-004770 | 10APR2019 | SR | DD |



| | | |
|----------------------|-------------------|-------------|
| 240±50 | USLPT3020DT6TR | 2337230-3 |
| 180±50 | USLPT3020DT3TR | 2337230-2 |
| 160±50 | USLPT3020DT2TR | 2337230-1 |
| ACTUATION FORCE (gf) | SMART PART NUMBER | PART NUMBER |

| | | | | | | | | | |
|---|--|---|--|--|--|-----------|------------|---------------|-----|
| THIS DRAWING IS A CONTROLLED DOCUMENT. | | DWN GANESH C M 04JUL2018 | |  TE Connectivity Ltd. | | | | | |
| | | CHK ALEXANDER SHARPE 04JUL2018 | | | | | | | |
| DIMENSIONS: mm [INCHES] | | TOLERANCES UNLESS OTHERWISE SPECIFIED: 0 PLC ± - 1 PLC ± - 2 PLC ± 0.1 [.004] 3 PLC ± - 4 PLC ± - ANGLES ± - | | NAME | | | | | |
|  | | | | APVD ALEXANDER SHARPE 04JUL2018 | | | | | |
| | | | | PRODUCT SPEC | | | | | |
| | | | | — | | | | | |
| | | | | APPLICATION SPEC | | | | | |
| MATERIAL — | | FINISH — | | SIZE | | CAGE CODE | DRAWING NO | RESTRICTED TO | |
| | | | | A3 | | 00779 | C=2337230 | — | |
| | | | | CUSTOMER DRAWING | | | | SCALE | NTS |

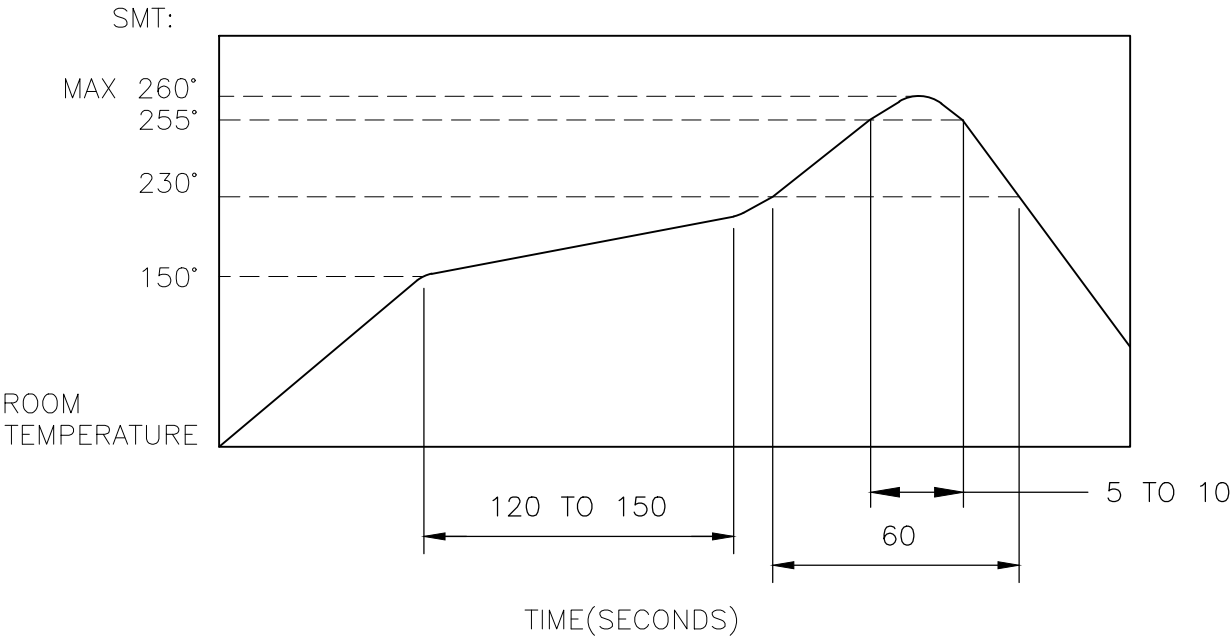
| REVISIONS | | | | | |
|-----------|-----|-------------|------|-----|------|
| P | LTR | DESCRIPTION | DATE | DWN | APVD |
| | — | SEE SHEET 1 | — | — | — |

NOTES:

1. MATERIALS:
TERMINAL: COPPER ALLOY, SILVER FINISH
BASE: THERMOPLASTIC, BLACK
TAPE: POLYIMIDE
ACTUATOR: POLYIMIDE
CONTACT: STAINLESS STEEL, SILVER FINISH
2. COMPLIANCE:
ALL MATERIALS AND FINISHES SHALL COMPLY WITH
EU DIRECTIVE 2002/95/EC OF 27JAN2003(RoHS)
3. SPECIFICATIONS:
RATING: 10 μ A, 1V DC MINIMUM TO 50 mA, 12V DC MAXIMUM
CONTACT RESISTANCE: 500m Ω MAXIMUM (INITIAL)
INSULATION RESISTANCE: 100M Ω MINIMUM (INITIAL)
DIELECTRIC STRENGTH: 100V AC, 1 MINUTE
OPERATING LIFE: 300,000 CYCLES WITH LOAD
TRAVEL: 0.13 \pm 0.05 [.005 \pm .002]
ACTUATION FORCE: 2337230-1 = 160 \pm 50gf
2337230-2 = 180 \pm 50gf
2337230-3 = 240 \pm 50gf

OPERATING TEMPERATURE: -40° TO 85°C
STORAGE TEMPERATURE: -40° TO 85°C

4. SOLDER CONDITIONS:



THE CONDITION NOTED ABOVE IS THE TEMPERATURE OF THE COPPER FOIL ON THE SURFACE OF THE PCB. THERE ARE CASES WHERE THE TEMPERATURE OF THE BOARD GREATLY DIFFERS FROM THE SURFACE OF THE SWITCH. DO NOT ALLOW THE SURFACE TEMPERATURE OF THE SWITCH TO EXCEED 260°C.

MANUAL SOLDERING:

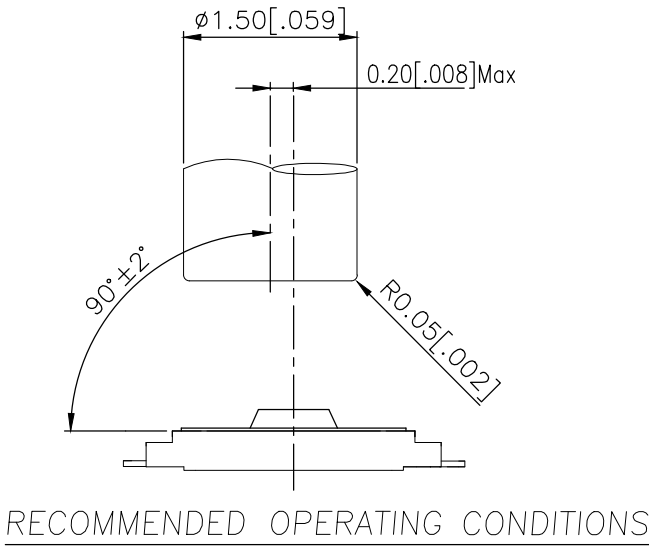
| | |
|---------------------------|-------------------|
| SOLDERING TEMPERATURE | 350°C MAXIMUM |
| CONTINUOUS SOLDERING TIME | 5 SECONDS MAXIMUM |

HANDLING PRECAUTIONS:

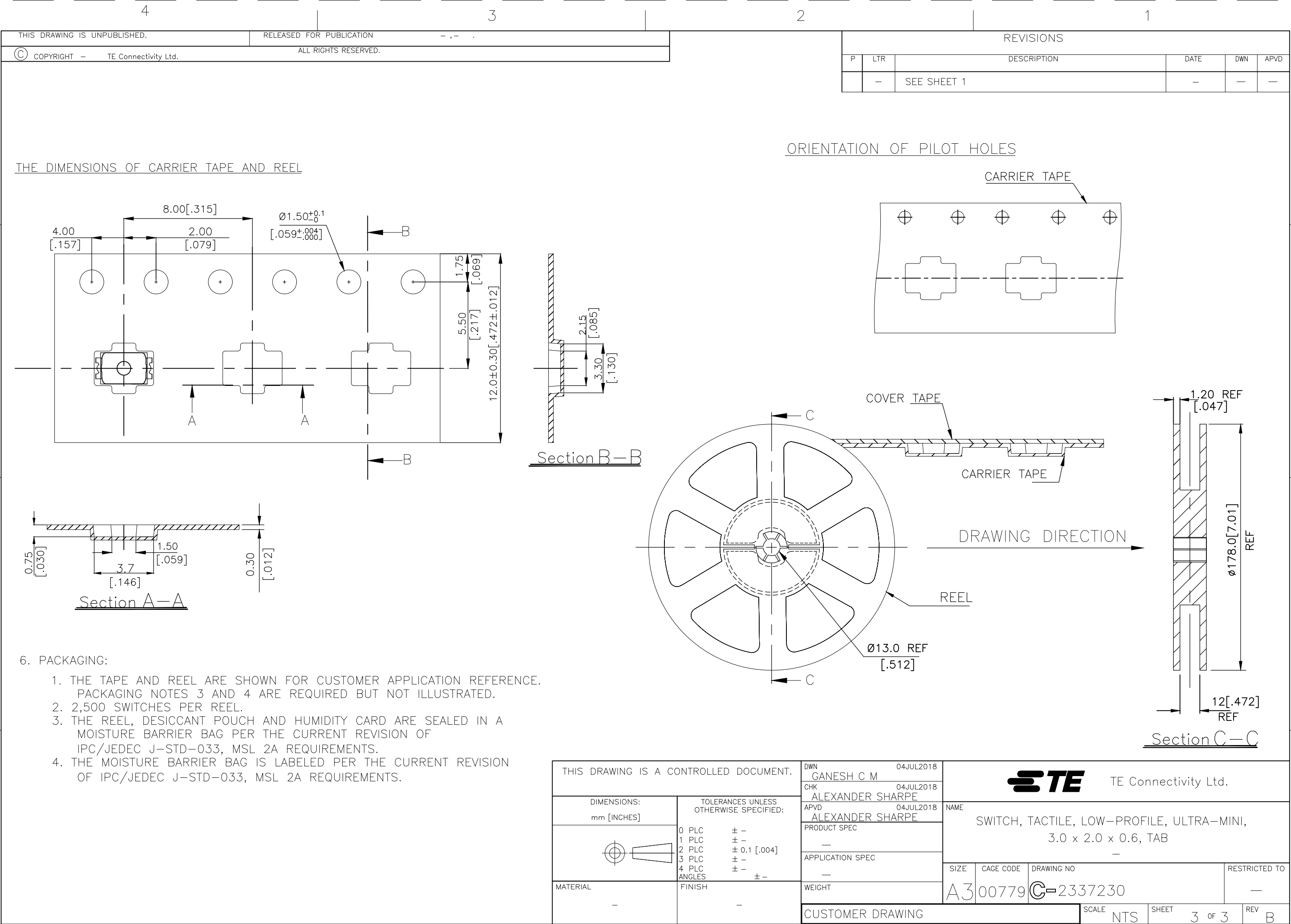
1. CARE SHOULD BE EXERCISED SO THAT FLUX FROM THE TOP SURFACE OF THE PRINTED CIRCUIT BOARD DOES NOT ADHERE TO THE SWITCH.
2. DO NOT WASH THE SWITCH

5. OPERATING PRECAUTIONS:

1. DO NOT ACTUATE THE SWITCH WITH EXCESSIVE FORCE
2. DISCONTINUE FORCE AFTER THE SWITCH HAS BEEN ACTUATED SO AS TO AVOID DEFORMATION OF THE COMPONENTS OF THE SWITCH. DEFORMATION OF THE COMPONENTS MAY CAUSE THE SWITCH TO MALFUNCTION.
3. ALIGN THE PLUNGER WITH THE SWITCH TO INSURE PROPER OPERATION



| | | | | | |
|--|--|---------------------------------------|---|--------------------|-------------------------|
| THIS DRAWING IS A CONTROLLED DOCUMENT. | | DWN GANESH C M 04JUL2018 | TE Connectivity Ltd. | | |
| | | CHK ALEXANDER SHARPE 04JUL2018 | | | |
| DIMENSIONS: mm [INCHES] | TOLERANCES UNLESS OTHERWISE SPECIFIED: | APVD ALEXANDER SHARPE 04JUL2018 | NAME SWITCH, TACTILE, LOW-PROFILE, ULTRA-MINI, 3.0 x 2.0 x 0.6, TAB | | |
| | 0 PLC \pm — 1 PLC \pm — 2 PLC \pm 0.1 [.004] 3 PLC \pm — 4 PLC \pm — ANGLES \pm — | PRODUCT SPEC — | — | | |
| | FINISH — | APPLICATION SPEC — | SIZE A3 | CAGE CODE 00779 | DRAWING NO C-2337230 |
| MATERIAL — | | WEIGHT | RESTRICTED TO — | | |
| CUSTOMER DRAWING | | | SCALE NTS | SHEET 2 OF 3 | REV B |



THE DIMENSIONS OF CARRIER TAPE AND REEL

Section A-A

Section B-B

ORIENTATION OF PILOT HOLES

CARRIER TAPE

COVER TAPE

CARRIER TAPE

6. PACKAGING:

1. THE TAPE AND REEL ARE SHOWN FOR CUSTOMER APPLICATION REFERENCE. PACKAGING NOTES 3 AND 4 ARE REQUIRED BUT NOT ILLUSTRATED.

2. 2,500 SWITCHES PER REEL.

3. THE REEL, DESICCANT POUCH AND HUMIDITY CARD ARE SEALED IN A MOISTURE BARRIER BAG PER THE CURRENT REVISION OF IPC/JEDEC J-STD-033, MSL 2A REQUIREMENTS.

4. THE MOISTURE BARRIER BAG IS LABELED PER THE CURRENT REVISION OF IPC/JEDEC J-STD-033, MSL 2A REQUIREMENTS.

THIS DRAWING IS A CONTROLLED DOCUMENT.

DIMENSIONS:
mm [INCHES]

MATERIAL
-

TOLERANCES UNLESS OTHERWISE SPECIFIED:

0 PLC ± -

1 PLC ± -

2 PLC ± 0.1 [.004]

3 PLC ± -

4 PLC ± -

ANGLES ± -

FINISH -

DWN GANESH C M 04JUL2018

CHK ALEXANDER SHARPE 04JUL2018

APVD ALEXANDER SHARPE 04JUL2018

PRODUCT SPEC

APPLICATION SPEC

WEIGHT

CUSTOMER DRAWING

TE Connectivity Ltd.

NAME
SWITCH, TACTILE, LOW-PROFILE, ULTRA-MINI,
3.0 x 2.0 x 0.6, TAB

SIZE A3
CAGE CODE 00779
DRAWING NO C-2337230

RESTRICTED TO
-

SCALE NTS
SHEET 3 OF 3
REV B

REEL

Ø13.0 REF [.512]

Ø178.0 [7.01] REF

12 [.472] REF

1.20 REF [.047]

DRAWING DIRECTION

Section C-C

1470-19 (1/15)

Mouser Electronics

Authorized Distributor

Click to View Pricing, Inventory, Delivery & Lifecycle Information:

[TE Connectivity:](#)

[USLPT3020DT6TR](#)