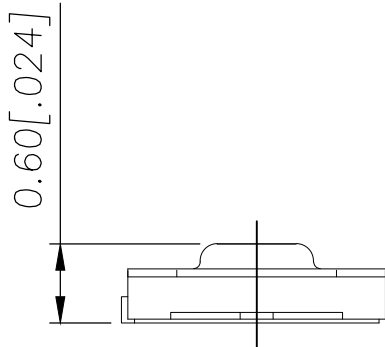
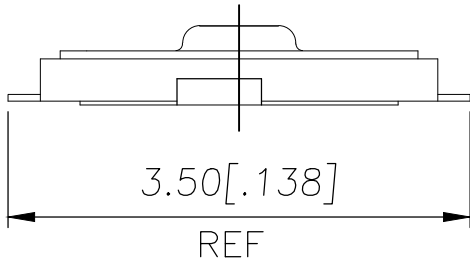
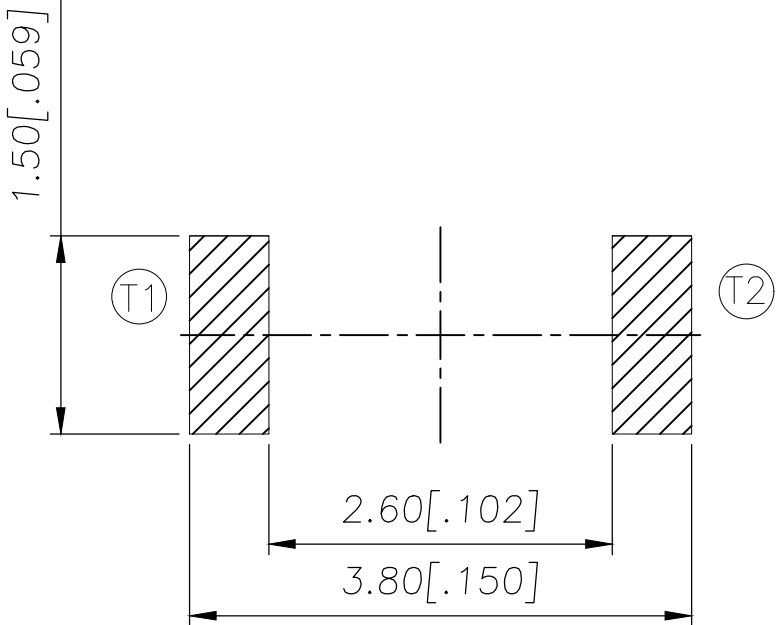
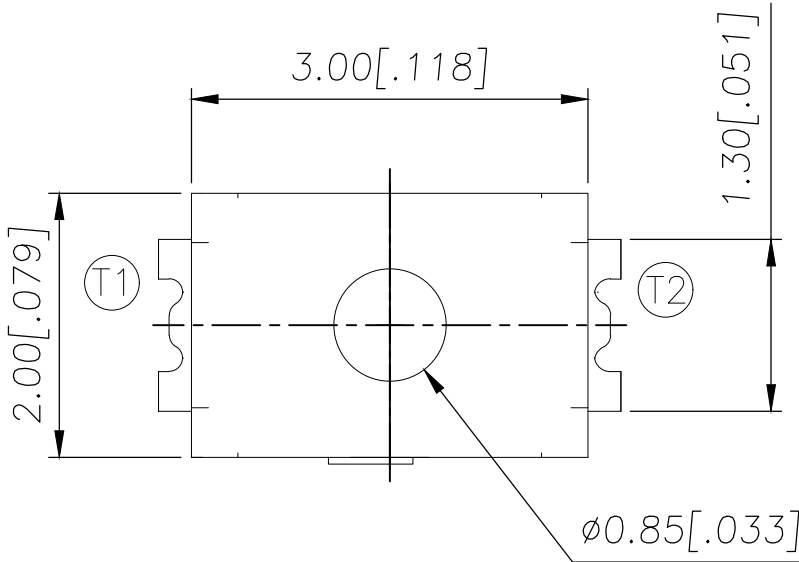
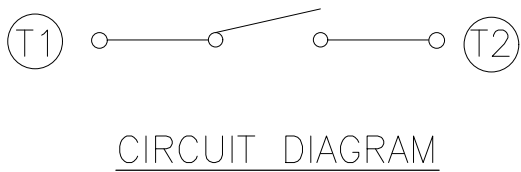

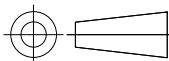


REVISIONS					
P	LTR	DESCRIPTION	DATE	DWN	APVD
	B	REVISED PER ECR-19-004770	10APR2019	SR	DD



240±50	USLPT3020DT6TR	2337230-3
180±50	USLPT3020DT3TR	2337230-2
160±50	USLPT3020DT2TR	2337230-1
ACTUATION FORCE (gf)	SMART PART NUMBER	PART NUMBER

THIS DRAWING IS A CONTROLLED DOCUMENT.		DWN GANESH C M 04JUL2018	 TE Connectivity Ltd.		
DIMENSIONS: mm [INCHES]	TOLERANCES UNLESS OTHERWISE SPECIFIED:	CHK ALEXANDER SHARPE 04JUL2018	NAME SWITCH, TACTILE, LOW-PROFILE, ULTRA-MINI, 3.0 x 2.0 x 0.6, TAB —		
		APVD ALEXANDER SHARPE 04JUL2018			
	0 PLC ± — 1 PLC ± — 2 PLC ± 0.1 [.004] 3 PLC ± — 4 PLC ± — ANGLES ± —	PRODUCT SPEC —	SIZE A3		
		APPLICATION SPEC —			
		MATERIAL —	FINISH —	DRAWING NO C=2337230	
CUSTOMER DRAWING			SCALE NTS	SHEET 1 of 3	REV B

REVISIONS					
P	LTR	DESCRIPTION	DATE	DWN	APVD
	—	SEE SHEET 1	—	—	—

NOTES:

1. MATERIALS:

TERMINAL: COPPER ALLOY, SILVER FINISH
BASE: THERMOPLASTIC, BLACK
TAPE: POLYIMIDE
ACTUATOR: POLYIMIDE
CONTACT: STAINLESS STEEL, SILVER FINISH

2. COMPLIANCE:

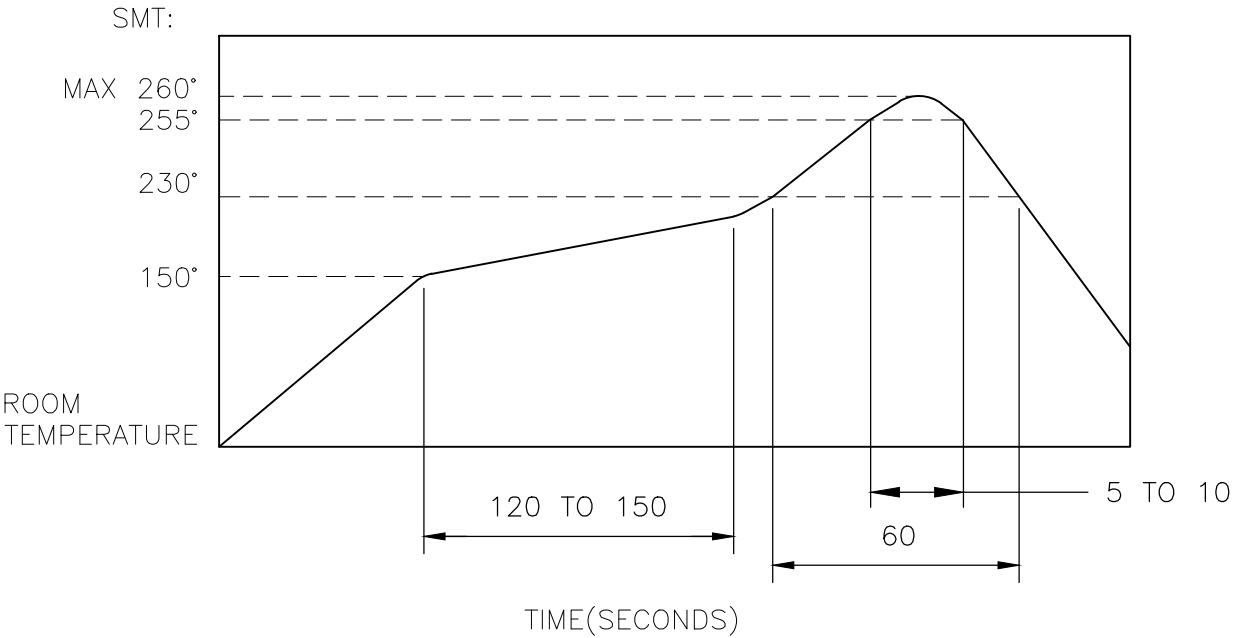
ALL MATERIALS AND FINISHES SHALL COMPLY WITH
EU DIRECTIVE 2002/95/EC OF 27JAN2003(RoHS)

3. SPECIFICATIONS:

RATING: 10 μ A, 1V DC MINIMUM TO 50 mA, 12V DC MAXIMUM
CONTACT RESISTANCE: 500m Ω MAXIMUM (INITIAL)
INSULATION RESISTANCE: 100M Ω MINIMUM (INITIAL)
DIELECTRIC STRENGTH: 100V AC, 1 MINUTE
OPERATING LIFE: 300,000 CYCLES WITH LOAD
TRAVEL: 0.13 \pm 0.05 [.005 \pm .002]
ACTUATION FORCE: 2337230-1 = 160 \pm 50gf
2337230-2 = 180 \pm 50gf
2337230-3 = 240 \pm 50gf

OPERATING TEMPERATURE: -40° TO 85°C
STORAGE TEMPERATURE: -40° TO 85°C

4. SOLDER CONDITIONS:



THE CONDITION NOTED ABOVE IS THE TEMPERATURE OF THE COPPER FOIL ON THE SURFACE OF THE PCB. THERE ARE CASES WHERE THE TEMPERATURE OF THE BOARD GREATLY DIFFERS FROM THE SURFACE OF THE SWITCH. DO NOT ALLOW THE SURFACE TEMPERATURE OF THE SWITCH TO EXCEED 260°C.

MANUAL SOLDERING:

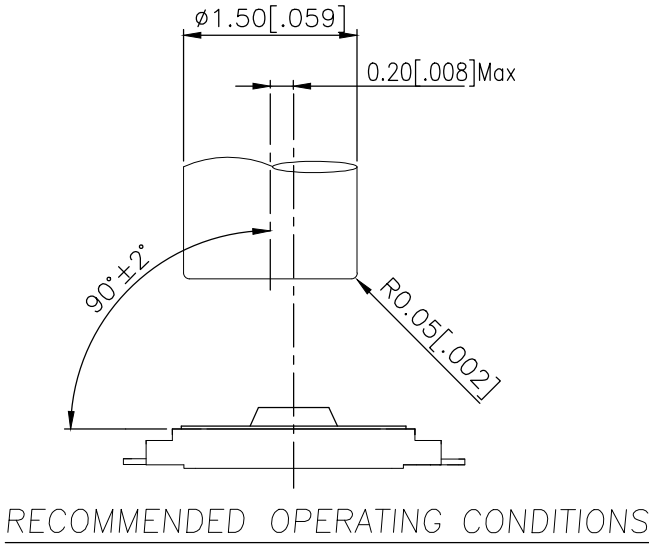
SOLDERING TEMPERATURE	350°C MAXIMUM
CONTINUOUS SOLDERING TIME	5 SECONDS MAXIMUM

HANDLING PRECAUTIONS:

1. CARE SHOULD BE EXERCISED SO THAT FLUX FROM THE TOP SURFACE OF THE PRINTED CIRCUIT BOARD DOES NOT ADHERE TO THE SWITCH.
2. DO NOT WASH THE SWITCH

5. OPERATING PRECAUTIONS:

1. DO NOT ACTUATE THE SWITCH WITH EXCESSIVE FORCE
2. DISCONTINUE FORCE AFTER THE SWITCH HAS BEEN ACTUATED SO AS TO AVOID DEFORMATION OF THE COMPONENTS OF THE SWITCH. DEFORMATION OF THE COMPONENTS MAY CAUSE THE SWITCH TO MALFUNCTION.
3. ALIGN THE PLUNGER WITH THE SWITCH TO INSURE PROPER OPERATION



THIS DRAWING IS A CONTROLLED DOCUMENT.		DWN GANESH C M 04JUL2018	TE Connectivity Ltd.			
		CHK ALEXANDER SHARPE 04JUL2018				
DIMENSIONS: mm [INCHES]		APVD ALEXANDER SHARPE 04JUL2018	NAME SWITCH, TACTILE, LOW-PROFILE, ULTRA-MINI, 3.0 x 2.0 x 0.6, TAB			
		PRODUCT SPEC				
		APPLICATION SPEC				
MATERIAL		WEIGHT	SIZE A3	CAGE CODE 00779	DRAWING NO C-2337230	RESTRICTED TO
			CUSTOMER DRAWING		SCALE NTS	SHEET 2 OF 3
					REV B	

Mouser Electronics

Authorized Distributor

Click to View Pricing, Inventory, Delivery & Lifecycle Information:

[TE Connectivity:](#)

[USLPT3020DT3TR](#)