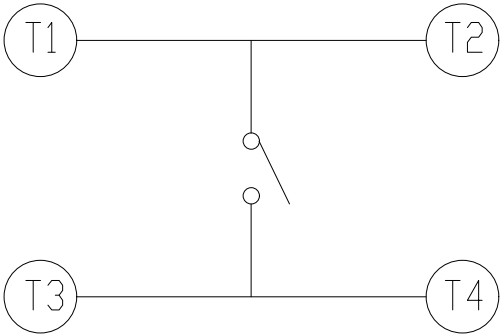
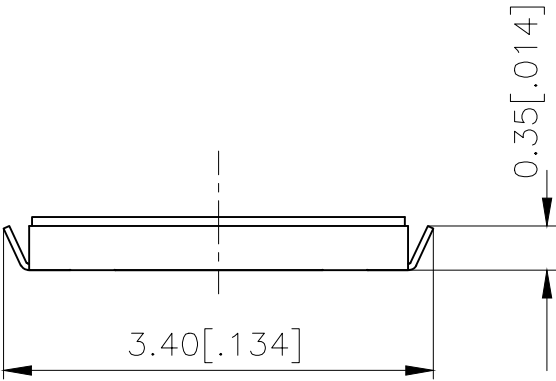
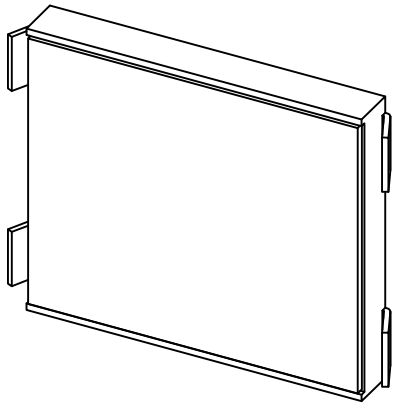
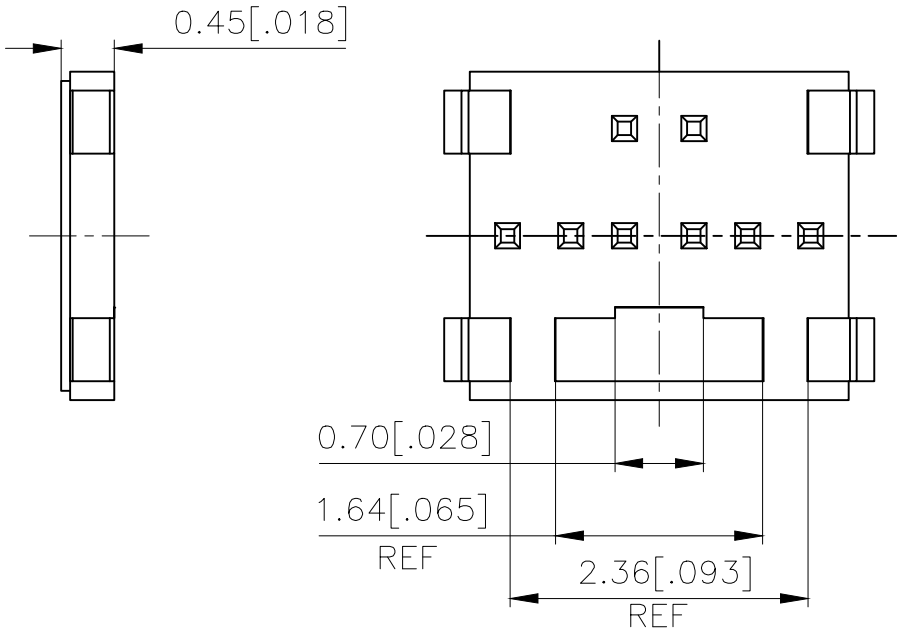
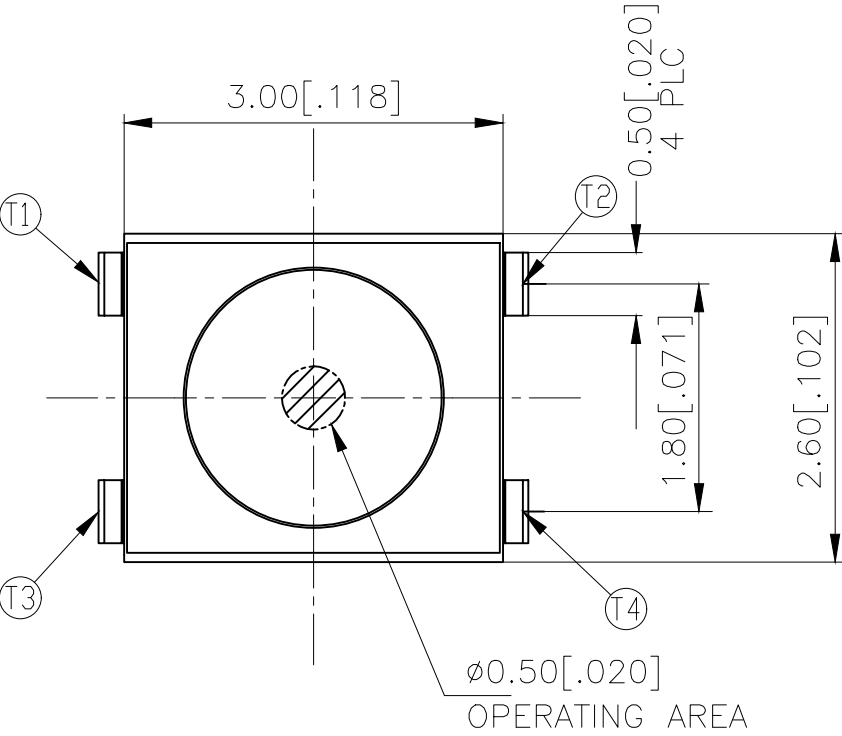
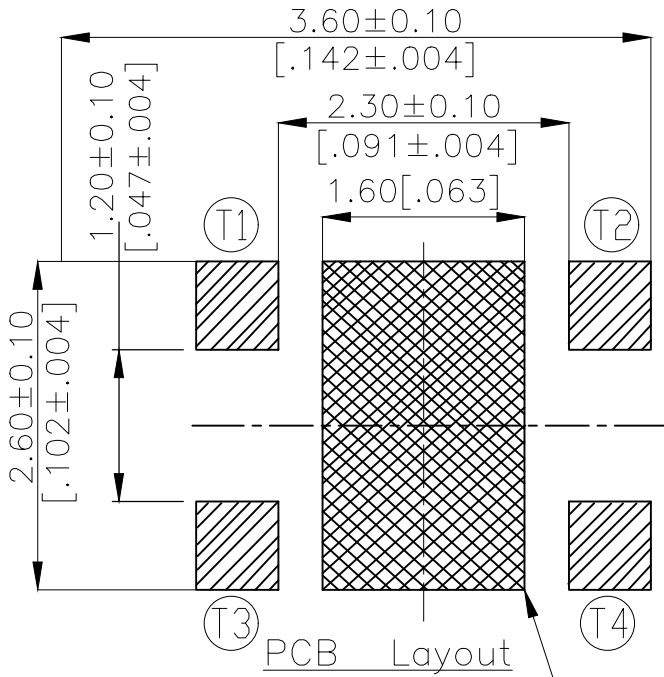



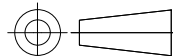
REVISIONS					
P	LTR	DESCRIPTION	DATE	DWN	APVD
	B	REVISED PER ECR-19-004770	10APR2019	SR	DD



CIRCUIT DIAGRAM



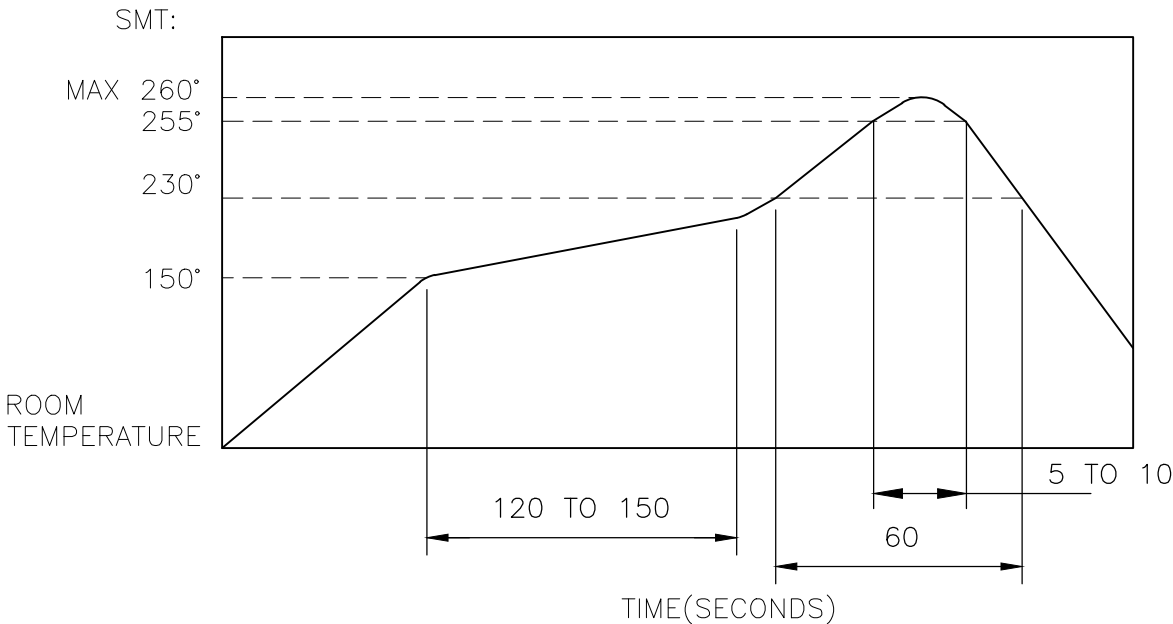
160±50	USLPT3026BL2TR	2337227-2
100±50	USLPT3026BL1TR	2337227-1
ACTUATION FORCE (gf)	SMART PART NUMBER	PART NUMBER

THIS DRAWING IS A CONTROLLED DOCUMENT.		DWN GANESH C M 04JUL2018		<div>TE Connectivity Ltd.</div>				
DIMENSIONS: mm [INCHES]		CHK ALEXANDER SHARPE 04JUL2018						
	TOLERANCES UNLESS OTHERWISE SPECIFIED: 0 PLC ± - 1 PLC ± - 2 PLC ± 0.2 [.008] 3 PLC ± - 4 PLC ± - ANGLES ± -		APVD ALEXANDER SHARPE 04JUL2018		NAME SWITCH, TACTILE, LOW-PROFILE, ULTRA-MINI, 3.0 x 2.6 x 0.45, J BEND -			
			PRODUCT SPEC -					
			APPLICATION SPEC -					
			WEIGHT					
MATERIAL -	FINISH -		SIZE A3		CAGE CODE 00779	DRAWING NO C-2337227	RESTRICTED TO -	
CUSTOMER DRAWING						SCALE NTS	SHEET 1 of 3	REV B

NOTES:

1. MATERIALS:
TERMINAL: COPPER ALLOY, SILVER FINISH
BASE: THERMOPLASTIC, UL 94V-0, BLACK
TAPE: POLYIMIDE
CONTACT: STAINLESS STEEL, SILVER FINISH
2. COMPLIANCE:
ALL MATERIALS AND FINISHES SHALL COMPLY WITH
EU DIRECTIVE 2002/95/EC OF 27JAN2003(RoHS)
3. SPECIFICATIONS:
RATING: 50 mA, 12V DC
CONTACT RESISTANCE: 500mΩ MAXIMUM (INITIAL)
INSULATION RESISTANCE: 50MΩ MINIMUM (INITIAL)
DIELECTRIC STRENGTH: 250V AC, 1 MINUTE
OPERATING LIFE: 100,000 CYCLES WITH LOAD
TRAVEL: 0.15±0.1[.006±.004]
ACTUATION FORCE: 2337227-1 = 100±50gf
2337227-2 = 160±50gf
OPERATING TEMPERATURE: -40° TO 85°C
STORAGE TEMPERATURE: -20° TO 60°C (WITHIN TAPE PACKAGE)

4. SOLDER CONDITIONS :



THE CONDITION NOTED ABOVE IS THE TEMPERATURE OF THE COPPER FOIL ON THE SURFACE OF THE PCB. THERE ARE CASES WHERE THE TEMPERATURE OF THE BOARD GREATLY DIFFERS FROM THE SURFACE OF THE SWITCH. DO NOT ALLOW THE SURFACE TEMPERATURE OF THE SWITCH TO EXCEED 260°C.

REVISIONS

P	LTR	DESCRIPTION	DATE	DWN	APVD
	—	SEE SHEET 1	—	—	—

MANUAL SOLDERING:

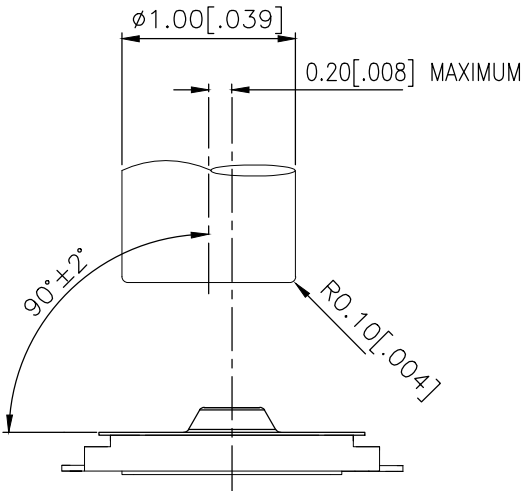
SOLDERING TEMPERATURE	350°C MAXIMUM
CONTINUOUS SOLDERING TIME	5 SECONDS MAXIMUM

HANDLING PRECAUTIONS:

1. CARE SHOULD BE EXERCISED SO THAT FLUX FROM THE TOP SURFACE OF THE PRINTED CIRCUIT BOARD DOES NOT ADHERE TO THE SWITCH.
2. DO NOT WASH THE SWITCH.

5. OPERATING PRECAUTIONS:

1. DO NOT ACTUATE THE SWITCH WITH EXCESSIVE FORCE
2. DISCONTINUE FORCE AFTER THE SWITCH HAS BEEN ACTUATED SO AS TO AVOID DEFORMATION OF THE COMPONENTS OF THE SWITCH. DEFORMATION OF THE COMPONENTS MAY CAUSE THE SWITCH TO MALFUNCTION.
3. ALIGN THE PLUNGER WITH THE SWITCH TO INSURE PROPER OPERATION



RECOMMENDED OPERATING CONDITIONS

THIS DRAWING IS A CONTROLLED DOCUMENT.		DWN GANESH C M 04JUL2018	TE Connectivity Ltd.			
		CHK ALEXANDER SHARPE 04JUL2018				
DIMENSIONS: mm [INCHES]	TOLERANCES UNLESS OTHERWISE SPECIFIED:	APVD ALEXANDER SHARPE 04JUL2018	NAME SWITCH, TACTILE, LOW-PROFILE, ULTRA-MINI, 3.0 x 2.6 x 0.45, J BEND			
		PRODUCT SPEC	—			
	0 PLC ± — 1 PLC ± — 2 PLC ± 0.2 [.008] 3 PLC ± — 4 PLC ± — ANGLES ± —	APPLICATION SPEC	—			
		—	SIZE A3	CAGE CODE 00779	DRAWING NO C-2337227	RESTRICTED TO —
MATERIAL —	FINISH —	WEIGHT	CUSTOMER DRAWING			
			SCALE NTS	SHEET 2 OF 3	REV B	

Mouser Electronics

Authorized Distributor

Click to View Pricing, Inventory, Delivery & Lifecycle Information:

[TE Connectivity:](#)

[USLPT3026BL1TR](#)