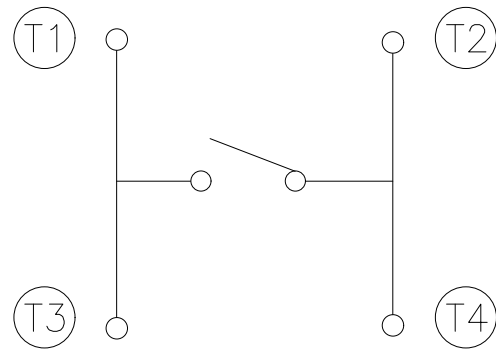
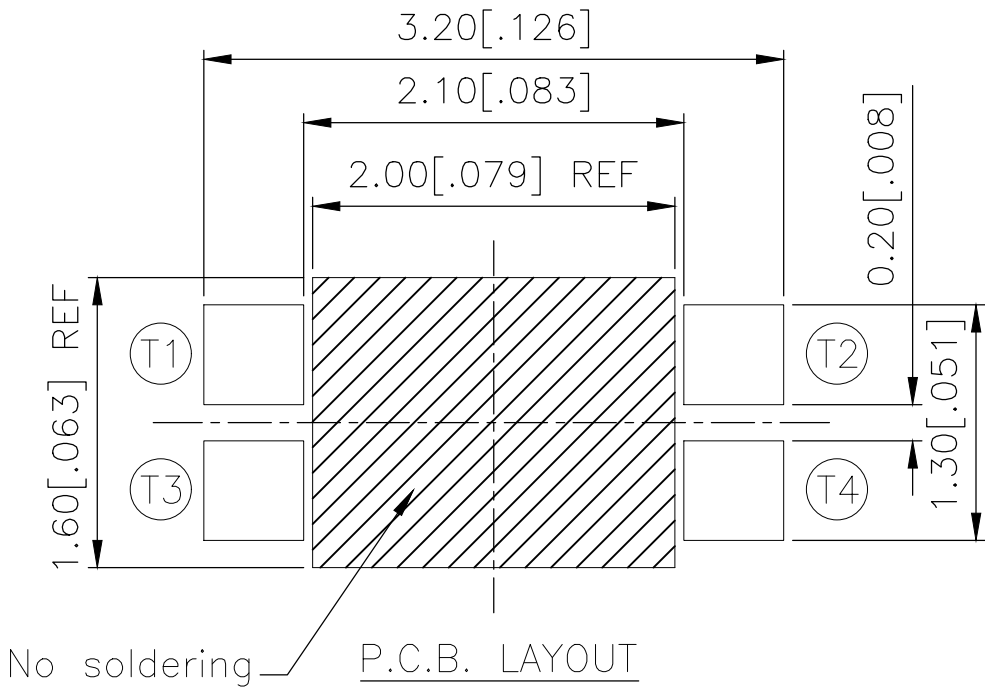
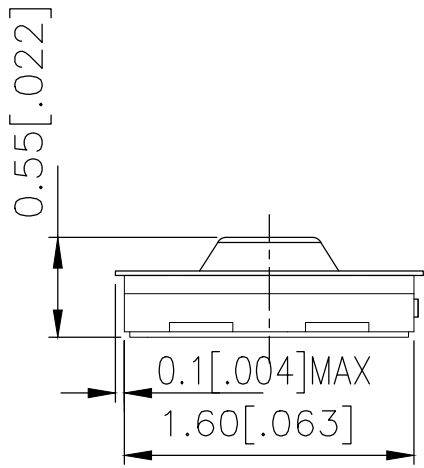
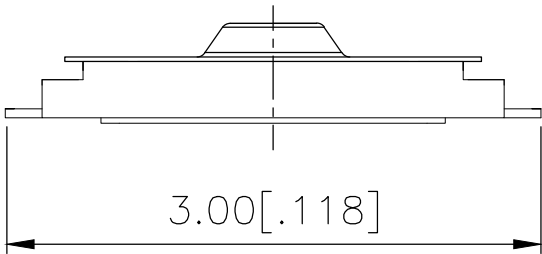
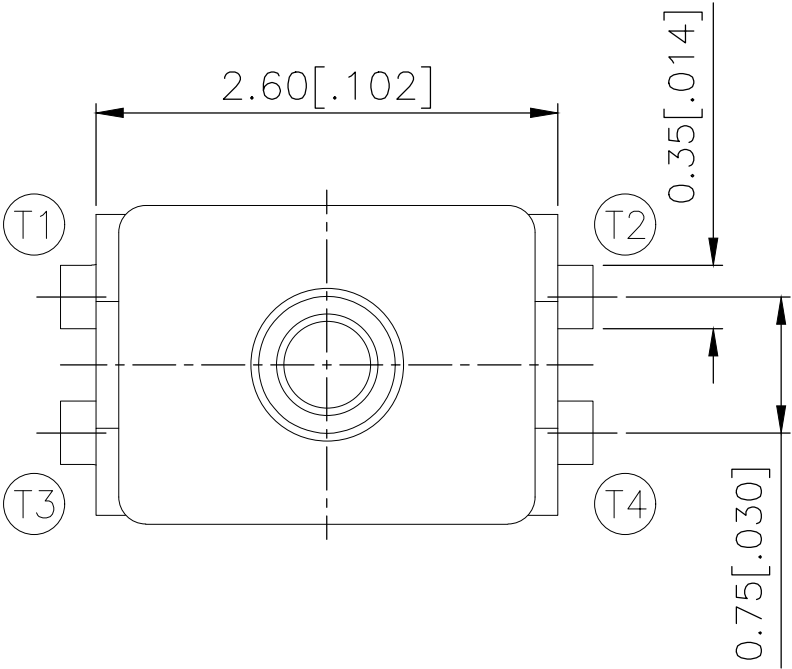



REVISIONS					
P	LTR	DESCRIPTION	DATE	DWN	APVD
	B	REVISED PER ECR-19-004770	10APR2019	SR	DD



CIRCUIT DIAGRAM

160±50	USLPT2616CT2TR	2337224-1
ACTUATION FORCE (gf)	SMART PART NUMBER	PART NUMBER

THIS DRAWING IS A CONTROLLED DOCUMENT.		DWN GANESH C M 04JUL2018	 TE Connectivity Ltd.		
		CHK ALEXANDER SHARPE 04JUL2018			
		APVD ALEXANDER SHARPE 04JUL2018	NAME SWITCH, TACTILE, LOW-PROFILE, ULTRA-MINI, 2.6 x 1.6 x 0.55, TAB		
		PRODUCT SPEC			
		APPLICATION SPEC			
		WEIGHT	SIZE A3	CAGE CODE 00779	RESTRICTED TO —
		CUSTOMER DRAWING	DRAWING NO C-2337224		REV B
			SCALE —	SHEET 1 of 3	

THIS DRAWING IS UNPUBLISHED.

RELEASED FOR PUBLICATION

-,-

© COPYRIGHT — TE Connectivity Ltd.

ALL RIGHTS RESERVED.

REVISIONS

P	LTR	DESCRIPTION	DATE	DWN	APVD
	—	SEE SHEET 1	—	—	—

NOTES:

1. MATERIALS:

TERMINAL: COPPER ALLOY, SILVER FINISH

BASE: THERMOPLASTIC, BLACK

TAPE: POLYAMIDE

ACTUATOR: POLYIMIDE

CONTACT: STAINLESS STEEL, SILVER FINISH

2. COMPLIANCE:

ALL MATERIALS AND FINISHES SHALL COMPLY WITH

EU DIRECTIVE 2002/95/EC OF 27JAN2003(RoHS)

3. SPECIFICATIONS:

RATING: 10 μ A, 2V DC MINIMUM TO 20 mA, 15V DC MAXIMUMCONTACT RESISTANCE: 500m Ω MAXIMUM (INITIAL)INSULATION RESISTANCE: 50M Ω MINIMUM (INITIAL)

DIELECTRIC STRENGTH: 250 V AC, 1 MINUTE

OPERATING LIFE: 200,000 CYCLES WITH LOAD

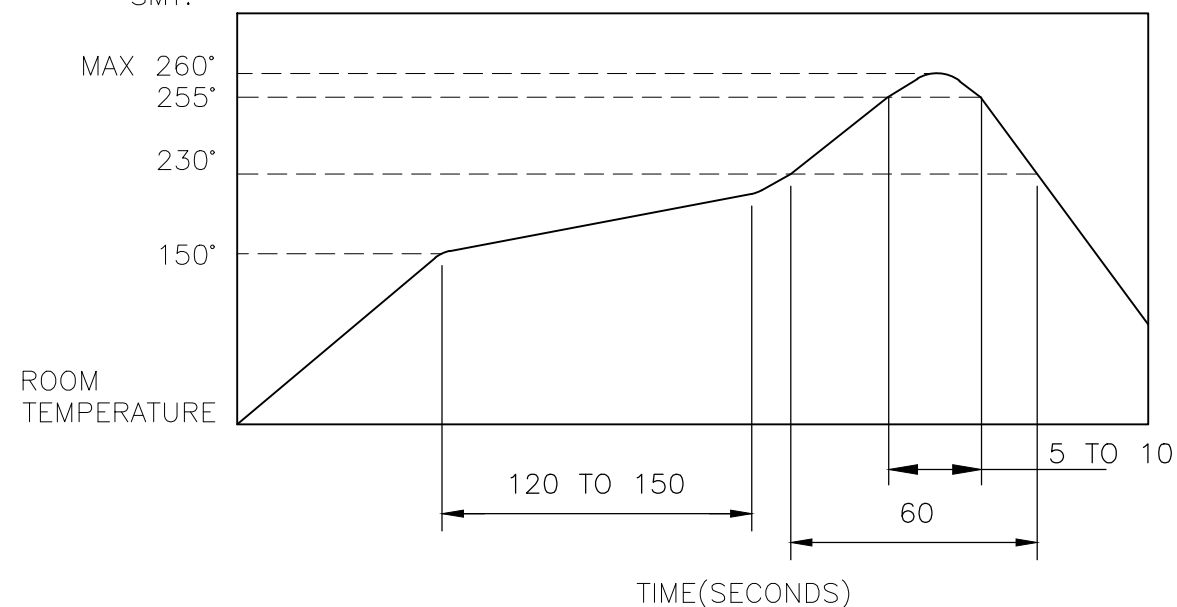
TRAVEL: 0.11 \pm 0.05 [.004 \pm .002]ACTUATION FORCE: 160 \pm 50gf

OPERATING TEMPERATURE: -40° TO 85°C

STORAGE TEMPERATURE: -40° TO 85°C

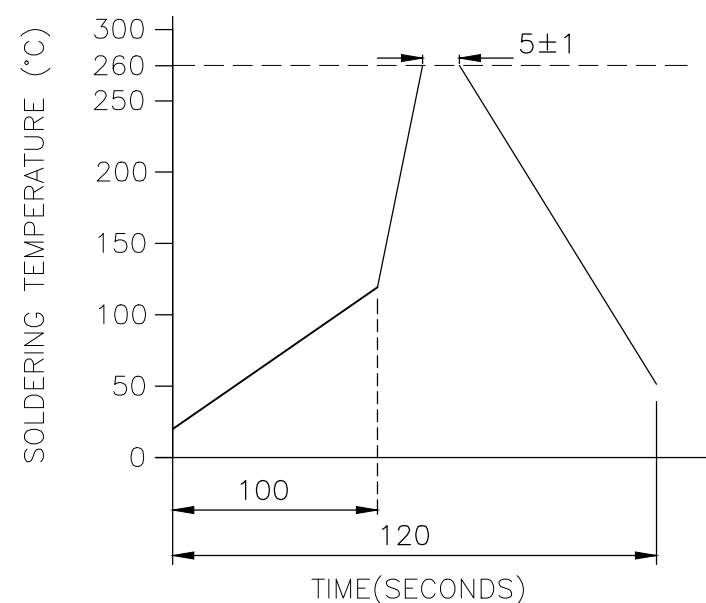
4. SOLDER CONDITIONS:

SMT:



THE CONDITON NOTED ABOVE IS THE TEMPERATURE OF THE COPPER FOIL ON THE SURFACE OF THE PCB. THERE ARE CASES WHERE THE TEMPERATURE OF THE BOARD GREATLY DIFFERS FROM THE SURFACE OF THE SWITCH. DO NOT ALLOW THE SURFACE TEMPERATURE OF THE SWITCH TO EXCEED 260°C.

WAVE SOLDER:



MANUAL SOLDERING:

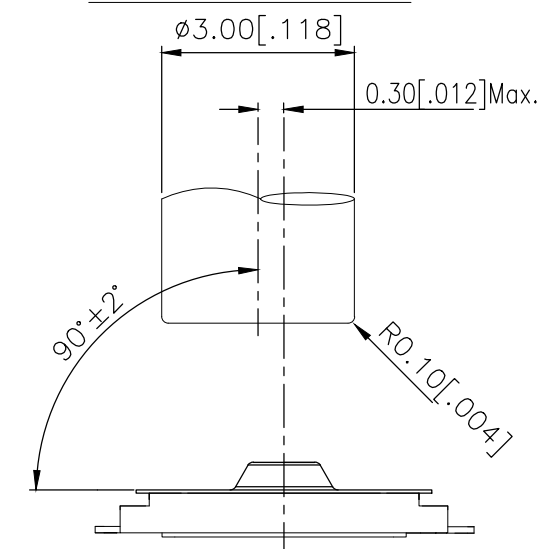
SOLDERING TEMPERATURE	350°C MAXIMUM
CONTINUOUS SOLDERING TIME	3 SECONDS MAXIMUM

HANDLING PRECAUTIONS:

1. CARE SHOULD BE EXERCISED SO THAT FLUX FROM THE TOP SURFACE OF THE PRINTED CIRCUIT BOARD DOES NOT ADHERE TO THE SWITCH.
2. DO NOT WASH THE SWITCH.

5. OPERATING PRECAUTIONS:

1. DO NOT ACTUATE THE SWITCH WITH EXCESSIVE FORCE
2. DISCONTINUE FORCE AFTER THE SWITCH HAS BEEN ACTUATED SO AS TO AVOID DEFORMATION OF THE COMPONENTS OF THE SWITCH. DEFORMATION OF THE COMPONENTS MAY CAUSE THE SWITCH TO MALFUNCTION.
3. ALIGN THE PLUNGER WITH THE SWITCH TO INSURE PROPER OPERATION

OPERATING PRECAUTIONSRECOMMENDED OPERATING CONDITIONS

THIS DRAWING IS A CONTROLLED DOCUMENT.		DWN GANESH C M 04JUL2018	TE Connectivity Ltd.			
		CHK ALEXANDER SHARPE 04JUL2018				
DIMENSIONS: mm		APVD ALEXANDER SHARPE 04JUL2018	NAME SWITCH, TACTILE, LOW-PROFILE, ULTRA-MINI, 2.6 x 1.6 x 0.55, TAB			
		PRODUCT SPEC	—			
		APPLICATION SPEC	—			
MATERIAL		WEIGHT	SIZE A3	CAGE CODE 00779	DRAWING NO C-2337224	RESTRICTED TO —
FINISH		CUSTOMER DRAWING	SCALE —	SHEET 2 OF 3	REV B	

THIS DRAWING IS UNPUBLISHED.

RELEASED FOR PUBLICATION

-,-

© COPYRIGHT — TE Connectivity Ltd.

ALL RIGHTS RESERVED.

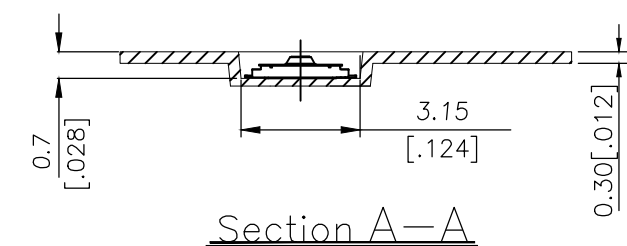
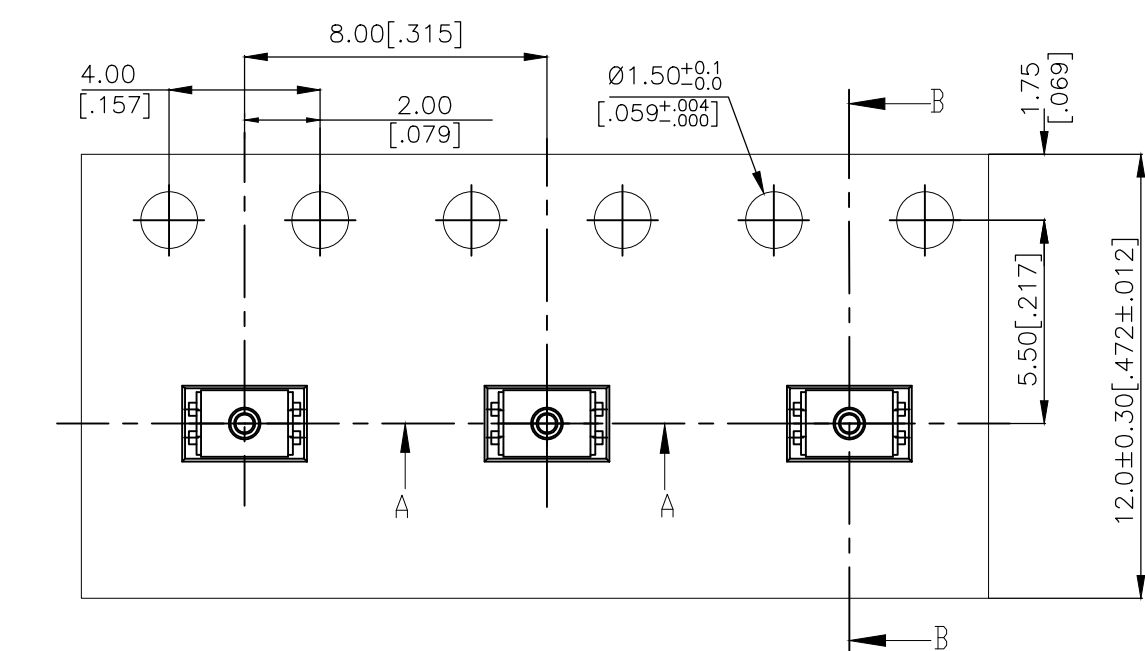
REVISIONS

P	LTR	DESCRIPTION	DATE	DWN	APVD
	—	SEE SHEET 1	—	—	—

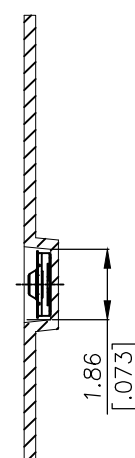
6. PACKAGING:

1. THE TAPE AND REEL ARE SHOWN FOR CUSTOMER APPLICATION REFERENCE. PACKAGING NOTES 3 AND 4 ARE REQUIRED BUT NOT ILLUSTRATED.
2. 2,500 SWITCHES PER REEL.
3. THE REEL, DESICCANT POUCH AND HUMIDITY CARD ARE SEALED IN A MOISTURE BARRIER BAG PER THE CURRENT REVISION OF IPC/JEDEC J-STD-033, MSL 2A REQUIREMENTS.
4. THE MOISTURE BARRIER BAG IS LABELED PER THE CURRENT REVISION OF IPC/JEDEC J-STD-033, MSL 2A REQUIREMENTS.

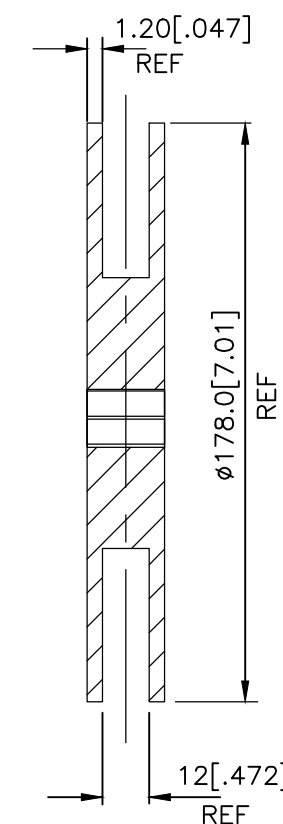
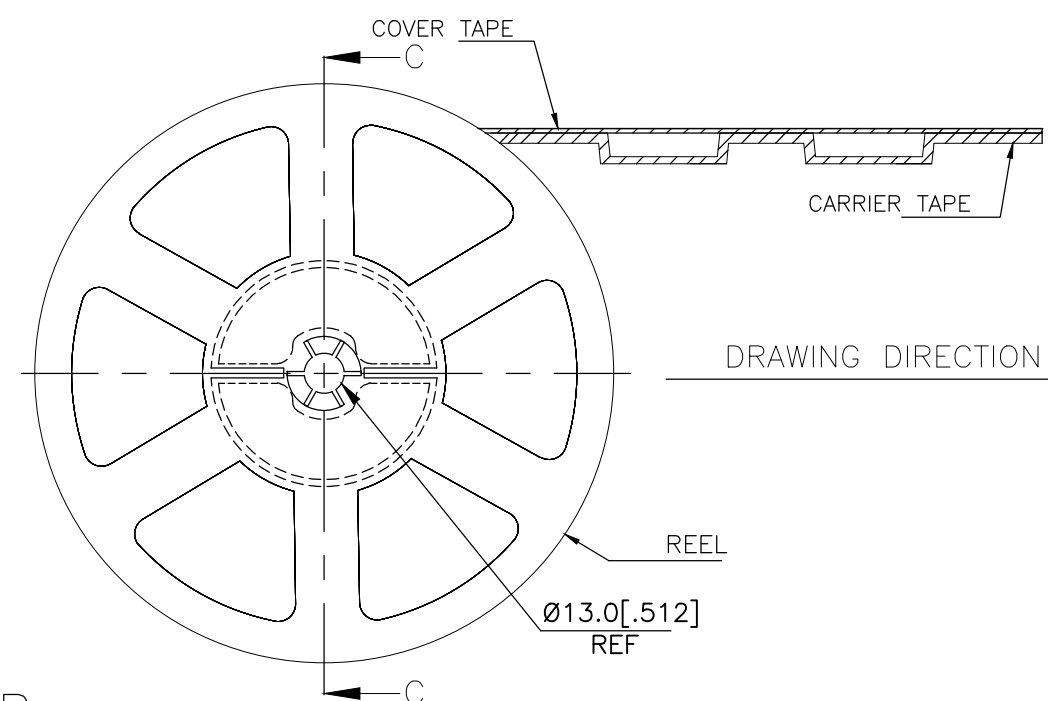
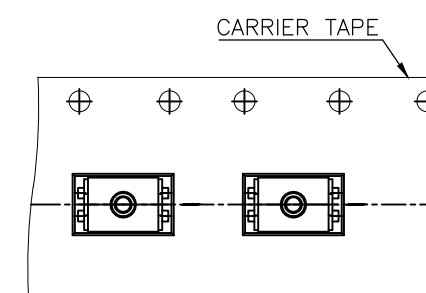
THE DIMENSIONS OF CARRIER TAPE AND REEL



Section B—B



ORIENTATION OF PILOT HOLES



Section C—C

THIS DRAWING IS A CONTROLLED DOCUMENT.

DWN GANESH C M 04JUL2018

CHK ALEXANDER SHARPE 04JUL2018

APVD ALEXANDER SHARPE 04JUL2018

PRODUCT SPEC

APPLICATION SPEC

WEIGHT

CUSTOMER DRAWING



TE Connectivity Ltd.

NAME
SWITCH, TACTILE, LOW-PROFILE, ULTRA-MINI,
2.6 x 1.6 x 0.55, TAB

SIZE CAGE CODE DRAWING NO RESTRICTED TO

A3 00779 C-2337224

SCALE

SHEET

3 OF 3

REV

B

Mouser Electronics

Authorized Distributor

Click to View Pricing, Inventory, Delivery & Lifecycle Information:

[TE Connectivity:](#)

[USLPT2616CT2TR](#)