

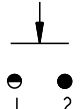
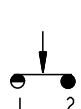
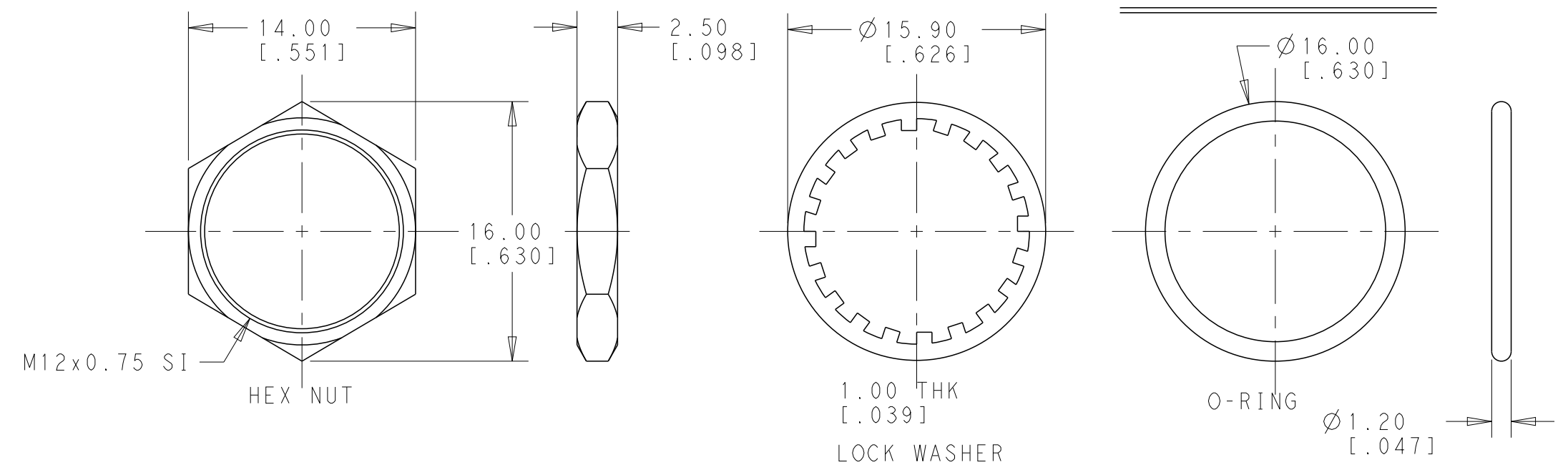


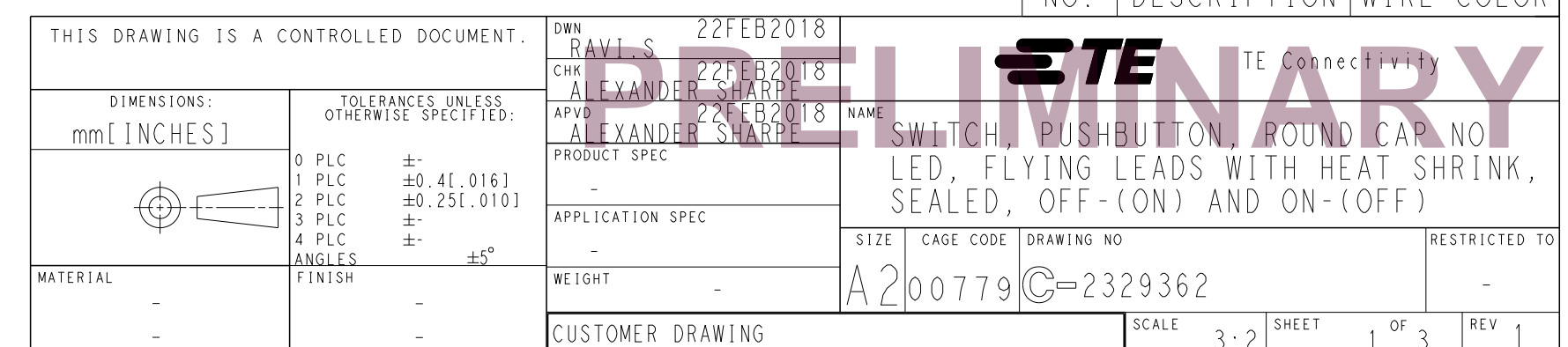
Model No.	POS. I	POS. 2
		
PB6	OFF	MOM (ON)
CONNECTED TERMINALS	OPEN	CLOSE
SCHEMATIC		

SWITCH FUNCTION



CAP: POLYAMIDE 6/6
 PLUNGER: POLYAMIDE 6/6 OR POLYCARBONATE
 RUBBER: SILICONE
 BUSHING: POLYAMIDE 6/6
 CASE: DIALLYL PHTHALATE (DAP) (UL94 V-0)
 TERMINALS/CONTACTS: COPPER ALLOY, GOLD OVER
 SILVER PLATED
 HEX NUT: BRASS, NICKEL PLATED (1)
 LOCK WASHER: BRASS, NICKEL PLATED (1)
 O-RING: SILICONE (1)
 WIRE: UL 3385, 20 AWG, SECTION 0.6mm²
 SPRING: STEEL
 HEAT SHRINK TUBE: POLYOLEFIN

1. HARDWARE IS SHIPPED UNASSEMBLED.



REVISIONS					
P	LTR	DESCRIPTION	DATE	DWN	APVD
	-	SEE SHEET 1	-	-	-

D

C

B

A

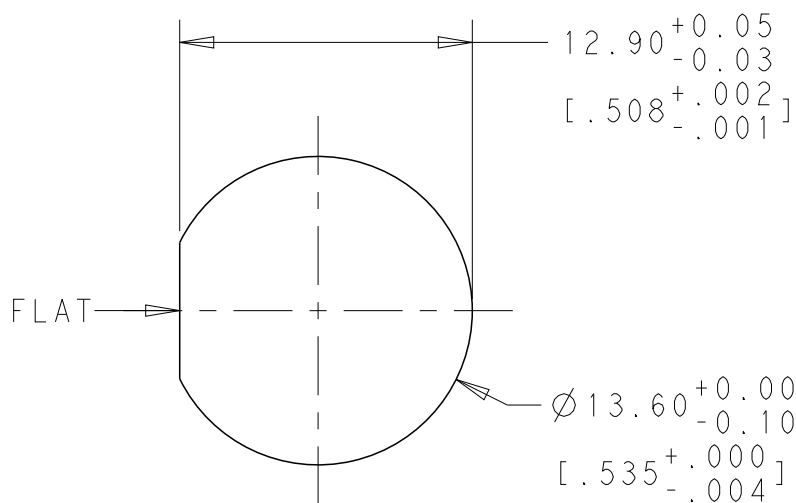
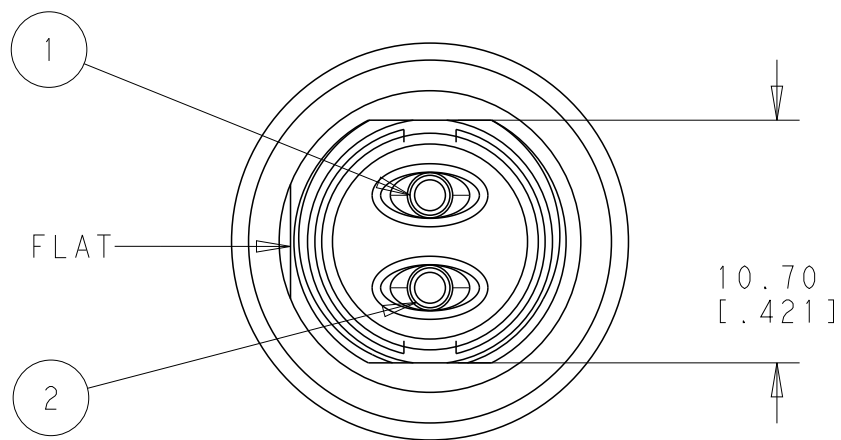
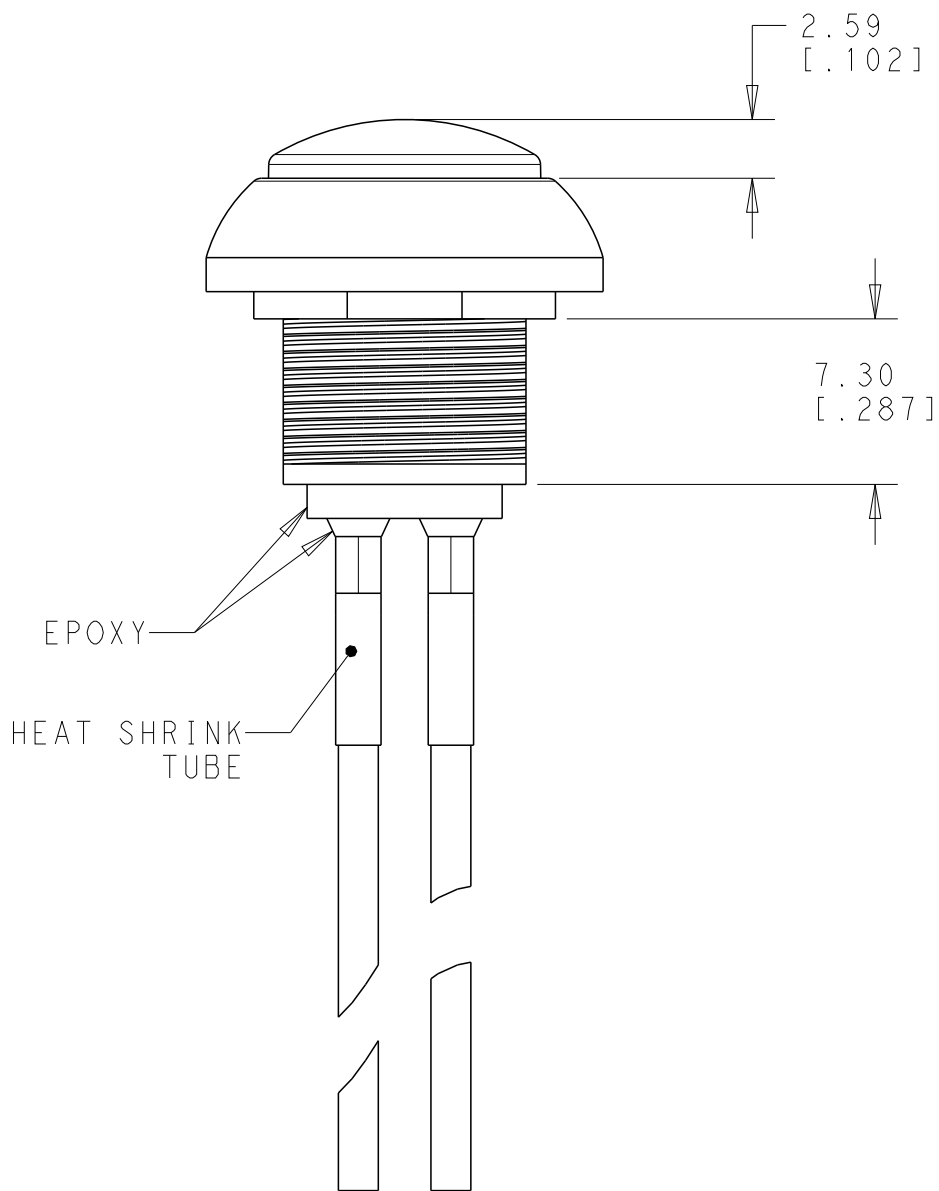
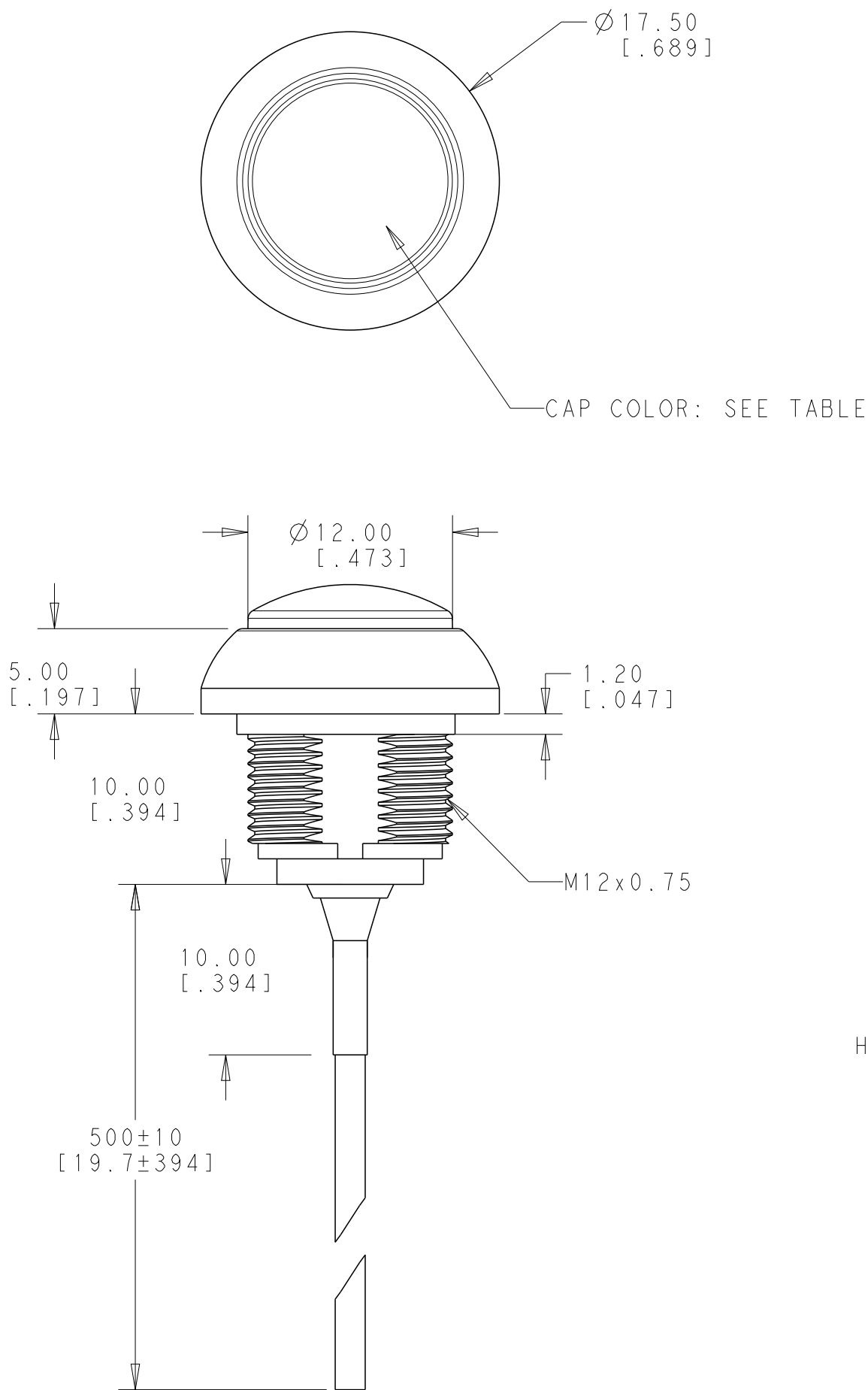
D

C

B

A

FLYING LEADS
ON-(OFF)



PANEL CUT-OUT
THICKNESS: 1.5mm~4.0mm
[.059~.157]

Model No.	POS. 1	POS. 2
PB7	ON	MOM(OFF)
CONNECTED TERMINALS	CLOSE	OPEN
SCHEMATIC		

SWITCH FUNCTION



2	TERMINAL 2	BLACK
1	TERMINAL 1	BLACK
NO.	DESCRIPTION	WIRE COLOR

THIS DRAWING IS A CONTROLLED DOCUMENT.		DWN RAVL.S 22FEB2018	TE Connectivity			
DIMENSIONS: mm[INCHES]		CHK ALEXANDER SHARPE 22FEB2018				
		APVD ALEXANDER SHARPE 22FEB2018	NAME SWITCH, PUSHBUTTON, ROUND CAP NO LED, FLYING LEADS WITH HEAT SHRINK, SEALED, OFF-(ON) AND ON-(OFF)			
		PRODUCT SPEC -	SIZE A2		CAGE CODE 00779	
MATERIAL -		APPLICATION SPEC -	DRAWING NO C-2329362		RESTRICTED TO -	
FINISH -		WEIGHT -	SCALE 3:2		SHEET 2 OF 3	
		CUSTOMER DRAWING			REV 1	

THIS DRAWING IS UNPUBLISHED.		RELEASED FOR PUBLICATION						REVISIONS			
© COPYRIGHT copyright_d8Ye-		ALL RIGHTS RESERVED.									
P	LTR	DESCRIPTION				DATE	DWN	APVD			

P	LTR	DESCRIPTION	DATE	DWN	APVD
	-	SEE SHEET 1	-	-	-

SINGLE POLE	ON-(OFF) MOMENTARY	FLYING LEADS WITH HEAT SHRINK TUBE	ROUND, SHINY BLUE	N/A	PB7B2RS7M1CAL00Y500	1-2329362-0
			ROUND, SHINY GREEN	N/A	PB7B2RS6M1CAL00Y500	2329362-9
			ROUND, SHINY YELLOW	N/A	PB7B2RS5M1CAL00Y500	2329362-8
			ROUND, SHINY RED	N/A	PB7B2RS3M1CAL00Y500	2329362-7
	OFF-(ON) MOMENTARY		ROUND, SHINY BLACK	N/A	PB7B2RS2M1CAL00Y500	2329362-6
			ROUND, SHINY BLUE	N/A	PB6B2RS7M1CAL00Y500	2329362-5
			ROUND, SHINY GREEN	N/A	PB6B2RS6M1CAL00Y500	2329362-4
			ROUND, SHINY YELLOW	N/A	PB6B2RS5M1CAL00Y500	2329362-3
			ROUND, SHINY RED	N/A	PB6B2RS3M1CAL00Y500	2329362-2
			ROUND, SHINY BLACK	N/A	PB6B2RS2M1CAL00Y500	2329362-1
POLE	THROW	TERMINAL TYPE	CAP TYPE & COLOR	LED COLOR	TE DESCRIPTIVE PART NUMBER	PART NUMBER

THIS DRAWING IS A CONTROLLED DOCUMENT.		DWN RAVI.S 22FEB2018 CHK ALEXANDER SHARPE 22FEB2018 APVD ALEXANDER SHARPE 22FEB2018		 TE Connectivity	
DIMENSIONS: mm[INCHES]		TOLERANCES UNLESS OTHERWISE SPECIFIED:		NAME SWITCH, PUSHBUTTON, ROUND CAP NO LED, FLYING LEADS WITH HEAT SHRINK, SEALED, OFF-(ON) AND ON-(OFF)	
		0 PLC ±- 1 PLC ±0.4[.016] 2 PLC ±0.25[.010] 3 PLC ±- 4 PLC ±- ANGLES ±5°			
MATERIAL - -		FINISH - -		SIZE A2	CAGE CODE 00779
		WEIGHT -		DRAWING NO C-2329362	
CUSTOMER DRAWING				SCALE 3:2	SHEET 3 OF 3
				REV 1	RESTRICTED TO -

Mouser Electronics

Authorized Distributor

Click to View Pricing, Inventory, Delivery & Lifecycle Information:

TE Connectivity:

[PB6B2RS3M1CAL00Y500](#) [PB7B2RS3M1CAL00Y500](#) [PB6B2RS5M1CAL00Y500](#) [PB7B2RS6M1CAL00Y500](#)
[PB7B2RS2M1CAL00Y500](#) [PB6B2RS7M1CAL00Y500](#) [PB7B2RS7M1CAL00Y500](#) [PB6B2RS2M1CAL00Y500](#)
[PB6B2RS6M1CAL00Y500](#) [PB7B2RS5M1CAL00Y500](#)