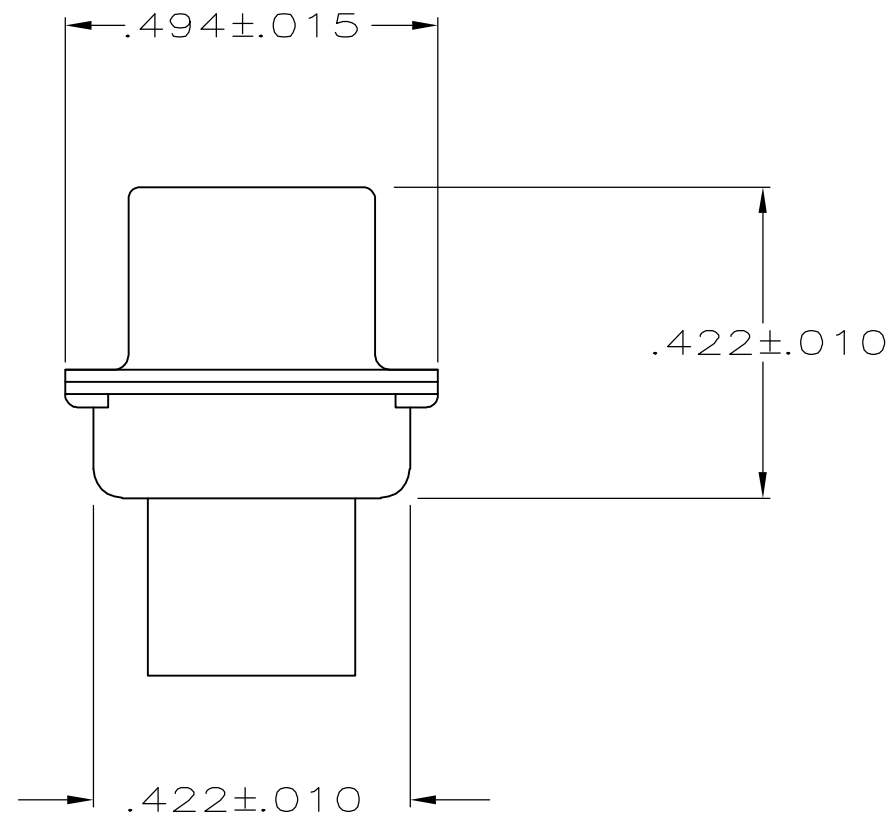
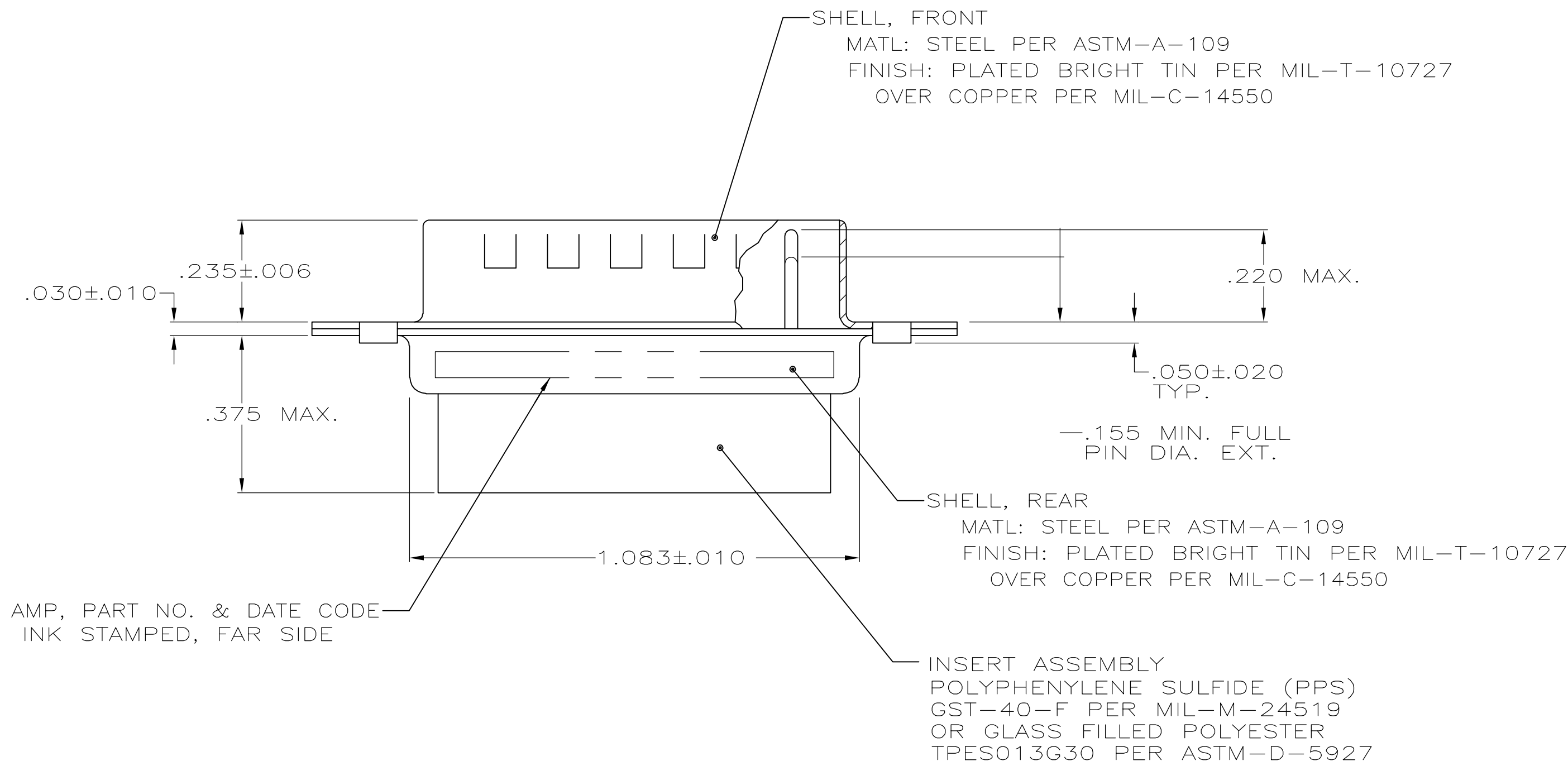
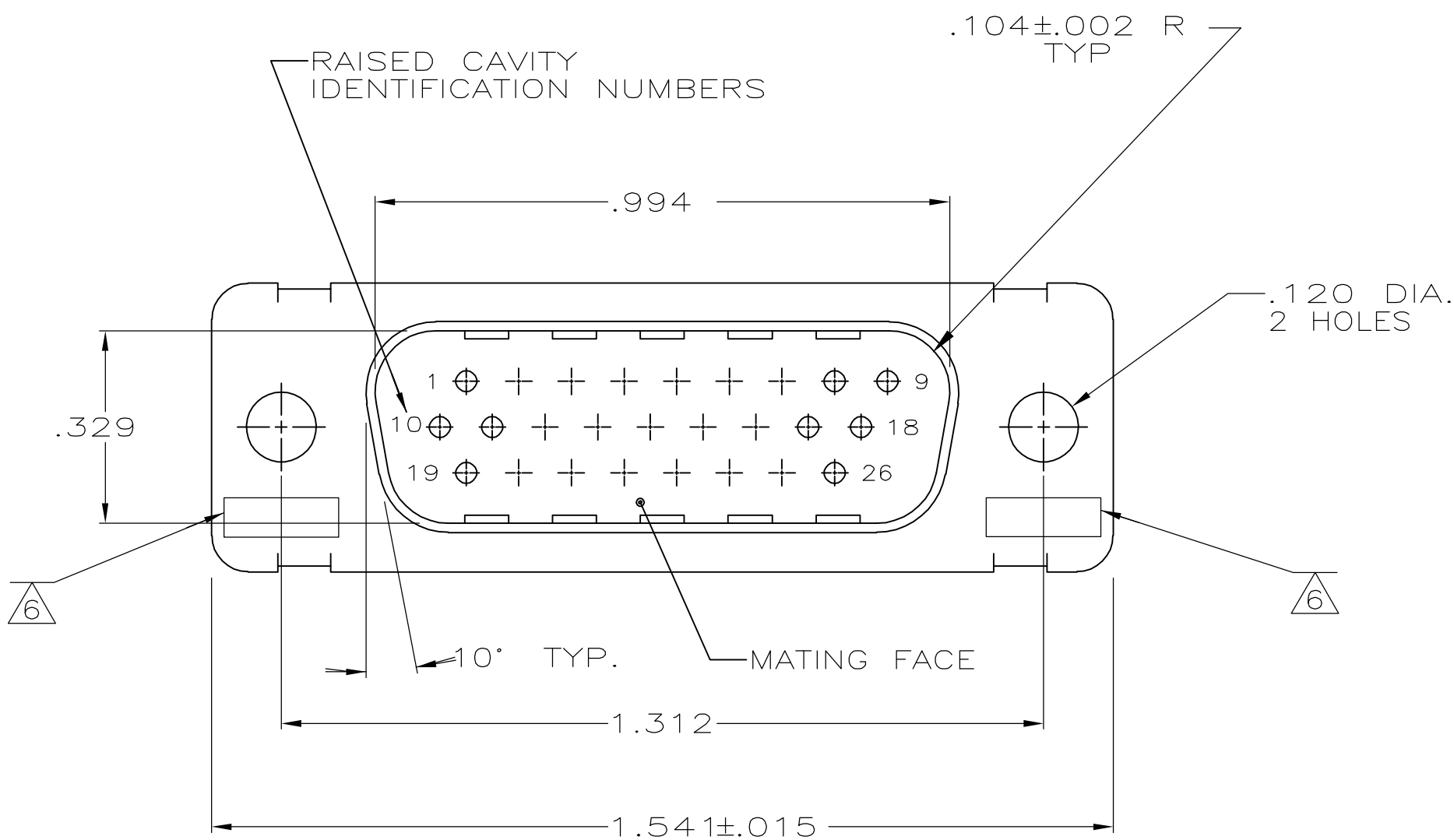



2				1				
LOC	DIST	REVISIONS						
—	—	P	LTR	DESCRIPTION		DATE	DWN	APVD
			C	REV PER ECO-06-013796		22JUN06	PY	ND



1. THIS PLUG WILL MATE WITH ANY 26 POSN., SIZE 2 RECEPTACLE IN AMPLIMITE SERIES.
 2. THIS CONNECTOR ACCEPTS SIZE 22 PIN CONTACTS.
 3. CONNECTOR SUPPLIED WITHOUT CONTACTS; SHOWN FOR ILLUSTRATION ONLY.
 4. STAINLESS STEEL RETENTION CLIPS(26) ARE INCLUDED IN INSERT ASSEMBLY.
 5. MAXIMUM WIRE INSULATION TO BE USED WITH THIS PLUG IS .054 DIA.
- △ UL/CSA DESIGNATION STAMPED IN THIS AREA.

213310-1
PART NO.

THIS DRAWING IS A CONTROLLED DOCUMENT.		DWN D. ERDMAN 7-6-86	tyco <i>Electronics</i>		Tyco Electronics Corporation Harrisburg, PA 17105-3608				
DIMENSIONS: INCHES		CHK F. BALLEW 7-6-86	NAME L. LAWVER 7-6-86		PLUG ASSEMBLY, AMPLITUDE 26 POSN, SIZE 2, SERIES 90 WITH GROUNDING INDENTS				
		PRODUCT SPEC							
		APPLICATION SPEC							
TOLERANCES UNLESS OTHERWISE SPECIFIED:		APVD L. LAWVER 7-6-86		SIZE		CASE CODE	DRAWING NO	RESTRICTED TO	
0 PLC ± -		—		A1		00779	C=213310	—	
1 PLC ± -		—		—		—		—	
2 PLC ± -		—		—		—		—	
3 PLC ± -		—		—		—		—	
4 PLC ± -		—		—		—		—	
ANGLES ± -		—		—		—		—	
FINISH		—		—		—		—	
MATERIAL SEE CALLOUTS		SEE CALLOUTS		CUSTOMER DRAWING		SCALE 1:1		SHEET 1 OF 1	REV C

Mouser Electronics

Authorized Distributor

Click to View Pricing, Inventory, Delivery & Lifecycle Information:

[TE Connectivity:](#)

[213310-1](#)