


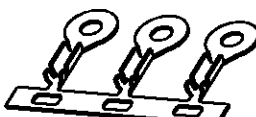


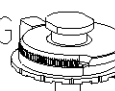


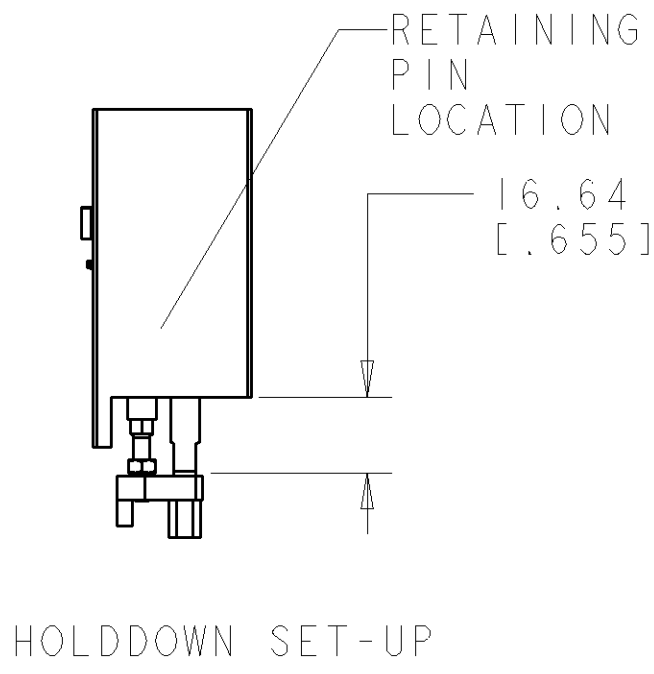
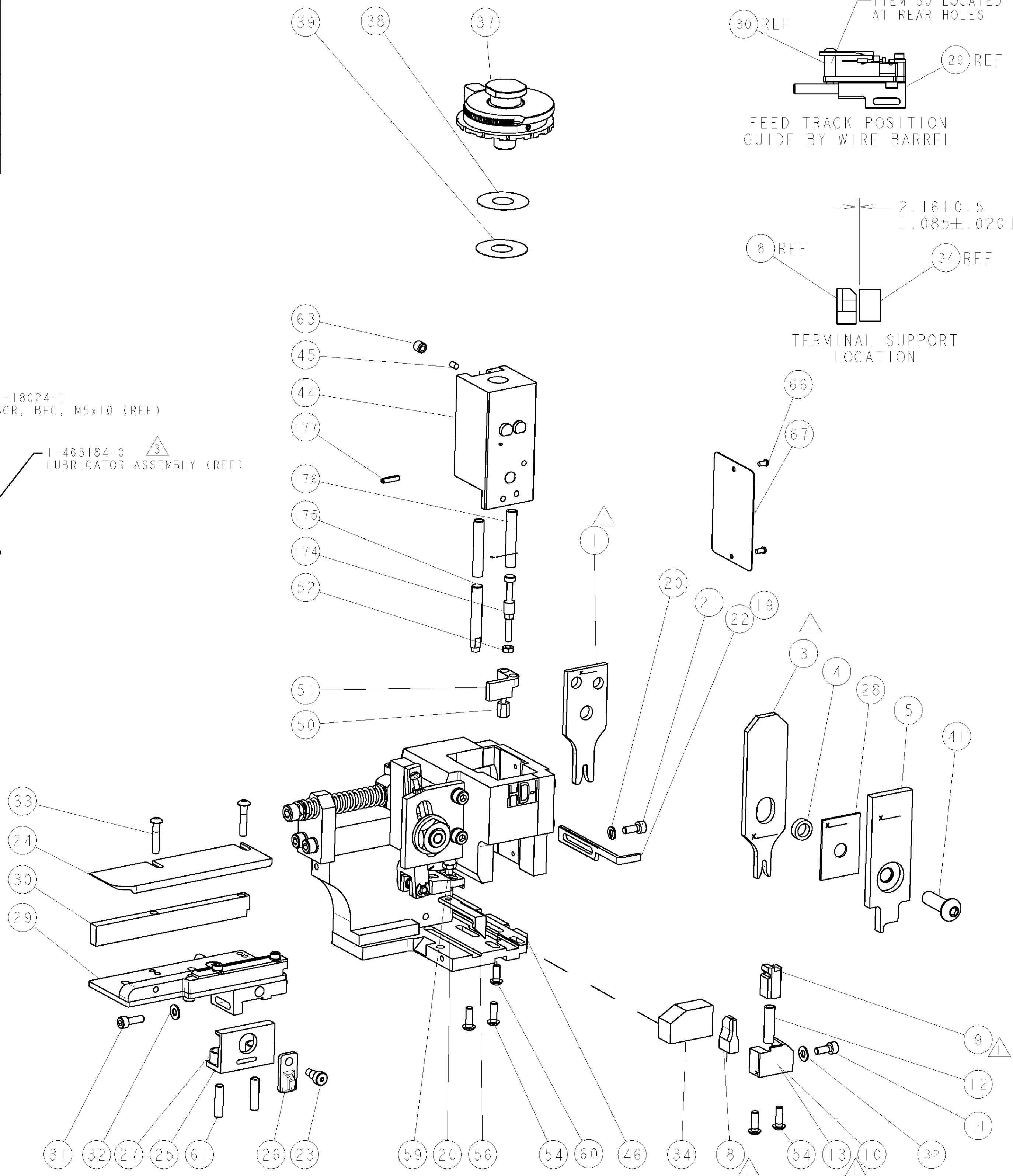
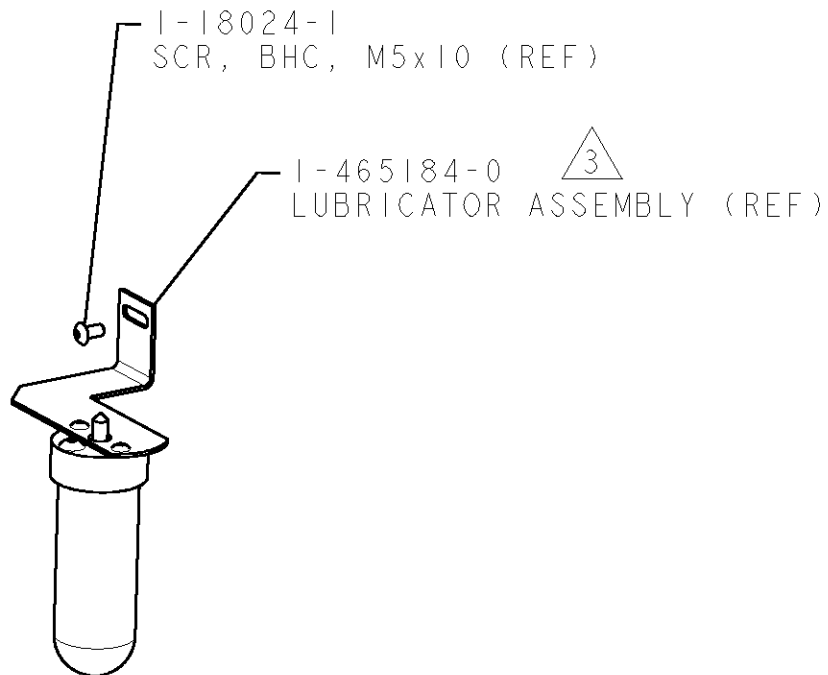
8			7		
THIS DRAWING IS UNPUBLISHED.			RELEASED FOR PUBLICATION		
20			20		
BY TYCO ELECTRONICS CORPORATION. ALL RIGHTS RESERVED.					
© COPYRIGHT 20					
PART NUMBER	REV	TERMINATOR	FEED TYPE	DESCRIPTION	
2115001-1	A	LEADMAKER	MECH POST FEED	CUTS CARRIER	
2115001-2	A	BENCH	MECH PRE FEED	CUTS CARRIER	
2115001-6	A	LEADMAKER	MECH POST FEED	CONTINUOUS CARRIER	
7-2115001-1	A	LEADMAKER	MECH POST FEED	-1 AND SPARE PARTS	
7-2115001-2	A	BENCH	MECH PRE FEED	-2 AND SPARE PARTS	
7-2115001-6	A	LEADMAKER	MECH POST FEED	-6 AND SPARE PARTS	
7-2115001-7	A	-	-	SPARE PARTS KIT	

CRIMP DATA		MOLEX TERMINAL		MOLEX CRIMP SPECS	
TERMINAL NAME: MAX150 1.5MM BLADE TERMINAL					
CRIMP	SIZE	TYPE	RANGE		
WIRE	2.46 [1.097 IN]	F	14 AWG or 2.0mm ²		
INSUL	2.54 [1.100 IN]	O	2.54-2.69 [1.100-1.106 IN]		
WIRE STRIP LENGTH 4.70-5.60 [1.185-.220 IN]			APPL INSTRUCTIONS 408-8322 & 408-8490 		
TERMINAL APPL SPEC		MOLEX-FINE ADJUST APPLICATOR FOR "MX150" BLADE-REVB 		FEED 9.65 [1.380 IN]	
TERMINALS APPLIED 					
TE PN		M.F.R.		-	-
2082121-1		33000-1001		-	-
-		-		-	-
-		-		-	-
-		-		-	-
-		-		-	-
WIRE SIZE 		CRIMP HEIGHT 		REF SETTING 	
14 AWG or 2.0mm ²		1.65 ±0.05 [1.065 ±.002 IN]		C3	
-		-		-	
-		-		-	
-		-		-	
-		-		-	
-		-		-	
-		-		-	
-		-		-	
-		-		-	
-		-		-	
-		-		-	
-		-		-	

- △ RECOMMENDED SPARE PARTS.
2. GREASE RAM, CAM, CAM FOLLOWER AND FEED ROD LIGHTLY.
- △ CERTAIN TERMINALS REQUIRE LUBRICATION. REFER TO THE APPLICATOR INSTRUCTION SHEET FOR MORE INFORMATION.
4. LUBRICATE DAILY PER THE APPLICATOR INSTRUCTION SHEET SUPPLIED WITH THE APPLICATOR.

* WARNING
ON INSTALLATION, SET WIRE DISC TO LARGEST WIRE SIZE SETTING. USE OF SETTINGS BELOW MIN. REQUIRED CRIMP HEIGHT SETTING WILL CAUSE DAMAGE TO CRIMP TOOLING.

VIEW B ROTATED 180°			
POST-FEED 40mm STROKE	POST-FEED 30mm STROKE	PRE-FEED 30mm STROKE	PRE-FEED 40mm STROKE



SET UP GAGE
458637-3

LOC	DIST	REVISIONS					
A	66	P	LTR	DESCRIPTION	DATE	DWN	APVD
			I	DEVELOPMENT	08APR2009	Y.Y	S.X
			A	RELEASED	21MAY2009	L.G	TE

-	1	1	1	1	1	1	993111-8	PIN, SLOTTED SPRING 3.0 X 12.0	177
-	2	2	2	2	2	2	3-22280-7	SPRING, COMPRESSION	176
-	1	1	1	1	1	1	1752353-1	GUIDE PIN,HOLDDOWN	175
-	1	1	1	1	1	1	1901680-1	GUIDE PIN,HOLDDOWN	174
-	1	1	1	1	1	1	1338705-3	DOCUMENTATION PACKAGE	71
-	1	1	1	1	1	1	461264-5	PLATE, IDENTIFICATION	67
-	2	2	2	2	2	2	21017-2	SCREW, DRIVE	66
-	1	1	1	1	1	1	3-18031-0	SCR, SET, CUP POINT M6 X 6.0	63
-	2	2	2	2	2	2	2-18032-5	SCR, SET, FLT POINT M5 X 20.0	61
-	1	1	1	1	1	1	18024-7	SCR, BTN SKT HD CAP (M4 X 10.0)	60
-	1	1	1	1	1	1	5-18022-2	SCR, HEX HD CAP M4 X 8.0	59
-	1	1	1	1	1	1	1338685-1	PAWL, FEED	56
-	4	4	4	4	4	4	18024-8	SCR, BTN SKT HD CAP (M4 X 12.0)	54
-	1	1	1	1	1	1	1-18030-0	NUT, HEX, REG M3.5	52
-	1	1	1	1	1	1	1901681-1	HOLDDOWN, TERMINAL	51
-	1	1	1	1	1	1	1-1752354-8	STANDOFF,HOLD-DOWN	50
-	1	1	1	1	1	1	18024-3	SCR, BTN SKT HD CAP (M3 X 10.0)	49
-	-	1	-	-	1	-	1338675-1	CAM, UNIVERSAL PRE FEED	48
-	1	-	1	1	-	1	1338676-1	CAM, UNIVERSAL POST-FEED	47
-	1	1	1	1	1	1	1320999-3	APPLICATOR SUBASSEMBLY, HDI	46
-	1	1	1	1	1	1	690191-1	PLUG,NYLON	45
-	1	1	1	1	1	1	1633724-1	RAM, (SIDE FEED)	44
-	1	1	1	1	1	1	2-18024-6	SCR, BTN SKT HD CAP (M8 X 25.0)	41
-	1	1	1	1	1	1	690125-1	SHIM SUB-ASSY	39
-	1	1	1	1	1	1	469367-2	SHIM	38
-	1	1	1	1	1	1	879103-2	FINE ADJUST HEAD ASSEMBLY	37
-	1	1	1	1	1	1	2-1752356-0	SUPPORT, TERMINAL	34
-	2	2	2	2	2	2	1-18024-0	SCR, BTN SKT HD CAP (M4 X 20.0)	33
-	2	2	2	2	2	2	18027-2	WASHER, FLAT, REG M4	32
-	1	1	1	1	1	1	1-18023-2	SCR, SKT HD CAP M4 X 12.0	31
-	1	1	1	1	1	1	1320908-1	SPACER, STRIP GUIDE	30
-	1	1	1	1	1	1	1633073-8	STRIP GUIDE ASSEMBLY	29
-	1	1	1	1	1	1	1-455888-0	SPACER, CRIMPER	28
-	2	2	2	2	2	2	1-22284-0	SPRING, COMPRESSION	27
-	1	1	1	1	1	1	356835-1	LEVER, DRAG RELEASE	26
-	1	1	1	1	1	1	240792-1	DRAG, TERMINAL	25
-	1	1	1	1	1	1	1320928-1	PLATE, STRIP GUIDE	24
-	1	1	1	1	1	1	980371-4	SCR, SKT HD SHLDR 5.0 DIA X 6.0	23
-	1	-	1	1	-	1	690472-2	STRIPPER	22
-	1	1	1	1	1	1	1-18023-1	SCR, SKT HD CAP M4 X 10.0	21
-	2	2	2	2	2	2	18025-2	WASHER, SPRG LOCK, REG M4	20
-	-	1	-	-	1	-	690472-1	STRIPPER	19
-	1	1	1	1	1	1	1338684-1	SHEAR HOLDER, FRONT	13
-	1	1	1	1	1	1	3-22280-3	SPRING, COMPRESSION	12
-	1	1	1	1	1	1	1-18023-1	SCR, SKT HD CAP M4 X 10.0	11
-	-	1	1	-	1	1	1320921-1	SHEAR HOLDER, FRONT, CUT	10
-	1	1	1	1	1	1	454276-1	FLOATING SHEAR, FRONT	9
1	2	2	2	1	1	1	1633711-8	ANVIL, COMBINATION	8
-	-	-	-	-	-	-	-	-	7
-	-	-	-	-	-	-	-	-	6
-	1	1	1	1	1	1	3-455889-6	DEPRESSOR, SHEAR	5
-	1	1	1	1	1	1	4-238011-5	BLOCK, CRIMPER SPACER	4
1	2	2	2	1	1	1	1-904741-2	CRIMPER, INSUL O PREMIUM	3
-	-	-	-	-	-	-	-	-	2
1	2	2	2	1	1	1	2-1633609-8	CRIMPER, WIRE	1

-77		-76	-72	-71	-6	-2	-1	PART NO	DESCRIPTION	ITEM NO
THIS IS A PRELIMINARY DRAWING. THE INFORMATION CONTAINED HEREIN IS SUBJECT TO CHANGE WITHOUT NOTICE. THE USER OF THIS DRAWING SHALL BE RESPONSIBLE FOR OBTAINING THE LATEST EDITION.								DWN Y.YIN 08APR2009	Tyco Electronics Tyco Electronics Harrisburg, PA 17105-3608	
DIMENSIONS: mm [IN]								CHK S.ZOU 08APR2009	NAME FINE ADJUST SIDE FEED HDI APPLICATOR	
TOLERANCES UNLESS OTHERWISE SPECIFIED: 3 PLC ± 1 PLC ± 2 PLC ± 4 PLC ± ANGLES ±								APVD S.XI 08APR2009	SIZE CAGE CODE DRAWING NO 00779 C=2115001	
MATERIAL -								FINISH -	RESTRICTED TO A	
CUSTOMER DRAWING								WEIGHT -	SCALE 3:5	
								SHEET 1	OF 1	
								REV A		

Mouser Electronics

Authorized Distributor

Click to View Pricing, Inventory, Delivery & Lifecycle Information:

[TE Connectivity:](#)

[2115001-6](#)