

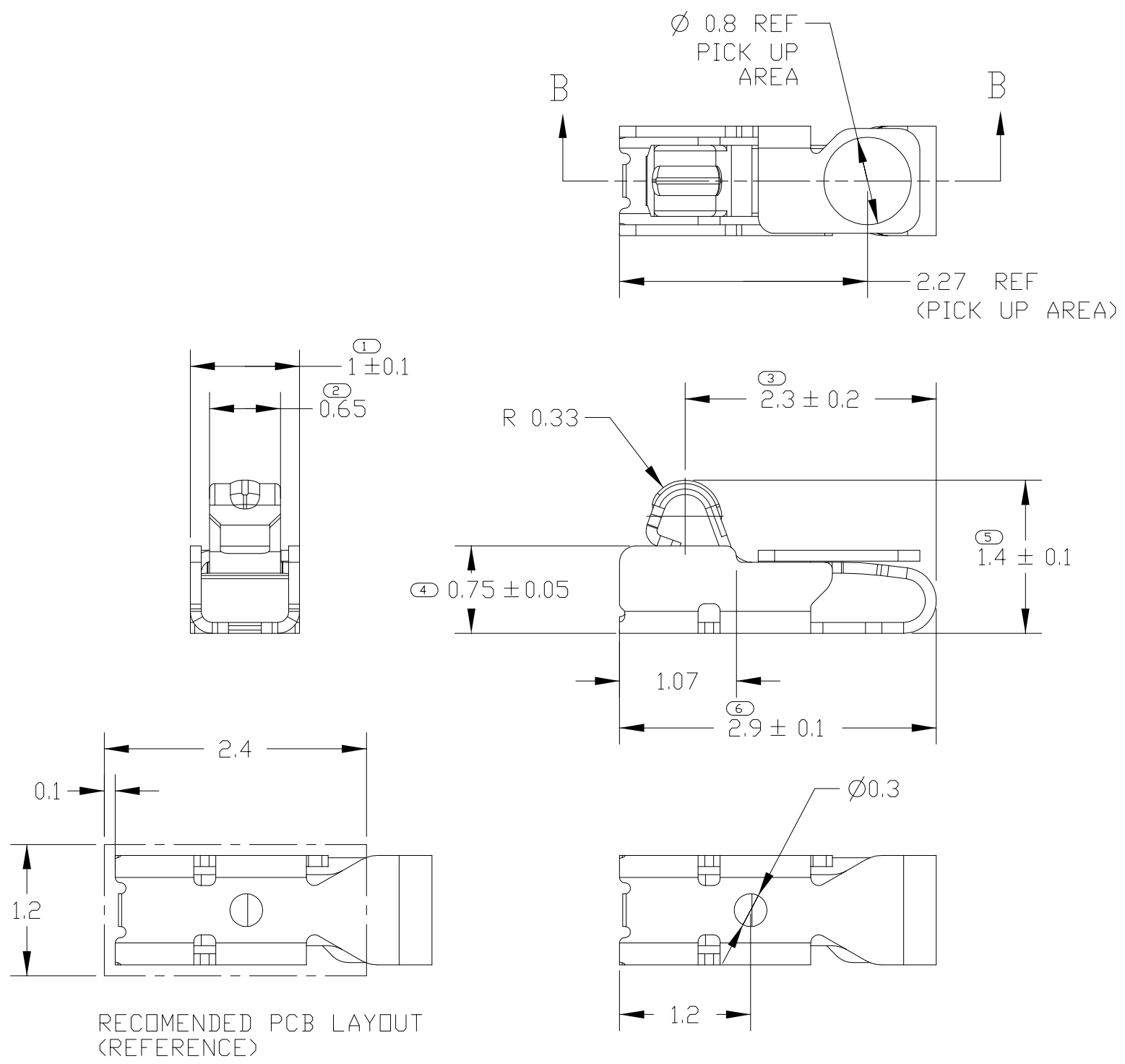
LOC	DIST	REVISIONS					
		P	LTR	DESCRIPTION	DATE	DWN	APVD
—	—		B	REVISED	05JUNE2013	IC.K	JH.K
			C	REVISED	10JUNE2013	IC.K	JH.K
			C1	REVISED	25FEB2014	IC.K	JH.K
			C2	REVISED	05FEB2015	IC.K	JH.K

D

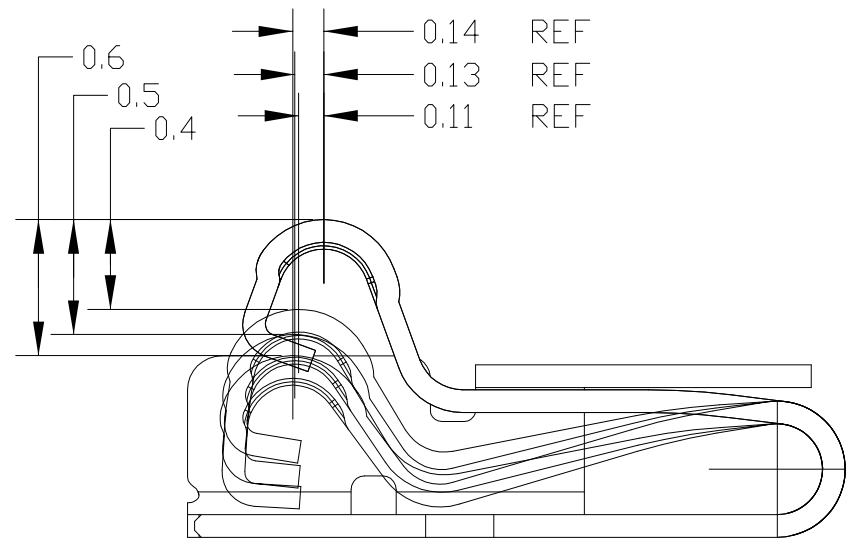
C

B

A



AS SHOWN
① 2108610-5/6
② 2-2108610-6



STROKE CONDITION (REFERENCE)
SECTION B-B

- ① MATERIAL: COPPER ALLOY, THK.=0.1mm
- ② FINISH: Ni UNDER PLATING ALL OVER 0.8~3.0um.
CONTACT PLATING: Au 0.1~0.4um
SOLDER PLATING: Au FLASH 0.05~0.35um
- ③ CUTTING BURR: 0.05mm MAX.
- ④ F/G SHOULD BE SEPARATED BASED ON THE CUSTOMER'S PART NUMBER AS BELOW TABLE

NO	PART NUMBER	CUSTOMER PART NUMBER	PRODUCT SPEC
1	2108610-5	MBV62562001	108-61185
2	2108610-6	EAG63652301	
② 3	2-2108610-6	-	108-61250

THIS DRAWING IS A CONTROLLED DOCUMENT.

DIMENSIONS:
mm

MATERIAL

①

TOLERANCES UNLESS OTHERWISE SPECIFIED:
±0.15

0-PLC ±

1-PLC ±0.5

2-PLC ±0.13

3-PLC ±0.013

4-PLC ±0.0001

ANGLES ±

FINISH

②

DWN JH GONG 08FEB2013

CHK JH KIM 08FEB2013

APVD JH KIM 08FEB2013

PRODUCT SPEC

SEE TABLE ④

APPLICATION SPEC

-

WEIGHT -

CUSTOMER DRAWING

TE Connectivity

NAME

SIZE CAGE CODE DRAWING NO RESTRICTED TO

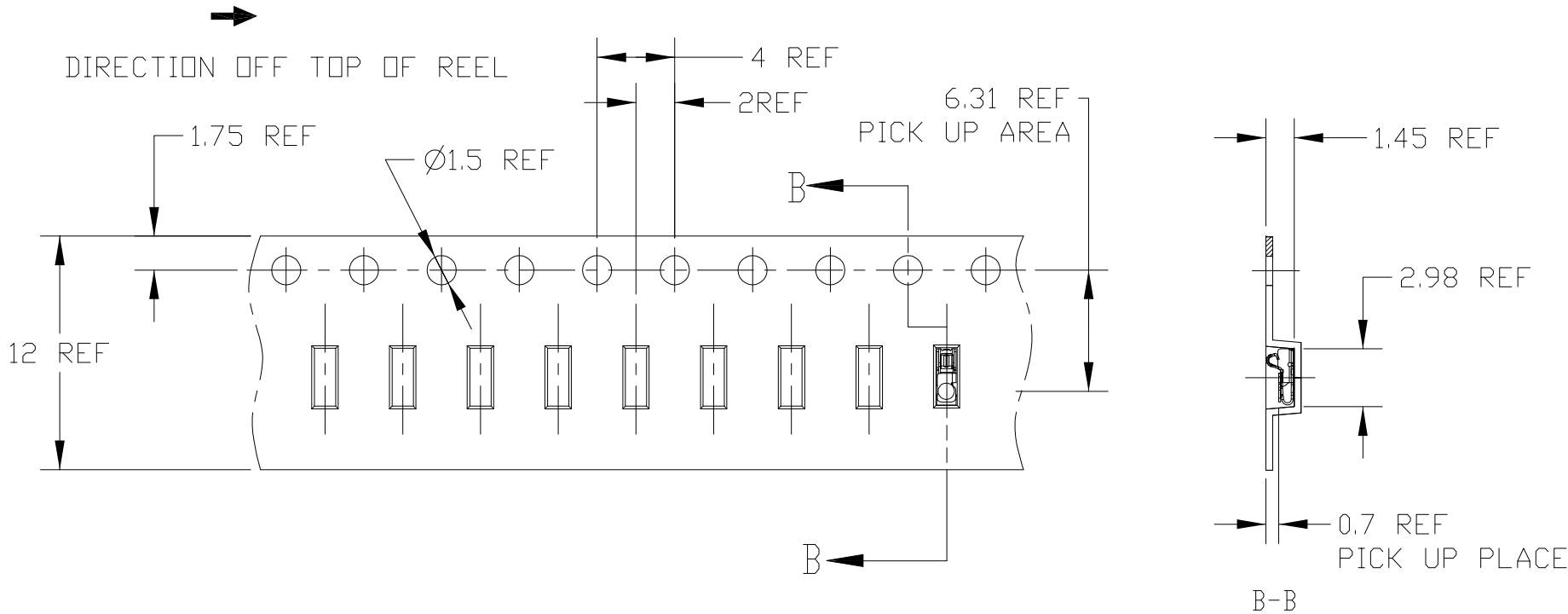
A300779 C=C_2108610 -

SCALE 20:1

SHEET 1 OF 3

REV C2

①④ <2108610-5 : MBV62562001>



①④

TE



MBV62562001-YYYYMMDD-*****-HK000120

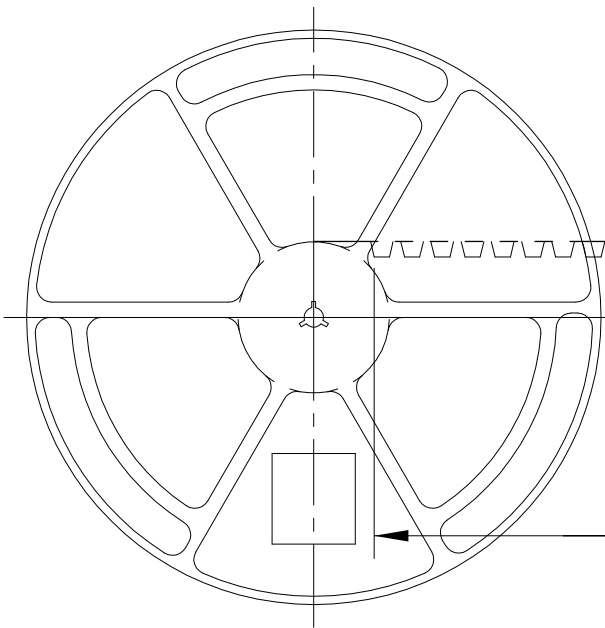
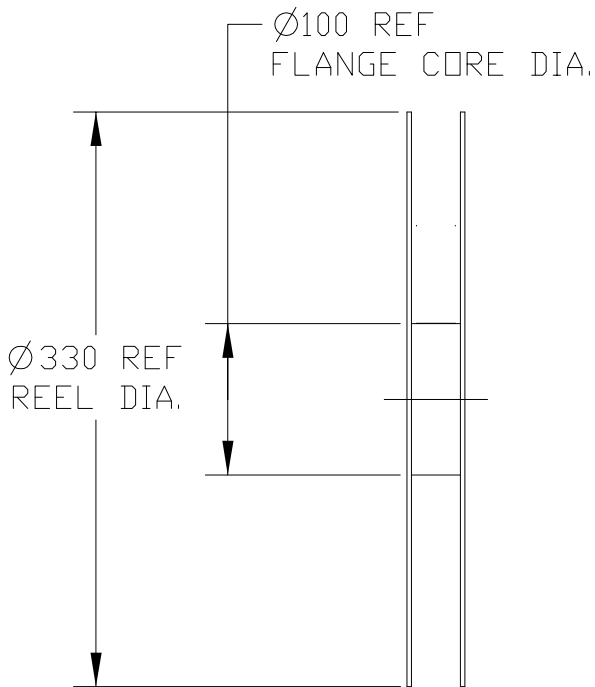
SPEC: ①1.4H SPRING FINGER WITH ②EMBOS ③

Company Name: TE CONNECTIVITY
Tyco Part Number :2108610-5

RoHS

H/F

1. LG PART NO. 2. FINAL INSPECTION(YYYMMDD)
3. VENDOR PRODUCTION LOT NO. 4. VENDOR CODE



WEEDING THE COVER TAPE,
AROUND THE OUTER
PERIPHERY IN
A TURN.

165°~180°
PEELING ANGLE
0.1~1.0 N
PEELING FORCE

WITH PRODUCT CHARGE
9000EA/1REEL

WITHOUT CHARGE
400mm REF.

160mmREF
WITHOUT CHARGE

13.4 REF

19.4 REF
REEL WIDTH

THIS DRAWING IS A CONTROLLED DOCUMENT.

DIMENSIONS:

mm

TOLERANCES UNLESS
OTHERWISE SPECIFIED:

0 PLC ±-
1 PLC ±0.5
2 PLC ±0.13
3 PLC ±0.013
4 PLC ±0.0001
ANGLES ±-
FINISH -

MATERIAL

-

DWN

08FEB2013

CHK

08FEB2013

APVD

08FEB2013

PRODUCT SPEC

108-XXXXX

APPLICATION SPEC

WEIGHT

-

CUSTOMER DRAWING

TE

TE Connectivity

SPRING FINGER 1.4H

SIZE

CAGE CODE

DRAWING NO

RESTRICTED TO

A3

00779

C=C_2108610

SCALE 20:1

SHEET 2 OF 3

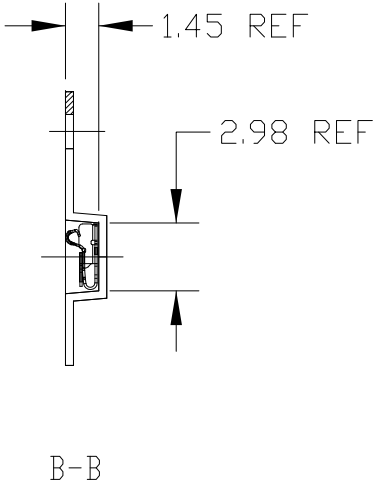
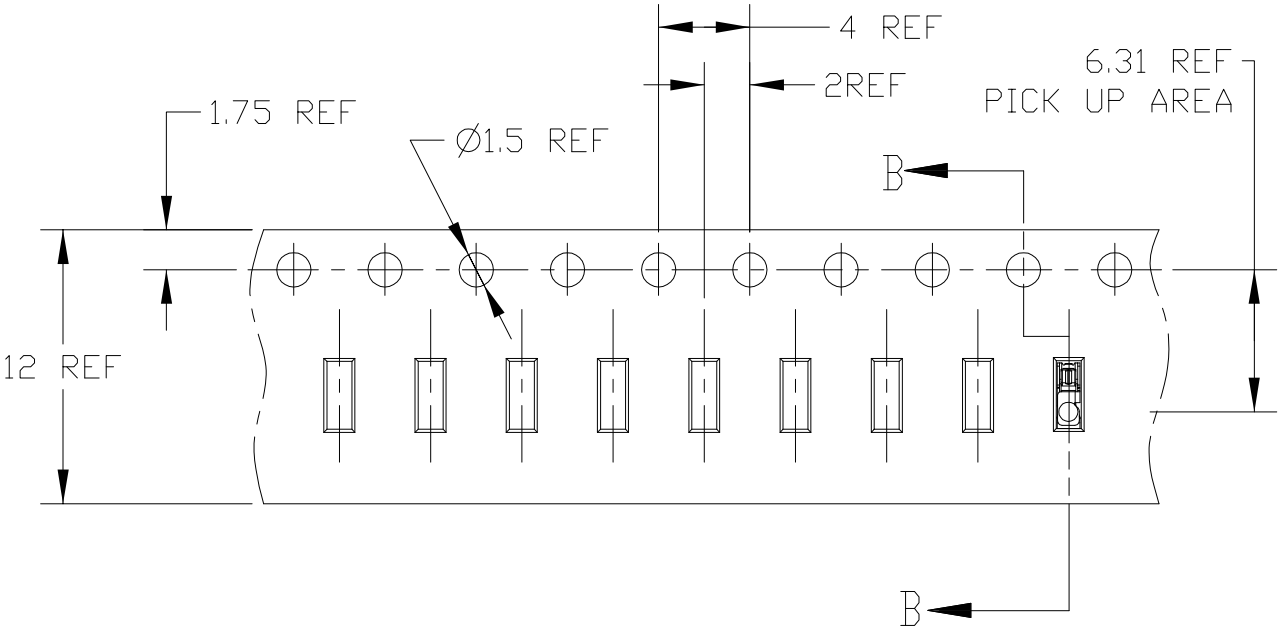
REV C2

LOC —	DIST —	REVISIONS					
		P	LTR	DESCRIPTION	DATE	DWN	APVD
				SEE SHEET 1			

①④ <2108610-6 : EAG63652301>



DIRECTION OFF TOP OF REEL



①

EAG63652301-YYYYMMDD-*****-HK000120

SPEC: 1.4H SPRING FINGER WITH EMBOSS

Company Name: TE CONNECTIVITY

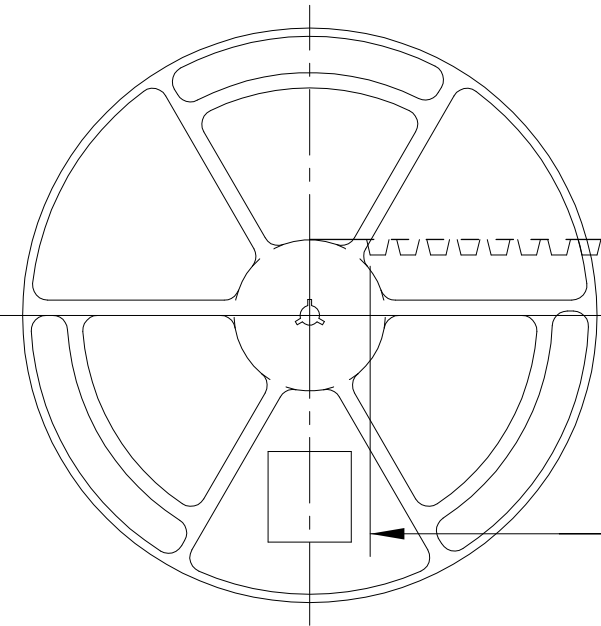
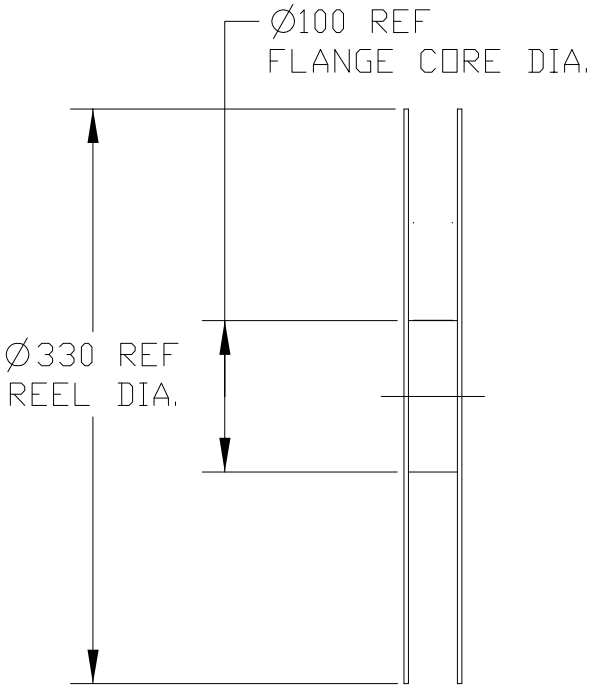
Tyco Part Number : 2108610-5

RoHS

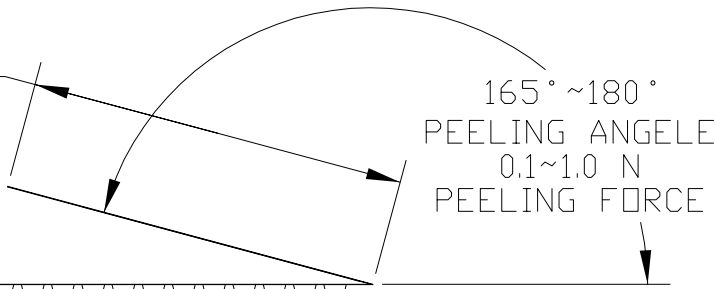
H/F

70

1. LG PART NO.
2. FINAL INSPECTION<YYMMDD>
3. VENDOR PRODUCTION LOT NO.
4. VENDOR CODE



WEEDING THE COVER TAPE,
AROUND THE OUTER
PERIPHERY IN
A TURN.



WITH PRODUCT CHARGE 9000EA/1REEL

WITHOUT CHARGE 400mm REF.

160mmREF
WITHOUT CHARGE

13.4 REF

19.4 REF
REEL WIDTH

THIS DRAWING IS A CONTROLLED DOCUMENT.		DWN	JH GONG	08FEB2013	TE Connectivity		
		CHK	JH KIM	08FEB2013			
		APVD	JH KIM	08FEB2013			
		PRODUCT SPEC	108-XXXXX				
DIMENSIONS: mm		TOLERANCES UNLESS OTHERWISE SPECIFIED:		NAME		SPRING FINGER 1.4H	
		0 PLC ±-		APPLICATION SPEC		SIZE	RESTRICTED TO
		1 PLC ±0.5		-		CAGE CODE	
		2 PLC ±0.13		WEIGHT		DRAWING NO	
		3 PLC ±0.013		CUSTOMER DRAWING		A300779 ©=C_2108610	
		4 PLC ±0.0001				SCALE	
MATERIAL -		FINISH -				SHEET	
						OF	
						3	
						REV	
						C2	

Mouser Electronics

Authorized Distributor

Click to View Pricing, Inventory, Delivery & Lifecycle Information:

[TE Connectivity:](#)

[2108610-6](#)