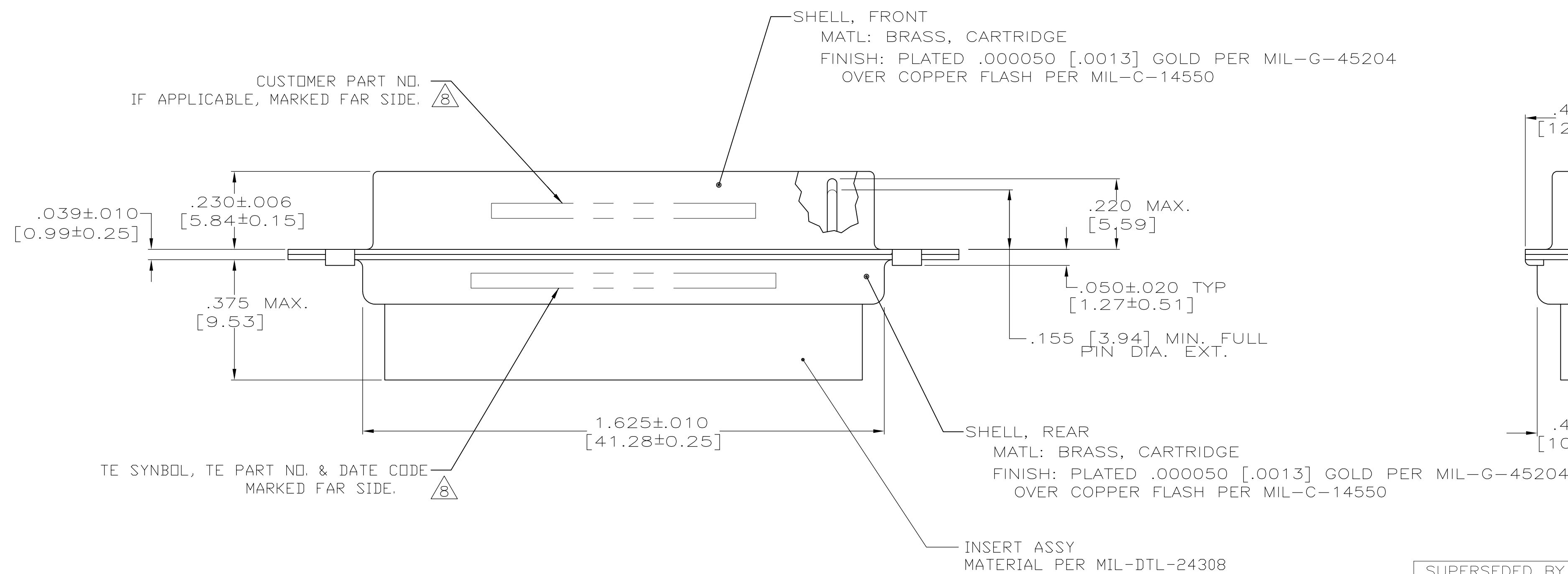
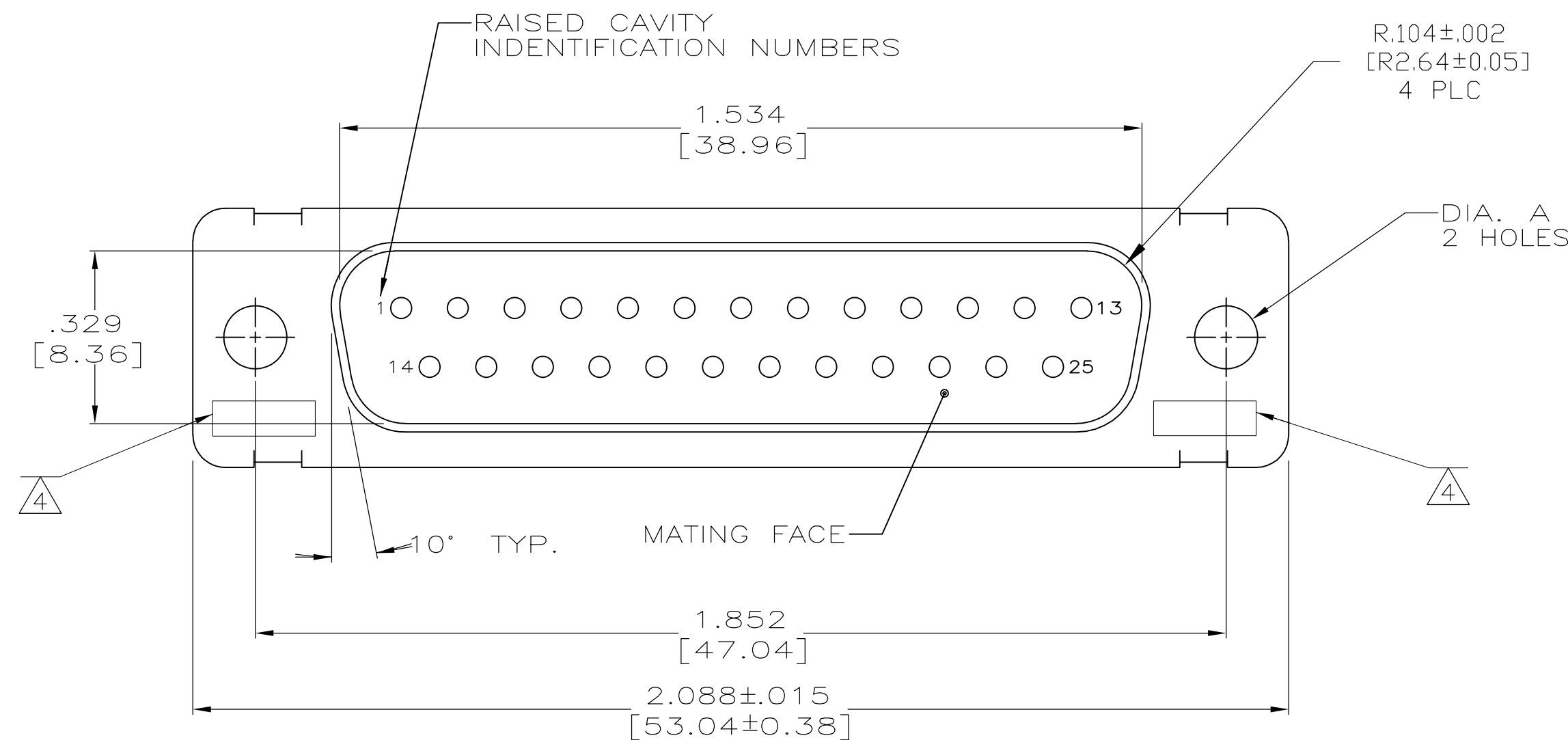




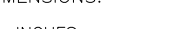


LOC —	DIST —	REVISIONS						
		P	LTR	DESCRIPTION	DATE	DWN	APVD	
			P	REV PER ECO 15-010604	11-9-15	CT	CD	

1. THIS PLUG WILL MATE WITH ANY RECEPTACLE CONNECTOR WITH SAME INSERT ARRANGEMENT AS DEFINED BY MS18275-1.
2. MAXIMUM WIRE INSULATION USED WITH THIS PLUG IS .072 [1.83] DIA. MAX.
3. Be-Cu RETENTION CLIPS ARE INCLUDED IN INSERTS.
4. UL/CSA DESIGNATION STAMPED IN THIS AREA, OPTIONAL.
5. RESTRICTED TO CAE ELECTRONICS ONLY.
6. THESE CONNECTORS ARE QUALIFIED TO GODDARD SPACE FLIGHT CENTER SPECIFICATION S-311-P-4.
7. CONTACT NOT INCLUDED - SHOWN FOR DIMENSIONAL REFERENCE ONLY.
8. FAR SIDE REFERS TO WIDE SIDE OF KEYSTONE.



SUPERSEDED BY 1996076-3		.120 [3.05]	8333648P4	206800-8	206800-8
		.120 [3.05]	570513-8	206800-7	206800-7
		 .120 [3.05]	311P409-3P-B-12	206800-2	206800-6
OBSOLETE		.120 [3.05]	---	206800-5	206800-5
OBSOLETE		.120 [3.05]	2A014-003V-001	206800-4	206800-4
		.154 [3.91]	---	206800-3	206800-3
		 .120 [3.05]	311P409-3P-B-12	206800-2	206800-2
		 .154 [3.91]	311P409-3P-B-15	206800-1	206800-1
REMARKS		DIA A	CUSTOMER P/N ON CONNECTOR	TE P/N ON CONNECTOR	AMP P/N

THIS DRAWING IS A CONTROLLED DOCUMENT.		DIN 1-3-89 M_CLOUSER DWG 1-6-89 A-EMADI APVD A-EMADI 1-6-89		 TE Connectivity	
DIMENSIONS: INCHES		TOLERANCES UNLESS OTHERWISE SPECIFIED: 0 PLC ± — 1 PLC ± — 2 PLC ± — 3 PLC ± .005 [0.13] 4 PLC ± — ANGLES ± 0°30'		NAME AMPLIMITE NONMAGNETIC PLUG ASSEMBLY WITHOUT SIZE 20 PIN CONTACTS, SERIES 109, SELL SIZE 3, 25 POSITION	
		PRODUCT SPEC APPLICATION SPEC		SIZE CAGE CODE DRAWING NO	
MATERIAL SEE CALLOUTS		FINISH SEE CALLOUTS		RESTRICTED TO A1 00779 C-206800	
		WEIGHT —		SCALE 4:1 SHEET 1 OF 1 REV P	
CUSTOMER DRAWING					

Mouser Electronics

Authorized Distributor

Click to View Pricing, Inventory, Delivery & Lifecycle Information:

[TE Connectivity:](#)

[311P409-3P-B-12](#)