

4

3

2

1

THIS DRAWING IS UNPUBLISHED.

RELEASED FOR PUBLICATION

© COPYRIGHT

ALL RIGHTS RESERVED.

LOC

DIST


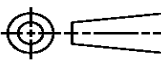
REVISIONS

P	LTR	DESCRIPTION	DATE	DWN	APVD
	C2	ECR-14-002389	21FEB14	RS	LZ

REPLACED BY OCEAN STYLE APPLICATOR PART
NUMBER 2-2151077-1

FOR REPLACEMENT PARTS FOR APPLICATOR 2047307
REFER TO ADDITIONAL PAGE(S). SPARE PARTS KIT (IF LISTED)
WILL REMAIN AVAILABLE.

THE REPLACEMENT OCEAN STYLE APPLICATOR HAS THE
SAME TERMINATOR/PRESS INTERFACE AS APPLICATOR
2047307

THIS DRAWING IS A CONTROLLED DOCUMENT.		DWN R.SHEN		 TE Connectivity			
DIMENSIONS:		CHK LJ.ZHANG					
		APVD U.GUO		NAME HDE APPLICATOR, SIDE FEED			
		PRODUCT SPEC					
		MATERIAL		APPLICATION SPEC		RESTRICTED TO	
FINISH		WEIGHT		SIZE A3	CAGE CODE	DRAWING NO C- 2047307	
CUSTOMER ACCESSIBLE PRODUCTION DRAWING				SCALE	SHEET 1 OF 2	REV C2	

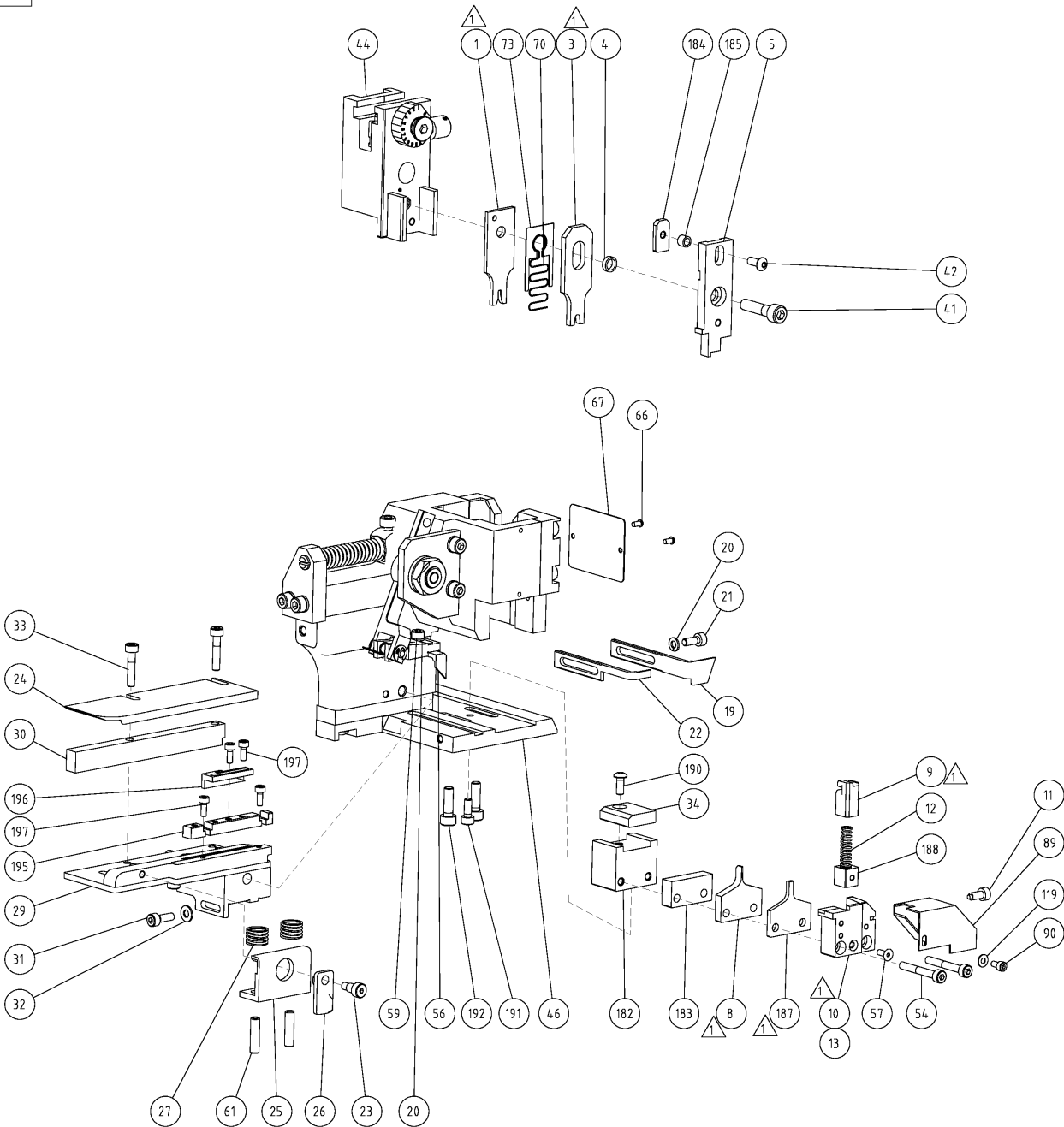
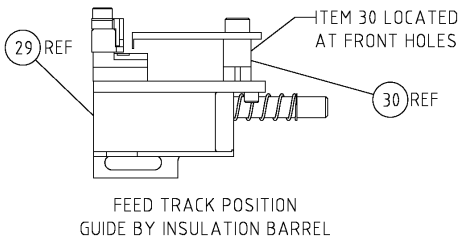
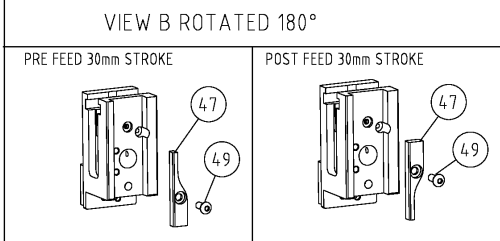
THIS DRAWING IS UNPUBLISHED. RELEASED FOR PUBLICATION				
COPYRIGHT BY TYCO ELECTRONICS CORPORATION. ALL RIGHTS RESERVED.				
PART NUMBER	REV	TERMINATOR	FEED TYPE	DESCRIPTION
204.7307-1	C	LEADMAKER	MECH POST FEED	CUTS CARRIER
204.7307-2	C	BENCH	MECH PRE FEED	CUTS CARRIER
204.7307-6	C	LEADMAKER	MECH POST FEED	CONTINUOUS CARRIER
7-204.7307-1	C	LEADMAKER	MECH POST FEED	-1 AND SPARE PARTS
7-204.7307-2	C	BENCH	MECH PRE FEED	-2 AND SPARE PARTS
7-204.7307-6	C	LEADMAKER	MECH POST FEED	-6 AND SPARE PARTS
7-204.7307-7	A	-	-	SPARE PARTS KIT

CRIMP DATA		TE	TERMINAL	TE	CRIMP SPECS
TERMINAL NAME: GIC 3.5 CONTACT (L)					
CRIMP	SIZE	TYPE		RANGE	
WIRE	1.78	F		0.3-0.9 mm ²	
INSUL	2.79	F		1.5-2.7 mm	
WIRE STRIP LENGTH 3.0-4.0 mm		APPL INSTRUCTIONS 412-5724, 412-5724-1, 412-5724-2			
TERMINAL APPL SPEC 114-5306		FEED 9.7 mm			

TERMINALS APPLIED			
1565079	REC.	-	-
1565080	TAB	-	-
-	-	-	-
-	-	-	-
-	-	-	-

WIRE SIZE	CRIMP HEIGHT	REF SETTING
0.34 mm ²	0.92 ±0.05 mm	-
0.51 mm ²	1.01 ±0.05 mm	-
0.76 mm ²	1.20 ±0.05 mm	-
-	-	-
-	-	-
-	-	-
-	-	-
-	-	-
-	-	-
-	-	-

- RECOMMENDED SPARE PARTS.
2. LUBRICATE AND GREASE PER THE APPLICATOR INSTRUCTION SHEET SUPPLIED WITH THE APPLICATOR.
3. CERTAIN TERMINALS REQUIRE LUBRICATION. REFER TO THE APPLICATOR INSTRUCTION SHEET FOR MORE INFORMATION.



-	1	1	1	1	1	1	-	1633768-2	DOCUMENTATION PACKAGE	198
-	4	4	4	4	4	4	-	18023-3	SCR, SKT HD CAP M3 X 8.0	197
-	1	1	1	1	1	1	-	1762991-1	PLATE, STROKE ADJ	196
-	1	1	1	1	1	1	-	1762992-1	FRONT, STRIP GUIDE	195
-	2	2	2	2	2	2	-	2-18023-0	SCR, SKT HD CAP M5 X 16.0	192
-	1	1	1	1	1	1	-	1-18023-1	SCR, SKT HD CAP M4 X 10.0	191
-	1	1	1	1	1	1	-	18024-7	SCR, BTN SKT HD CAP (M4 X 10.0)	190
-	1	1	1	1	1	1	-	1762301-1	SUPPORT, SPRING	188
1	1	1	1	1	1	1	-	3-1762311-2	INSULATION ANVIL, SIDE FEED	187
-	1	1	1	1	1	1	-	1891652-1	COLLAR, INS BLOCK	185
-	1	1	1	1	1	1	-	1891650-2	BLOCK, INS CRIMPER	184
-	1	1	1	1	1	1	-	1762328-2	SPACER, ANVIL	183
-	1	1	1	1	1	1	-	1762303-1	BLOCK, LOWER TOOL	182
-	1	1	1	1	1	1	-	18027-1	WASHER, FLAT, REG M3	119
-	1	1	1	1	1	1	-	18023-2	SCR, SKT HD CAP (M3 X 6.0)	90
-	1	1	1	1	1	1	-	1999035-3	GUARD, CHIP	89
-	1	1	1	1	1	1	-	1891631-1	GUIDE, DEPRESSOR WIRE	73
-	1	1	1	1	1	1	-	1729332-1	SPRING, DEPRESSOR WIRE	70
-	1	1	1	1	1	1	-	1999134-1	DATA PLATE, APPL, HD-E	67
-	2	2	2	2	2	2	-	21017-2	SCREW, DRIVE	66
-	2	2	2	2	2	2	-	2-18031-8	SCR, SET, CUP POINT M5 X 20.0	61
-	1	1	1	1	1	1	-	1-18023-0	SCR, SKT HD CAP M4 X 8.0	59
-	1	1	1	1	1	1	-	985575-2	SCR, FLT SKT HD CAP M3 X 8.0	57
-	1	1	1	1	1	1	-	1999075-1	FEED, PAWL	56
-	2	2	2	2	2	2	-	1-18023-6	SCR, SKT HD CAP M4 X 30.0	54
-	1	1	1	1	1	1	-	18024-7	SCR, BTN SKT HD CAP (M4 X 10.0)	49
-	1	1	1	1	1	1	-	1673986-1	CAM, HYBRID APPL	47
-	1	1	1	1	1	1	-	1552100-2	APPLICATOR SUBASSEMBLY, HDE	46
-	1	1	1	1	1	1	-	1552102-3	RAM ASSEMBLY, HDE SIDE-FEED	44
-	1	1	1	1	1	1	-	18024-6	SCR, BTN SKT HD CAP (M4 X 8.0)	42
-	1	1	1	1	1	1	-	3-18023-0	SCR, SKT HD CAP M6 X 25.0	41
-	1	1	1	1	1	1	-	1-1762300-0	SUPPORT, TERMINAL	34
-	2	2	2	2	2	2	-	1-18023-4	SCR, SKT HD CAP M4 X 20.0	33
-	1	1	1	1	1	1	-	18027-2	WASHER, FLAT, REG M4	32
-	1	1	1	1	1	1	-	1-18023-2	SCR, SKT HD CAP M4 X 12.0	31
-	1	1	1	1	1	1	-	1320908-1	SPACER, STRIP GUIDE	30
-	1	1	1	1	1	1	-	1552112-1	STRIP GUIDE ASSEMBLY	29
-	2	2	2	2	2	2	-	1-22284-0	SPRING, COMPRESSION	27
-	1	1	1	1	1	1	-	356835-1	LEVER, DRAG RELEASE	26
-	1	1	1	1	1	1	-	240792-1	DRAG, TERMINAL	25
-	1	1	1	1	1	1	-	1320928-1	PLATE, STRIP GUIDE	24
-	1	1	1	1	1	1	-	980371-4	SCR, SKT HD SHLDR 5.0 DIA X 6.0	23
-	1	1	1	1	1	1	-	918704-5	STRIPPER	22
-	1	1	1	1	1	1	-	1-18023-1	SCR, SKT HD CAP M4 X 10.0	21
-	2	2	2	2	2	2	-	18025-2	WASHER, SPRG LOCK, REG M4	20
-	1	1	1	1	1	1	-	1338987-4	STRIPPER	19
-	1	1	1	1	1	1	-	204.7233-2	SHEAR HOLDER, FRONT(NO-CUT)	13
-	1	1	1	1	1	1	-	3-22280-3	SPRING, COMPRESSION	12
-	1	1	1	1	1	1	-	1729602-1	STOP, SHEAR	11
-	1	1	1	1	1	1	-	204.7231-2	SHEAR HOLDER, FRONT	10
-	1	1	1	1	1	1	-	204.7437-1	FLOATING SHEAR, FRONT	9
1	1	1	1	1	1	1	-	3-1762310-1	WIRE, ANVIL SIDE FEED	8
-	1	1	1	1	1	1	-	1762981-1	DEPRESSOR, SHEAR	5
-	1	1	1	1	1	1	-	1891658-3	CRIMPER SPACER, INSULATION	4
1	1	1	1	1	1	1	-	2-1762326-3	INSULATION CRIMPER	3
1	1	1	1	1	1	1	-	2-1762325-9	WIRE CRIMPER	1

SET UP GAGE
1552105-1

REVISIONS			
REV	DATE	BY	APPD
C1	21FEB2012	L.Z	S.X

THIS DRAWING IS A CONTROLLED DOCUMENT.			
DIMENSIONS: 単位: 寸 mm	TOLERANCES, UNLESS OTHERWISE SPECIFIED: — 単位: 寸 mm	DATE: 01DEC2008 BY: S. NAKA CHK: S. YABE APPD: S. YABE 01DEC2008	NAME: S. YABE
PRODUCT SPEC: 製品規格	APPLICATION SPEC: 動作・適用規格	SIZE: A1	CAGE CODE: 00779
MATERIAL: 材質	FINISH: 仕上	WEIGHT:	CUSTOMER: DRAWING
SCALE: 1:1			
SHEET: 1 OF 1			
REV: C1			
CUSTOMER ACCESSIBLE PRODUCTION DRAWING			

Mouser Electronics

Authorized Distributor

Click to View Pricing, Inventory, Delivery & Lifecycle Information:

[TE Connectivity:](#)

[2047307-2](#)