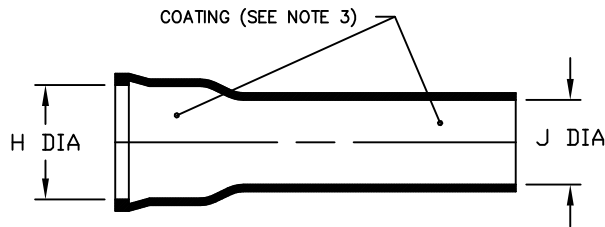
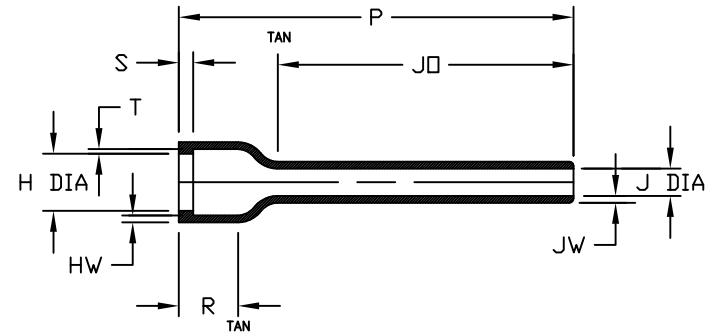


NOTES:

1. ALL DIMENSIONS ARE IN $\frac{\text{INCHES}}{\text{[MILLIMETERS]}}$
2. DIMENSIONS APPEARING IN TABLE ARE AS FOLLOWS:
- a - AS SUPPLIED
 - b - AFTER UNRESTRICTED RECOVERY
3. COATING IS OPTIONAL. AS SUPPLIED DIMENSIONS APPEARING IN TABLE ARE FOR UNCOATED PARTS. WHEN COATING IS ADDED, ENTRY DIAMETERS WILL BE REDUCED BY .06 MAX.
4. "S" & "T" DIMENSIONS APPLY TO A MINIMUM OF 240° OF CIRCUMFERENCE



AS SUPPLIED



AFTER UNRESTRICTED RECOVERY

REVISIONS		
LTR	DESCRIPTION	DATE
U2	REVISED PER ECO-14-003735	03/05/14

TABLE OF DIMENSIONS


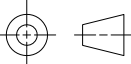
PART NUMBER	H		J		P	R	JO	HW	JW	S	T
	Min	Max	Min	Max							
	a	b	a	b							
202F211	$\frac{.94}{[23,9]}$	$\frac{.39}{[9,9]}$	$\frac{.68}{[17,3]}$	$\frac{.26}{[6,6]}$	$\frac{4.17}{[105,9]}$	$\frac{.46}{[11,7]}$	$\frac{3.40}{[86,4]}$	$\frac{.06}{[1,5]}$	$\frac{.06}{[1,5]}$	$\frac{.06}{[1,5]}$	$\frac{.05}{[1,3]}$
202F221	$\frac{1.07}{[27,2]}$	$\frac{.52}{[13,2]}$	$\frac{.82}{[20,8]}$	$\frac{.30}{[7,6]}$	$\frac{4.77}{[121,2]}$	$\frac{.48}{[12,2]}$	$\frac{3.88}{[98,6]}$	$\frac{.06}{[1,5]}$	$\frac{.06}{[1,5]}$	$\frac{.06}{[1,5]}$	$\frac{.05}{[1,3]}$
202F232	$\frac{1.22}{[31,0]}$	$\frac{.73}{[18,5]}$	$\frac{.96}{[24,4]}$	$\frac{.35}{[8,9]}$	$\frac{5.46}{[138,7]}$	$\frac{.48}{[12,2]}$	$\frac{4.44}{[112,8]}$	$\frac{.07}{[1,8]}$	$\frac{.06}{[1,5]}$	$\frac{.07}{[1,8]}$	$\frac{.05}{[1,3]}$
202F242	$\frac{1.40}{[35,6]}$	$\frac{.87}{[22,1]}$	$\frac{1.13}{[28,7]}$	$\frac{.40}{[10,2]}$	$\frac{6.28}{[159,5]}$	$\frac{.48}{[12,2]}$	$\frac{5.15}{[130,8]}$	$\frac{.07}{[1,8]}$	$\frac{.06}{[1,5]}$	$\frac{.07}{[1,8]}$	$\frac{.05}{[1,3]}$
202F253	$\frac{1.53}{[38,9]}$	$\frac{1.11}{[28,2]}$	$\frac{1.24}{[31,5]}$	$\frac{.43}{[10,9]}$	$\frac{7.00}{[177,8]}$	$\frac{.55}{[14,0]}$	$\frac{5.60}{[142,2]}$	$\frac{.07}{[1,8]}$	$\frac{.06}{[1,5]}$	$\frac{.07}{[1,8]}$	$\frac{.07}{[1,8]}$
202F263	$\frac{1.78}{[45,2]}$	$\frac{1.27}{[32,3]}$	$\frac{1.51}{[38,4]}$	$\frac{.50}{[12,7]}$	$\frac{8.00}{[203,2]}$	$\frac{.60}{[15,2]}$	$\frac{6.42}{[163,1]}$	$\frac{.07}{[1,8]}$	$\frac{.06}{[1,5]}$	$\frac{.07}{[1,8]}$	$\frac{.07}{[1,8]}$
202F274	$\frac{2.03}{[51,6]}$	$\frac{1.62}{[41,1]}$	$\frac{1.79}{[45,5]}$	$\frac{.59}{[15,0]}$	$\frac{8.00}{[203,2]}$	$\frac{.60}{[15,2]}$	$\frac{6.21}{[157,7]}$	$\frac{.07}{[1,8]}$	$\frac{.07}{[1,8]}$	$\frac{.07}{[1,8]}$	$\frac{.07}{[1,8]}$

IF THIS DOCUMENT IS PRINTED IT BECOMES UNCONTROLLED.
CHECK FOR THE LATEST REVISION.

Raychem Molded Parts
CUSTOMER DRAWING

COMPATIBILITY CHART

MATERIAL DASH NO.	MATERIAL DESCRIPTION	RT SPEC	COATING SLASH NUMBER	COATING S NUMBER
-50	Flexible, VPB	RT-1313	N/A	
-51	Flexible, EPB	RT-1321	/86,/164,/180	S-1048;S-1124;S-1030/1
-71	Flexible, Polyolefin	RT-1316	/42,/86,/180	S-1017;S-1048;S-1030/1
-770	NBCCS	RT-770 TYPE II	N/A	

UNLESS OTHERWISE SPECIFIED DIMENSIONS ARE INCHES. METRIC DIMENSIONS ARE IN BRACKETS. DECIMAL TOLERANCES .XXX ± 0.005 [0.13 mm] .XX ± 0.01 [0.25 mm] .X ± 0.1 [0.50 mm] ANGLE TOLERANCE .X ± 1 DEG. TE CONNECTIVITY RESERVES THE RIGHT TO AMEND THIS DRAWING AT ANY TIME. USERS SHOULD EVALUATE THE SUITABILITY OF THE PRODUCT FOR THEIR APPLICATION. © 2013 Tyco Electronics Corporation, a TE connectivity Ltd. company. All rights reserved.	DRAWN MMazariegos	 TE Connectivity	
	APPROVED SGravano		
	THIRD ANGLE PROJECTION 	TITLE Boot, Straight With Lip	
		SIZE B	CODE IDENT. NO. 06090
		DWG. NO. 202F211thru274	
DO NOT SCALE THIS DRAWING		SHEET 1 OF 1	

Mouser Electronics

Authorized Distributor

Click to View Pricing, Inventory, Delivery & Lifecycle Information:

[TE Connectivity:](#)

[202F221-71/86-0](#)