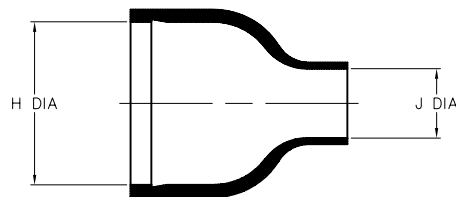
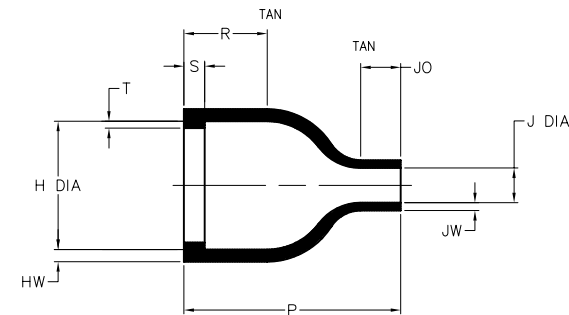


NOTES

- ALL DIMENSIONS ARE IN $\frac{\text{INCHES}}{[\text{MILLIMETERS}]}$
- DIMENSIONS APPEARING IN TABLE ARE AS FOLLOWS:
 - AS SUPPLIED
 - AFTER UNRESTRICTED RECOVERY
- COATING (ADHESIVE) IS OPTIONAL. AS SUPPLIED DIMENSIONS APPEARING IN TABLE ARE FOR UNCOATED PARTS. WHEN COATING IS ADDED, ENTRY DIAMETERS WILL BE REDUCED BY .06 MAX.



AS SUPPLIED



AFTER UNRESTRICTED RECOVERY

TABLE OF DIMENSIONS

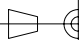
PART NUMBER	H		J		P ±10% b	R ±10% b	S ±10% b	T ±10% b	HW ±20% b	JW ±20% b	JO ±10% b
	MIN	MAX	MIN	MAX							
	a	b	a	b							
202E532	1.16 [29,5]	.74 [18,8]	.55 [14,0]	.20 [5,1]	1.25 [31,7]	.48 [12,2]	.12 [3,0]	.04 [1,0]	.07 [1,8]	.045 [1,1]	.23 [5,8]


If this document is printed it becomes uncontrolled. Check for the latest revision

CUSTOMER DRAWING

COMPATIBILITY CHART

MATERIAL DASH NO.	MATERIAL DESCRIPTION	RT SPEC	COATING NO.	COATING SPEC
-25	ELASTOMER, FLUID RESISTANT	RT-1325	/86	S-1048
			/225	S-1206

UNLESS OTHERWISE SPECIFIED DIMENSIONS ARE INCHES. METRIC DIMENSIONS ARE IN BRACKETS.		DRAWN UNGUYEN	DATE 03/26/2008
DECIMAL TOLERANCES .XXX ± 0.005 [0.13 mm] .XX ± 0.01 [0.25 mm] .X ± 0.1 [0.50 mm]		RPN	
ANGLE TOLERANCE .X ± 1 DEG.		THIRD ANGLE PROJECTION	
			
© 2007-2008 Tyco Electronics Corporation. All rights reserved.			

 Tyco Electronics		Raychem Molded Parts 305 Constitution Dr Menlo Park, CA 94025	
TITLE			
BOOT, STRAIGHT, WITH LIP			
SIZE	CODE IDENT. NO.	DWG. NO.	
B	06090		202E532
DO NOT SCALE THIS DRAWING			SHEET 1 OF 1

Mouser Electronics

Authorized Distributor

Click to View Pricing, Inventory, Delivery & Lifecycle Information:

[TE Connectivity:](#)

[202E532-25/86-0](#)