

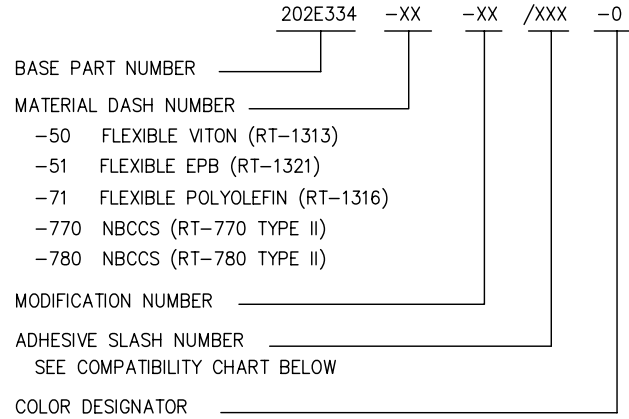
NOTES

1. ALL DIMENSIONS ARE IN $\frac{\text{INCHES}}{[\text{MILLIMETERS}]}$

2. DIMENSIONS APPEARING IN TABLE ARE AS FOLLOWS:
 a - AS SUPPLIED
 b - AFTER UNRESTRICTED RECOVERY

3 COATING (ADHESIVE): IS OPTIONAL AS SUPPLIED DIMENSIONS APPEARING IN TABLE ARE FOR UNCOATED PARTS. WHEN COATING IS ADDED, ENTRY DIAMETER WILL BE REDUCED BY .06 MAX.

4. ORDERING INFORMATION:



COLOR DESIGNATOR _____

MODIFICATION NUMBER _____

ADHESIVE SLASH NUMBER _____
 SEE COMPATIBILITY CHART BELOW

- 50 FLEXIBLE VITON (RT-1313)
- 51 FLEXIBLE EPB (RT-1321)
- 71 FLEXIBLE POLYOLEFIN (RT-1316)
- 770 NBCCS (RT-770 TYPE II)
- 780 NBCCS (RT-780 TYPE II)

BASE PART NUMBER _____

MATERIAL DASH NUMBER _____

-50 FLEXIBLE VITON (RT-1313)

-51 FLEXIBLE EPB (RT-1321)

-71 FLEXIBLE POLYOLEFIN (RT-1316)

-770 NBCCS (RT-770 TYPE II)

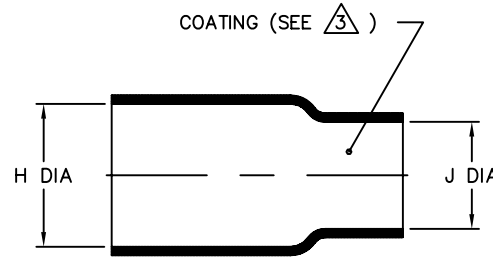
-780 NBCCS (RT-780 TYPE II)

MODIFICATION NUMBER _____

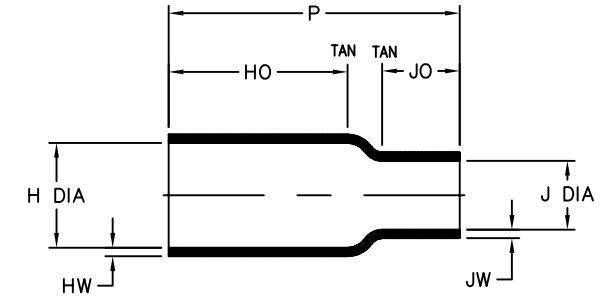
ADHESIVE SLASH NUMBER _____
 SEE COMPATIBILITY CHART BELOW

COLOR DESIGNATOR _____

REVISIONS		
LTR	DESCRIPTION	DATE
T	ECO-09-016592	07/15/2009



AS SUPPLIED



AFTER UNRESTRICTED RECOVERY

PART DESCRIPTION	H		J		P ±10% b	HO ±10% b	JO ±10% b	HW ±25% b	JW ±25% b
	MIN	MAX	MIN	MAX					
	a	b	a	b					
202E334	.50 [12,7]	.42 [10,7]	.44 [11,2]	.11 [2,8]	2.50 [63,5]	1.62 [41,1]	.62 [15,7]	.06 [1,52]	.06 [1,52]
202E336	.82 [20,8]	.42 [10,7]	.81 [20,6]	.21 [5,3]	2.50 [63,5]	1.62 [41,1]	.65 [16,5]	.06 [1,52]	.06 [1,52]
202E344	.87 [22,1]	.74 [18,8]	.44 [11,2]	.10 [2,5]	2.10 [53,3]	1.10 [27,9]	.62 [15,7]	.09 [2,29]	.06 [1,52]
202E346	.87 [22,1]	.74 [18,8]	.81 [20,6]	.31 [7,9]	2.10 [53,3]	1.10 [27,9]	.55 [14,0]	.09 [2,29]	.06 [1,52]

If this document is printed it becomes uncontrolled. Check for the latest revision

COMPATIBILITY CHART

MATERIAL DASH NO.	ADHESIVE (COATING) SLASH NO.	ADHESIVE (COATING) S NO.
-50	N/A	N/A
-51	/86; /164; /180	S-1048; S-1124; S-1030
-71	/42; /86; /180	S-1017; S-1048; S-1030
-770	N/A	N/A
-780	N/A	N/A

UNLESS OTHERWISE SPECIFIED DIMENSIONS ARE INCHES. METRIC DIMENSIONS ARE IN BRACKETS.
 DECIMAL TOLERANCES
 .XXX ± 0.005 [0.13 mm]
 .XX ± 0.01 [0.25 mm]
 .X ± 0.1 [0.50 mm]
 ANGLE TOLERANCE
 .X ± 1 DEG.
 TYCO ELECTRONICS RESERVES THE RIGHT TO AMEND THIS DRAWING AT ANY TIME. USERS SHOULD EVALUATE THE SUITABILITY OF THE PRODUCT FOR THEIR APPLICATION.
 © 2008-2009 Tyco Electronics Corporation. All rights reserved.

DRAWN
YUNGUYEN
 APPROVED
STRAN
 THIRD ANGLE PROJECTION



Raychem Molded Parts
 305 Constitution Dr
 Menlo Park, CA 94025

TITLE
BOOT, STRAIGHT
 SIZE B CODE IDENT. NO. 06090 DWG. NO. 202E334thru346
 DO NOT SCALE THIS DRAWING SHEET 1 OF 1

Mouser Electronics

Authorized Distributor

Click to View Pricing, Inventory, Delivery & Lifecycle Information:

[TE Connectivity:](#)

[202E336-51-0](#)