

## NOTES

1. ALL DIMENSIONS ARE IN  $\frac{\text{INCHES}}{[\text{MILLIMETERS}]}$

2. DIMENSIONS APPEARING IN TABLE ARE AS FOLLOWS:

- a - AS SUPPLIED
- b - AFTER UNRESTRICTED RECOVERY

③ COATING (ADHESIVE): IS OPTIONAL AS SUPPLIED DIMENSIONS APPEARING IN TABLE ARE FOR UNCOATED PARTS. WHEN COATING IS ADDED, ENTRY DIAMETER WILL BE REDUCED BY .06 MAX.

4. ORDERING INFORMATION:

BASE PART NUMBER 202E334 -XX -XX /XXX -0

MATERIAL DASH NUMBER

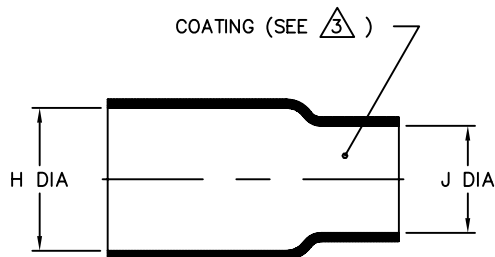
- 50 FLEXIBLE VITON (RT-1313)
- 51 FLEXIBLE EPB (RT-1321)
- 71 FLEXIBLE POLYOLEFIN (RT-1316)
- 770 NBCCS (RT-770 TYPE II)
- 780 NBCCS (RT-780 TYPE II)

MODIFICATION NUMBER

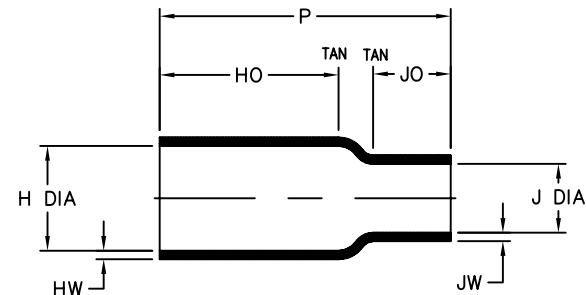
ADHESIVE SLASH NUMBER

SEE COMPATIBILITY CHART BELOW

COLOR DESIGNATOR



AS SUPPLIED



AFTER UNRESTRICTED RECOVERY

TABLE OF DIMENSIONS

PART DESCRIPTION	H		J		P ±10% b	HO ±10% b	JO ±10% b	HW ±25% b	JW ±25% b
	MIN	MAX	MIN	MAX					
	a	b	a	b					
202E334	.50 [12,7]	.42 [10,7]	.44 [11,2]	.11 [2,8]	2.50 [63,5]	1.62 [41,1]	.62 [15,7]	.06 [1,52]	.06 [1,52]
202E336	.82 [20,8]	.42 [10,7]	.81 [20,6]	.21 [5,3]	2.50 [63,5]	1.62 [41,1]	.65 [16,5]	.06 [1,52]	.06 [1,52]
202E344	.87 [22,1]	.74 [18,8]	.44 [11,2]	.10 [2,5]	2.10 [53,3]	1.10 [27,9]	.62 [15,7]	.09 [2,29]	.06 [1,52]
202E346	.87 [22,1]	.74 [18,8]	.81 [20,6]	.31 [7,9]	2.10 [53,3]	1.10 [27,9]	.55 [14,0]	.09 [2,29]	.06 [1,52]

If this document is printed it becomes uncontrolled. Check for the latest revision

## COMPATIBILITY CHART

MATERIAL DASH NO.	ADHESIVE (COATING) SLASH NO.	ADHESIVE (COATING) S NO.
-50	N/A	N/A
-51	/86; /164; /180	S-1048; S-1124; S-1030
-71	/42; /86; /180	S-1017; S-1048; S-1030
-770	N/A	N/A
-780	N/A	N/A

UNLESS OTHERWISE SPECIFIED DIMENSIONS ARE INCHES. METRIC DIMENSIONS ARE IN BRACKETS.

DECIMAL TOLERANCES

.XXX ± 0.005	[0.13 mm]
.XX ± 0.01	[0.25 mm]
.X ± 0.1	[0.50 mm]

ANGLE TOLERANCE

.X ± 1 DEG.

DRAWN  
YUNGUYEN

APPROVED  
STRAN

THIRD ANGLE PROJECTION

## CUSTOMER DRAWING

**Tyco Electronics**

Raychem Molded Parts  
305 Constitution Dr  
Menlo Park, CA 94025

TITLE

BOOT, STRAIGHT

SIZE  
B

CODE IDENT. NO.  
06090

DWG. NO.

202E334thru346

© 2008-2009 Tyco Electronics Corporation. All rights reserved.

DO NOT SCALE THIS DRAWING

SHEET 1 OF 1

# Mouser Electronics

Authorized Distributor

Click to View Pricing, Inventory, Delivery & Lifecycle Information:

[TE Connectivity:](#)

[202E344510CS5324](#)