

NOTES

1. ALL DIMENSIONS ARE IN $\frac{\text{INCHES}}{[\text{MILLIMETERS}]}$

2. DIMENSIONS APPEARING IN TABLE ARE AS FOLLOWS:

- a - AS SUPPLIED
- b - AFTER UNRESTRICTED RECOVERY

③ COATING (ADHESIVE): IS OPTIONAL AS SUPPLIED DIMENSIONS APPEARING IN TABLE ARE FOR UNCOATED PARTS. WHEN COATING IS ADDED, ENTRY DIAMETER WILL BE REDUCED BY .06 MAX.

4. ORDERING INFORMATION:

BASE PART NUMBER 202E334 -XX -XX /XXX -0

MATERIAL DASH NUMBER

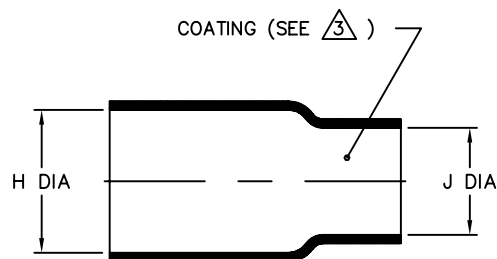
- 50 FLEXIBLE VITON (RT-1313)
- 51 FLEXIBLE EPB (RT-1321)
- 71 FLEXIBLE POLYOLEFIN (RT-1316)
- 770 NBCCS (RT-770 TYPE II)
- 780 NBCCS (RT-780 TYPE II)

MODIFICATION NUMBER

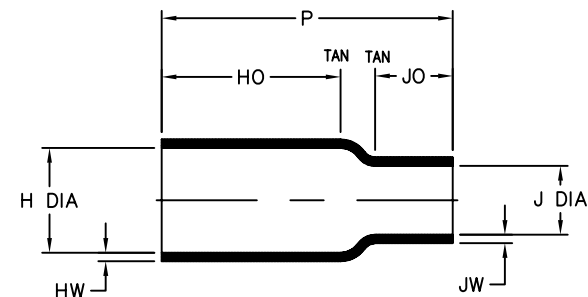
ADHESIVE SLASH NUMBER

SEE COMPATIBILITY CHART BELOW

COLOR DESIGNATOR



AS SUPPLIED



AFTER UNRESTRICTED RECOVERY

TABLE OF DIMENSIONS

| PART DESCRIPTION | H | | J | | P ±10% b | HO ±10% b | JO ±10% b | HW ±25% b | JW ±25% b |
|------------------|---------------|---------------|---------------|--------------|----------------|-----------------|-----------------|-----------------|-----------------|
| | MIN | MAX | MIN | MAX | | | | | |
| | a | b | a | b | | | | | |
| 202E334 | .50 [12,7] | .42 [10,7] | .44 [11,2] | .11 [2,8] | 2.50 [63,5] | 1.62 [41,1] | .62 [15,7] | .06 [1,52] | .06 [1,52] |
| 202E336 | .82 [20,8] | .42 [10,7] | .81 [20,6] | .21 [5,3] | 2.50 [63,5] | 1.62 [41,1] | .65 [16,5] | .06 [1,52] | .06 [1,52] |
| 202E344 | .87 [22,1] | .74 [18,8] | .44 [11,2] | .10 [2,5] | 2.10 [53,3] | 1.10 [27,9] | .62 [15,7] | .09 [2,29] | .06 [1,52] |
| 202E346 | .87 [22,1] | .74 [18,8] | .81 [20,6] | .31 [7,9] | 2.10 [53,3] | 1.10 [27,9] | .55 [14,0] | .09 [2,29] | .06 [1,52] |

If this document is printed it becomes uncontrolled. Check for the latest revision

COMPATIBILITY CHART

| MATERIAL DASH NO. | ADHESIVE (COATING) SLASH NO. | ADHESIVE (COATING) S NO. |
|-------------------|------------------------------|--------------------------|
| -50 | N/A | N/A |
| -51 | /86; /164; /180 | S-1048; S-1124; S-1030 |
| -71 | /42; /86; /180 | S-1017; S-1048; S-1030 |
| -770 | N/A | N/A |
| -780 | N/A | N/A |

UNLESS OTHERWISE SPECIFIED DIMENSIONS ARE INCHES. METRIC DIMENSIONS ARE IN BRACKETS.

DECIMAL TOLERANCES

| | |
|--------------|-----------|
| .XXX ± 0.005 | [0.13 mm] |
| .XX ± 0.01 | [0.25 mm] |
| .X ± 0.1 | [0.50 mm] |

ANGLE TOLERANCE

.X ± 1 DEG.

DRAWN
YUNGUYEN

APPROVED
STRAN

THIRD ANGLE
PROJECTION

Tyco Electronics

Raychem Molded Parts
305 Constitution Dr
Menlo Park, CA 94025

TITLE

BOOT, STRAIGHT

SIZE
B

CODE IDENT. NO.
06090

DWG. NO.

202E334thru346

© 2008-2009 Tyco Electronics Corporation. All rights reserved.

DO NOT SCALE THIS DRAWING

SHEET 1 OF 1

Mouser Electronics

Authorized Distributor

Click to View Pricing, Inventory, Delivery & Lifecycle Information:

[TE Connectivity:](#)

[202E346510CS5324](#)