

NOTES

1. ALL DIMENSIONS ARE IN $\frac{\text{INCHES}}{[\text{MILLIMETERS}]}$

2. DIMENSIONS APPEARING IN TABLE ARE AS FOLLOWS:
 a - AS SUPPLIED
 b - AFTER UNRESTRICTED RECOVERY

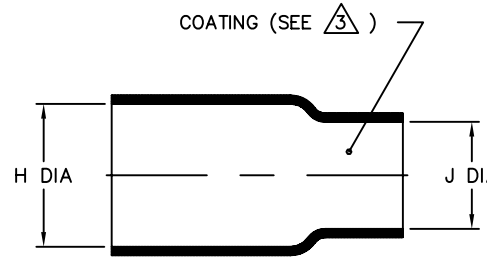
③ COATING (ADHESIVE): IS OPTIONAL AS SUPPLIED DIMENSIONS APPEARING IN TABLE ARE FOR UNCOATED PARTS. WHEN COATING IS ADDED, ENTRY DIAMETER WILL BE REDUCED BY .06 MAX.

4. ORDERING INFORMATION:

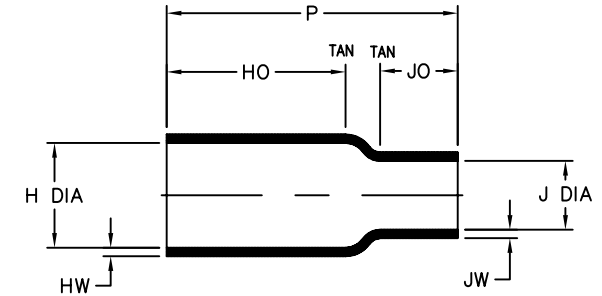
BASE PART NUMBER 202E334 -XX -XX /XXX -0
 MATERIAL DASH NUMBER _____
 -50 FLEXIBLE VITON (RT-1313)
 -51 FLEXIBLE EPB (RT-1321)
 -71 FLEXIBLE POLYOLEFIN (RT-1316)
 -770 NBCCS (RT-770 TYPE II)
 -780 NBCCS (RT-780 TYPE II)
 MODIFICATION NUMBER _____
 ADHESIVE SLASH NUMBER _____
 SEE COMPATIBILITY CHART BELOW
 COLOR DESIGNATOR _____

If this document is printed it becomes uncontrolled. Check for the latest revision

REVISIONS		
LTR	DESCRIPTION	DATE
T	ECO-09-016592	07/15/2009



AS SUPPLIED



AFTER UNRESTRICTED RECOVERY

PART DESCRIPTION	H		J		P ±10% b	HO ±10% b	JO ±10% b	HW ±25% b	JW ±25% b
	MIN	MAX	MIN	MAX					
	a	b	a	b					
202E334	$\frac{.50}{[12,7]}$	$\frac{.42}{[10,7]}$	$\frac{.44}{[11,2]}$	$\frac{.11}{[2,8]}$	$\frac{2.50}{[63,5]}$	$\frac{1.62}{[41,1]}$	$\frac{.62}{[15,7]}$	$\frac{.06}{[1,52]}$	$\frac{.06}{[1,52]}$
202E336	$\frac{.82}{[20,8]}$	$\frac{.42}{[10,7]}$	$\frac{.81}{[20,6]}$	$\frac{.21}{[5,3]}$	$\frac{2.50}{[63,5]}$	$\frac{1.62}{[41,1]}$	$\frac{.65}{[16,5]}$	$\frac{.06}{[1,52]}$	$\frac{.06}{[1,52]}$
202E344	$\frac{.87}{[22,1]}$	$\frac{.74}{[18,8]}$	$\frac{.44}{[11,2]}$	$\frac{.10}{[2,5]}$	$\frac{2.10}{[53,3]}$	$\frac{1.10}{[27,9]}$	$\frac{.62}{[15,7]}$	$\frac{.09}{[2,29]}$	$\frac{.06}{[1,52]}$
202E346	$\frac{.87}{[22,1]}$	$\frac{.74}{[18,8]}$	$\frac{.81}{[20,6]}$	$\frac{.31}{[7,9]}$	$\frac{2.10}{[53,3]}$	$\frac{1.10}{[27,9]}$	$\frac{.55}{[14,0]}$	$\frac{.09}{[2,29]}$	$\frac{.06}{[1,52]}$

COMPATIBILITY CHART

MATERIAL DASH NO.	ADHESIVE (COATING) SLASH NO.	ADHESIVE (COATING) S NO.
-50	N/A	N/A
-51	/86; /164; /180	S-1048; S-1124; S-1030
-71	/42; /86; /180	S-1017; S-1048; S-1030
-770	N/A	N/A
-780	N/A	N/A

UNLESS OTHERWISE SPECIFIED DIMENSIONS ARE INCHES. METRIC DIMENSIONS ARE IN BRACKETS.
 DECIMAL TOLERANCES
 .XXX ± 0.005 [0.13 mm]
 .XX ± 0.01 [0.25 mm]
 .X ± 0.1 [0.50 mm]
 ANGLE TOLERANCE
 .X ± 1 DEG.
 TYCO ELECTRONICS RESERVES THE RIGHT TO AMEND THIS DRAWING AT ANY TIME. USERS SHOULD EVALUATE THE SUITABILITY OF THE PRODUCT FOR THEIR APPLICATION.
 © 2008-2009 Tyco Electronics Corporation. All rights reserved.

DRAWN
YUNGUYEN
 APPROVED
STRAN
 THIRD ANGLE PROJECTION

Tyco Electronics
 Raychem Molded Parts
 305 Constitution Dr
 Menlo Park, CA 94025

TITLE
BOOT, STRAIGHT
 SIZE B CODE IDENT. NO. 06090 DWG. NO. 202E334thru346
 DO NOT SCALE THIS DRAWING SHEET 1 OF 1

Mouser Electronics

Authorized Distributor

Click to View Pricing, Inventory, Delivery & Lifecycle Information:

[TE Connectivity:](#)

[202E334510CS5324](#)