

LOC	DIST	REVISIONS					
		P	LTR	DESCRIPTION	DATE	DWN	APVD
AJ	00		B	REVISED PER ECO-11-024867	14DEC11	KH	FB

D

C

B

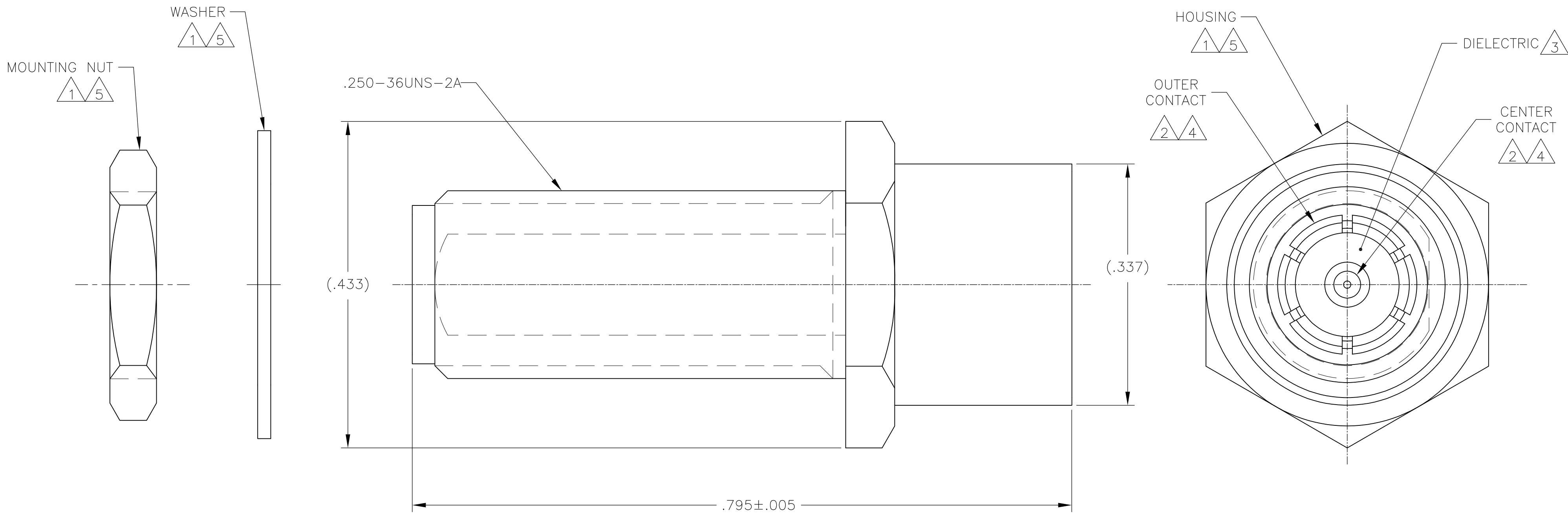
A

D

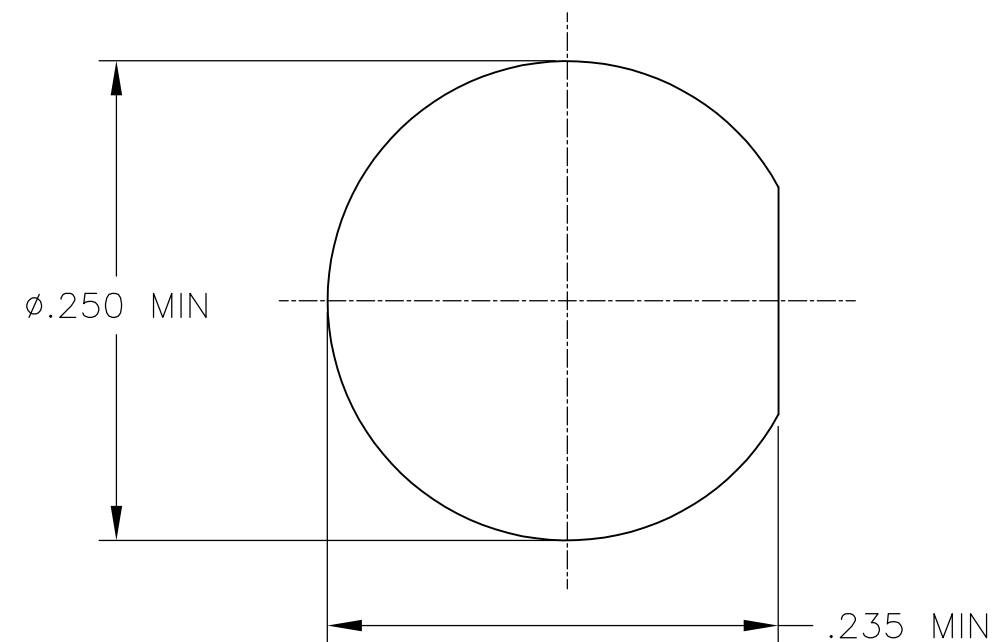
C

B

A





- 1 STAINLESS STEEL.
- 2 BERYLLIUM COPPER.
- 3 PTFE.
- 4 GOLD PLATE.
- 5 PASSIVATE.
- 6. THIS PRODUCT HAS NOT YET COMPLETED VALIDATION TESTING.



RECOMMENDED PANEL CUTOUT

2016232-1

PART NUMBER

THIS DRAWING IS A CONTROLLED DOCUMENT.		DWN K. FOLTZ	08JUN2010	 TE Connectivity			
		CHK F. BLASICK	09JUN2010				
DIMENSIONS: INCHES	TOLERANCES UNLESS OTHERWISE SPECIFIED:	APVD F. BLASICK	09JUN2010	NAME  ADAPTER, PLUG PUSH ON TO JACK, SMA  —			
	0 PLC ± —	PRODUCT SPEC					
	1 PLC ± —	—					
	2 PLC ± —	APPLICATION SPEC					
	3 PLC ± .003	—					
4 PLC ± —	ANGLES ± —	WEIGHT —		SIZE A2	CAGE CODE 00779	DRAWING NO C-2016232	RESTRICTED TO —
MATERIAL —	FINISH —	CUSTOMER DRAWING		SCALE 10:1	SHEET 1 OF 1	REV B	

# Mouser Electronics

Authorized Distributor

Click to View Pricing, Inventory, Delivery & Lifecycle Information:

[TE Connectivity:](#)

[2016232-1](#)