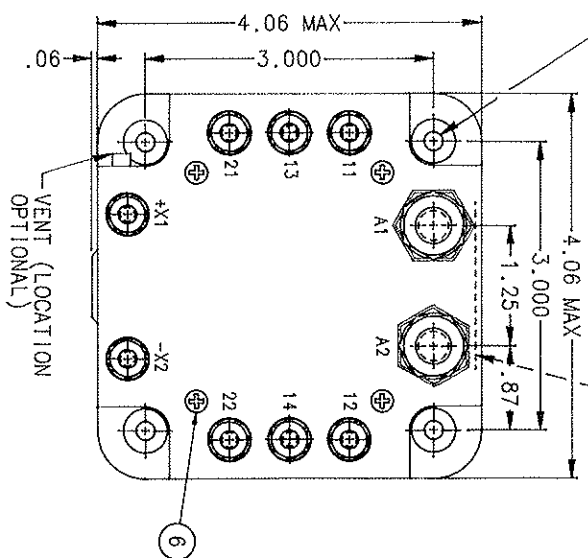


FAA/PMA

REVISIONS		RELEASED	DATE	APPROVED
STA	DESCRIPTION			
D	30763 REDRAWN, FIND NOS 11 & 12 ADDED		96/08/17	RS
E	31784 COIL CIRCUIT REDRAWN, UPDATE COIL RESISTANCE AND P/L.		97/01/14	RS

1.1964.005 DIA HOLE
4 MTG HOLES
(1)(12) (LOCATION OPTIONAL)



CONSTRUCTION
MAIN CONTACTS
CONFIGURATION
VOLTAGE (NOMINAL)
CURRENT

AUXILIARY CONTACTS
CONFIGURATION
VOLTAGE
CURRENT RES.

COIL DATA

DUTY CYCLE
MAX OPERATE
MIN OPERATE
PICKUP AT 25°C
DROPOUT
RESISTANCE AT 25°C
PICKUP
DROPOUT
SUPPRESSION
ENVIRONMENTAL DATA

AMBIENT TEMP.
LIFE ELECTRICAL
LIFE MECHANICAL
WEIGHT MAX. (EST.)

GASKET SEALED (VENTED)

SPST N.O.
28 VDC
400 AMP
1500 AMP INRUSH

SPST NO FORM Z OPERATE BEFORE MAINS CLOSE
28 VDC
5 AMP

CONTINUOUS (ECONOMIZING)

24 VDC
18 VDC
12 V MAX
0.5 - 7 V.
±20%

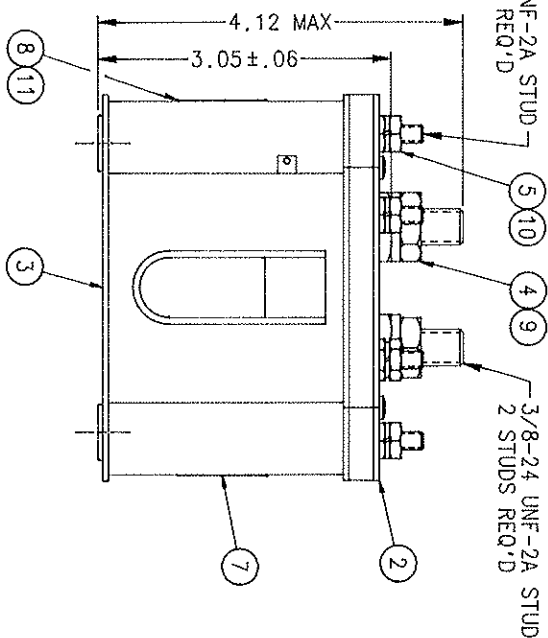
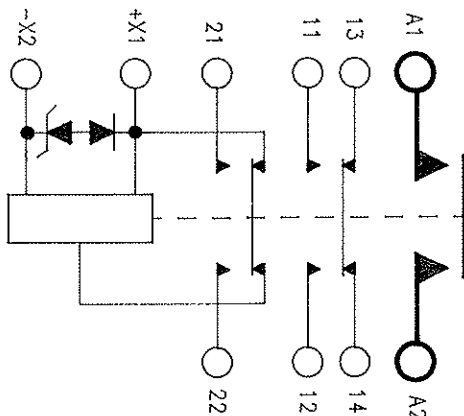
16 OHM
91 OHM
45V PEAK

-55°C TO +71°C MAX
50,000 CYCLES MIN.
100,000 CYCLES
2 LBS. 8 OZ.

NOTES:

- THIS UNIT MEETS THE MATERIAL AND WORKMANSHIP REQUIREMENTS OF MIL-R-6106.
- MOUNTING SURFACE SHALL PROVIDE ELECTRICAL GROUND.

CONFIGURATION CONTROLLED



FIND NO	QTY	PART OR IDENTIFYING NO	NOMENCLATURE OR DESCRIPTION	FSCA NO	DRAWING OR SPECIFICATION	MATERIAL OR NOTE
12	1	39529-001	OVERLAY - NAME PLATE			
11	1	39529-024	OVERLAY - FAA/PMA			
10	8	51810-054	WASHER-LOCK NO.10 X .337 X .047 SPLIT			AN935B10 BRONZE
9	2	51807-084	WASHER-LOCK 3/8 X .688 X .094 SPLIT			AN935B616 BRONZE
8	1	58400-011	PLATE - FAA/PMA			
7	1	17959-001	PLATE - WARNING			
6	4	51200-020	SCREW-NO. 4 X 1/4 SHEETMETAL			S. STEEL
5	8	50410-084	NUT-10-32 X 3/8 X 1/8 HEX.			AN345B10 BRASS
4	2	50407-164	NUT-3/8-24 X 5/8 X 7/32 HEX.			AN345B616 BRASS
3	1	33273-050	RELAY ASSEMBLY - PRI.			
2	1	32060-001	PLATE-BASE COVER			
1	1	16043-001	PLATE - NAME			

HARTMAN ELECTRICAL MANUFACTURING
MAANSFIELD, OHIO

UNLESS OTHERWISE SPECIFIED
DIMENSIONS ARE IN INCHES
TOLERANCES ON

2 PL DEC.3 PL DEC. ANGLES
*.06 *.010 *.1*

REF

BRITISH AERO SPACE

DR BY DLM 97/01/14
CHK BY RS 97/01/15
ENGR DM 97/01/16
MFG 97/01/16
RELEASE 97/01/16
CONTR NO.
GOVT APPVL

SIZE CODE IDENT DWG NO.
C 74063 A-703ZS
SCALE 1:2 SHEET

CONTACTOR SPST NO
400 AMP, 28 VOLTS

093

Mouser Electronics

Authorized Distributor

Click to View Pricing, Inventory, Delivery & Lifecycle Information:

[TE Connectivity:](#)

[A703ZS](#)