

## Electrical / Environmental

- Operating Temperature Range -40°C to +105°C
- Temperature Rise, Maximum 45°C

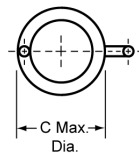
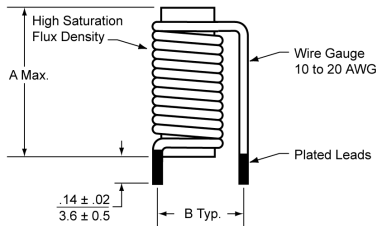


# HM11

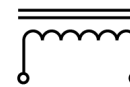
## Vertical Mount Inductors



### Outline Dimensions (Inch / mm) / Schematic



Schematic



### Specifications / Packaging

| Part Number  | Core Size | Wire Gauge AWG mm <sup>(1)</sup> | Inductance $\mu$ H @ 10 kHz $\pm$ 25% | DCR Max. m $\Omega$ | $I_{SAT}$ DC Amps Approx. | Max. Current DC Amps |              | Mechanical Outline Dimensions: Inches (mm) |            |            | Carton Box Quantity (Units) |
|--------------|-----------|----------------------------------|---------------------------------------|---------------------|---------------------------|----------------------|--------------|--|------------|------------|-----------------------------|
|              |           |                                  |                                       |                     |                           | at 35°C Rise         | at 45°C Rise | A  | B          | C          |                             |
| HM11-11001LF | 10 X 40   | 10 (2.59)                        | 4.46                                  | 2.0                 | 48                        | 23.5                 | 26.5         | 1.65 (42)                                  | .75 (19.0) | .63 (16.0) | 250                         |
| HM11-11302LF | 10 X 35   | 13 (1.83)                        | 7.20                                  | 4.5                 | 36                        | 13.0                 | 15.0         | 1.46 (37)                                  | .65 (16.5) | .57 (14.5) | 300                         |
| HM11-11503LF | 10 X 35   | 15 (1.45)                        | 11.00                                 | 8.1                 | 28                        | 10.5                 | 12.0         | 1.46 (37)                                  | .60 (15.2) | .54 (13.7) | 300                         |
| HM11-11804LF | 10 X 35   | 18 (1.02)                        | 21.00                                 | 21.4                | 20                        | 7.0                  | 8.0          | 1.46 (37)                                  | .55 (14.0) | .50 (12.8) | 300                         |
| HM11-12005LF | 10 X 35   | 20 (0.81)                        | 34.00                                 | 43.0                | 16                        | 5.5                  | 6.5          | 1.46 (37)                                  | .55 (14.0) | .49 (12.4) | 300                         |
| HM11-21001LF | 10 X 25   | 10 (2.59)                        | 1.40                                  | 1.2                 | 85                        | 25.0                 | 28.0         | 1.06 (27)                                  | .75 (19.0) | .63 (16.0) | 300                         |
| HM11-21302LF | 10 X 25   | 13 (1.83)                        | 3.30                                  | 3.4                 | 60                        | 14.0                 | 16.0         | 1.06 (27)                                  | .65 (16.5) | .57 (14.5) | 300                         |
| HM11-21503LF | 10 X 25   | 15 (1.45)                        | 5.00                                  | 5.8                 | 46                        | 11.5                 | 13.5         | 1.06 (27)                                  | .60 (15.2) | .54 (13.7) | 300                         |
| HM11-21804LF | 10 X 25   | 18 (1.02)                        | 9.30                                  | 15.0                | 30                        | 8.0                  | 9.0          | 1.06 (27)                                  | .55 (14.0) | .50 (12.8) | 300                         |
| HM11-22005LF | 10 X 25   | 20 (0.81)                        | 16.20                                 | 30.6                | 22                        | 5.0                  | 5.5          | 1.06 (27)                                  | .55 (14.0) | .49 (12.4) | 1000                        |
| HM11-31001LF | 8 X 25    | 10 (2.59)                        | 1.20                                  | 1.2                 | 72                        | 28.0                 | 31.0         | 1.06 (27)                                  | .65 (16.5) | .55 (14.0) | 300                         |
| HM11-31302LF | 8 X 25    | 13 (1.83)                        | 2.70                                  | 2.7                 | 45                        | 14.5                 | 17.0         | 1.06 (27)                                  | .55 (14.0) | .49 (12.5) | 400                         |
| HM11-31503LF | 8 X 25    | 15 (1.45)                        | 4.20                                  | 4.9                 | 35                        | 11.5                 | 13.5         | 1.06 (27)                                  | .55 (14.0) | .46 (11.7) | 1000                        |
| HM11-31804LF | 8 X 25    | 18 (1.02)                        | 7.20                                  | 11.6                | 26                        | 8.0                  | 9.0          | 1.06 (27)                                  | .50 (12.7) | .43 (10.8) | 1000                        |
| HM11-32005LF | 8 X 25    | 20 (0.81)                        | 12.00                                 | 22.8                | 22                        | 5.5                  | 6.5          | 1.06 (27)                                  | .45 (11.4) | .41 (10.4) | 1000                        |
| HM11-41301LF | 6 X 16    | 13 (1.83)                        | 0.66                                  | 1.4                 | 65                        | 13.0                 | 15.0         | .71 (18)                                   | .50 (12.7) | .41 (10.5) | 660                         |
| HM11-41502LF | 6 X 16    | 15 (1.45)                        | 1.00                                  | 2.3                 | 50                        | 10.0                 | 12.0         | .71 (18)                                   | .45 (11.4) | .38 (9.7)  | 660                         |
| HM11-41803LF | 6 X 16    | 18 (1.02)                        | 2.20                                  | 6.1                 | 32                        | 8.0                  | 9.0          | .71 (18)                                   | .40 (10.2) | .35 (8.8)  | 660                         |
| HM11-42004LF | 6 X 16    | 20 (.081)                        | 3.30                                  | 10.87               | 23                        | 7.5                  | 8.5          | .71 (18)                                   | .40 (10.2) | .33 (8.4)  | 660                         |
| HM11-51301LF | 5 X 25    | 13 (1.83)                        | 2.00                                  | 1.9                 | 25                        | 17.0                 | 19.5         | 1.06 (27)                                  | .45 (11.4) | .37 (9.5)  | 1000                        |
| HM11-51502LF | 5 X 25    | 15 (1.45)                        | 2.60                                  | 3.2                 | 20                        | 14.5                 | 16.5         | 1.06 (27)                                  | .45 (11.4) | .34 (8.7)  | 1000                        |
| HM11-51803LF | 5 X 25    | 18 (1.02)                        | 5.50                                  | 8.4                 | 14                        | 9.0                  | 10.0         | 1.06 (27)                                  | .35 (8.9)  | .31 (7.8)  | 1000                        |
| HM11-52004LF | 5 X 25    | 20 (0.81)                        | 8.80                                  | 16.5                | 10                        | 6.5                  | 7.0          | 1.06 (27)                                  | .35 (8.9)  | .29 (7.4)  | 1000                        |
| HM11-61301LF | 4 X 16    | 13 (1.83)                        | 0.37                                  | 0.9                 | 53                        | 18.0                 | 20.0         | .71 (18)                                   | .40 (10.2) | .33 (8.5)  | 450                         |
| HM11-61502LF | 4 X 16    | 15 (1.45)                        | 0.68                                  | 1.7                 | 38                        | 15.5                 | 17.5         | .71 (18)                                   | .40 (10.2) | .30 (7.7)  | 450                         |
| HM11-61803LF | 4 X 16    | 18 (1.02)                        | 1.15                                  | 3.7                 | 28                        | 10.5                 | 12.0         | .71 (18)                                   | .35 (8.9)  | .27 (6.8)  | 450                         |
| HM11-62004LF | 4 X 16    | 20 (0.81)                        | 1.80                                  | 6.9                 | 20                        | 8.5                  | 9.5          | .71 (18)                                   | .30 (7.6)  | .25 (6.4)  | 450                         |
| HM11-71001LF | 9 X 9     | 13.5 (1.72)                      | 0.19 $\pm$ 15%                        | 0.76                | -                         | 33.0                 | 37.0         | .37 (9.5)                                  | .52 (13.2) | .51 (13)   | 500                         |

Notes: (1) Nominal bare wire diameter.  
(2) Electrical specifications at 25°C.

# Mouser Electronics

Authorized Distributor

Click to View Pricing, Inventory, Delivery & Lifecycle Information:

## TT Electronics:

[HM11-52004LF](#) [HM11-41301LF](#) [HM11-11001LF](#) [HM11-41502LF](#) [HM11-42004LF](#) [HM11-11503LF](#) [HM11-51803LF](#)  
[HM11-71001LF](#) [HM11-51502LF](#) [HM11-41803LF](#) [HM11-21001LF](#) [HM11-11804LF](#) [HM11-21503LF](#) [HM11-61502LF](#)  
[HM11-31001LF](#) [HM11-61803LF](#) [HM11-62004LF](#) [HM11-12005LF](#) [HM11-21804LF](#) [HM11-21302LF](#) [HM11-31302LF](#)