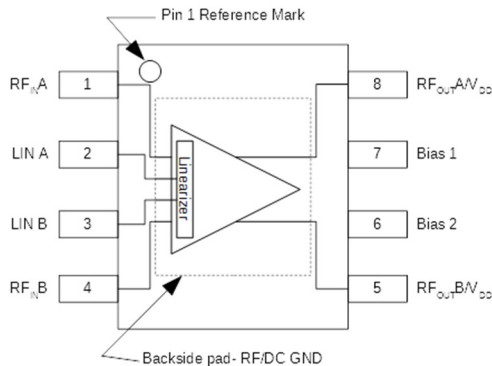


### Product Description

The TAT7467E1F is a 75  $\Omega$ , fully integrated, single-die differential RF Amplifier covering medium power applications in the CATV band. The TAT7467E1F includes on-chip linearization to improve 3<sup>rd</sup> order distortion performance while maintaining low power consumption on a +5 V supply. It is fabricated using 6 inch GaAs pHEMT technology to optimize performance and cost.

### Functional Block Diagram



### Pin Configuration

Pin No.	Label
1	RF <sub>IN</sub> A
2	LIN A
3	LIN B
4	RF <sub>IN</sub> B
5	RF <sub>OUT</sub> B / V <sub>DD</sub>
6	Bias 2
7	Bias 1
8	RF <sub>OUT</sub> A / V <sub>DD</sub>
Backside Pad	RF/DC GND



SOIC-8 Package

### Product Features

- 50–1218 MHz Bandwidth
- 75  $\Omega$  Impedance
- pHEMT Device Technology
- Meets DOCSIS 3.1 Output Requirements
- +5 V Supply Voltage
- 380 mA Current Consumption
- On-chip Linearization
- SOIC-8 package

### Applications

- Replacement for +5 V SOIC-8 Amplifiers
- Edge QAM Output Stage
- MDU Output
- Distribution Amplifiers
- Transmitter Driver Amplifier

### Ordering Information

Part No.	Description
TAT7467E1F	75 $\Omega$ Dual pHEMT Amplifier
TAT7467E1F-EB	Amplifier Evaluation Board

Standard T/R size = 1000 pieces on a 7" reel

### Absolute Maximum Ratings

Parameter	Rating
Supply Voltage ( $V_{DD}$ )	+10 V
Storage Temperature	-60 to +150 °C
Operating Temperature	-40 to +85 °C

Operation of this device outside the parameter ranges given above may cause permanent damage.

### Recommended Operating Conditions

Parameter	Min	Typ	Max	Units
$V_{DD}$		+5.0		V
$I_{DD}$ (Total EVB current)		380		mA
$T_j$ for $>10^6$ hours MTTF			+145	°C

Electrical performance is measured under conditions noted in the electrical specifications table. Specifications are not guaranteed over all recommended operating conditions.

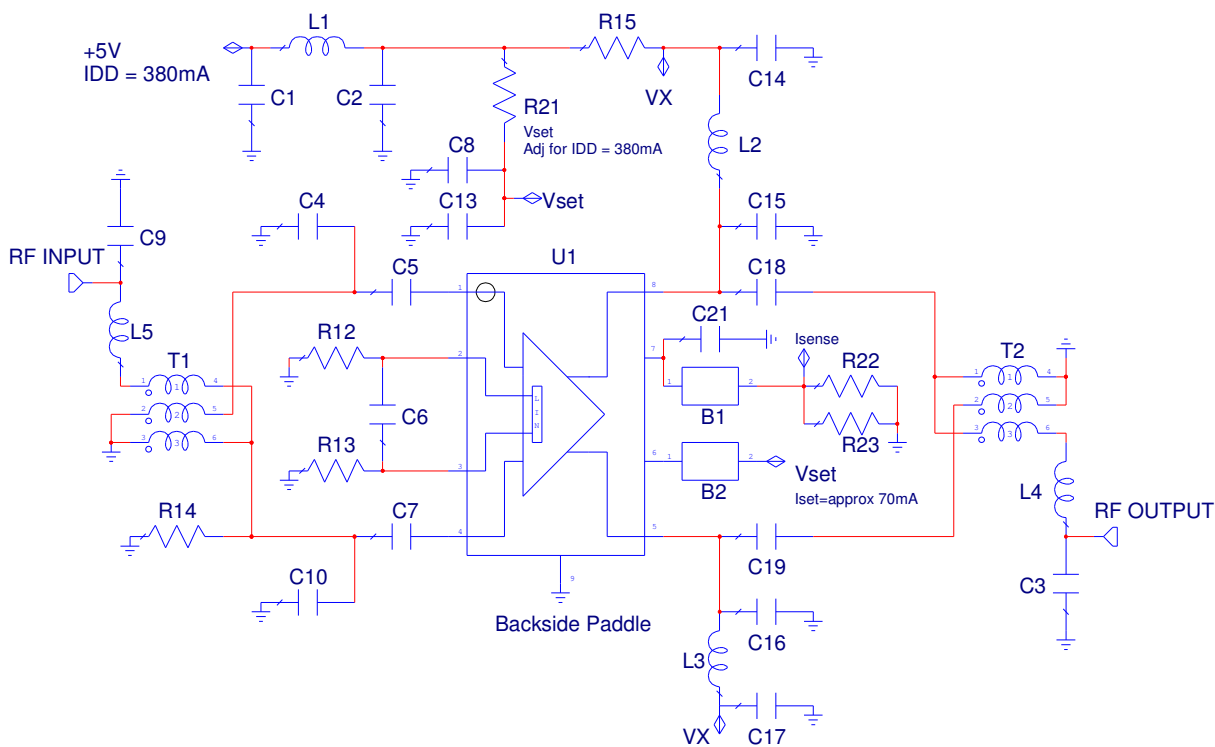
### Electrical Specifications

Parameter	Conditions	Min	Typ	Max	Units
Operational Frequency Range		50		1218	MHz
Gain			18		dB
Gain Flatness	Peak deviation from straight line across full band.		$\pm 0.75$		dB
Noise Figure			4.7		dB
Input Return Loss			15		dB
Output Return Loss			16		dB
EQAM Output Out-of-band Spurious and Noise for single channel on a single port	$V_{OUT} = 62$ dBmV / ch adjacent, See Notes 2, 3, and 4			-62	dBc
P1dB			+25		dBm
OIP3	$P_{OUT} = +12$ dBm / tone, $\Delta f = 10$ MHz		+43		dBm
Equivalent Harmonics	See Note 5			-63	dBc
$V_{DD}$			+5		V
$I_{DD}$ (Total current of Test Circuit)	See Note 7		380		mA
Bias 2 ( $V_{set}$ range to adjust $I_{DD}$ )		4		5	V
Thermal Resistance $\theta_{jc}$ (jct. to case)			14.5		°C/W

#### Notes:

1. Test conditions unless otherwise noted: 75  $\Omega$  impedance,  $V_{DD} = +5$  V,  $I_{DD} = 380$  mA fixed by  $V_{set}$  <sup>7</sup> from +4 V to +4.7 V,  $T_A = +25$  °C
2. Production tested at 66 MHz, 330 MHz, and 990 MHz.
3. Adjacent channel 1 (750 kHz from channel block edge to 6 MHz from channel block edge).
4. Adjacent channel 2 (6 MHz from channel block edge to 12 MHz from channel block edge).
5. Spurious and noise levels in channels coinciding with 2<sup>nd</sup> harmonic or 3<sup>rd</sup> harmonic.
6. Recommended application circuit uses active bias described on page 6.
7. Test Circuit, page 3, can be used for evaluation with some variation in  $I_{DD}$  when  $V_{set}$  is a fixed voltage between +4 to +4.7 V adjusted by R21. Variation to  $I_{DD}$  may change some performance parameters.

**TAT7467E1F-EB Evaluation Board (Test Circuit)**





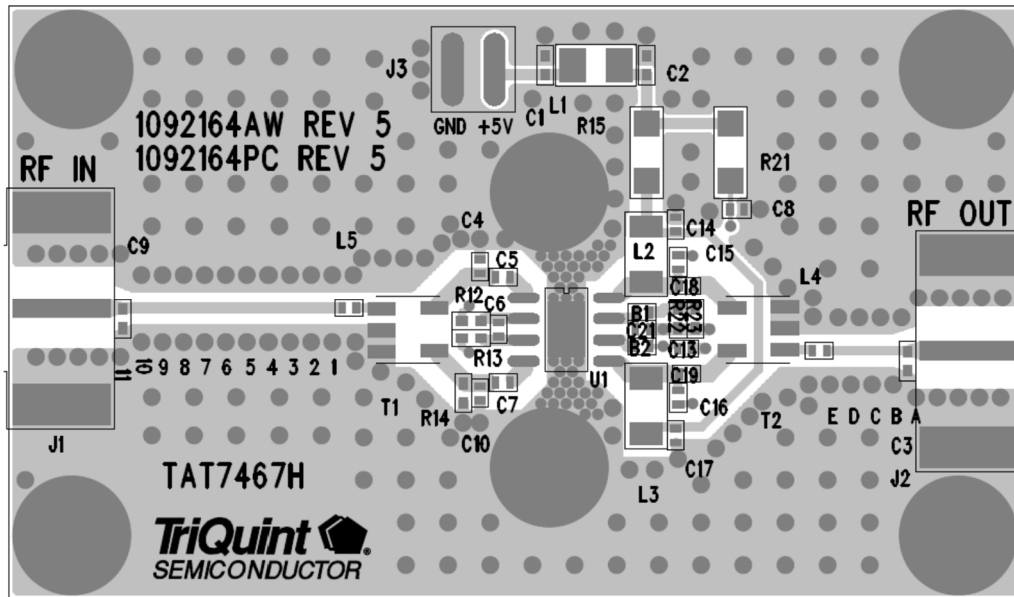
# TAT7467E1F

## CATV 75 $\Omega$ pHEMT Dual RF Amplifier

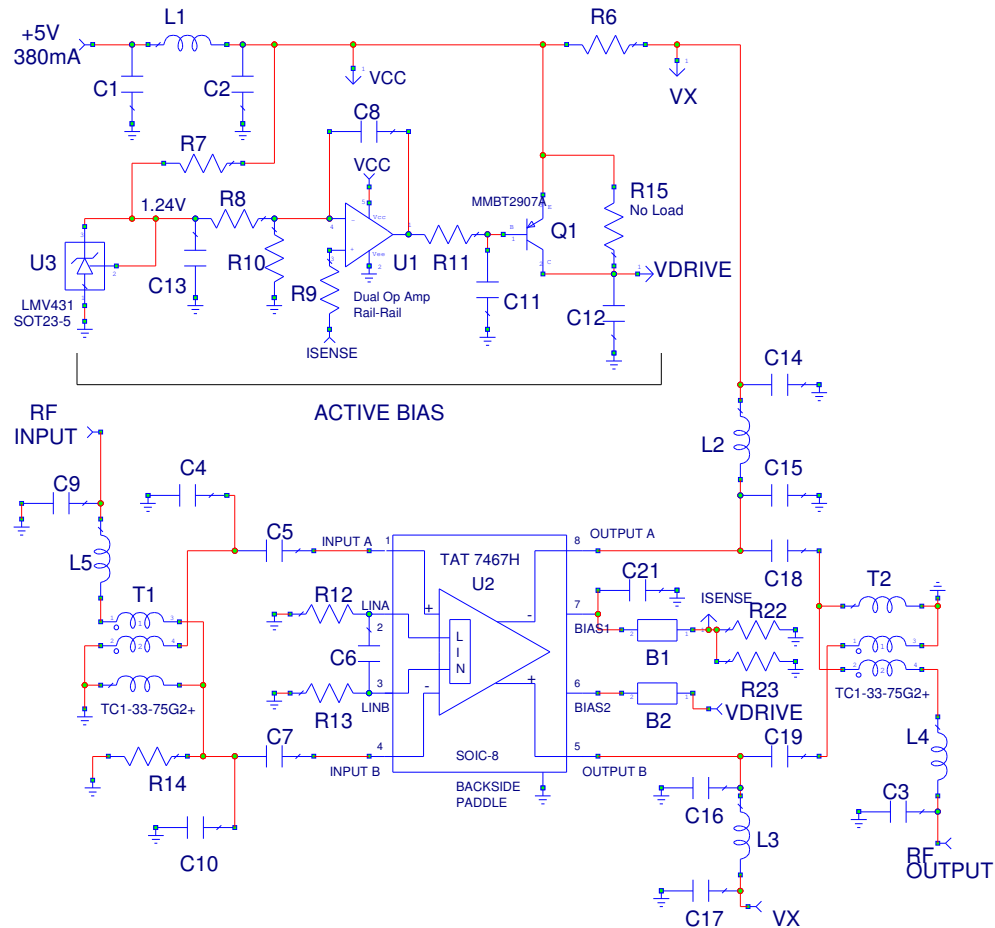
### Bill of Material–TAT7467E1F

Reference Designator	Description	Manufacturer	Part Number
PAD	Sil Pad for Heatsink	various	
BLOCK	HEATSINK		
U1	TAT7467E1F	Qorvo	
PCB	TAT7467E1F Application Board		
C1, C2	CAP, 0402, 0.1uF, 10%, 10V	Panasonic Corp of North America	ECJ-0EB1A104K
C18, C19	CAP, 0402, 270 pF, 10%, 50V	Panasonic Corp of North America	ECJ-0EB1H271K
C5, C6, C7, C13, C14, C17	CAP, 0402, 0.01uF, 10%, 16V, XR7	Panasonic Corp of North America	ECJ-0EB1C103K
C3, C4, C10, C15, C16	CAP, 0402, 0.5pF +/-0.25pF, 50V	Murata	GRM1555C1HR50GZ01D
R12, R13	RES, 0402, 1.21K $\Omega$ , 1%, 1/16W	Panasonic Corp of North America	ERJ-2RKF1211X
R22, R23	RES, 0402, 1.5 $\Omega$ , 1%, 1/16W	Yaego	RC0402FR-071R5L
R14	RES, 0402, 750 $\Omega$ , 1%, 1/16W	VISHAY-DALE	CRCW0402750RFBKED
R15	RES, 1206, 1 $\Omega$ , 5%	Panasonic Corp of North America	ERJ-8GEYJ1R0V
R21	RES, 1206, 12 $\Omega$ , 5%, 1/4W	Panasonic Corp of North America	ERJ-8GEYJ120V
L4	IND, 0402, 5.6nH, 5%, W/W	Coilcraft, Inc.	0402CS-5N6XJLW
L5	IND, 0402, 2.7nH, 5%, W/W	Coilcraft, Inc.	0402CS-2N7XJLW
L1	IND, 1008, 0.9uH, 10%, 1.3A, Ferrite	Coilcraft, Inc.	1008AF-901XKL
L2, L3	IND, 1206, 500nH, 10%, 260mA, Ferrite	Murata	LQH31HNR50K03
B1, B2	Bead, Chip Ferrite, 0402, 600 $\Omega$ , 300mA	Murata	BLM15AG601SN1D
T1, T2	XFMR, SMT, 75 $\Omega$ , CD542, 1:1	Mini-Circuits	TC1-33-75G2+
J3	Header Pin, 2 POS, 0.1", RA, SMT	Molex	022-28-8021
J1, J2	Conn, 75 $\Omega$ , Edge Launch F	Lighthouse Technologies	LTI-FSF55MGT-P-10A-X7
S1, S2, S3, S4, S5, S6	Screw, 4-40, 1/4", Phillips, Pan HD, SEMS	McMaster-Carr Supply Company	90403A106
C8, C9, C21	Not Populated Item		Dummy Part

**TAT7467E1F-EB Evaluation Board**



### Application Circuit with Active Bias

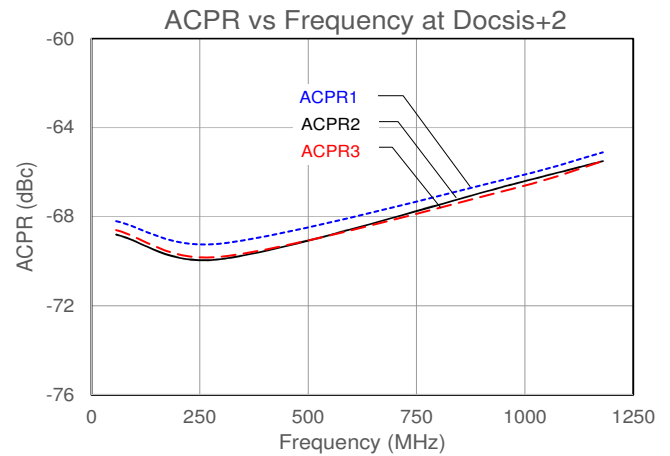
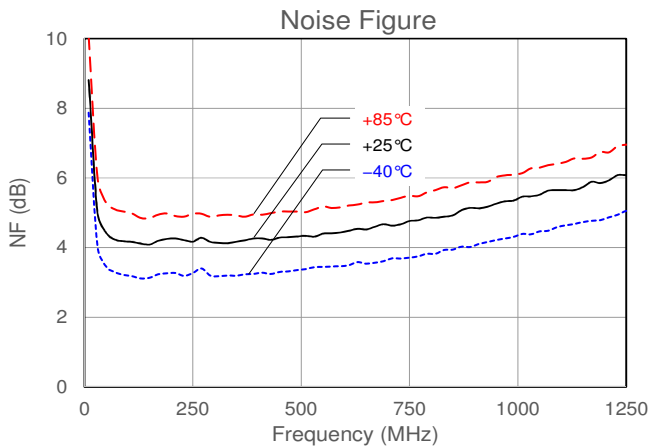
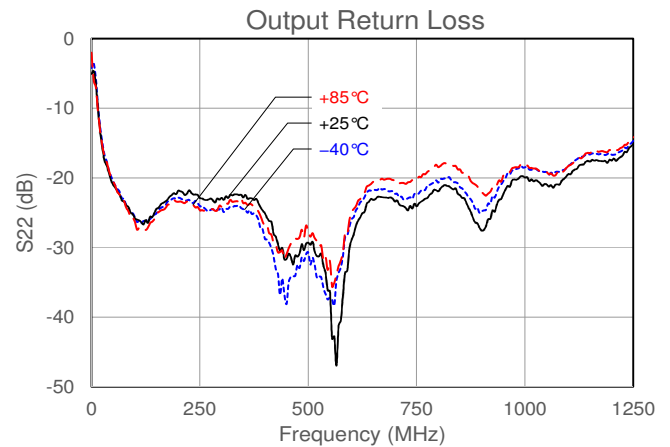
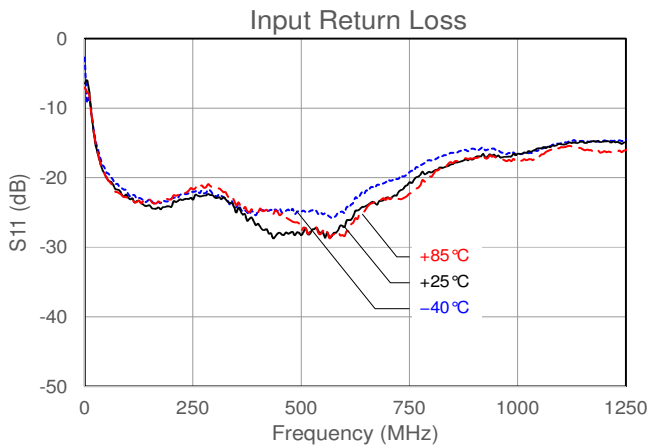
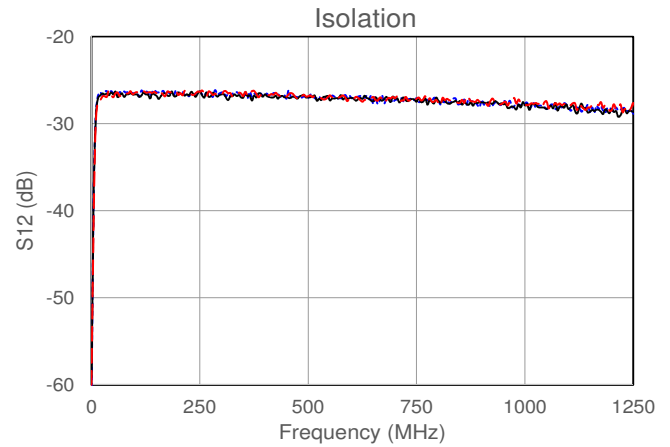
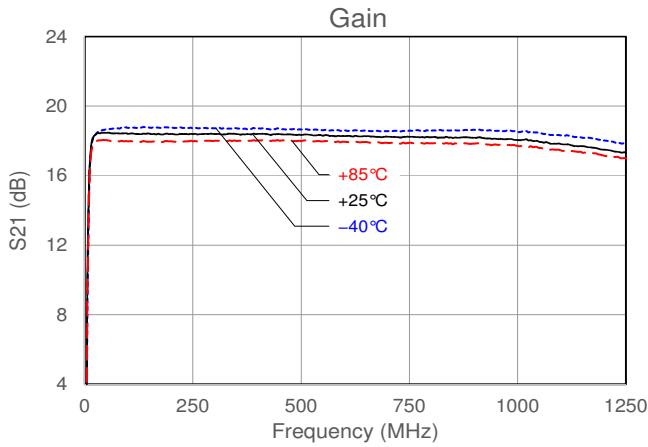


- Notes:
1. EVB Nominal  $I_{DD}$  current is 380 mA

### Bill of Material: Active Bias Section

Reference Designator	Description	Manufacturer	Part Number
U1	Rail-Rail Op-Amp	On Semi	LM7301
U3	Adjustable shunt voltage regulator	TI	LM431
Q1	General purpose transistor (pnp)	Various	
C1, C2, C8	CAP, 0402, 0.1uF, 16V, 10%	Various	
C11, C12, C13, C14, C15	CAP, 0402, 10.01uF, 6V, 10%	Various	
R6	RES, thick film, 1206, 1 $\Omega$ , 5%	Various	
R7, R8, R9	RES, thick film, 0402, 10.0k $\Omega$ , 1/16 W, 1%	Various	
R10	RES, thick film, 0402, 5.6k $\Omega$ , 1/16 W, 1%	Various	
R11	RES, thick film, 0402, 100 $\Omega$ , 5%	Various	
R15	No Load		
L1	IND, High Current, 1008, 0.9uH, 10%	Coilcraft	1008AF-901XKL

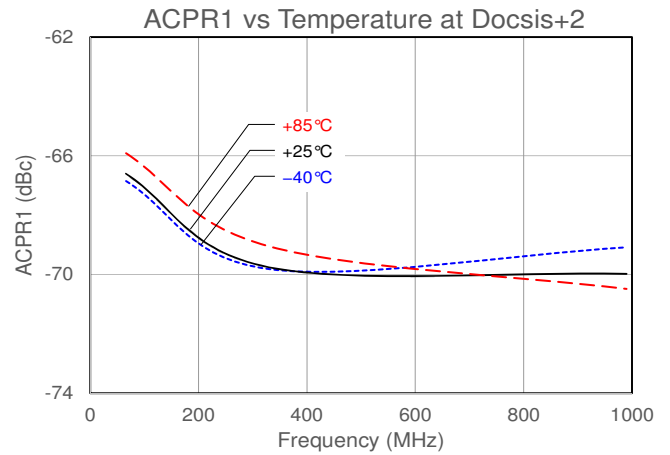
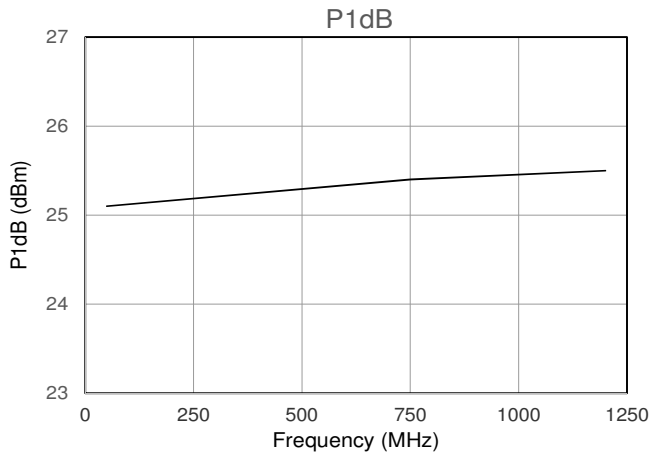
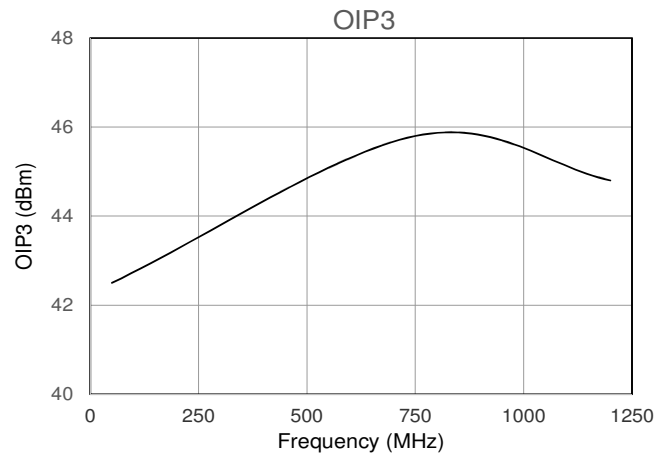
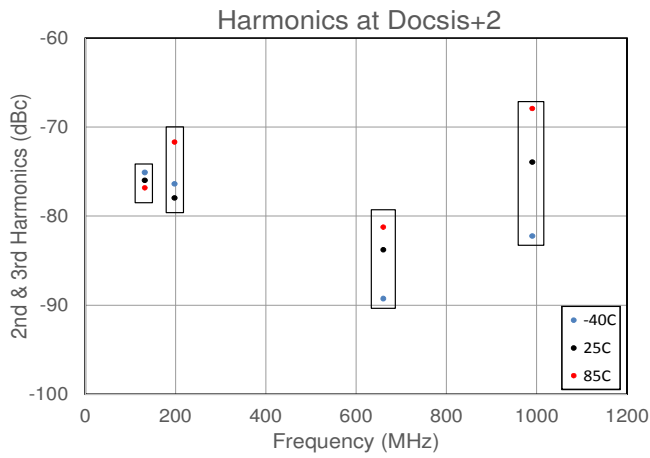
## Performance Plots



### Notes:

1.  $V_{DD} = +5V$ ,  $I_{DD} = 380mA$ ,  $T_A = +25^\circ C$

### Typical Performance Plots (cont.)

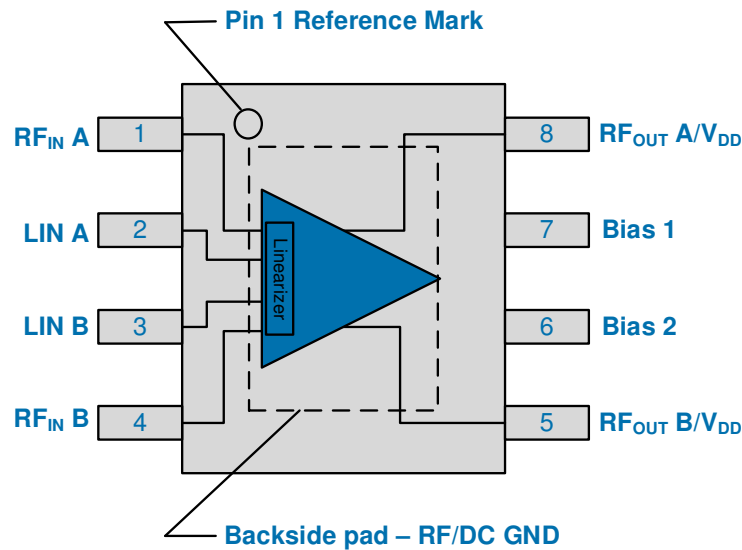


#### Notes:

1.  $V_{DD} = +5V$ ,  $I_{DD} = 380mA$ ,  $T_A = +25^\circ C$



### Pin Configuration and Description



Pin No.	Label	Description
1	RF <sub>IN</sub> A	RF Input A. DC blocking capacitor required.
2	LIN A	Linearizer A. Recommend using 1.21K resistors to ground for optimal on-chip linearizer current setting.
3	LIN B	Linearizer B. Recommend using 1.21K resistors to ground for optimal on-chip linearizer current setting.
4	RF <sub>IN</sub> B	RF Input B. DC blocking capacitor required.
5	RF <sub>OUT</sub> B / V <sub>DD</sub>	RF Output B. DC blocking capacitor required.
6	Bias 2	I <sub>DD</sub> adjust. Set for 380mA, approx. Pin 6 draws approx. 70mA
7	Bias 1	Output stage common source node. Current sense line for active bias.
8	RF <sub>OUT</sub> A / V <sub>DD</sub>	RF Output A. DC blocking capacitor required.
Backside Pad	RF/DC GND	Ground Slug



# TAT7467E1F

## CATV 75 $\Omega$ pHEMT Dual RF Amplifier

### Detailed Device Description

---

The TAT7467E1F is a flexible +5V differential amplifier for medium power CATV applications. The amplifier of the TAT7467E1F was specifically designed to work with on-chip linearization to provide 3<sup>rd</sup> order distortion improvement over a wide range of RF power levels and across the full CATV bandwidth. Operation of the linearizer will not affect overall gain by more than 0.7 dB.

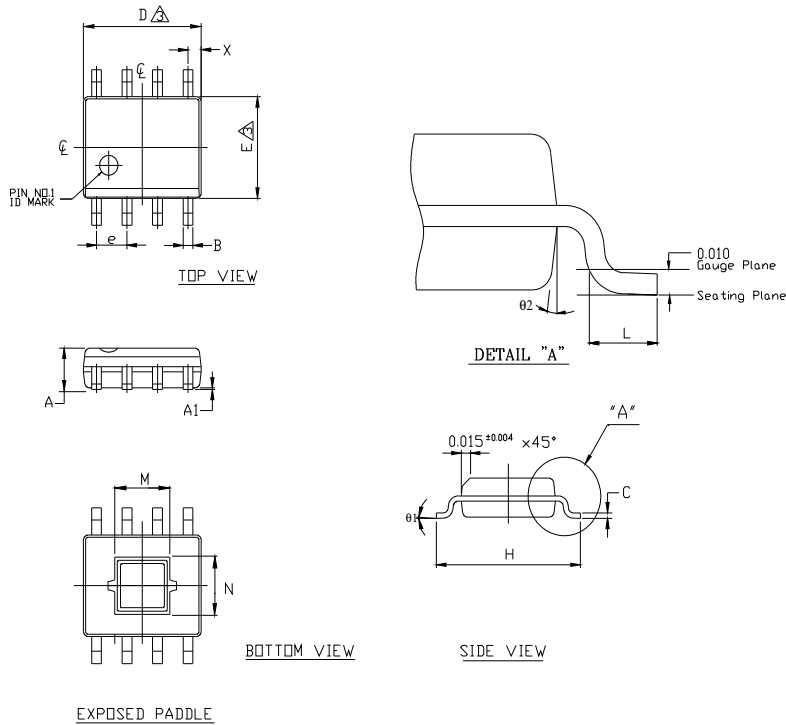
For any amplifier bias current, output 3<sup>rd</sup> order distortion may be improved by adjusting a small bias current of the on-chip linearization circuit. The Application Schematic shows resistors setting the linearizer currents. Alternate linearizer drive circuitry is possible; consult Qorvo for discussion.

Bias current may be adjusted with changes to external components making the TAT7467E1F ideal for both input and output gain stages in an EdgeQAM amplifier line-up. For output stage applications, bias currents of between 300 mA to 400 mA are recommended. For input stage applications, bias currents of 230 mA to 280 mA are recommended. Active bias circuits, like the one shown on page 6 of this datasheet, may be used to achieve greater control over the bias current.

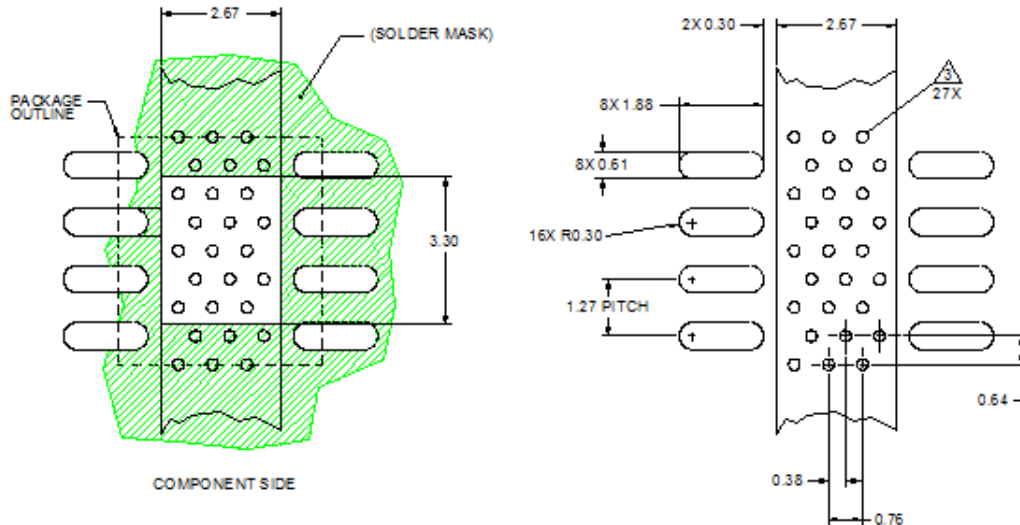
The TAT7467E1F is built using a single die, which significantly improves its resulting circuit balance and corresponding 2<sup>nd</sup> order distortion performance. For best 2<sup>nd</sup> order performance, an input balun using a 3<sup>rd</sup> wire construction may be used to improve the input phase balance going into the TAT7467E1F.

The TAT7467E1F is packaged in an industry standard SOIC-8 package with a large exposed paddle to enable good heat flow to a backside heatsink. At the maximum recommended bias current of 400 mA the power consumption will be 2 W. The TAT7467E1F is fabricated using a mature pHEMT process that has demonstrated outstanding reliability performance on other Qorvo products. Please use contact information section to consult Qorvo for further information.

## Package Marking and Dimensions



## PCB Mounting Pattern



### Notes:

1. All dimensions are in millimeters. Angles are in degrees.
2. Use 1 oz. copper minimum for top and bottom layer metal.
3. Vias are required under the backside paddle of this device for proper RF/DC grounding and thermal dissipation.
4. We recommend a 0.35mm (#80/.0135") diameter bit for drilling via holes and a final plated thru diameter of 0.25 mm (0.010").
5. Ensure good package backside paddle solder attach for reliable operation and best electrical performance.



# TAT7467E1F

## CATV 75 $\Omega$ pHEMT Dual RF Amplifier

### Handling Precautions

Parameter	Rating	Standard
ESD – Human Body Model (HBM)	Class 1B	ESDA/JEDEC JS-001-2012
ESD – Charged Device Model (HBM)	Class C3	JEDEC JESD22-C101F
MSL – Moisture Sensitivity Level	Level 3	IPC/JEDEC J-STD-020



Caution!  
ESD-Sensitive Device

### Solderability

Compatible with both lead-free (260 °C maximum reflow temperature) and tin/lead (245 °C maximum reflow temperature) soldering processes.

Contact plating: Ni, Pd, & Au

### RoHS Compliance

This part is compliant with EU 2002/95/EC RoHS directive (Restrictions on the Use of Certain Hazardous Substances in Electrical and Electronic Equipment).

- Lead Free
- Halogen Free (Chlorine, Bromine)
- Antimony Free
- TBBP-A (C<sub>15</sub>H<sub>12</sub>Br<sub>4</sub>O<sub>2</sub>) Free
- PFOS Free
- SVHC Free

### Contact Information

For the latest specifications, additional product information, worldwide sales and distribution locations:

Tel: 1-844-890-8163

Web: [www.qorvo.com](http://www.qorvo.com)

Email: [customer.support@qorvo.com](mailto:customer.support@qorvo.com)

### Important Notice

The information contained herein is believed to be reliable; however, Qorvo makes no warranties regarding the information contained herein and assumes no responsibility or liability whatsoever for the use of the information contained herein. All information contained herein is subject to change without notice. Customers should obtain and verify the latest relevant information before placing orders for Qorvo products. The information contained herein or any use of such information does not grant, explicitly or implicitly, to any party any patent rights, licenses, or any other intellectual property rights, whether with regard to such information itself or anything described by such information. **THIS INFORMATION DOES NOT CONSTITUTE A WARRANTY WITH RESPECT TO THE PRODUCTS DESCRIBED HEREIN, AND QORVO HEREBY DISCLAIMS ANY AND ALL WARRANTIES WITH RESPECT TO SUCH PRODUCTS WHETHER EXPRESS OR IMPLIED BY LAW, COURSE OF DEALING, COURSE OF PERFORMANCE, USAGE OF TRADE OR OTHERWISE, INCLUDING THE IMPLIED WARRANTIES OF MERCHANTABILITY AND FITNESS FOR A PARTICULAR PURPOSE.**

Without limiting the generality of the foregoing, Qorvo products are not warranted or authorized for use as critical components in medical, life-saving, or life-sustaining applications, or other applications where a failure would reasonably be expected to cause severe personal injury or death.

Copyright 2017 © Qorvo, Inc. | Qorvo is a registered trademark of Qorvo, Inc.

## Revision History

Rev.	Date	ECN# (Hillsboro Only)	Description of Change	WEBMASTER POSTING INSTRUCTIONS TO PUBLIC WEBSITE		
				Email* Info Link Only	1 <sup>st</sup> page only	Full Data Sheet
				Answer YES in one column only OR NO** all 3 columns		
A	12-11-14	90048	Original Documentation (A.Sardar)	No	No	Yes
B	02-02-15	90832	Added active bias circuit and associated BOM, added Pin Configuration section, updated functional block diagram. (A. Sardar, C. Blum)	No	No	Yes
C	02-23-15	91275	Declare test condition to I <sub>DD</sub> =380mA for Electrical specs, limit Vset control range from 4 to 6V for I <sub>DD</sub> to a 4 to 4.7V (5V max) to be compatible with 5V active bias application circuit, referenced test circuit on page 3 to Electrical specs. Added test conditions to all performance plots, declared them as typical. Updated package marking & dimensions per OUT.308, added PCB mounting pattern (T. Cummings)	No	No	Yes
D	10-08-15	96531	Updated data sheet to dual branding. Update package dimensions and marking. Corrected pin description table. Pin 1 mislabeled. Added C21 to EVB BOM. Corrected Functional Block Diagram. Pin 1 mislabeled. Corrected typos.	No	No	Yes
E	06-05-17	17-16773	Updated to Qorvo format. Updated EVB BOM. (D.Fun)	No	No	Yes
<div>CONTROLLED DISTRIBUTION: 03</div> <div>(Hillsboro Only)</div>						

# Mouser Electronics

Authorized Distributor

Click to View Pricing, Inventory, Delivery & Lifecycle Information:

Qorvo:

[TAT7467E1F](#) [TAT7467E1F-EB](#)