



# RFPA5562

## Wi-Fi Power Amplifier

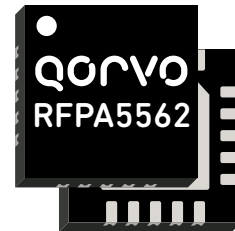
### Product Overview

The Qorvo® RFPA5562 is a three-stage power amplifier (PA) designed for Wi-Fi 802.11a/n/ac/ax systems. The compact form factor and integrated matching minimizes layout area in the application and greatly reduces the number of external components.

Performance is focused on optimizing the PA for a 5V supply voltage that conserves power consumption while maintaining the highest linear output power and leading edge throughput.

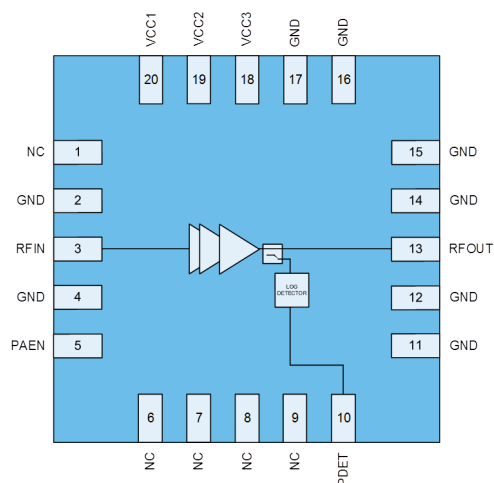
A key feature is the integration of a DC power detector with logarithmic feedback across power which enables power control to lower powers and enables the possibility to calibrate against a constant slope for applications which use higher gain antennas or end users wanting to reduce device calibration time in production.

The RFPA5562 integrates a 5GHz power amplifier (PA), regulator and power detector into a single device.



20 Pin 4x4 mm QFN Package

### Functional Block Diagram



Top View

### Key Features

- 4900 – 5925 MHz
- $P_{OUT} = +18\text{dBm}$  MCS11 HE80 -43dB Dynamic EVM
- $P_{OUT} = +23\text{dBm}$  MCS9 VHT80 -35dB Dynamic EVM
- $P_{OUT} = +25\text{dBm}$  MCS7 HT20/40 -30dB Dynamic EVM
- $P_{OUT} = +27\text{dBm}$  MCS0 HT20 Spectral Mask Compliance
- Optimized for +5 V Operation
- 33 dB Tx Gain
- Integrated DC Power Detector
- Input and Output Matched to 50 $\Omega$

### Applications

- Access Points
- Wireless Routers
- Residential Gateways
- Customer Premise Equipment
- Internet of Things

### Ordering Information

Part Number	Description
RFPA5562SB	Sample bag with 5 pieces
RFPA5562SQ	Sample bag with 25 pieces
RFPA5562SR	7" reel with 100 pieces
RFPA5562TR13	13" reel with 2,500 pieces
RFPA5562PCK-410	Assembled Evaluation Board

## Absolute Maximum Ratings

Parameter	Conditions	Rating
DC Supply Voltage		-0.5 to +6 V
Control Voltage	PAEN	-0.5 to +6 V
Storage Temperature		-40 to 150 °C
Junction Temperature	MTTF > 1.5x10 <sup>6</sup> hours	160 °C
	MTTF > 1.0x10 <sup>6</sup> hours	170 °C
RF Input Power at RFIN	Into 50 Ω Load for 802.11a/n/ac/ax (No Damage) *R1=0Ω	+10 dBm
	Into 10:1 VSWR Load for 802.11a/n/ac/ax (No Damage) *R1=15Ω	+15 dBm

Exceeding any one or a combination of the Absolute Maximum Rating conditions may cause permanent damage to the device. Extended application of Absolute Maximum Rating conditions to the device may reduce device reliability. This is an InGaP device designed for high duty cycle applications with T<sub>j</sub>>30 °C over ambient.

For R1 placement, refer to Evaluation Board Schematic

## Recommended Operating Conditions

Parameter	Min.	Typ.	Max.	Units
Operating Frequency	5180		5925	MHz
Extended Operating Frequency	4900		5925	MHz
Device Voltage (V <sub>CC</sub> )	+4.75	+5	+5.25	V
Control Voltage – High	+1.7	+3	+3.3	V
Control Voltage – Low	0		+0.5	V
T <sub>OPERATING</sub> *	-40		+85	°C

Electrical specifications are measured at specified test conditions. Specifications are not guaranteed over all recommended operating conditions. \* T<sub>OPERATING</sub> is temperature at package ground.

## Electrical Specifications

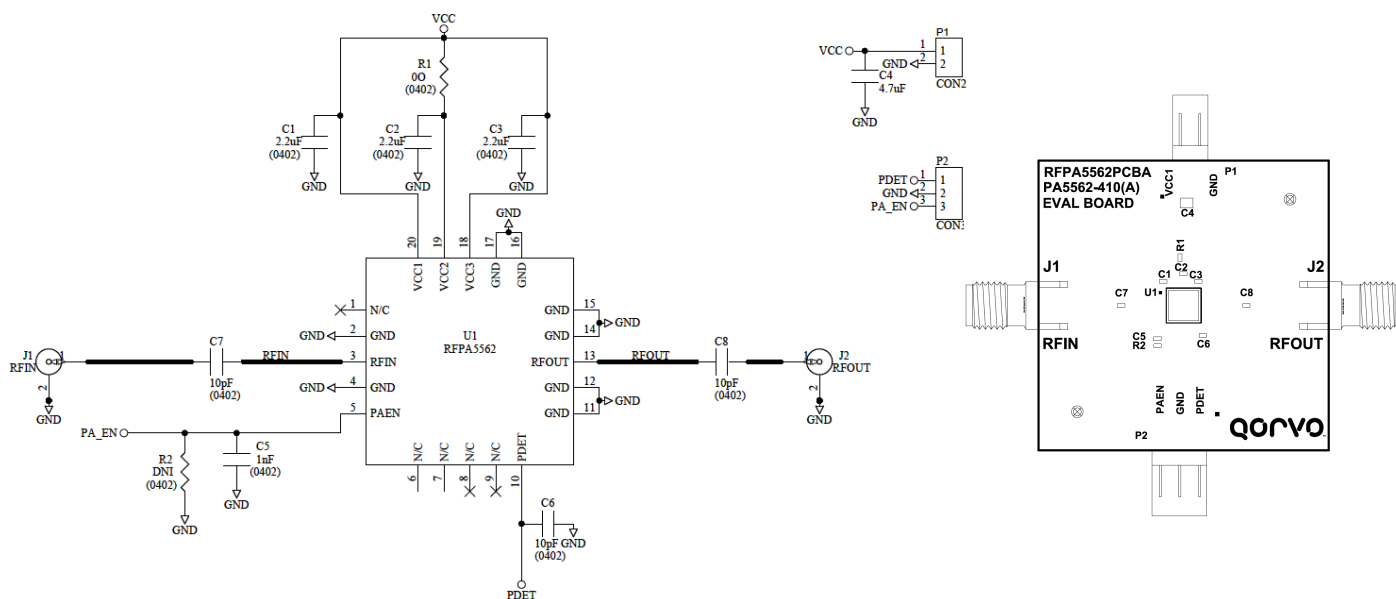
Parameter	Conditions	Min.	Typ.	Max.	Units
<b>Transmit (RFIN-RFOUT) Mode</b>	<b>Unless otherwise noted: V<sub>CC</sub>=5V, T=+25°C, PA_EN=High</b>				
11ax HE80 Output Power	MCS11 1024QAM		17		dBm
Dynamic EVM				-43	dB
11ac VHT80 Output Power	MCS9 1024QAM		21		dBm
				-40	dB
11ac VHT160 Output Power	MCS9 256QAM		22		dBm
				-35	dB
11ac VHT80 Output Power	MCS9 256QAM	22	23		dBm
Dynamic EVM				-35	dB
11n HT20/40 Output Power	MCS7 64QAM	23.5	25		dBm
Dynamic EVM				-30	dB
Margin to VHT160 Spectral Mask	P <sub>OUT</sub> = +23 dBm, 11n MCS0		5	0	dBc
Margin to VHT80 Spectral Mask	P <sub>OUT</sub> = +25 dBm, 11n MCS0		5	0	dBc
Margin to HT20 Spectral Mask	P <sub>OUT</sub> = +27 dBm, 11n MCS0		5	0	dBc
Gain		31	33		dB

Parameter	Conditions	Min.	Typ.	Max.	Units
Gain Variation	T= -40 to +85 °C	-2.5		+2.5	dB
Out of Band Gain	f = 3300-3800MHz		-15	-5	dB
	f > 7000MHz			12	dB
RFIN Port Return Loss			12		dB
RFOUT Port Return Loss			9		dB
Quiescent Current	RF Off		150	165	mA
Operating Current	P <sub>OUT</sub> = +17 dBm		200	225	mA
	P <sub>OUT</sub> = +23 dBm		295	320	mA
	P <sub>OUT</sub> = +27 dBm		415	450	mA
2 <sup>nd</sup> Harmonics	P <sub>OUT</sub> = +27 dBm 802.11a 6 MBps		-40	-35	dBm/MHz
3 <sup>rd</sup> Harmonics	P <sub>OUT</sub> = +27 dBm 802.11a 6 MBps		-40	-35	dBm/MHz
DC Power Detect Voltage	RF Off		0.25		V
	P <sub>OUT</sub> = 0 dBm		0.28		V
	P <sub>OUT</sub> = +27 dBm		0.81		V
DC Power Detector Slope	P <sub>OUT</sub> = 0 to +27 dBm		22		mV/dB
<b>GENERAL SPECIFICATIONS</b>	<b>Unless otherwise noted: V<sub>CC</sub>=5V, T=+25°C,</b>				
Control Current - High			1	5	μA
Leakage Current	RF Off. V <sub>PAEN</sub> = 0V		0.2	10	μA
TX Output P <sub>1dB</sub>	CW		+32		dBm
Ramp ON/OFF Time	10<->90% Ref from Control Voltage to RF Power		200		nS
PA Stability - Output VSWR	CW No Spurious above -41.25 dBm/MHz		6:1		
Output Power Range		0		27	dBm
Thermal Resistance, θ <sub>Jc</sub>	Junction to Case		25		°C/W

## Logic Truth Table

Mode	PA_EN
Transmit	High
Idle	Low

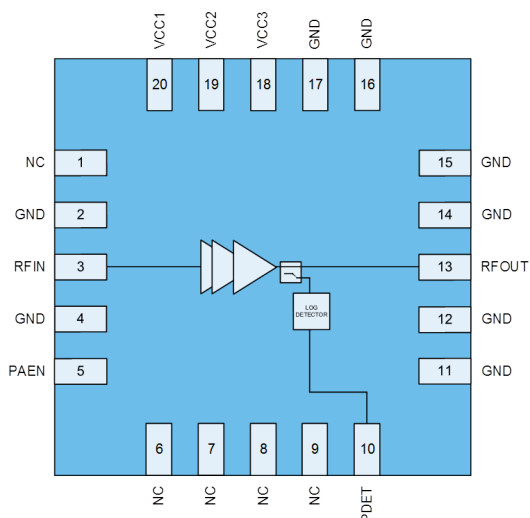
### Evaluation Board Schematic and Layout



### Bill of Material

Ref. Des.	Value	Description	Manuf.	Part number
-	-	Printed Circuit Board		
U1	-	5GHz Wi-Fi Power Amplifier	Qorvo	RFPA5562
C6, C7, C8	10 pF	Capacitor, Chip, 5%, 50V, C0G, 0402	Murata	GRM1555C1H100JA01D
C5	1000 pF	Capacitor, Chip, 10%, 50V, X7R, 0402	Murata	GRM155R71H102KA01D
C1, C2, C3	2.2 $\mu$ F	Capacitor, Chip, 10%, 6.3V, X5R, 0402	Taiyo Yuden	RM JMK105BJ225KV-F
R1	0 $\Omega$	Resistor, Chip, 5%, 1/10W, 0402	Kamaya	RMC1/16SJPTH
R2	-	Do Not Install		

## Pin Configuration and Description

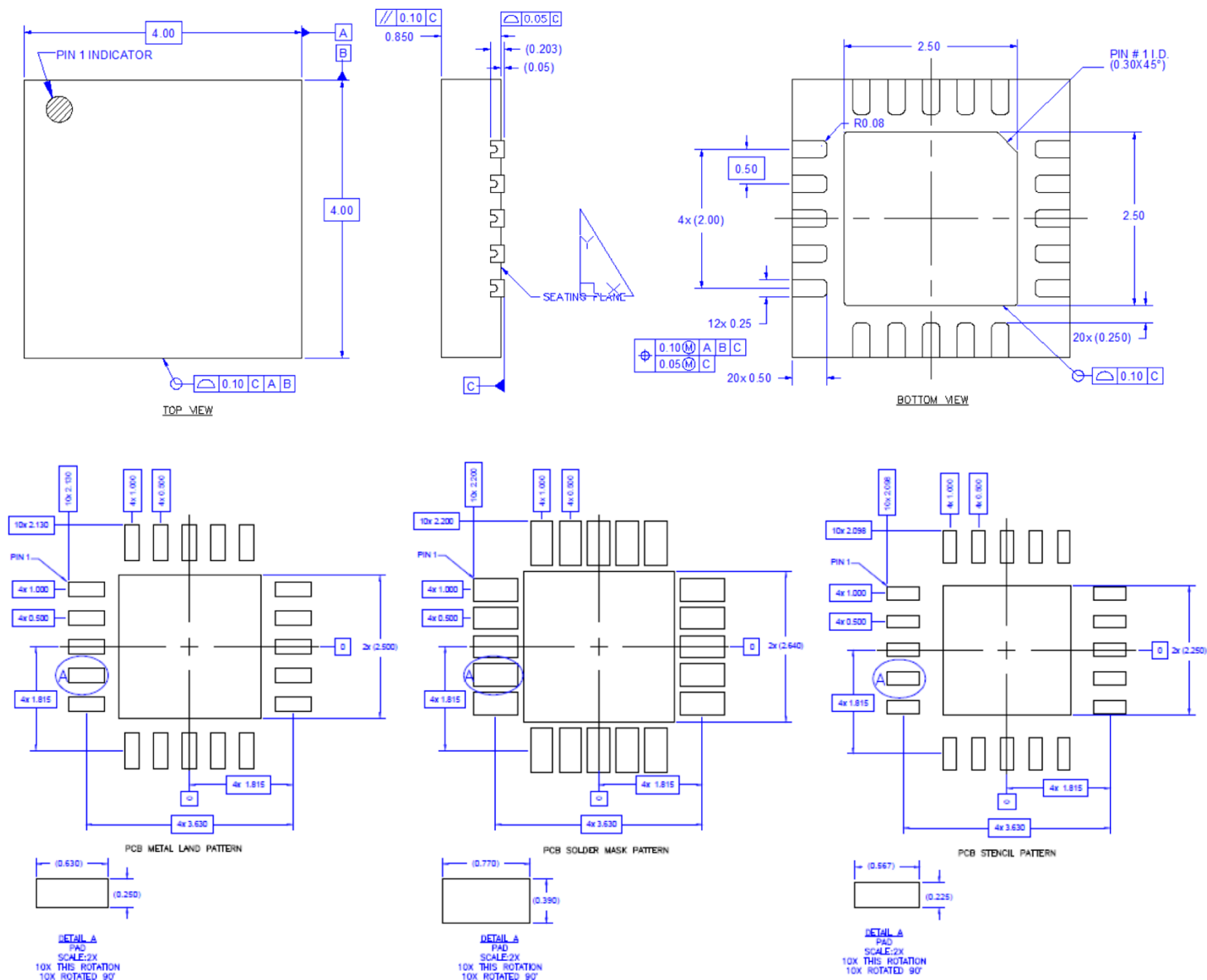


Top View

Pin Number	Label	Description
1	NC	No electrical connection.
2	GND	Ground connection.
3	RFIN	RF input. Internally matched to 50 $\Omega$ and DC Shorted. External DC blocking capacitor required.
4	GND	Ground connection.
5	PA_EN	Input enable bias voltage (regulated internally.)
6	NC	No electrical connection.
7	NC	No electrical connection.
8	NC	No electrical connection.
9	NC	No electrical connection.
10	PDET	DC power detector. Provides an output voltage proportional to the RF output power level
11	GND	Ground connection.
12	GND	Ground connection.
13	RFOUT	RF output. Internally matched to 50 $\Omega$ and DC shorted. External DC blocking capacitor required.
14	GND	Ground connection.
15	GND	Ground connection.
16	GND	Ground connection.
17	GND	Ground connection.
18	VCC3	3 <sup>rd</sup> stage supply voltage
19	VCC2	2 <sup>nd</sup> stage supply voltage
20	VCC1	1 <sup>st</sup> stage supply voltage
Backside Paddle	GND	RF/DC ground. Use recommended via pattern to minimize inductance and thermal resistance. See PCB Mounting Pattern for suggested footprint.

## Mechanical Information

### Dimensions and PCB Mounting Pattern



#### Notes:

1. All dimensions are in millimeters. Angles are in degrees.
2. Dimension and tolerance formats conform to ASME Y14.4M-1994.
3. The terminal #1 identifier and terminal numbering conform to JESD 95-1 SPP-012.

### Handling Precautions

Parameter	Rating	Standard
ESD – Human Body Model (HBM)	Class 1C	JEDEC JESD22-A114
ESD – Charged Device Model (CDM)	Class IV	JEDEC JESD22-C101
MSL – Moisture Sensitivity Level	Level 2	IPC/JEDEC J-STD-020



Caution!

ESD sensitive device

### Solderability

Compatible with both lead-free (260 °C max. reflow temperature) and tin/lead (245 °C max. reflow temperature) soldering processes.

Package lead plating: Electrolytic plated Au over Ni

### RoHS Compliance

This part is compliant with the 2011/65/EU RoHS directive (Restrictions on the Use of Certain Hazardous Substances in Electrical and Electronic Equipment), as amended by Directive 2015/863/EU.

This product also has the following attributes:

- Lead free
- Halogen Free (Chlorine, Bromine)
- Antimony Free
- TBBP-A (C<sub>15</sub>H<sub>12</sub>Br<sub>4</sub>O<sub>2</sub>) Free
- SVHC Free



### Contact Information

For the latest specifications, additional product information, worldwide sales and distribution locations:

**Web:** [www.qorvo.com](http://www.qorvo.com)

**Tel:** 1-844-890-8163

**Email:** [customer.support@qorvo.com](mailto:customer.support@qorvo.com)

### Important Notice

The information contained herein is believed to be reliable; however, Qorvo makes no warranties regarding the information contained herein and assumes no responsibility or liability whatsoever for the use of the information contained herein. All information contained herein is subject to change without notice. Customers should obtain and verify the latest relevant information before placing orders for Qorvo products. The information contained herein or any use of such information does not grant, explicitly or implicitly, to any party any patent rights, licenses, or any other intellectual property rights, whether with regard to such information itself or anything described by such information. **THIS INFORMATION DOES NOT CONSTITUTE A WARRANTY WITH RESPECT TO THE PRODUCTS DESCRIBED HEREIN, AND QORVO HEREBY DISCLAIMS ANY AND ALL WARRANTIES WITH RESPECT TO SUCH PRODUCTS WHETHER EXPRESS OR IMPLIED BY LAW, COURSE OF DEALING, COURSE OF PERFORMANCE, USAGE OF TRADE OR OTHERWISE, INCLUDING THE IMPLIED WARRANTIES OF MERCHANTABILITY AND FITNESS FOR A PARTICULAR PURPOSE.** Without limiting the generality of the foregoing, Qorvo products are not warranted or authorized for use as critical components in medical, life-saving, or life-sustaining applications, or other applications where a failure would reasonably be expected to cause severe personal injury or death.

Copyright 2016 © Qorvo, Inc. | Qorvo is a registered trademark of Qorvo, Inc.

# Mouser Electronics

Authorized Distributor

Click to View Pricing, Inventory, Delivery & Lifecycle Information:

Qorvo:

[RFPA5562TR13](#) [RFPA5562SB](#) [RFPA5562PCK-410](#)