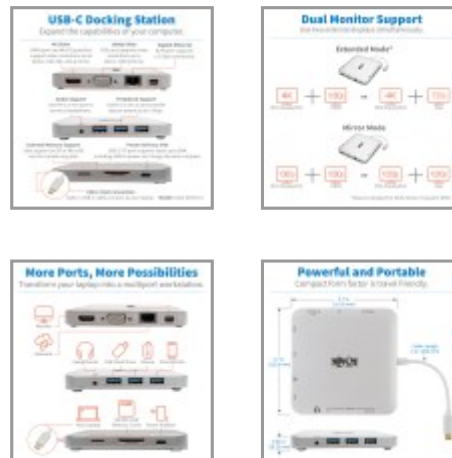


USB-C Dock, Dual Display - 4K HDMI/mDP, VGA, USB 3.2 Gen 1, USB-A/C Hub, GbE, 60W PD Charging

MODEL NUMBER: U442-DOCK2-S



USB-C dock adds HDMI, VGA, mDP, USB, PD Charging and other ports to your Chromebook, Windows laptop or PC.

Features

- USB-C Docking Station Turns Your Device's USB-C or Thunderbolt 3 Port into a Multiport Workstation** This multiport USB-C dock expands the potential of your Chromebook, Windows laptop or other device with a USB-C or Thunderbolt 3 port. It's ideal for transmitting digital audio and video to a large display, adding a thumb drive or other USB peripheral, powering and charging a PD Charging-compliant mobile device, connecting to a Gigabit Ethernet network and a lot more—all at the same time.
- Supports USB-C DisplayPort Alternate Mode for Converting Audio/Video Signals** By connecting the built-in USB-C cable to a source device that supports USB DisplayPort Alt Mode, you can output 4K video and digital audio to a monitor, television or projector without installing special software drivers.
- Transmits Crystal-Clear 4K Video and Digital Audio** The Mini DisplayPort (mDP) and HDMI outputs support Ultra HD video resolutions up to 3840 x 2160 (4K x 2K) at 30 Hz. The VGA output supports HD resolutions up to 1920 x 1200, including 1080p, at 60 Hz. A DisplayPort or DVI display may also be connected using an mDP to DP or HDMI to DVI adapter (adapters sold separately).
- Connects Up to 2 Displays at the Same Time** Connecting two external monitors simultaneously allows you to display the same image on both monitors, extend your host desktop across both with different windows open on each, or combine both into one large display as a video wall. Connect dual monitors in Extended (1080p mDP with 1080p HDMI or 1080p VGA) and Mirror (1080p mDP with 1080p HDMI or 1080p VGA) modes. HDMI and VGA video ports will not work simultaneously.
- Connects Keyboards, Thumb Drives and Other USB Peripherals** The USB-A hub ports accept up to three USB peripherals, such as flash drives, mice, keyboards and printers. They support fast USB 3.2 Gen 1 data transfer rates up to 5 Gbps and are backward compatible with USB 2.0 and USB 1.1 devices. One USB port also supports BC 1.2 charging with 5V 1.5A (7.5W) of power dedicated to fast-charging your mobile device. Note: Host must support USB OTG (On-the-Go).
- PD 2.0 Charging Port Charges Connected Device via AC Wall Charger** The USB-C Power Delivery port supports power output up to 20V 3A (60W), which is sufficient for charging and powering the connected source device, such as an Android smartphone or Chromebook. Just connect the device's AC wall charger to the USB-C PD port. Note: USB-C PD port does not support Quick Charge (QC).
- Accesses a Wired Gigabit Ethernet Network** The RJ45 port offers access to a Gigabit Ethernet network when no Wi-Fi is available or when a wired connection offers faster speeds. Connect using a UTP cable (sold separately), and enjoy true 10/100/1000 Mbps Ethernet speeds for fast data transfers.
- Connects Audio Equipment** The USB-C hub's 3.5 mm mini stereo jack is convenient for connecting speakers, headphones or a microphone to your workstation. You can listen to music or record the latest episode of your podcast.
- Allows External Memory Access** The memory card slots support Micro SD and SD/MMC cards for

Highlights

- Connects 2 displays at the same time for easy multitasking and increasing productivity
- Supports Ultra HD 4K resolutions up to 3840 x 2160 @ 30 Hz for crystal-clear video
- Joins a wired 10/100/1000 Gigabit Ethernet network when no Wi-Fi is available
- Provides 20V 3A (60W) power output for fast-charging large-capacity mobile devices
- USB-C and USB-A hub ports allow connection of flash drives and other peripherals

Applications

- Extend or mirror your laptop or PC monitor on multiple displays to aid in multitasking and increase productivity
- Access a wired Ethernet network in a location with no or spotty Wi-Fi
- Transfer data to and from a USB flash drive, Micro SD or SD/MMC memory card
- Charge your notebook or laptop by connecting its wall charger to the USB-C PD Charging port
- Connect a microphone/headset to record a podcast or listen to music

System Requirements

- Source device with USB-C or Thunderbolt 3 port that supports USB DisplayPort Alternate



Tripp Lite
1111 W. 35th Street
Chicago, IL 60609 USA
Telephone: 773.869.1234
www.tripplite.com

transferring data to and from your connected computer, laptop or tablet.

Built-In USB-C Cable Connects in Either Direction Unlike traditional USB cables that connect in only one direction, the reversible USB-C male connector plugs into a USB-C or Thunderbolt 3 port in either direction for an instant connection every time.

Ready to Use Right Out of the Package The plug-and-play USB-C dock for Windows laptops, Chromebooks and other devices requires no software, drivers or external power. The compact unit fits easily into a pocket, briefcase or laptop bag for connecting on the go.

Mode

- Display device with DisplayPort*, Mini DisplayPort, VGA, DVI* or HDMI input
 - Not for use with Thunderbolt monitors
- *Requires adapter (sold separately)

Package Includes

- U442-DOCK2-S USB-C Docking Station, Dual Display, Silver
- Owner's manual

Specifications

OVERVIEW	
UPC Code	037332213488
Product Type	Docking Station
Technology	Cat5/5e; Cat6; DisplayPort; HDMI; Stereo Audio; USB; USB 3.0 (SuperSpeed); USB 3.1 (Gen 1); VGA/SVGA; PD Charging
Host Connector	USB C (MALE)
VIDEO	
Number of Monitors Supported	2
Video Ports	MINI DISPLAYPORT (FEMALE); HDMI (FEMALE); HD15 (FEMALE)
Video Ports Detail	DisplayPort 1.2; HDMI 1.4; HDCP 1.4
Resolutions Supported	Mini DisplayPort: 4K 30Hz (3840 x 2160)HDMI: 4K 30Hz (3840 x 2160)VGA: 1920 x 1200 60Hz
Max Supported Video Resolution	MDP/HDMI: 3840 X 2160 (4K X 2K) @ 30HZ; VGA: 1920 X 1200 (1080P) @ 60HZ
Extended Mode	Yes
Extended Mode Details	1x Mini DP (1080P) + 1x HDMI (1080P)1x Mini DP (1080P) +1x VGA (1080P)
Mirror Mode	Yes
Mirror Mode Details	1x Mini DP (1080P) + 1x HDMI (1080P)1x Mini DP (1080P) +1x VGA (1080P)
Max Supported Color Depth	36-bit Deep Color
Chroma Sub Sampling	4:2:0; 4:2:2; 4:4:4
AUDIO	
Audio Ports	3.5MM (FEMALE)



Tripp Lite
1111 W. 35th Street
Chicago, IL 60609 USA
Telephone: 773.869.1234
www.tripplite.com

Audio Ports Detail	Mini stereo jack supports both speakers/headphones and microphone support
Audio Specification	Stereo Audio
DATA	
Data Ports	(3) USB A (FEMALE)
Data Ports Detail	(3) USB-A - USB 3.2 Gen 1 (5 Gbps)
NETWORK	
Network Ports	RJ45 (FEMALE)
STORAGE	
Card Slots	SD (FEMALE); MICRO SD (FEMALE)
Card Slots Detail	SD 3.0 Memory Card slots (SD and MicroSD) cannot be used simultaneously
INPUT	
Built-In Cable Length (ft.)	0.43
Built-In Cable Length (m)	0.13
Built-In Cable Length (in.)	5.15
Built-In Cable Length (cm)	13.1
Bus Powered	Yes
Product Length (in.)	9.75
Product Length (ft.)	1
BATTERY	
Battery Charging (5V/1.5A Port)	Yes
POWER	
USB Power Delivery (PD) Charging Support	Yes
USB Power Delivery (PD) Charging Specification	2.0
USER INTERFACE, ALERTS & CONTROLS	
LED Indicators	Green (Power), Orange (Transmitting Data)
CHARGING	
Charging Ports / Amps	0.9A; 1.5A; 3A
Charging Ports	USB-C: 60W (20V 3A) Power Delivery (PD 2.0); USB-A: 5V 1.5A (7.5W)
Total Charging Watts	60



Tripp Lite
1111 W. 35th Street
Chicago, IL 60609 USA
Telephone: 773.869.1234
www.tripplite.com

PHYSICAL	
Color	Silver
Cable Jacket Rating	VW-1
Material of Construction	Aluminum, PVC
Unit Dimensions (hwd / in.)	0.6 x 4.7 x 4.7
Unit Packaging Type	Box
Unit Weight (kg)	0.23
Unit Weight (lbs.)	0.50
ENVIRONMENTAL	
Operating Temperature Range	32 to 113 F (0 to 45 C)
Storage Temperature Range	14 to 158 F (-10 to 70 C)
BTUs	17.1 BTU/Hr
Power Consumption (Watts)	5
Operating Humidity Range	10% to 85% RH, Non-Condensing
Storage Humidity Range	5% to 90% RH, Non-Condensing
Power Provided to Connected Device(s)	5V 0.9A Output (USB A), Up to 20V 3A (60W) Input (USB C)
COMMUNICATIONS	
Network Speed	Gigabit Ethernet (10/100/1000)
IEEE Standards Supported	802.3; 802.3u; 802.3az; 802.3x
CONNECTIONS	
Ports	11
Side A - Connector 1	USB C (MALE)
Side B - Connector 1	HD15 (FEMALE); HDMI (FEMALE); MINI DISPLAYPORT (FEMALE)
Side B - Connector 2	(3) USB 3.0 A (FEMALE)
Side B - Connector 3	MICRO SD (FEMALE); SD (FEMALE)
Side B - Connector 4	RJ45 (FEMALE)
Side B - Connector 5	USB Type-C (FEMALE)
Side B - Connector 6	3.5MM (FEMALE)
Connector Plating	Nickel
FEATURES & SPECIFICATIONS	
Displayport Specification	1.2
HDCP Specification	1.4



Tripp Lite
1111 W. 35th Street
Chicago, IL 60609 USA
Telephone: 773.869.1234
www.tripplite.com

USB Hub Ports	Yes
Number of USB Hub Ports	3
USB Specification	USB 3.0 (up to 5 Gbps); USB 3.1 Gen 1 (up to 5 Gbps)
Driver Required	No
Recommended Category Cable	Cat5/Cat5e/Cat6 Cables
Auto MDIX Support	Yes
Full Duplex Support	Yes
Suspend Mode Support	Yes
Remote Wakeup Support	Yes
SD Card Specification	SD; Micro SD
STANDARDS & COMPLIANCE	
Certifications	Tested to CE, FCC, RoHS, REACH
WARRANTY	
Product Warranty Period (Worldwide)	3-year limited warranty

© 2021 Tripp Lite. All rights reserved. All product and company names are trademarks or registered trademarks of their respective holders. Use of them does not imply any affiliation with or endorsement by them. Tripp Lite has a policy of continuous improvement. Specifications are subject to change without notice.

Tripp Lite uses primary and third-party agencies to test its products for compliance with standards. See a list of Tripp Lite's testing agencies:

<https://www.tripplite.com/products/product-certification-agencies>

Mouser Electronics

Authorized Distributor

Click to View Pricing, Inventory, Delivery & Lifecycle Information:

[Tripp Lite:](#)

[U442-DOCK2-S](#)