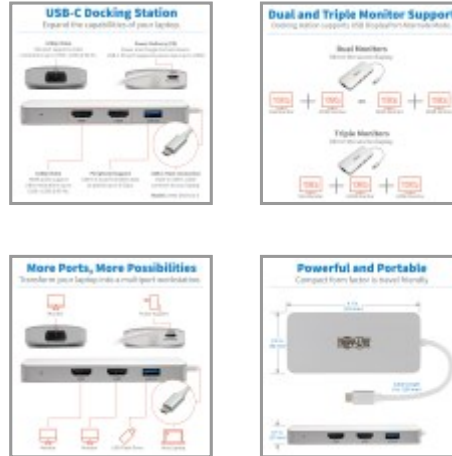


USB-C Dock, Triple Display - HDMI, VGA, USB 3.2 Gen 1, USB-A Hub, 100W PD Charging

MODEL NUMBER: U442-DOCK12-S



USB-C dock with PD Charging adds dual HDMI, VGA and USB ports to your laptop or tablet's USB-C or Thunderbolt 3 port.

Features

USB-C Docking Station Turns Your Device's USB-C or Thunderbolt 3 Port into a Workstation This multiport USB-C dock with PD Charging expands the potential of your Windows laptop, Chromebook, tablet or other device with a USB-C or Thunderbolt 3 port. It's ideal for transmitting digital audio and video to a large display, adding a thumb drive or other USB peripheral, powering and charging a PD Charging-compliant mobile device and more—all at the same time.

Supports USB-C DisplayPort Alternate Mode for Transmitting Audio/Video Signals By connecting the built-in USB-C cable to a source device that supports USB DisplayPort Alt Mode, you can output 1080p video and digital audio to a compatible monitor, television or projector without installing special software drivers.

Transmits Crystal-Clear 1080p Video and Digital Audio The two HDMI and single VGA ports support HD video resolutions up to 1920 x 1200, including 1080p, at 60 Hz. You can connect up to three external monitors at the same time in Mirror mode, which allows you to display the same 1080p image on all of them. A DVI display may also be connected using an HDMI to DVI adapter (sold separately).

USB Port Connects Keyboards, Thumb Drives and Other USB Peripherals The USB 3.2 Gen 1 port accepts USB peripherals, such as flash drives, mice, keyboards and printers. It supports fast data transfer rates up to 5 Gbps and is backward compatible with USB 2.0 and USB 1.1 devices. Note: Host must support USB OTG (On-the-Go).

PD 2.0 Charging Port Charges Connected Device via AC Wall Charger The USB-C Power Delivery port supports power output up to 20V 5A (100W), which is sufficient for charging and powering the connected source device, such as an Android smartphone or Chromebook. Just connect the device's AC wall charger to the USB-C PD port. Note: USB-C PD port does not support Quick Charge (QC).

Built-In USB-C Cable Connects in Either Direction Connect the reversible USB-C plug to your source device's USB-C or Thunderbolt 3 port. The fumble-free USB-C plug connects in either direction to ensure fast, easy connection every time.

Ready to Use Right Out of the Package The plug-and-play USB-C dock is specifically designed for use with Windows laptops and other notebooks, smartphones, tablets and devices equipped with a USB-C or Thunderbolt 3 port. It requires no extra software to be downloaded or installed. The compact unit fits easily into a pocket, briefcase or laptop bag for connecting on the go.

Highlights

- Mirrors 3 displays at the same time for easy multitasking and increasing productivity
- Supports HDMI and VGA resolutions up to 1920 x 1200 (including 1080p) @ 60 Hz
- Transmits audio/video signals from sources supporting USB DisplayPort Alt Mode
- Supports 20V 5A (100W) power output for fast-charging compatible mobile devices
- USB-A port transfers data from thumb drives or printers at speeds up to 5 Gbps

Applications

- Mirror your laptop or PC monitor on multiple displays to aid in multitasking and increase productivity
- Transfer files to and from a USB thumb drive or external hard drive
- Charge your notebook or laptop by connecting its wall charger to the USB-C PD Charging port
- Connect a microphone/headset to record a podcast or listen to music

System Requirements

- Source device with USB-C or Thunderbolt 3 port that supports USB DisplayPort Alternate Mode
- Display device with VGA, DVI* or HDMI input



Tripp Lite
1111 W. 35th Street
Chicago, IL 60609 USA
Telephone: 773.869.1234
www.tripplite.com

- Not for use with Thunderbolt monitors
- *Requires adapter (sold separately)

Package Includes

- U442-DOCK12-S USB-C Dock, Triple Display, Silver
- Owner's manual

Specifications

OVERVIEW	
UPC Code	037332213389
Product Type	Docking Station
Technology	HDMI; USB; USB 3.1 (Gen 1); VGA/SVGA; PD Charging
Host Connector	USB C (MALE)
VIDEO	
Number of Monitors Supported	3
Video Ports	(2) HDMI (FEMALE); HD15 (FEMALE)
Video Ports Detail	HDMI 1.4; HDCP 1.3
Resolutions Supported	HDMI: 1920 x 1200 60HzVGA: 1920 x 1200 60Hz
Max Supported Video Resolution	HDMI/VGA: 1920 x 1200 (1080P) @ 60Hz
Extended Mode	No
Mirror Mode	Yes
Mirror Mode Details	2x HDMI (1080p)1x HDMI (1080p) + 1x VGA (1080p)2x HDMI (1080p) + 1x VGA (1080p)
Max Supported Color Depth	24-bit True Color
Chroma Sub Sampling	4:4:4
DATA	
Data Ports	(1) USB A (FEMALE)
Data Ports Detail	(1) USB-A - USB 3.2 Gen 1 (5 Gbps)
INPUT	
Built-In Cable Length (ft.)	0.49
Built-In Cable Length (m)	0.15



Tripp Lite
1111 W. 35th Street
Chicago, IL 60609 USA
Telephone: 773.869.1234
www.tripplite.com

Built-In Cable Length (in.)	5.9
Built-In Cable Length (cm)	15
Bus Powered	Yes
Product Length (in.)	12
Product Length (cm.)	30.48
Product Length (ft.)	1
Product Length (m.)	0.3
BATTERY	
Battery Charging (5V/1.5A Port)	No
POWER	
USB Power Delivery (PD) Charging Support	Yes
USB Power Delivery (PD) Charging Specification	2.0
USER INTERFACE, ALERTS & CONTROLS	
LED Indicators	White (Power)
CHARGING	
Charging Ports / Amps	0.9A; 5A
Charging Ports	USB-C: 100W (20V 5A) Power Delivery (PD 3.0)
Total Charging Watts	100
PHYSICAL	
Color	Silver
Cable Jacket Rating	VW-1
Material of Construction	Aluminium
Shipping Dimensions (hwd / cm)	0.00 x 0.00 x 0.00
Shipping Dimensions (hwd / in.)	0.00 x 0.00 x 0.00
Shipping Weight (kg)	0.00
Shipping Weight (lbs.)	0.00
Unit Dimensions (hwd / in.)	0.67 x 4.7 x 2.2
Unit Packaging Type	Box
Unit Weight (kg)	0.10
Unit Weight (lbs.)	0.21
ENVIRONMENTAL	



Tripp Lite
1111 W. 35th Street
Chicago, IL 60609 USA
Telephone: 773.869.1234
www.tripplite.com

Operating Temperature Range	32 to 131 F (0 to 55 C)
Storage Temperature Range	14 to 158 F (-10 to 70 C)
Relative Humidity	5% to 95% RH, Non-Condensing
BTUs	2.9 BTU/Hr
Power Consumption (Watts)	0.85
Power Provided to Connected Device(s)	5V 0.9A (4.5W) Output (USB A), Up to 20V 5A (100W) Input (USB C)
CONNECTIONS	
Ports	5
Side A - Connector 1	USB C (MALE)
Side B - Connector 1	HD15 (FEMALE); (2) HDMI (FEMALE)
Side B - Connector 2	USB C (FEMALE)
Side B - Connector 3	USB 3.0 A (FEMALE)
Connector Plating	Nickel
FEATURES & SPECIFICATIONS	
HDCP Specification	1.3
USB Specification	USB 3.0 (up to 5 Gbps); USB 3.1 Gen 1 (up to 5 Gbps)
Driver Required	No
Full Duplex Support	Yes
Suspend Mode Support	Yes
STANDARDS & COMPLIANCE	
Certifications	Tested to CE, FCC, RoHS, REACH
WARRANTY	
Product Warranty Period (Worldwide)	3-year limited warranty

© 2021 Tripp Lite. All rights reserved. All product and company names are trademarks or registered trademarks of their respective holders. Use of them does not imply any affiliation with or endorsement by them. Tripp Lite has a policy of continuous improvement. Specifications are subject to change without notice. Tripp Lite uses primary and third-party agencies to test its products for compliance with standards. See a list of Tripp Lite's testing agencies: <https://www.tripplite.com/products/product-certification-agencies>

Mouser Electronics

Authorized Distributor

Click to View Pricing, Inventory, Delivery & Lifecycle Information:

[Tripp Lite:](#)

[U442-DOCK12-S](#)