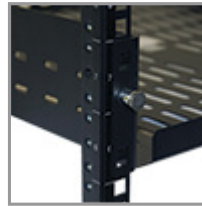
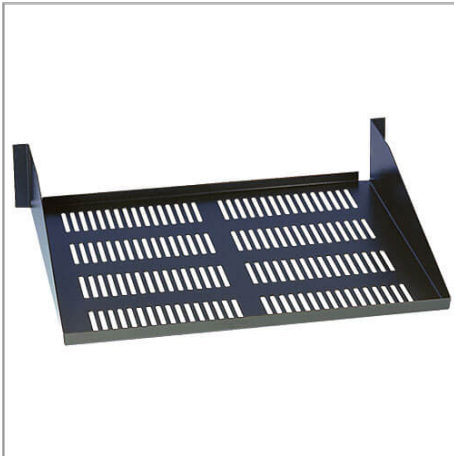


SmartRack 2U Cantilever Toolless Mount Fixed Shelf (50 lbs /22.7 kgs capacity; 18 in./457 mm depth)

MODEL NUMBER: **SRSHELF2PTM**



Highlights

- Fixed Shelf, 2U Cantilever Mount
- 4-post rack compatible
- 18-inch shelf depth
- Snap-in toolless mounting

Package Includes

- SRSHELF2PTM Shelf

Description

Tripp Lite's SRSHELF2PTM allows you to add a shelf to a 4-post rack to accommodate tower UPS systems, monitors or any other equipment that is not rackmounted. The unit supports 50 lbs (22.7 kgs) with an 18-in. depth.

Features

- Ideal for adding extra flat surfaces or shelf space in 4-post rack enclosures
- Supports a load of up to 50 lbs (22.7 kgs)
- 18-inch shelf depth to accommodate a wide variety of equipment
- Snap-in toolless mounting
- Vented design increases airflow to sensitive equipment
- Heavy-duty, cold-rolled steel construction with black finish

Specifications

OVERVIEW	
UPC Code	037332184672
PHYSICAL	
Shipping Dimensions (hwd / cm)	51.56 x 10.16 x 49.78
Shipping Dimensions (hwd / in.)	20.30 x 4.00 x 19.60
Shipping Weight (kg)	2.72



Tripp Lite
1111 W. 35th Street
Chicago, IL 60609 USA
Telephone: 773.869.1234
www.tripplite.com

Shipping Weight (lbs.)	6.00
Unit Dimensions (hwd / cm)	8.89 x 48.26 x 45.72
Unit Dimensions (hwd / in.)	3.5 x 19 x 18
Unit Weight (kg)	2.27
Unit Weight (lbs.)	5
WARRANTY	
Product Warranty Period (Worldwide)	5-year limited warranty

© 2021 Tripp Lite. All rights reserved. All product and company names are trademarks or registered trademarks of their respective holders. Use of them does not imply any affiliation with or endorsement by them. Tripp Lite has a policy of continuous improvement. Specifications are subject to change without notice. Tripp Lite uses primary and third-party agencies to test its products for compliance with standards. See a list of Tripp Lite's testing agencies: <https://www.tripplite.com/products/product-certification-agencies>

Mouser Electronics

Authorized Distributor

Click to View Pricing, Inventory, Delivery & Lifecycle Information:

Tripp Lite:

SRSHELF2PTM