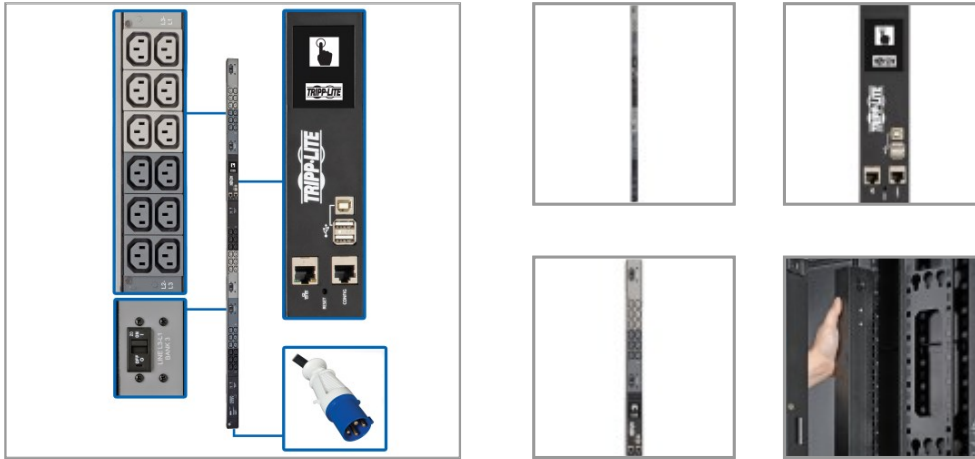


## 18.7kW 3-Phase Monitored PDU with LX Platform, 200-240V Output (36 C13), IEC 309 60A Blue, 0U, TAA

MODEL NUMBER: PDU3EVN6G60C



18.7kW 3-phase PDU with multifunction touchscreen LCD distributes and monitors AC power in an IT or industrial environment.

### Features

**3-Phase PDU Distributes and Monitors Network-Grade Power** Recommended for data centers, server rooms and network closets, the 18.7kW PDU3EVN6G60C provides real-time remote monitoring of voltage and load levels via built-in network connection. A six-foot (1.8-meter) cord with IEC 309 60A Blue (3P+E) input plug connects the 3-phase PDU to a compatible AC power source, generator or protected UPS. The firmware can be easily upgraded to ensure the 0U PDU continues to perform at its best as connected equipment adds new features.

**36 Outlets Dispense AC Power** During normal operation, 36 C13 outlets distribute AC power to connected equipment. Each 200-240V outlet is accompanied by an LED that illuminates when the outlet is ramped up and ready to be used. The outlets are split into six load banks, each protected by a 20A circuit breaker that trips if the bank's connected load exceeds its maximum load rating. Plug-lock insert sleeves are included to prevent connected cables from becoming accidentally dislodged.

**Built-In LX Platform Network Management Card Allows Remote Access 24/7** The built-in WEBCARDLX with the latest version of PowerAlert Device Manager firmware (PADM20) provides enhanced remote management capabilities, including customizable dashboard graphs to fit user preferences. The PADM20 upgrade and Tripp Lite's PowerAlert Element Manager (PAEM) software form a powerful tool for expanding maintenance functions in large installations, including firmware update checks and backup and restoration of device configurations.

**Color Touchscreen LCD Offers Important Data at a Glance** An easy-to-navigate color touchscreen LCD reports network data, including IP address, input current level per phase, and output current per load bank with  $\pm 1\%$  billing-grade accuracy. It also generates a unique QR code to allow read-only access to the 3-phase PDU via mobile device. If an EnviroSense2 module is connected to the PDU, the LCD also displays its status and environmental data, such as temperature and humidity.

**Easy to Install Vertically in an EIA-Standard 19 in. Rack** The 0U PDU mounts vertically using the included toolless mounting buttons or the included rack-mounting brackets. Spare buttons are also included. Use the included PDUMVROTATEBRKT kit to install the 3-phase PDU with outlets facing the rear for better airflow or equipment access.

**TAA-Compliant for GSA Schedule Purchases** The PDU3EVN6G60C is compliant with the Federal Trade Agreements Act (TAA), which makes it eligible for GSA (General Services Administration) Schedule and other federal procurement contracts.

**2-Year Warranty** The PDU3EVN6G60C is backed by a 2-year warranty, ensuring reliability and performance.

### Highlights

- 200-240V outlets distribute AC power to connected rack equipment
- 36 C13 outlets split into 6 separately breakered 20A single-phase load banks
- Pre-installed WEBCARDLX with latest version of PADM20 for enhanced remote management
- 6-ft. (1.83 m) power cord with IEC 309 60A Blue input connects to compatible AC source
- Color touchscreen LCD provides vital load and environmental data and network info

### Applications

- Power a major data center with hundreds of server racks running mission-critical applications
- Monitor power loads from various computers, switches, servers and other networking equipment
- Distribute power to a computer network in a large commercial or industrial facility

### Package Includes

- PDU3EVN6G60C 18.7kW 3-Phase Monitored PDU
- Built-in LX Platform interface
- Configuration cable
- (36) Plug-lock insert sleeves
- Rack-mounting hardware
- Spare mounting buttons



**Tripp Lite**  
1111 W. 35th Street  
Chicago, IL 60609 USA  
Telephone: 773.869.1234  
www.tripplite.com

- PDUMVROTATEBRKT  
mounting bracket accessory
- Owner's manual

## Specifications

OVERVIEW	
UPC Code	037332206800
PDU Type	Monitored
INPUT	
PDU Input Voltage	200-240V
Recommended Electrical Service	Three-phase 60A 200-240V service
Maximum Input Amps	45
PDU Plug Type	IEC-309 60A BLUE (3P+E)
Input Phase	3-Phase
Input Cord Length (ft.)	6
Input Cord Length (m)	1.83
OUTPUT	
Output Capacity Details	18.7kW (240V), 17.9kW (230V), 17.1kW (220V), 16.2kW (208V), 15.6kW (200V) total capacity; 26A max per output phase (L1-L2, L2-L3, L3-L1); 20A max per breakered outlet bank; 12A max per C13 outlet
Frequency Compatibility	50 / 60 Hz
Output Receptacles	(36) C13
Output Nominal Voltage	200-240V
Overload Protection	6 20A circuit breakers, 1 per outlet bank
USER INTERFACE, ALERTS & CONTROLS	
Reported Load Segments	Reports input current per phase (L1, L2, L3) and output current for each breakered load bank (B1-B6); Outlets are color-coded and labeled for phase and load bank identification; L1-L2 feeds black outlets (B1 & B4); L2-L3 feeds dark-gray outlets (B2 & B5); L3-L1 feeds light-gray outlets (B3 & B6)
Front Panel LCD Display	Touchscreen LCD reports NETWORK DATA (IP address, Subnet Mask, Gateway, MAC Address, Device Name, Model, Serial Number), INPUT PHASE DATA (Amperage, Wattage, Voltage per phase, plus Unbalance percentage), LOAD BANK DATA (Amperage, Wattage, Voltage per load bank, plus total PDU output in watts), CONFIGURATION DATA (Listing of current configuration settings), ENVIRONMENTAL DATA (Reports data and status of E2 sensor modules; Sensor options are available for temperature and humidity, plus input and output dry contacts), MOBILE ACCESS (Generates a unique QR code to view reported PDU details on a mobile device)
Current Measurement Accuracy (Amps)	+/-1%
Voltage Measurement Accuracy (Volts)	+/-1%



**Tripp Lite**  
1111 W. 35th Street  
Chicago, IL 60609 USA  
Telephone: 773.869.1234  
[www.tripplite.com](http://www.tripplite.com)

Power Measurement Accuracy (Watts)	+/-1%
<b>PHYSICAL</b>	
Form Factors Supported	Vertical rackmount installation supported with included mounting brackets; supports toolless mounting in button-mount compatible racks
Material of Construction	Metal
PDU Form Factor	Vertical (0U)
Shipping Dimensions (hwd / cm)	17.50 x 24.51 x 192.71
Shipping Dimensions (hwd / in.)	6.89 x 9.65 x 75.87
Shipping Weight (kg)	11.53
Shipping Weight (lbs.)	25.43
Unit Dimensions (hwd / cm)	177.8 x 5.5 x 6.3
Unit Dimensions (hwd / in.)	70 x 2.17 x 2.49
Unit Weight (kg)	8.46
Unit Weight (lbs.)	18.66
<b>ENVIRONMENTAL</b>	
Operating Temperature Range	0C ~ 50C (32F ~ 122F)
Storage Temperature Range	-30°C to +60°C (-22°F to +140°F)
Relative Humidity	5 to 95% non-condensing
<b>COMMUNICATIONS</b>	
SNMP Compatibility	Pre-installed LX platform network interface
<b>SPECIAL FEATURES</b>	
High Availability PDU Features	Auto Probe Monitoring (included)
<b>STANDARDS &amp; COMPLIANCE</b>	
Certifications	Tested to UL 60950-1:2007 R10.14 (USA), CAN/CSA-C22.0 No 60950-1-07-A1:2009 A2:2014 (Canada), Class A Part 15 (EMI), NOM (Mexico), RoHS compliant, TAA Compliant
<b>WARRANTY</b>	
Product Warranty Period (Worldwide)	2-year limited warranty

© 2021 Tripp Lite. All rights reserved. All product and company names are trademarks or registered trademarks of their respective holders. Use of them does not imply any affiliation with or endorsement by them. Tripp Lite has a policy of continuous improvement. Specifications are subject to change without notice. Tripp Lite uses primary and third-party agencies to test its products for compliance with standards. See a list of Tripp Lite's testing agencies: <https://www.tripplite.com/products/product-certification-agencies>

# Mouser Electronics

Authorized Distributor

Click to View Pricing, Inventory, Delivery & Lifecycle Information:

[Tripp Lite:](#)

[PDU3EVN6G60C](#)