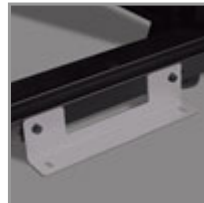
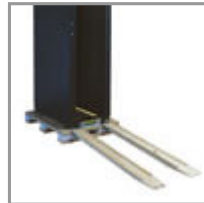


45U SmartRack Standard-Depth Rack Enclosure Cabinet with doors, side panels & shock pallet packaging

MODEL NUMBER: **SR45UBSP1**



Description

45U SmartRack Enclosure ships mounted on a special pallet that features additional reinforcement and shock-absorbing material. The pallet's protective cushion safeguards the enclosure and the precision components it contains during re-shipping. Reinforced pallets and reusable packaging provide the flexibility to fully configure rack enclosures in a centralized location and safely re-ship them to remote sites, saving significant service costs. They also allow the freedom to custom-configure enclosures with network and server hardware along with UPS systems, PDUs, KVM switches and a variety of other devices prior to final installation. At the desired location the SR45UBSP1 can be easily maneuvered with its preinstalled casters and can be secured by adjusting the preinstalled levelers.

The SR45UBSP1 houses 3000 lbs (1360.8 kgs) of standard 19-inch rack equipment in 45U. Its front and rear pairs of vertical rails have square mounting holes that are adjustable in quarter-inch increments from 4 to 37 inches. Adjustment is quick and an easy-view depth index ensures consistent rail placement without requiring time-consuming measurements. Each rack space within the enclosure is numbered for ready reference.

Two of the adjustable vertical mounting rails support toolless button-mount 0U installation of up to four compatible PDUs and cable managers. This feature makes it easier to route cabling to rack equipment and reduces cord clutter.

With its locking, reversible, removable front and rear doors, and locking, removable side panels, the SR45UBSP1 provides ultimate equipment safety. The side panels are half size for ease of removal and reinstallation. The split rear door design allows the enclosure to be placed closer to a wall. The SR45UBSP1 meets all requirements toward PCI DSS compliance.

Highlights

- 45U SmartRack enclosure with doors and side panels
- Ships fully assembled on shock pallet with loading ramps
- Standard 24" (600mm) width and 42" (1050mm) depth for optimizing floor space
- 4 interior vertical posts with unthreaded square hole openings
- Massive front to rear ventilation capacity
- 3000 lbs (1360.8 kgs) stationary / 2250 lbs (1020.6 kgs) rolling load capacity
- Locking, removable, reversible front and rear doors
- Locking, removable side panels keyed alike with doors
- Meets all enclosure requirements towards PCI DSS (Payment Card Industry Data Security Standard) Compliance

Package Includes

- SR45UB Rack Enclosure
- (4) side panels
- (4) side panel locks
- (2) door & side panel keys
- (50) M6 screws
- (50) M6 washers
- (50) M6 cage nuts
- Owner's Manual



The top panel of the SR45UBSP1 is vented to help remove warm air from the enclosure and draw in cool air by convection. The top panel includes ports for cable routing, and can be quickly removed without tools. To facilitate cable access, the SR45UBSP1 is open-bottom.

All components of the SR45UBSP1 are grounded to the enclosure frame. Front and rear threaded grounding points are provided for connection to the facility earth ground. The removable front and rear doors feature quick-release ground wires.

The SR45UBSP1 comes with a 5-year product warranty. As part of the SmartRack family it is compatible with Tripp Lite's extensive range of rackmount accessories, enabling you to customize your solution to meet any requirements.

Features

- This special version of Tripp Lite's SR45UB SmartRack Enclosure ships mounted on a "shock pallet" that features additional reinforcement and shock-absorbing material for safe loading and re-shipping
- Heavy-duty ramps (included) allow enclosure to be rolled on and off the pallet during configuration
- Shipping Capacity: shock-pallet supports up to 1250 lbs (566.9 kgs) (281 lbs (127.5 kgs) SmartRack Enclosure weight + up to 969 lbs (439.5 kgs) of additional equipment), enabling safe loading and re-shipping
- Final Installation Capacity: SmartRack Enclosure supports up to 3000 lbs (1360.8 kgs) of equipment stationary and 2250 lbs (1020.6 kgs) rolling.
- Ships fully assembled for rapid deployment and roll into place on heavy-duty pre-installed casters. (casters are removable)
- Front and rear sets of equipment mounting rails adjust in 1/4" increments. Adjustment is quick and convenient. The easy-view depth index ensures consistent rail placement without requiring time-consuming measurements.
- Toolless accessory mounting rails (2 rails per enclosure) include slots for quick installation of compatible PDUs and vertical cable managers. Mounting slots are arranged in an industry-standard pattern compatible with a wide variety of accessories. Each rail can accommodate two vertical PDUs or cable managers side-by-side (four items per enclosure).
- Enclosure includes mounting hardware of 50 pieces of M6 cage nuts and 50 pieces of M6 screws.
- Textured powder coat finish for tough resistance to environmental concerns such as deployment in warehouses.
- Massive front to rear ventilation capacity. 65+% open space in door perforation pattern meets or exceeds server manufacturer requirements.
- Maximum usable internal depth of 37 inches/94 cm (front to rear rail).
- Front door is locking, reversible and removable.
- Rear doors are locking and reversible. Split rear door design reduces clearance requirements for service entry allowing the enclosure to be placed closer to a wall.
- Locking removable side panels are 'half size' to make them smaller and lighter improving ease of installation and servicing. Two side panels per side (4 panels total). Side panels are keyed alike to the



front and rear doors.

- Built in baying tabs allow enclosures to be combined securely in rows. Center-to-center width can be set at 750mm or 29.5" to match standard data center floor tiles.
- Leveling feet extend to allow enclosure to be positioned on uneven floors. Levelers are removable.
- Convenient grounding system. All components are grounded to the enclosure frame which includes multiple connections for facility ground. Front and rear doors include quick-release ground wires.
- Open bottom for cable access.
- Top panel has generous cable access holes. Panel can be removed toollessly in seconds without having to disconnect cables first.
- Included stabilizing brackets are used for shipment and can be reattached at the bottom of the enclosure frame on the inside or outside of the rack.
- Meets all enclosure requirements towards PCI DSS (Payment Card Industry Data Security Standard) Compliance
- Compatibility with airflow optimization accessories as well as cable management accessories.

Specifications

OVERVIEW	
UPC Code	037332174864
Device Compatibility	Patch Panel; Network Switch; UPS; Server
Rack Type	Enclosure
PHYSICAL	
Color	Black
Factory Preset Rack Depth (in.)	27.75
Factory Preset Rack Depth (cm)	70.5
Factory Preset Rack Depth (mm)	705
Maximum Device Depth (cm)	93.98
Maximum Device Depth (in.)	37
Maximum Device Depth (mm)	940
Minimum Device Depth (cm)	10.16
Minimum Device Depth (in.)	4
Minimum Device Depth (mm)	102
Rack Height	45U
Shipping Dimensions (hwd / cm)	229.24 x 66.04 x 114.30
Shipping Dimensions (hwd / in.)	90.25 x 26.00 x 45.00



Tripp Lite
1111 W. 35th Street
Chicago, IL 60609 USA
Telephone: 773.869.1234
www.tripplite.com

Shipping Weight (kg)	161.93
Shipping Weight (lbs.)	357.00
Unit Dimensions (hwd / cm)	212.725 x 60.02 x 109.22
Unit Dimensions (hwd / in.)	83.75 x 23.63 x 43
Unit Weight (kg)	139.25
Unit Weight (lbs.)	307
Weight Capacity - Rolling (kg)	1,021
Weight Capacity - Rolling (lbs.)	2250
Weight Capacity - Stationary (kg)	1,361
Weight Capacity - Stationary (lbs.)	3000
Rack Depth	Standard
Number of Vertical Mounting Rails	4
SPECIAL FEATURES	
Grounding Lug	Front and back rear door frames
Built-in Cable Management	Yes
STANDARDS & COMPLIANCE	
Certifications	UL60950; RoHS; CE; IP20 Protection Rating
Approvals	EIA/ECA-310-E
WARRANTY	
Product Warranty Period (Worldwide)	5-year limited warranty

© 2021 Tripp Lite. All rights reserved. All product and company names are trademarks or registered trademarks of their respective holders. Use of them does not imply any affiliation with or endorsement by them. Tripp Lite has a policy of continuous improvement. Specifications are subject to change without notice.

Tripp Lite uses primary and third-party agencies to test its products for compliance with standards. See a list of Tripp Lite's testing agencies:

<https://www.tripplite.com/products/product-certification-agencies>

Mouser Electronics

Authorized Distributor

Click to View Pricing, Inventory, Delivery & Lifecycle Information:

[Tripp Lite:](#)

[SR45UBSP1](#)