

Rack Mount Kits

SELECTOR GUIDE: RACK MOUNT KITS

Instrument	Fixed Single	Fixed Dual	Shelf	Rear or Rail Support
Series 2000 Series 2500 6220 6487 2182A 2700 6221 6514 Series 2300 2701 6485 6517B	4288-1	4288-2	4288-9 ³ 4299-7	
Series 2100, Series 2400, 3390, 6430	4299-3	4299-4	4299-7	
Series 2260B			2260B-RMK-EIA 2260B-RMK-JIS	
Series 2268	2268-RMK-1	2268-RMK-1		
2290-5	2290-5-RMK-1	2290-5-RMK-2		
2290-10	2290-10-RMK-1	2290-10-RMK-2	4299-7	
2450, 2460, 2461, DMM7510	4299-8	4299-9 4299-10 ¹ 4299-11 ²		
Series 2600B	4299-1	4299-2		
2651A, 2657A, 708B	4299-6			
2750, System 46, System 46T				4288-7
707B	Included on 707B chassis			
Series 3700A				4288-10
4200-SCS/C or 4200-SCS/F				4200-RM
7002	7002-RMK-1			

1. Model 4299-10 mounts one Model 2450 and one Series 26XXB.

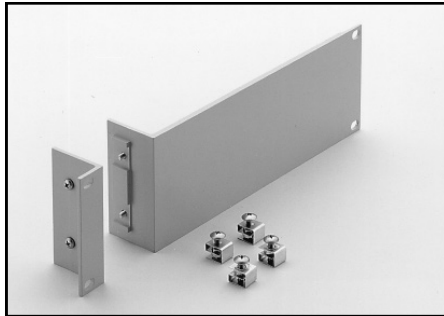
2. Model 4299-11 mounts one Model 2450 and one Series 2000, 2400, and all other 2U half-rack instruments except the Series 2200 and Series 2290 instruments.

3. Model 4288-9 is the recommended shelf for these models based on color.

Rack Mount Kits

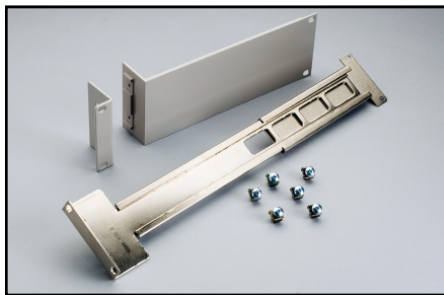
Fixed Single Unit Rack Kit

(For mounting of one half-rack-width instrument or one full-rack-width instrument)



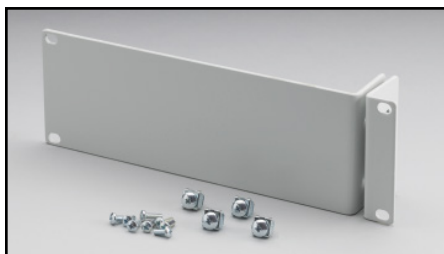
4288-1: For half-rack-width models. 2U (3.5 in.) high.

For use with: Series 2000, 2182A, Series 2300, 2700, 2701, 6220, 6221, 6485, 6487, 6514, 6517B, 7001.



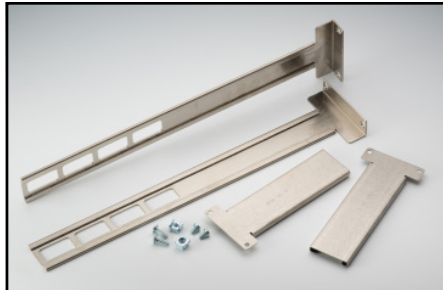
4299-1: For half-rack-width models. 2U (3.5 in.) high.

For use with: Series 2600B



4299-3: For half-rack-width models. 2U (3.5 in.) high. Allows for mounting of a 2U Keysight Instrument as well.

For use with: Series 2100, Series 2400, 3390, 6430



4299-6: For full-rack-width models. 2U (3.5 in.) high.

For use with: 2651A, 2657A, 708A

4299-8: For half-rack-width models. 2U (3.5 in.) high.

For use with: 2450, 2460, 2461, DMM7510 (graphical display models only)

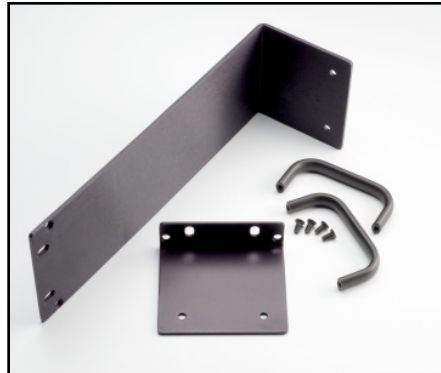
2268-RMK-1: For half-rack-width models. 1U (1.75 in.) high.

For use with: Series 2268



2290-5-RMK-1: For half-rack-width models. 2U (3.5 in.) high.

For use with: 2290-5



2290-10-RMK-1: For half-rack-width models. 2U (3.5 in.) high.

For use with: 2290-10



7002-RMK-1: 4U (7.0 in.) high. Full-rack model.

For use with: 7002

Rack Mount Kits

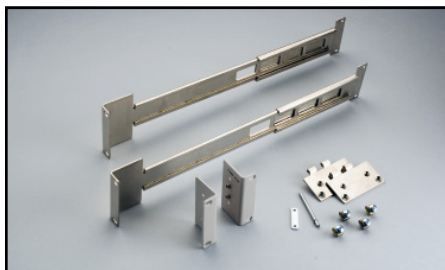
Fixed Dual Unit Rack Kit

(For mounting two or more instruments in the width of a rack)



4288-2: For half-rack-width models. 2U (3.5 in.) high.

For use with: Series 2000, 2182A, Series 2300, 2700, 2701, 6220, 6221, 6485, 6487, 6514, 6517B, 7001



4299-2: For half-rack-width models. 2U (3.5 in.) high.

For use with: Series 2600B



4299-4: For half-rack-width models. 2U (3.5 in.) high. Allows mounting a 2U Keithley instrument with a Keysight instrument.

For use with: Series 2100, Series 2400, 3390, 6430

4299-9: For half-rack-width models. 2U (3.5 in.) high.

For use with: 2450, 2460, 2461, DMM7510 (graphical display models only)

4299-10: For half-rack-width models. 2U (3.5 in.) high.

For use with: 2450, 2460, 2461, DMM7510 (graphical display models only), Series 2260B

4299-11: For half-rack-width models. 2U (3.5 in.) high.

For use with: 2450, 2460, 2461, DMM7510 (graphical display models only), Series 2000, Series 2400 or a 2U Keysight instrument

2268-RMK-2: For half-rack-width models. 1U (1.75 in.) high.

For use with: Series 2268



2290-5-RMK-2: For half-rack-width models. 2U (3.5 in.) high.

For use with: 2290-5



2290-10-RMK-2: For half-rack-width models. 2U (3.5 in.) high.

For use with: 2290-10

Rack Mount Kits

Shelf Rack Kit

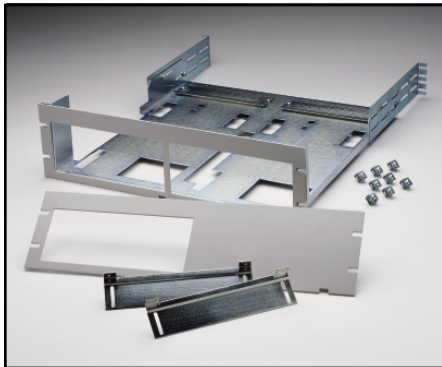
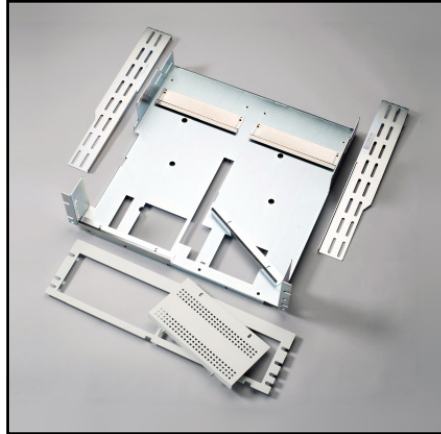
(For mounting of one or two instruments in a rack)

2260B-RMK-EIA: Supports the EIA rack standard. Allows for full-rack-width assembly configuration of sixth-, third-, and half-rack-width models. 3U (5.25 in.) high.

For use with: Series 2260B

2260B-RMK-JIS: Supports the JIS rack standard. Allows for full-rack-width assembly configuration of sixth-, third-, and half-rack-width models. 3U (5.25 in.) high.

For use with: Series 2260B



4288-9: Mounts 2U-high instruments in 3U-high rack space. 3U (5.25 in.) high.

For use with: Series 2000, 2182A, Series 2300, 2700, 2701, 6220, 6221, 6485, 6487, 6514, 6517B, 7001

4299-7 Universal Shelf Rack Kit:

Mounts 2U-high instruments in 3U-high rack space. 3U (5.25 in.) high.

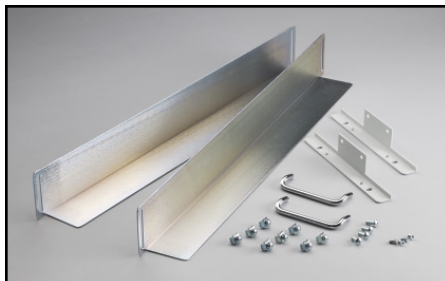
For use with: Series 2000, Series 2100, 2182A, Series 2200, Series 2300, Series 2400 (Except graphical) 2700, 2701, 6220, 6221, 6430, 6485, 6487, 6514, 6517B, 7001

RMU 2U: 3U (5.25 in.) high.

For use with: 2290-5 and 2290-10

Rack Mount Kits

Rear/Rail Support Kits and Miscellaneous Rack Accessories



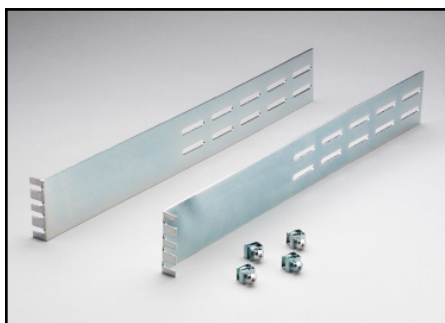
4200-RM

For use with: 4200-SCS



4288-10

For use with: Series 3700A



4288-7

For use with: 2750, System 46, System 46T



4299-5: 1U (1.75") vented panel.

For use with: Series 2600B

376-7589-xx: Cosmetic filler panel

For use with Series 2200



4200-KEY-RM

For use with: 4200-SCS

Mouser Electronics

Authorized Distributor

Click to View Pricing, Inventory, Delivery & Lifecycle Information:

[Keithley Instruments, Inc.:](#)

[4288-5](#) [4288-1](#) [4299-2](#)