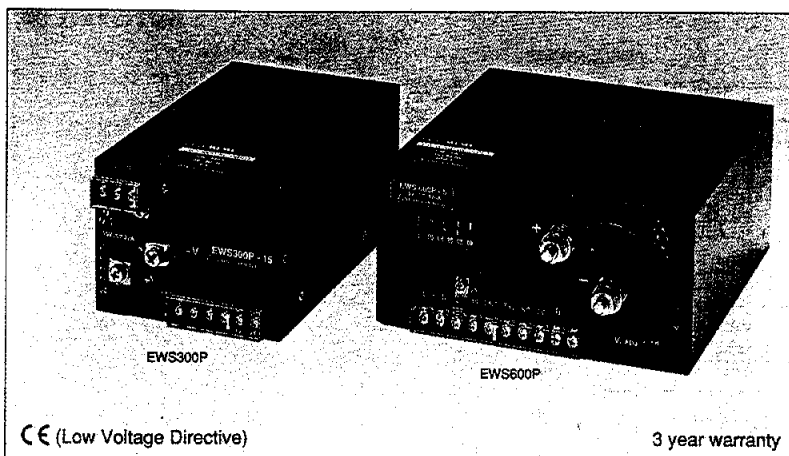


EWS-P-SERIES

Single output 300W ~ 600W

LAMBDA
DENSEI-LAMBDA

Unit Type Power Supply



Model name




EWS 300P-5

Name of series Output power Nominal output voltage

Features

- CE marking (Low Voltage Directive)
- PFHC (EN61000-3-2)
- EMI (EN55011-B, EN55022-B, VCCI-2, FCC-B)
- EMC (EN61000-4-2, -3, -4, -6)
- Wide input voltage range: Universal input 85 ~ 265VAC
- Wide voltage adjustable range: $\pm 20\%$
- 3 year warranty

Specifications

1. Input voltage range	85 ~ 265VAC (47 ~ 63Hz) universal input, PFHC: 85 ~ 255VAC
2. Power factor	0.95 (typ) 100/200VAC at full load
3. Output voltage range	$\pm 20\%$ (2V, 3.3V: $-10 \sim +20\%$)
4. Cooling	Forced air cooling by internal fan
5. Operating ambient temperature	$-10 \sim +65^{\circ}\text{C}$ (Standard mounting) Output derating: 100% at $-10 \sim +50^{\circ}\text{C}$, 70% at $+60^{\circ}\text{C}$, 55% at $+65^{\circ}\text{C}$
6. Withstand voltage	Input-output: 3kVAC, Input-chassis: 2kVAC, Output-chassis: 500VAC for 1 min.
7. Safety standard	Approved by UL1950  , CSA950  and EN60950 
8. EMI	Conforms to EN55011-B, EN55022-B, VCCI-class 2 and FCC-B
9. PFHC	Conforms to EN61000-3-2
10. Functions	Over voltage protection, Over current protection, Thermal protection, Remote sensing, Remote on/off control, Power failure signal, Output current balancing

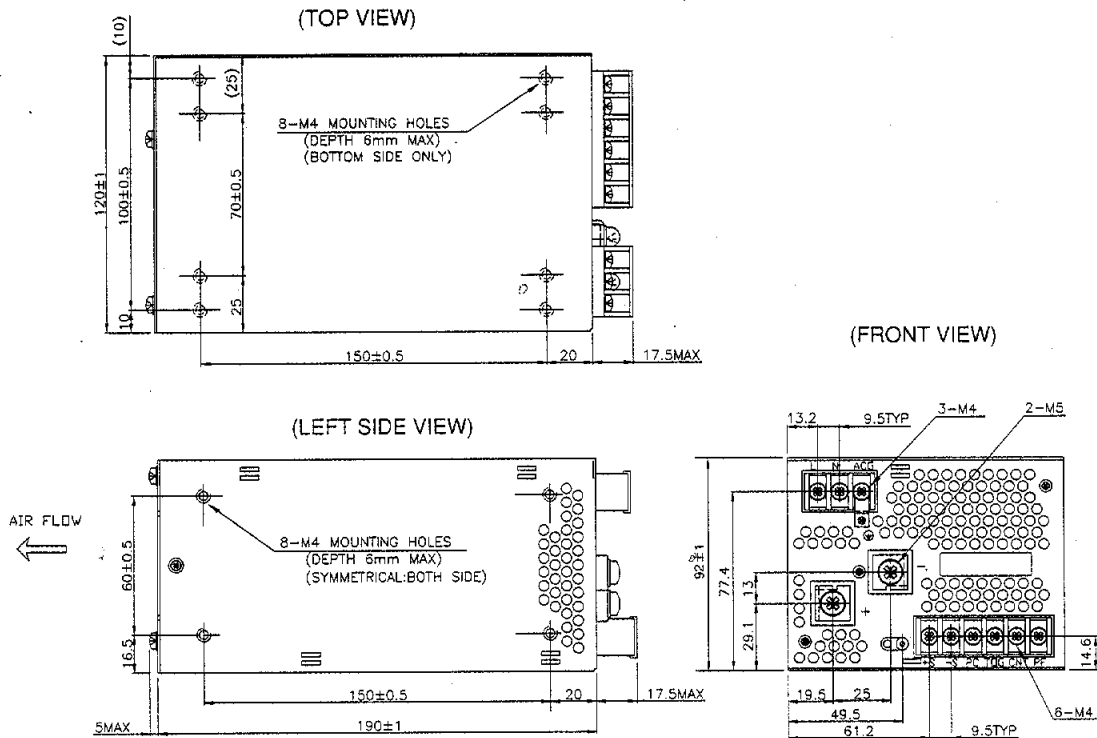
Product lineup

Model name		Nominal output voltage	Max. output current	Max. DC output power	UL	CSA	EN
EWS300P	EWS300P-2	2V	60A	120W	○	○	○
	EWS300P-3	3.3V	60A	198W	○	○	○
	EWS300P-5	5V	60A	300W	○	○	○
	EWS300P-12	12V	27A	324W	○	○	○
	EWS300P-15	15V	22A	330W	○	○	○
	EWS300P-24	24V	14A	336W	○	○	○
	EWS300P-28	28V	12A	336W	○	○	○
EWS600P	EWS300P-48	48V	7A	336W	○	○	○
	EWS600P-2	2V	120A	240W	○	○	○
	EWS600P-3	3.3V	120A	396W	○	○	○
	EWS600P-5	5V	120A	600W	○	○	○
	EWS600P-12	12V	53A	636W	○	○	○
	EWS600P-15	15V	43A	645W	○	○	○
	EWS600P-18	18V	35A	630W	○	○	○
	EWS600P-24	24V	27A	648W	○	○	○
	EWS600P-28	28V	23A	644W	○	○	○
	EWS600P-48	48V	13A	624W	○	○	○

- Request customer specification for further details of specifications, outline, characteristics, etc.
- Read the instruction manual before usage.
- Contact us about delivery before ordering.

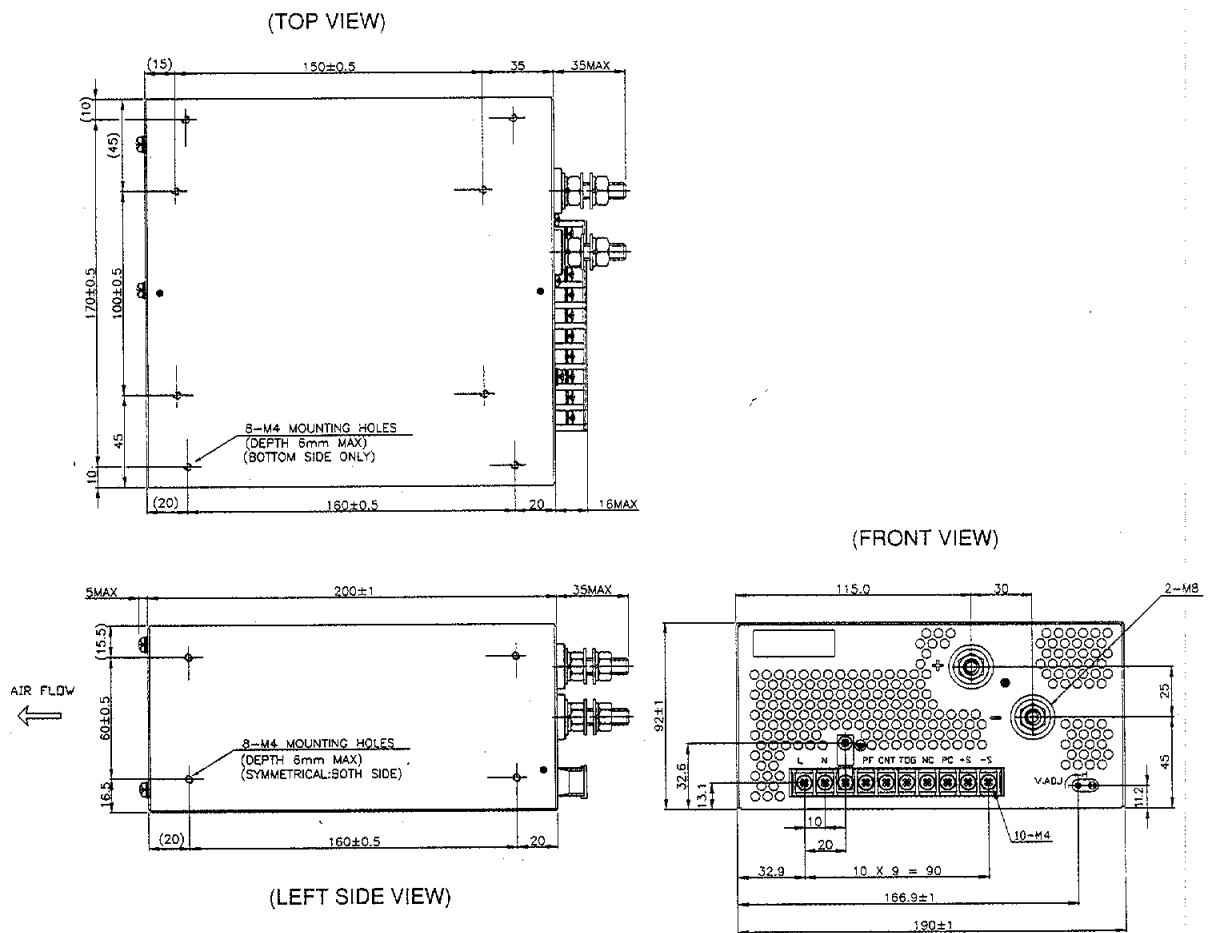
○ : Safety standard approved
△ : Conforms to safety standard

■ EWS300P



(Unit: mm)

■ EWS600P



(Unit: mm)

Mouser Electronics

Authorized Distributor

Click to View Pricing, Inventory, Delivery & Lifecycle Information:

TDK-Lambda:

[EWS100P-12](#) [EWS100P-28](#) [EWS100P-48](#) [EWS100P-5](#) [EWS150P-12](#) [EWS150P-15](#) [EWS150P-24](#) [EWS150P-28](#)
[EWS150P-48](#) [EWS300P-12](#) [EWS300P-15](#) [EWS300P-2](#) [EWS300P-24](#) [EWS300P-3.3](#) [EWS300P-5](#) [EWS600P-12](#)
[EWS600P-15](#) [EWS600P-2](#) [EWS600P-24](#) [EWS600P-28](#) [EWS600P-3.3](#) [EWS600P-48](#) [EWS600P-5](#) [EWS150P-3.3](#)
[EWS100P-15](#) [EWS100P-24](#) [EWS150P-5](#) [EWS300P-48](#) [EWS100P-3.3](#) [EWS300P-28](#) [EWS100P15](#) [EWS100P28](#)
[EWS100P3.3](#) [EWS100P48](#) [EWS100P5](#) [EWS150P15](#) [EWS150P24](#) [EWS150P28](#) [EWS150P3.3](#) [EWS150P48](#)
[EWS150P5](#) [EWS300P12](#) [EWS300P15](#) [EWS300P2](#) [EWS300P28](#) [EWS300P3.3](#) [EWS300P48](#) [EWS300P5](#)
[EWS600P15](#) [EWS600P28](#) [EWS600P3.3](#) [EWS600P48](#) [EWS600P5](#)