

RSEV SERIES

Compact Single-Phase EMC Filter That Offers Improved Wiring Workability



EMC filter

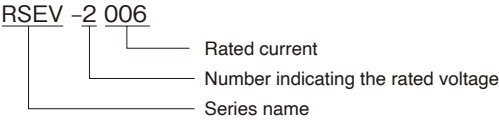
FEATURES

- Easy to install, all screws are self-up structure
- Terminal block screw and product cover are unified
- The attachment for DIN rail is available (optional accessory)
Part number: DIN-RSEV

SAFETY STANDARDS

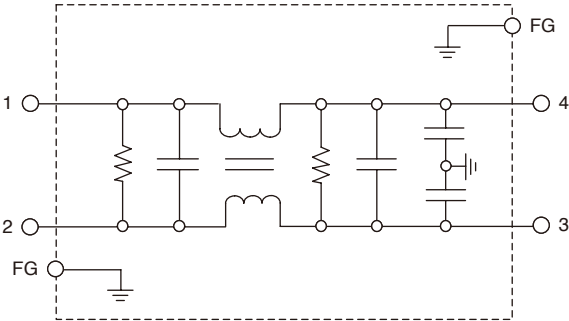
UL1283
CSA C22.2 No.8 (cUL)
EN60939-3 (ENEC15)

PRODUCT IDENTIFICATION



CONFORMITY TO RoHS Directive

CIRCUIT DIAGRAM

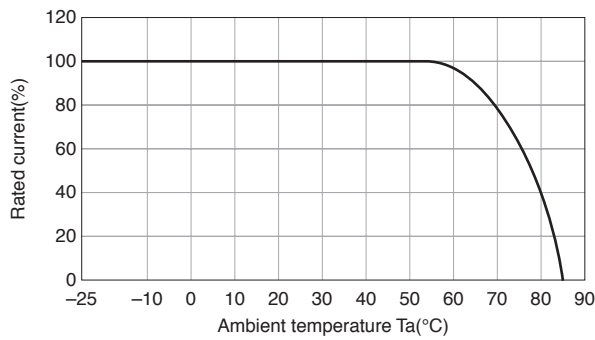


ELECTRICAL CHARACTERISTICS

Part No.	Rated voltage (AC/DC)	Rated current (AC/DC)	Withstand voltage	Insulation resistance	Leakage current	Operating temperature range	With derating over	DC resistance (mΩ)	Attenuation frequency range (MHz)		Weight (g)
									Common mode	Differential mode	
									at 25dB	at 25dB	
RSEV-2006	250V	6A	AC 2500V 60s [line - earth]	100MΩ min. [DC500V/ 1min]	1mA max. [250V/60Hz]	-25 to +85°C	+55°C	110 max.	0.1 to 30	0.2 to 30	150
RSEV-2010		10A						40 max.	0.2 to 30	0.2 to 30	150
RSEV-2016		16A						20 max.	0.6 to 30	0.3 to 30	150
RSEV-2020		20A						10 max.	0.8 to 30	0.4 to 30	150
RSEV-2030		30A						6 max.	2 to 30	0.5 to 30	150

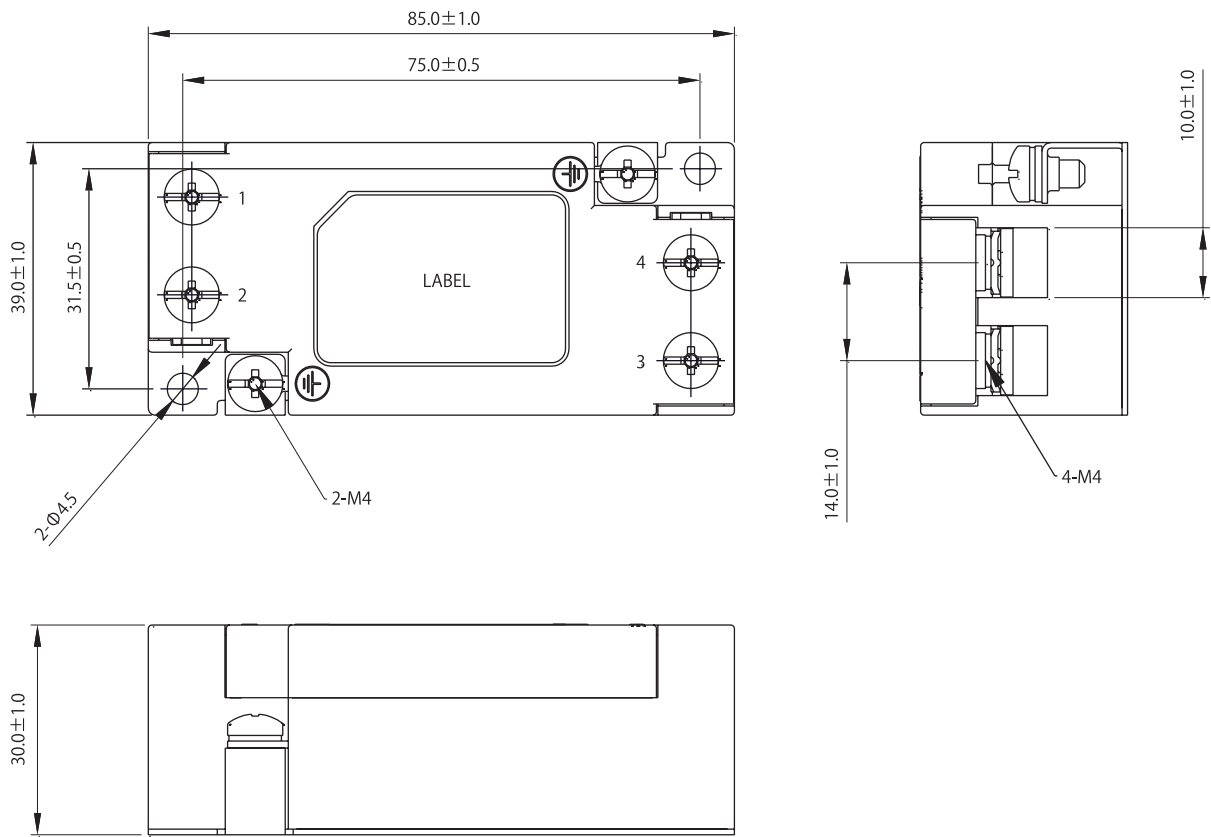
EMC filter

DERATING GRAPH



RSEV

MECHANICAL

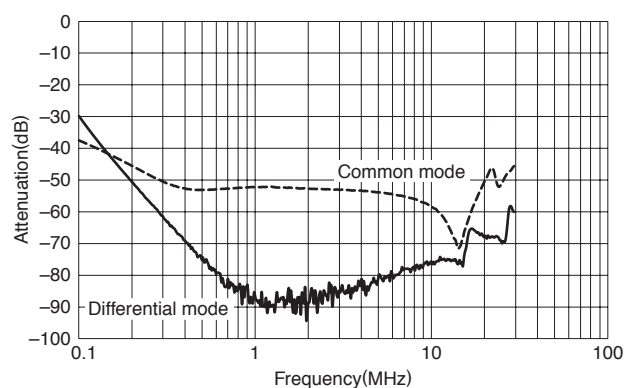


Dimensions in mm

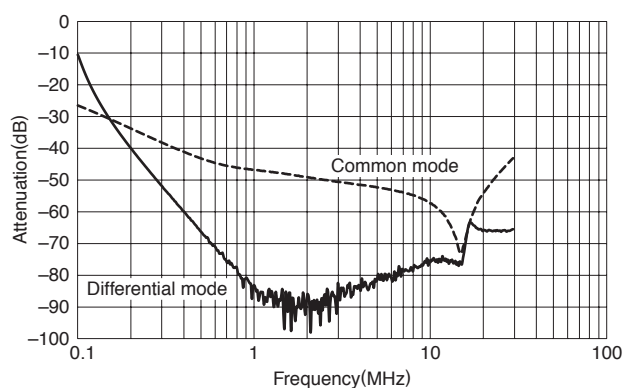
• All specifications are subject to change without notice.

■ ATTENUATION vs. FREQUENCY CHARACTERISTICS

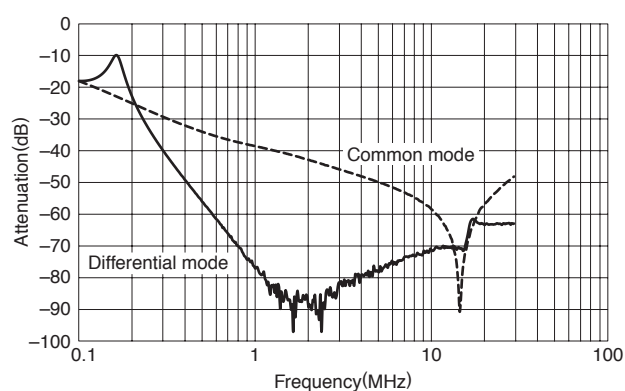
RSEV-2006



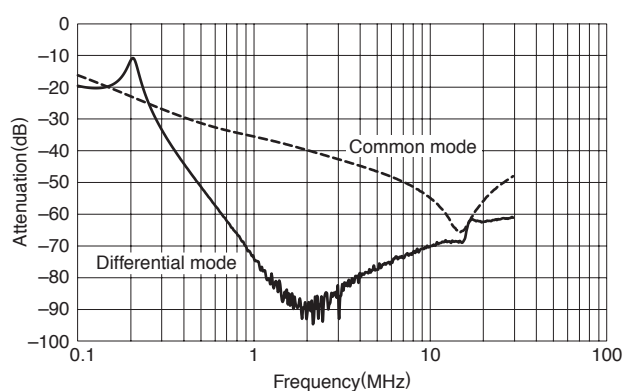
RSEV-2010



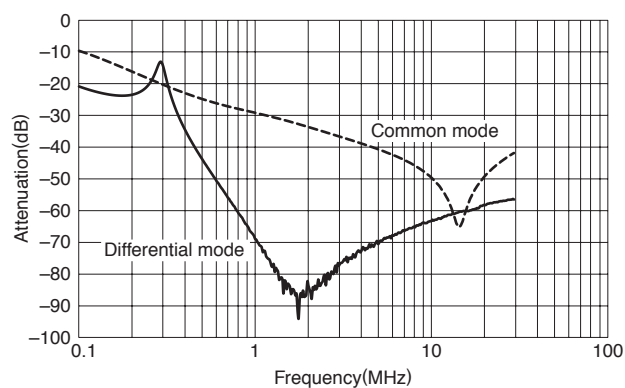
RSEV-2016



RSEV-2020



RSEV-2030



Mouser Electronics

Authorized Distributor

Click to View Pricing, Inventory, Delivery & Lifecycle Information:

[TDK-Lambda:](#)

[RSEV-2006](#) [RSEV-2010](#) [RSEV-2016](#) [RSEV-2020](#) [RSEV-2030](#)