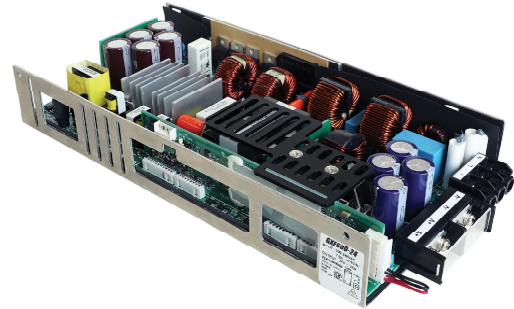


Single output 600W Programmable Medical and ITE Power Supplies

Features

- ◆ Convection Cooled
- ◆ Up to 95% Efficient
- ◆ RS-485 Read-Write Communication (Modbus RTU protocol)
- ◆ Constant Voltage & Constant Current Modes
- ◆ Monitoring & Programming Functions
- ◆ Digital or Analog Programming
- ◆ Seven Year Warranty

Key Market Segments & Applications



Specifications

Model		GXE600-24	GXE600-48
AC Input Voltage range ⁽¹⁾	VAC	85 - 265VAC (47 - 63Hz). Withstands 300VAC for 5s	
Inrush Current (100 / 200VAC)	A	40 / 40A	
Power Factor (100 / 200VAC)	-	Meets EN61000-3-2 (0.99 / 0.95)	
Input Current (115/230VAC) (Typ)	A	6.1 / 3.1A	
Nominal Output Voltage	VDC	24V	48V
Maximum Output Current	A	25A	12.5A
Output Voltage Range (Manual Adjust)	VDC	19.2 - 28.8V	38.4 - 57.6V
Output Voltage Range (Via Programming) ⁽²⁾	VDC	4.8 - 28.8V	9.6 - 57.6V
Current Limit Set Point (Via Programming) ⁽²⁾	A	5 - 28.8A	2.5 - 14.4A
Temperature Coefficient	%/°C	<0.02%/°C	
Regulation	-	See Model Selector	
Overcurrent Protection ⁽³⁾	-	>28.8A	>14.4A
Overvoltage Protection ⁽³⁾	V	28.8 - 31.2V	57.6 - 62.4V
Hold Up Time (Typ at 100% load)	ms	20ms	
Leakage Current (max)	mA	<0.3mA	
Standby Voltage Vsb)	-	4.8V - 5.2V 1A	
Remote Sense	-	Yes	
Remote On/Off	-	Isolated opto-coupler. Unit off when current is flowing through the opto diode	
Power Fail Signal	-	Signal is high when the output voltage drops due to AC loss or OCP, OVP, OTP	
AC Fail Signal	-	Signal goes high when the AC input is not present	
Parallel Operation	-	Yes, up to five units	
Operating Temperature (-40°C start up)	°C	Convection: -20 to +70°C, derate linearly to 50% load from 50 to 70°C ⁽⁴⁾	
Storage Temperature	°C	-40 to +85°C	
Operating Humidity (non condensing)	%RH	20 - 90%RH	
Storage Humidity (non condensing)	%RH	10 - 90%RH	
Cooling	-	Convection or forced air cooling	
Withstand Voltage	VAC	Input to Ground 2kVAC (1xMOPP), Input to Output 4kVAC (2xMOPP), Output to Ground 1.5kVAC (1xMOPP), Output to Signals 100VAC for 1 min.	
Isolation Resistance	MΩ	>100MΩ at 25°C & 70%RH, Output to Ground 500VDC	
Vibration (non operating)	-	10 - 55Hz: 19.6m/s ² (sweep 1 min) X, Y, Z for 1 hour /HD version: Designed to meet MIL-STD-810G 514.7 Category 4, 10	
Shock	-	< 196.1m/s ² /HD version: Designed to meet MIL-STD-810G 516.7 Procedure I, VI	
Safety Agency Certifications	-	IEC/UL/CSA/EN60950-1, IEC/UL/CSA/EN62368-1, IEC/ES/CSA/EN60601-1, IEC/EN62477-1 (OVC III), CE Mark	
Line Dips	-	SEMI-F47 (200VAC input)	
Conducted & Radiated EMI	-	EN55011 / EN55032-B, FCC Class B, VCCI-B	
Immunity	-	IEC61000-4-2, -3, -4, -5, -6, -8, -11, IEC61000-6-2, IEC60601-1-2 Ed 4	
Weight (Typ)	g	1300	
Size (WxHxD)	mm	127 x 41 x 254mm	
MTBF - Telcordia SR-332 issue 3*	Hours	511,677 hours	
Warranty	Yrs	Seven Years	

(1) 85VAC: 360W, 100 to <170VAC: 500W, 170V to 265VAC: 600W (Convection cooled). 600W when forced air is applied (see installation manual)

(2) Using RS-485 communications or external 1-6V voltage source. See installation manual for details

(3) Overcurrent & Overvoltage limits and recovery modes can be set using the RS-485 communications

(4) See installation manual for full derating curves

*24V output model, 25°C ambient, full load, 230VAC input

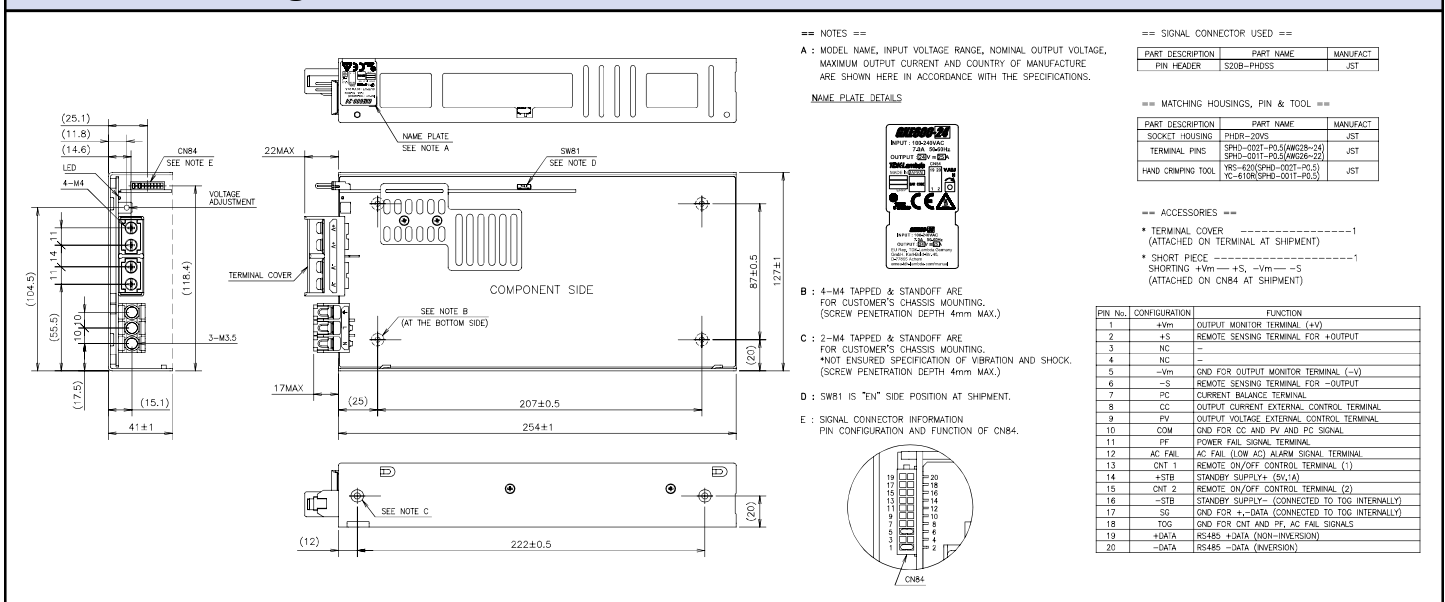
Model Selector

Model	Output Voltage (V)	Max Output Power (W)	Load Reg (mV)	Line Reg (mV)	Ripple Noise (mV)	Efficiency (typ) % 115/230 VAC
GXE600-24	24	600	144	96	150	92 / 95
GXE600-48	48	600	288	192	350	92 / 95

Monitoring and Programming Functions

Function	Digital (RS-485) Control	Analog Control
Output Voltage Monitor	Read back	No
Output Current Monitor	Read back	No
Output Voltage Programming	Adjustable	Adjustable, use a 1-6V external voltage source
Output Current Programming	Adjustable	Adjustable, use a 1-6V external voltage source
Over Voltage Protection Set Point	Adjustable	Fixed
Over Voltage Recovery	Auto-recovery or manual settings	Cycle AC input or use the remote on/off
Over Current Set Point	Adjustable	Fixed
Over Current Recovery	Auto recovery: Constant current, hiccup or foldback Latching: Constant current or foldback	Constant current, auto-recovery
Over Temperature Recovery	Cycle AC input or use the remote on/off	Cycle AC input or use the remote on/off
Remote On/Off	Yes, enable or inhibit type	Yes, enable or inhibit type
Internal Temperature Monitoring	Yes, -20 to +100°C	No
Operating Run Time Log	Records more than 20 years of data	No
Remaining Electrolytic Capacitor Life	Indicates hours left	No
Alarm History	OCP, OVP, OTP, remote on/off, system error	No
Slew Rate (Rise-time) Control	Voltage and current	No
Communication Configuration	ID, Baud Rate, Parity	Not applicable
Product Information	Model #, serial #, lot #, firmware version	Not applicable
Power Fail Signal Threshold	Adjustable for either output voltage or current	Fixed (voltage only)

Outline Drawing



Options

Suffix	Description
Blank	U channel chassis
/A	U channel chassis with cover
/HD	U channel chassis, ruggedized & pcb coating
/HDA	U channel chassis with cover, ruggedized & pcb coating

For Additional Information, please visit
<https://product.tdk.com/info/en/products/power/index.html>



Mouser Electronics

Authorized Distributor

Click to View Pricing, Inventory, Delivery & Lifecycle Information:

[TDK-Lambda:](#)

[GXE600-48](#) [GXE600-24/HD](#) [GXE600-24/A](#) [GXE600-48/HD](#)