



Features

- (1) Wide band: High attenuation.
Band wide: 150kHz ~ 30MHz, 2 stage filter
- (2) Block terminal with cover type
Simple wire connection, high safety by cover
- (3) Compact, low profile package
Low profile metal case, 10A type: 26mm

Safety standard

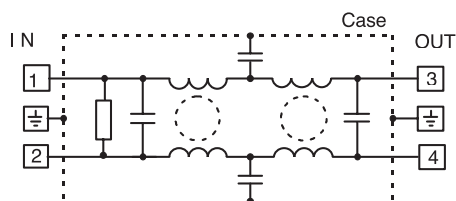
UL1283, CSA Std. C22. 2 No. 8
VDE0565 Teil 3, Teil 3A2
EN133200
(VDE0565 will expire on July 23, 2003.)

Specifications

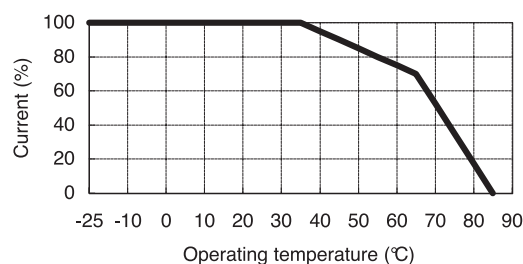
Items	Model	MB1206	MB1210	MB1216	MB1220	MB1236
1	Rated voltage (AC, DC)	250V				
2	Rated current (AC, DC) (Note 1)	6A	10A	16A	20A	36A
3	Test voltage (terminal to case, AC 1 minute)	2500V (20mA) at 25°C, 70% RH				
4	Isolation resistance (terminal to case, 500VDC)	100MΩ min. at 25°C, 70% RH				
5	Leakage current	125V, 60Hz	0.5mA max.			
		250V, 60Hz	1mA max.			
6	DC resistance	140mΩ max.	50mΩ max.	34mΩ max.	20mΩ max.	9mΩ max.
7	Temperature rise	40°C max.				
8	Operating temperature	-25 ~ +85°C				
9	Operating humidity	30% ~ 95% RH (No dewdrop)				
10	Storage temperature	-40 ~ +85°C				
11	Storage humidity	10% ~ 95% RH (No dewdrop)				
12	Vibration	Sweep: 10 ~ 55 ~ 10Hz (for 1 minute), Amplitude: 1.5mm X, Y and Z axes for 2 hours each				
13	Safety standard	Approved by UL1283, CSA C22.2 No. 8 (C-UL), VDE0565 Teil3, Teil3A2 and EN133200 (VDE)				
14	Weight (typ)	190g	220g	310g	530g	660g

(Note) : Value at Ta ≤ 35°C. Refer to the derating curve shown below at Ta > 35°C.

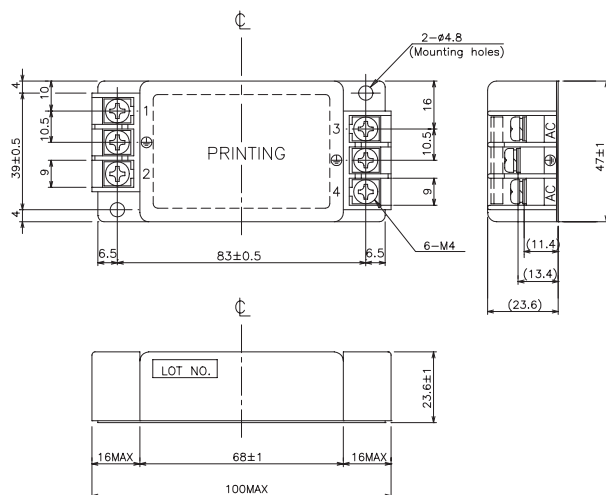
Circuit



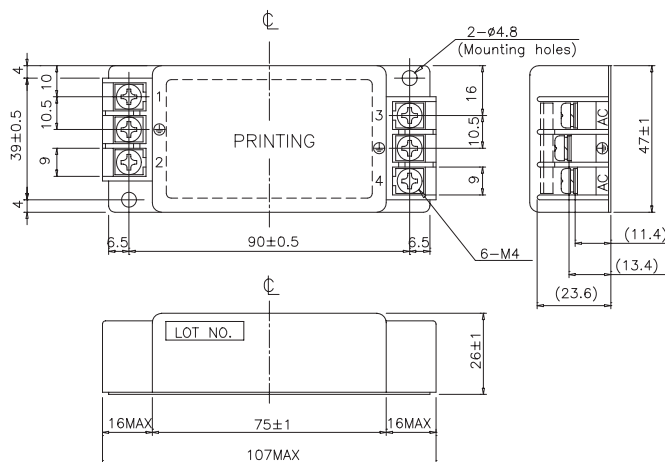
Derating



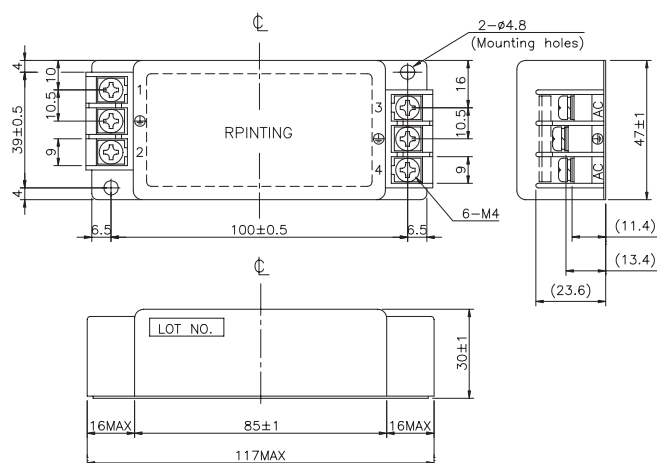
MB1206



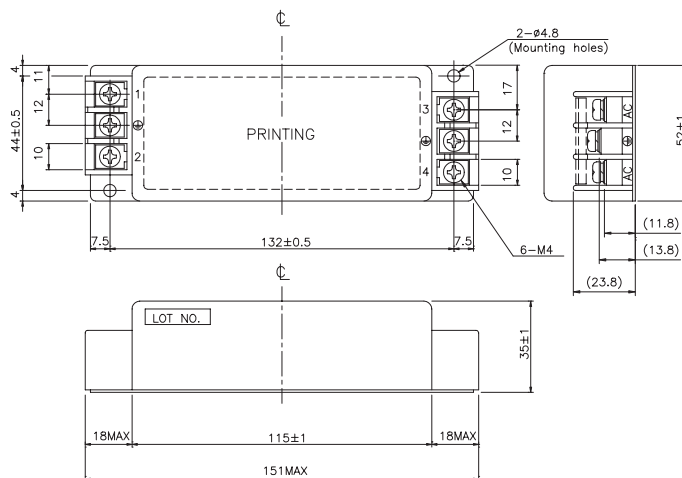
MB1210



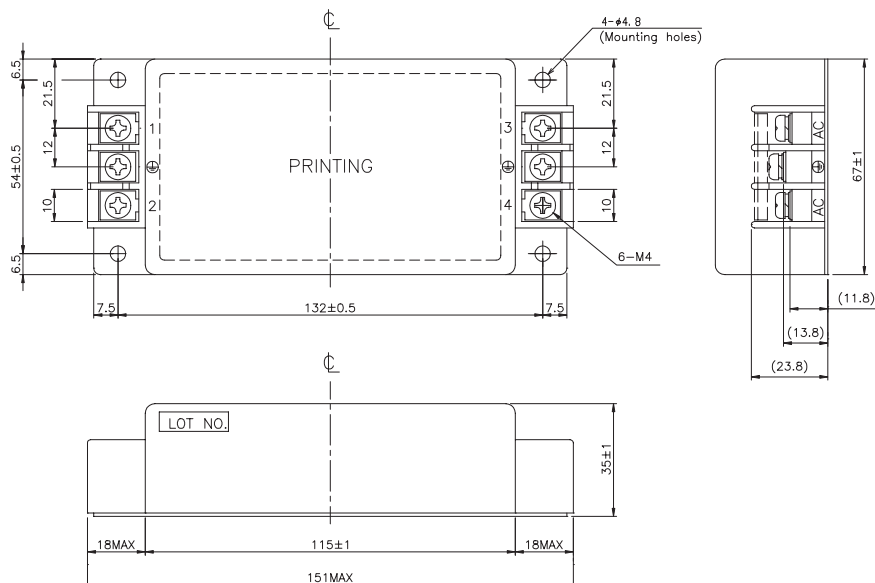
■ MB1216



■ MB1220



■ MB1236



Case: Metal

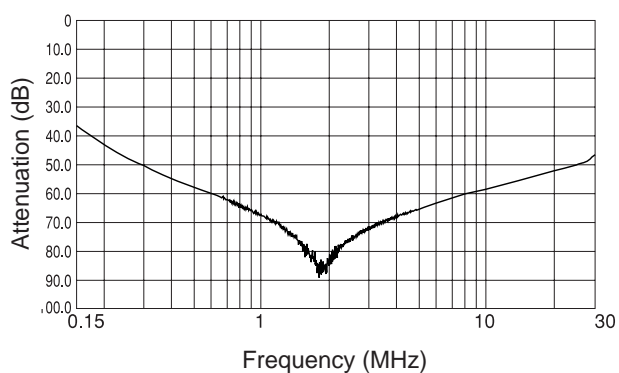
(Unit: mm)

CHARACTERISTICS

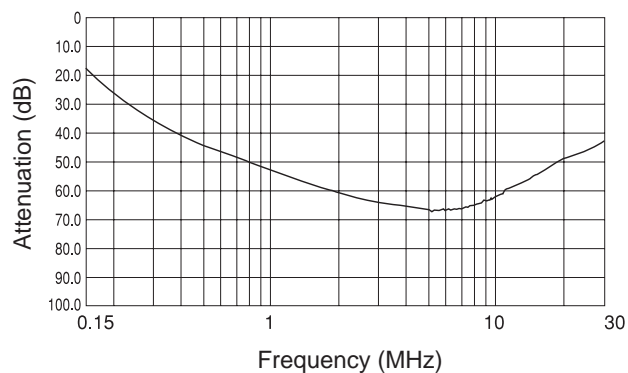
■ Typical Insertion Loss

(1) Asymmetrical

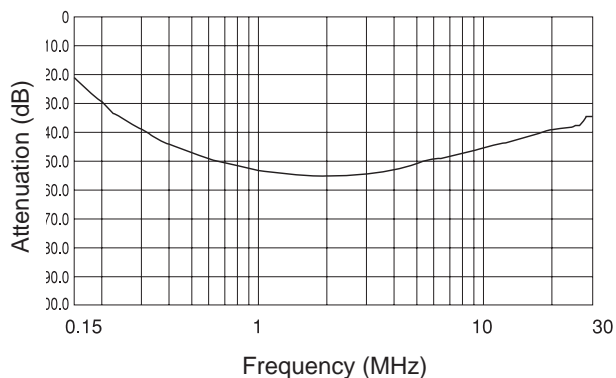
MB1206



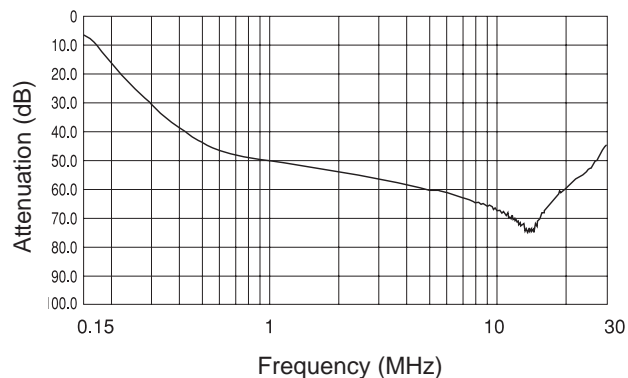
MB1210



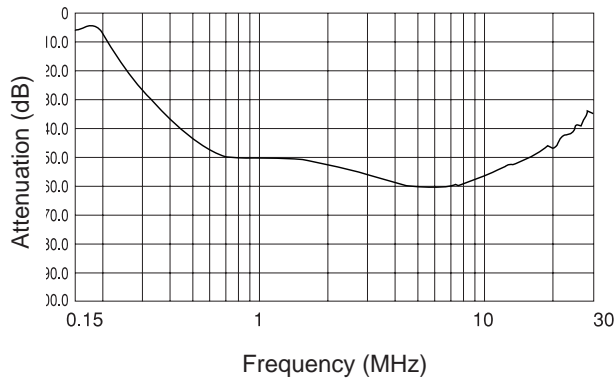
MB1216



MB1220



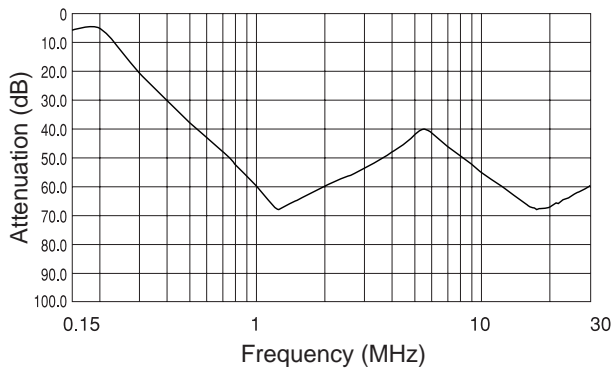
MB1236



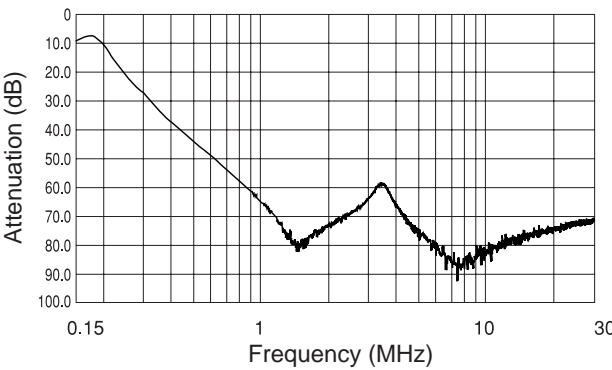
CHARACTERISTICS

■ Typical Insertion Loss
(2) Symmetrical

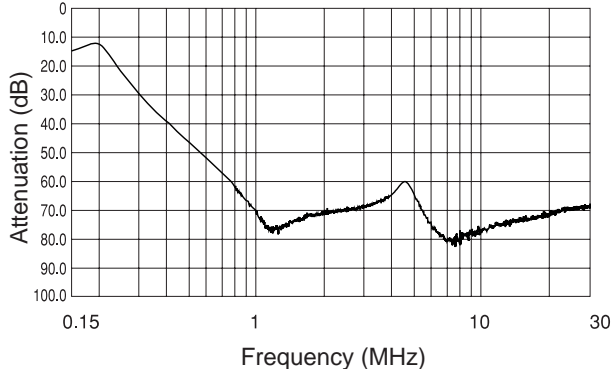
MB1206



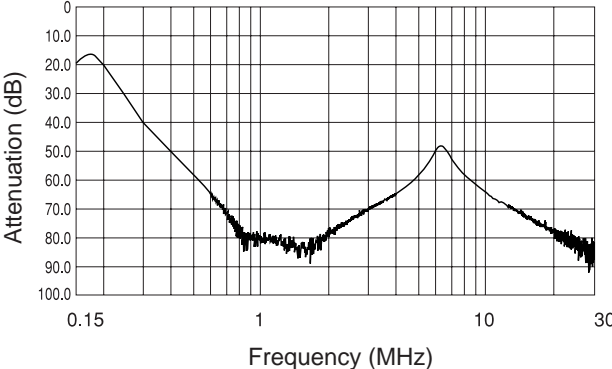
MB1210



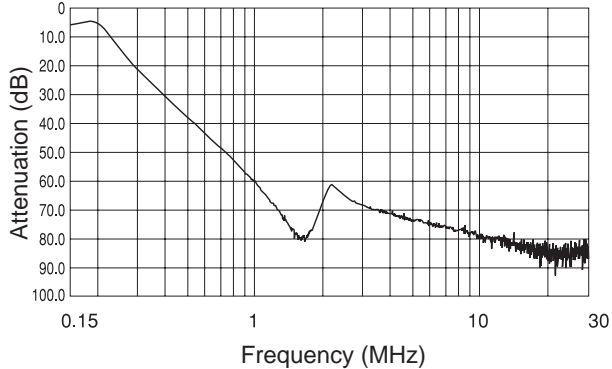
MB1216



MB1220



MB1236



Mouser Electronics

Authorized Distributor

Click to View Pricing, Inventory, Delivery & Lifecycle Information:

[TDK-Lambda:](#)

[MB1206](#) [MB1220](#) [MB1236](#) [MB1216](#) [MB1210](#)