

Power Supplies

DC to AC Inverters

For 2 Bulb, 7W Diming

CXA Series CXA-P1212-VJL

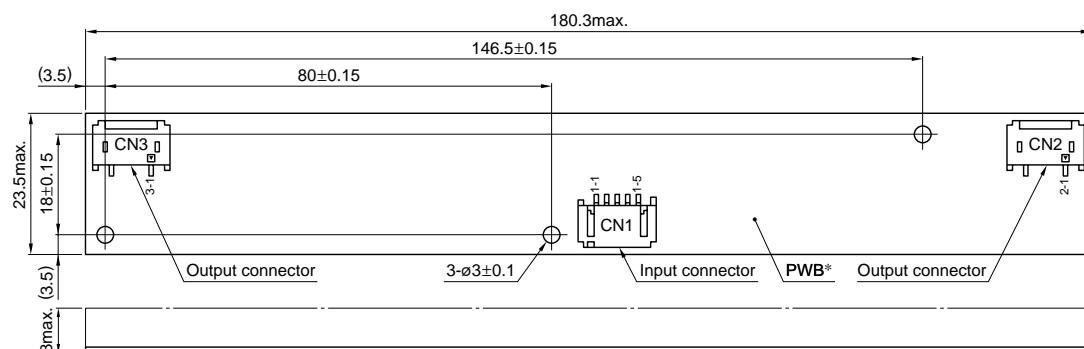
FEATURES

- The CXA-P1212-VJL is an inverter for 2-cold cathode fluorescent lamps and features a built-in dimmer.
- Because they employ advanced output current control, fluctuations in input voltage, load, and distributed capacitance have virtually no effect on brightness.
- Output open and short circuit conditions result in no damage, heat generation, or other difficulties.
- Built-in fuse assures a high degree of safety.
- The bottom of the board has a flat structure that facilitates insulation.
- Ideal for 10- to 14-inch class LCD panels.

TEMPERATURE AND HUMIDITY RANGES

Temperature range	Operating	0 to +70°C
	Storage	-30 to +85°C
Humidity range	95(%)RH max. [Maximum wet-bulb temperature 38°C]	

SHAPES AND DIMENSIONS



*Substrate(PWB: Printed wiring board): Inflammable material UL94V-0 t=1mm

Weight: 21g typ.

Dimensions in mm

Terminal No.	Connector manufacturer and type name	No. of connector pin
CN1	Japan Solderless Terminal Co., Ltd. S5B-PH-SM3	5
CN2	Japan Solderless Terminal Co., Ltd. SM02(8.0)B-BHS-1	3
CN3	Japan Solderless Terminal Co., Ltd. SM02(8.0)B-BHS-1	3

TERMINAL NUMBERS AND FUNCTIONS

CN1

Terminal No.	Functions
CN1-1	+Vin
CN1-2	-Vin(GND)
CN1-3	Vbr (Brightness dimmer voltage)
CN1-4	NC (Used in the internal circuits, does not use)
CN1-5	Vrmt (remote operation voltage: DC. 4.75 to 5.25V)

CN2

Terminal No.	Functions
CN2-1	lout1
CN2-2	NC
CN2-3	lout-return

CN3

Terminal No.	Functions
CN3-1	lout2
CN3-2	NC
CN3-3	lout-return

Power Supplies

DC to AC Inverters

For 2 Bulb, 7W Diming

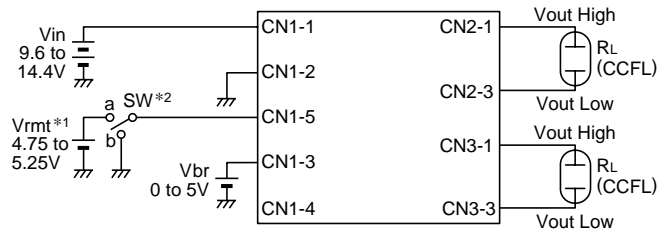
CXA Series CXA-P1212-VJL

ELECTRICAL CHARACTERISTICS

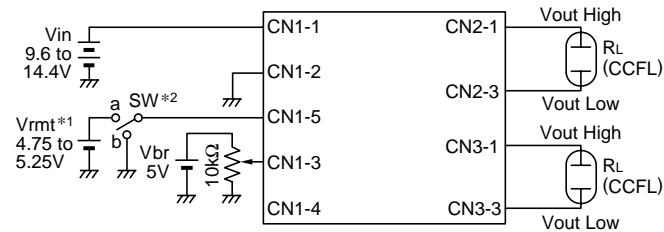
Items		Specifications			Conditions				Brightness	
		min.	typ.	max.	Vin(V)	Vbright(V)	Ta(°C)	RL(kΩ)		
Output current	Irms(mA)	lout1	5.3	6	6.7	12±2.4	0	0 to +70	76 to 114	Maximum
		lout2	5.3	6	6.7	12±2.4	0	0 to +70	76 to 114	Maximum
		lout1	5.5	6	6.5	12±1.2	0	0 to +70	95	Maximum
		lout2	5.5	6	6.5	12±1.2	0	0 to +70	95	Maximum
		lout1	1.7	2	2.4	12±1.2	3.4	0 to +70	250	Minimum
		lout2	1.7	2	2.4	12±1.2	3.4	0 to +70	250	Minimum
Input current	Idc(A)	lin	—	0.76	1.3	12±2.4	0 to 3.4	0 to +70	76 to 114	
Oscillation frequency	(kHz)	f	52	58	64	12±2.4	0	0 to +70	95	
Open circuit output voltage	Erms(V)	Vopen	1400	1500	2000	12±2.4	0	0 to +70	∞	

TYPICAL CONNECTIONS

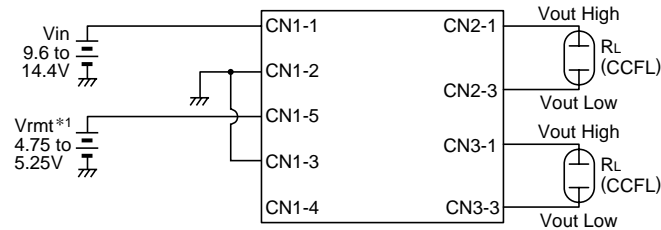
EXAMPLE OF VOLTAGE DIMMER CONTROL



EXAMPLE OF POTENTIOMETER DIMMER CONTROL



NO DIMMER CONTROL

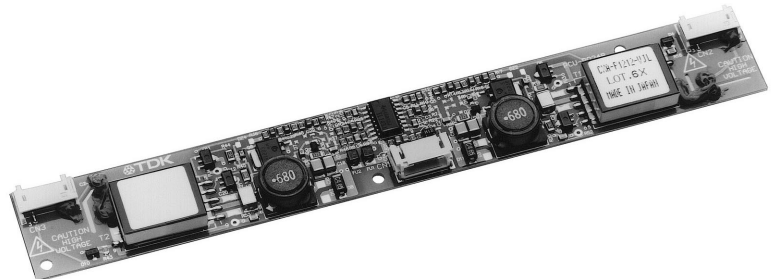
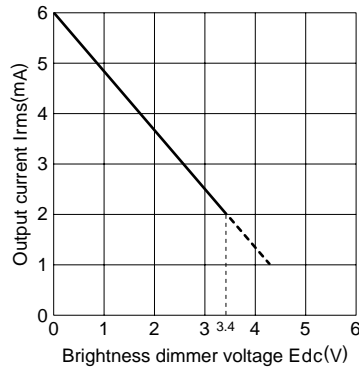


*1 Vbrmt (remote voltage) shall be ON after Vin was ON.

*2 SW a: ON, b: OFF

TYPICAL ELECTRICAL CHARACTERISTICS

OUTPUT CURRENT vs. BRIGHTNESS DIMMER VOLTAGE



Mouser Electronics

Authorized Distributor

Click to View Pricing, Inventory, Delivery & Lifecycle Information:

[TDK:](#)

[CXA-P1212-VJL](#)