

TWO PIN DIP

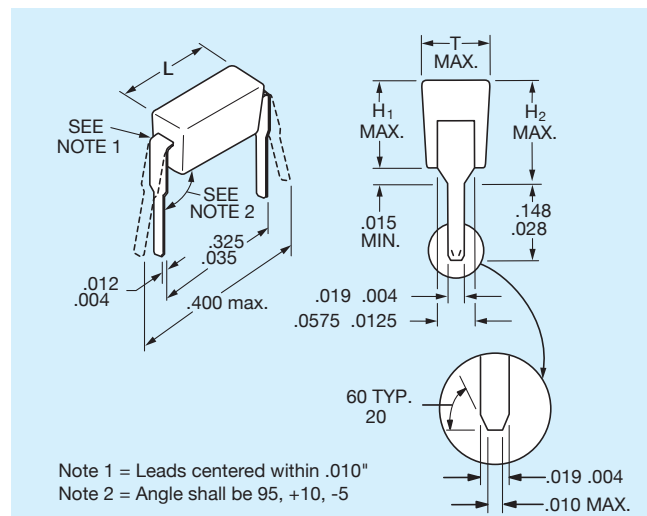
DIPGuard®

GENERAL INFORMATION

MD Series

Temperature Coefficients: C0G (NP0), X7R, Z5U,
50, 100 Volts

**For established reliability DIPGuards see
MIL-PRF-39014 section on pages 60 to 65.**



HOW TO ORDER

MD01

5

E

104

M

A

B

Style
MD01
CKR22*
CKS22**
MD02
CKR23*
CKS23*
MD03
CKR24*
CKS24**

Voltage
5 = 50V
1 = 100V

Temperature Coefficient
A = C0G (NP0)
C = X7R
E = Z5U

Capacitance
First two digits are the significant figures of capacitance. Third digit indicates the additional number of zeros. For example, order 100,000 pF as 104.

Capacitance Tolerance
C0G (NP0): F = ±1%
J = ±5%
K = ±10%
X7R: J = ±5%
K = ±10%
M = ±20%
Z5U: M = ±20%
Z = +80%
-20%

Failure Rate
A = Not Applicable

Assembly Method
A = Hand Assembled
B = Automated Assembly

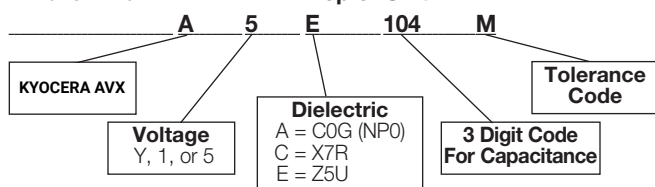
* Reference pages 58 to 63.
** Reference page 79.

Not RoHS Compliant

MARKING

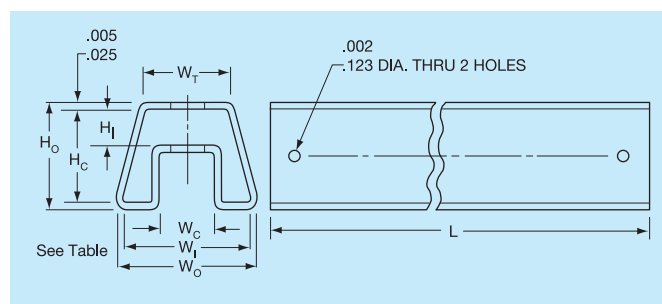
Part Number Example
MD015 E 104MAB

Top of Unit:



PACKAGING REQUIREMENTS

Standard Packaging: MD01/MD02: 200 pieces per slide pack.
MD03: 200 pieces per vial.



Slide Package Dimensions

	MD01	MD02	MD03*
(HO) Overall Height	.400 ref.	.430 ref.	.545 ref.
(HC) Channel Height	.141 ± .006	.171 ± .006	.295 ± .010
(HI) Inside Height	.350	.380	.495
(WO) Overall Width	.540 ref.	.540 ref.	.600 ref.
(WI) Inside Width	.490	.490	.550
(WC) Channel Width	.210	.210	.170
(WT) Top Width	.350	.310	.300
(L) Length	20.073 ± .06	20.073 ± .06	20.073 ± .06

*Optional

TWO PIN DIP

DIPGuard®



SIZE SPECIFICATIONS

Dimensions: Millimeters (Inches)

Style	Length (L)	Height (H ₁)	Height (H ₂)	Thickness
MD01	6.60 (.260 ± .020)	3.43 (.135 max.)	4.45 (.175 max.)	2.54 (.098 max.)
MD02	6.60 (.260 ± .020)	4.19 (.162 max.)	5.08 (.195 max.)	2.54 (.098 max.)
MD03	6.60 (.260 ± .020)	7.37 (.290 max.)	8.13 (.320 max.)	2.54 (.098 max.)

MILITARY CROSS REFERENCE GUIDE

Note: For CKR22/23/24, see MIL-PRF-39014 section in the Military Section pages 58 thru 63.

For CKS22/23/24 see MIL-PRF-123 section in the Military Section page 79.

Dimensions: Millimeters (Inches)

Style	MIL-PRF-39014	MIL-PRF-123	Length (L)	Height (H ₁)	Height (H ₂)	Thickness
MD01	CKR22	CKS22	6.60 (.260 ± .020)	3.43 (.135 max.)	4.45 (.175 max.)	2.54 (.092 ± .006)
MD02	CKR23	CKS23	6.60 (.260 ± .020)	4.19 (.162 max.)	5.08 (.195 max.)	2.54 (.092 ± .006)
MD03	CKR24	CKS24	6.60 (.260 ± .020)	7.37 (.290 max.)	8.13 (.320 max.)	2.54 (.092 ± .006)

CAPACITANCE SPECIFICATIONS

COG (NP0)

EIA Characteristic Style		COG (NP0)	
Cap. in. pF		MD01	
		WVDC	
		100	50
10	MD015A100KAB		
15	MD015A150KAB		
22	MD015A220KAB		
33	MD015A330KAB		
47	MD015A470KAB		
68	MD015A680KAB		
100	MD015A101KAB		
150	MD015A151KAB		
220	MD015A221KAB		
330	MD015A331KAB		
470	MD015A471KAB		
680	MD015A681KAB		
1000	MD015A102KAB		
1500	MD015A152KAB		
2200	MD015A222KAB		
3300	MD015A332KAB		
Style		MD02	
Cap. in. pF		WVDC	
		100	50
4700	MD025A472KAB		
6800	MD025A682KAB		
10000	MD025A103KAB		

For other voltages and tolerances see Part No. Codes.

X7R

EIA Characteristic Style		X7R	
Cap. in. pF		MD01	
		WVDC	
		100	50
220	MD015C221KAB		
330	MD015C331KAB		
470	MD015C471KAB		
680	MD015C681KAB		
1000	MD015C102KAB		
1500	MD015C152KAB		
2200	MD015C222KAB		
3300	MD015C332KAB		
4700	MD015C472KAB		
6800	MD015C682KAB		
10,000	MD011C103KAB		
15,000	MD015C153KAB		
22,000	MD015C223KAB		
33,000	MD015C333KAB		
47,000	MD015C473KAB		
68,000	MD015C683KAB		
100,000	MD015C104KAB		
Style		MD02	
Cap. in. pF		WVDC	
		100	50
150,000	MD025C154KAB		
220,000	MD025C224KAB		
Style		MD03	
Cap. in. pF		WVDC	
		100	50
330,000	MD035C334KAA		
470,000	MD035C474KAA		
680,000	MD035C684KAA		
1,000,000	MD035C105KAA		
1,500,000	MD035C155KAA		
2,000,000	MD035C205KAA		

For other voltages and tolerances see Part No. Codes.

Z5U

EIA Characteristic Style		X5U	
Cap. in. pF		MD01	
		WVDC	
		100	50
10,000	MD015E103ZAB		
15,000	MD015E153ZAB		
22,000	MD015E223ZAB		
33,000	MD015E333ZAB		
47,000	MD015E473ZAB		
68,000	MD015E683ZAB		
100,000	MD015E104ZAB		
150,000	MD015E154ZAB		
220,000	MD015E224ZAB		
330,000	MD015E334ZAB		
Style		MD02	
Cap. in. pF		WVDC	
		100	50
470,000	MD025E474ZAB		
Style		MD03	
Cap. in. pF		WVDC	
		100	50
680,000	MD035E684ZAA		
1,000,000	MD035E105ZAA		

For other voltages and tolerances see Part No. Codes.

*Other capacitance values available upon special request.

■ = Industry preferred values

Mouser Electronics

Authorized Distributor

Click to View Pricing, Inventory, Delivery & Lifecycle Information:

KYOCERA AVX:

MD035C334KAA	MD015C332KAB	MD025C224KAB	MD015C152KAB	MD025C154KAB	MD015A101KAB
MD025A103KAB	MD015A222KAB	MD015A100KAB	MD015C221KAB	MD015C223KAB	MD015E154ZAB
MD035C474KAA	MD015C472KAB	MD015C471KAB	MD011C103KAB	MD015C103KAB	MD015E224MAB
MD015E224ZAB	MD015E223MAB	MD015C152MAB	MD035E105MAA	MD015E334ZAB	MD015E333MAB
MD015A102KAB	MD011C332KAB	MD015E473ZAB	MD015E473MAB	MD015A220JAB	MD015A151KAB
MD015A330KAB	MD015A332KAB	MD015C333KAB	MD015C331KAB	MD011A471KAB	MD011C103JAB
MD025A103FAB	MD015A560KAB	MD015A100JAB	MD015A331JAB	MD011A100KAB	MD011A101JAB
MD011A101KAB	MD011A220KAB	MD011A221JAB	MD011A330KAB	MD011A560KAB	MD011A680KAB
MD011C152KAB	MD011C472KAB	MD011C473KAB	MD011C682KAB	MD015A100FAB	MD015A101JAB
MD015A122JAB	MD015A151JAB	MD015A222JAB	MD015A681JAB	MD015C103MAB	MD015C563KAB
MD015E223ZAB	MD021C104KAB	MD025G105ZAB	MD015A680JAB	MD015E154MAB	MD011A151JAB
MD011A151KAB	MD011A180JAB	MD011A180KAB	MD011A181KAB	MD011A201FAB	MD011A220JAB
MD011A221KAB	MD011A222JAB	MD011A222KAB	MD011A270JAB	MD011A270KAB	MD011A271JAB
MD011A330JAB	MD011A331JAB	MD011A390JAB	MD011A391JAB	MD011A391KAB	MD011A470JAB
MD011A470KAB	MD011A471JAB	MD011A560JAB	MD011A561JAB	MD011A680JAB	MD011A681JAB
MD011A681KAB	MD011A820JAB	MD011A820KAB	MD011A821GAB	MD011A821JAB	MD011A821KAB
MD011C102JAB	MD011C103MAB	MD011C122KAB	MD011C151KAB		