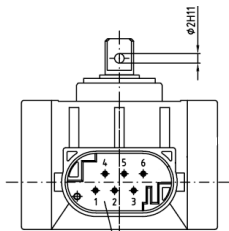


Angle sensor (Hall) 91681



Connector

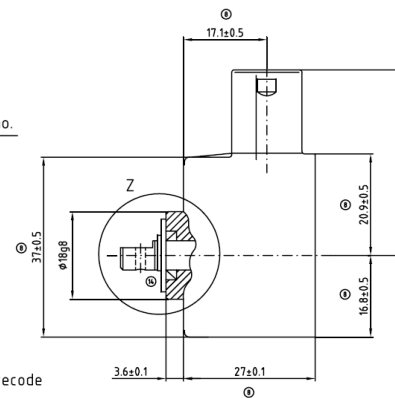
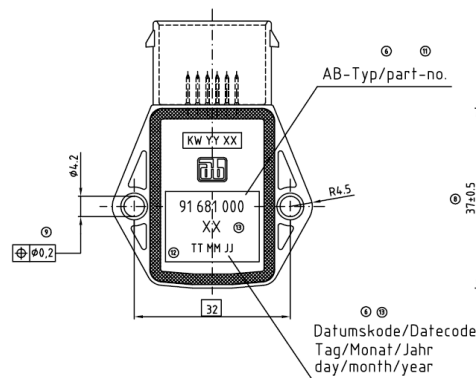


Female
connector on
request

Pinbelegung connecting chart	
Signal 1	Signal 2
1: +	6: +
2: -	5: -
4: out	3: out

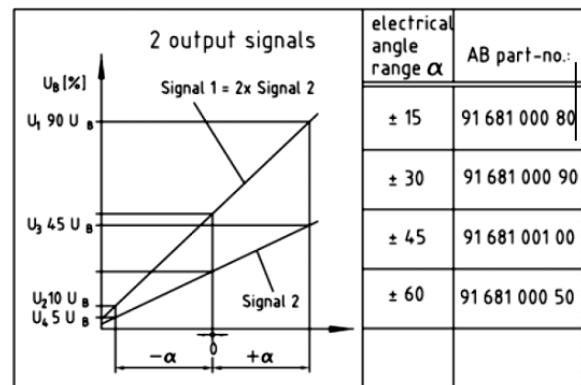
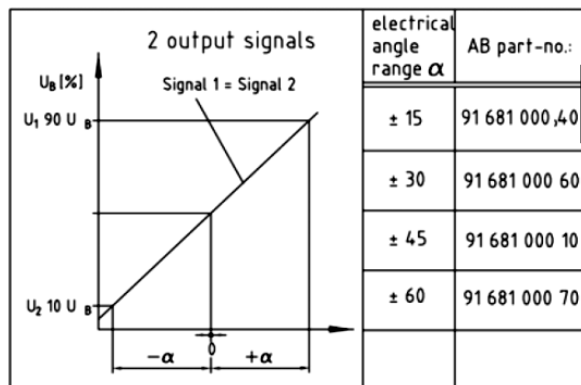
AMP-Kupplung/female connector
AMP-Nr. 114-18063-21/Kodierung A
MQS-Gegenstecker/connector housing
AMP-Nr. 1-967616-1
Steckerkontakt/terminals
AMP-Nr. 0-096 3727-2
Blindstopfen/blind plug
AMP-Nr. 0-096 7056-1
Einzelleiterabdichtung/core seal
AMP-Nr. 0-096 7067-1

Dimensions



Supply Current	5 V \pm 0.25 V 6 mA max. per signal	Temperature range	- 40 °C to + 120 °C
Output signal	Voltage interface, 2 signal	Sealing grade	Protection class according to DIN 40050-9 housing IP6K6 connector IP6K9K
Terminals Sensor	Gold plated	Vibration	Robust against higher requirements
Specification	DHWS670671-6a	Drawing	91681000 Index 14

Angle range (degrees)



Mouser Electronics

Authorized Distributor

Click to View Pricing, Inventory, Delivery & Lifecycle Information:

[KYOCERA AVX:](#)

[9168100100](#)