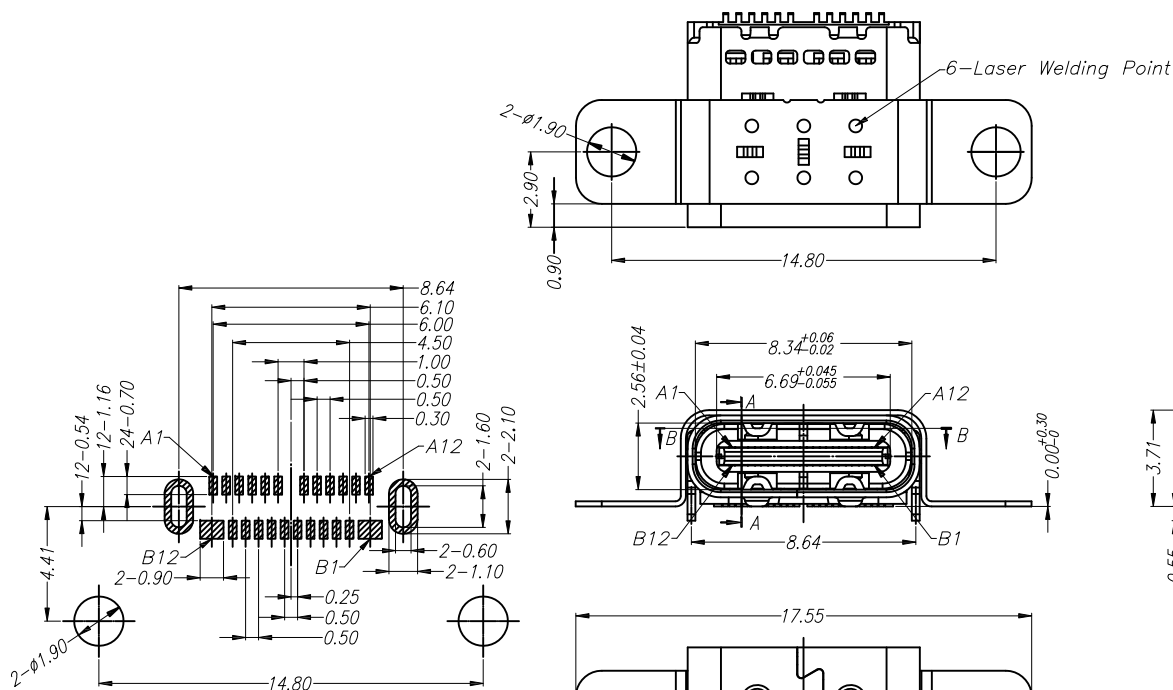


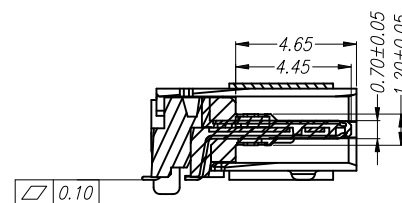
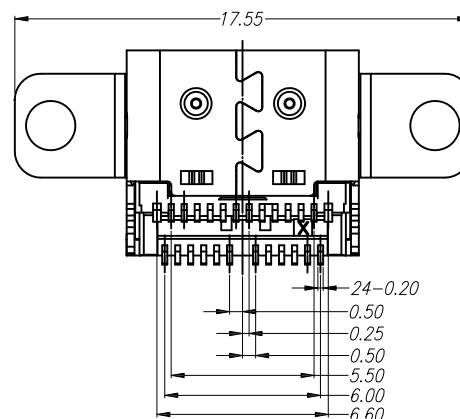
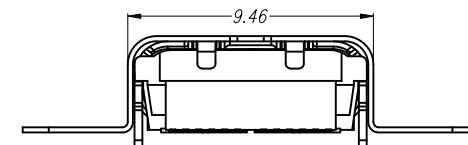
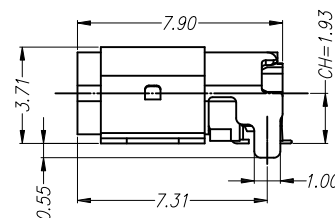
DATE: \_\_\_\_\_ TITLE: \_\_\_\_\_

		2	1	
Rev	AWO #	Description	Date	Appr
-		RELEASED	3/11/22	
A		UPDATE TITLE	6/27/24	WX/RC

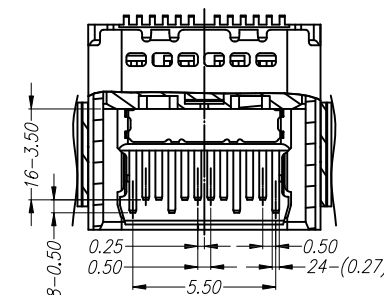


Recommended PCB Layout (Top View)  
Thickness: 0.80mm, Default Tolerance:  $\pm 0.05\text{mm}$

PIN NUMBER	SIGNAL NAME	PIN NUMBER	SIGNAL NAME
A1	GND	B12	GND
A2	SSTxp1	B11	SSRXp1
A3	SSTxn1	B10	SSRXn1
A4	VBUS	B9	VBUS
A5	CC1	B8	SBU2
A6	Dp1	B7	Dn2
A7	Dn1	B6	Dp2
A8	SBU1	B5	CC2
A9	VBUS	B4	VBUS
A10	SSRXn2	B3	SSTxn2
A11	SSRXp2	B2	SSTxp2
A12	GND	B1	GND



Section: A-A



Section: B-B

SPECIFICATIONS:

Material:

Insulator: Hi-temp thermoplastic, rated UL 94V-0

Insulator color: Black

Contacts: Copper Alloy

Mid Plate: Stainless Steel, Nickel plated

Shell: Stainless Steel, Nickel plated

EMI Plate: Stainless Steel

Plating:

Gold flash over Nickel underplate overall

Electrical:

Voltage rating: 5V

Current rating: 5A

LLCR:

VBUS & GND Pins and other Pins: 40 mohms max

Shield: 50 mohms max

Insulation resistance: 100 Mohms min

Dielectric withstanding voltage: 100 VAC for 1 minute

Temperature Rating:

Operating temperature:  $-25^{\circ}\text{C}$  to  $+85^{\circ}\text{C}$

Environmental:

Lead free, RoHS compliant.



UNLESS OTHERWISE SPECIFIED ALL DIMENSIONS  
ARE MILLIMETERS. TOLERANCES: EXCEPT AS NOTED

	MM		ANG
.X	$\pm 0.30$	.X	$\pm$
.XX	$\pm 0.20$	.XX	$\pm$
.XXX	$\pm 0.10$	.XXX	$\pm$

DRAWN	LH	3/11/22
CHECKED	RL	3/11/22
APPROVED		

THIS DRAWING CONTAINS INFORMATION THAT IS PROPRIETARY  
AND SHOULD NOT BE USED WITHOUT PRIOR WRITTEN  
PERMISSION FROM ADAM TECH

# ADAM TECH

909 Rahway Avenue,  
Union, NJ 07083  
Phone: 908-687-5000  
Fax: 908-687-5710

TITLE		UNIVERSAL SERIAL BUS, TYPE C TRANSMISSION EFFICIENCY: Gen2 10Gbps FEMALE, RIGHT ANGLE, WITH FLANG			
SIZE	PART NO.			REV.	
X	USB-C32-S-RA-WF-BK-CS43-T/R			A	
REF:	S00288T		SCALE:	NTS	SHEET 1 OF 1

# Mouser Electronics

Authorized Distributor

Click to View Pricing, Inventory, Delivery & Lifecycle Information:

[Adam Tech:](#)

[USB-C32-S-RA-WF-BK-CS43-TR](#)