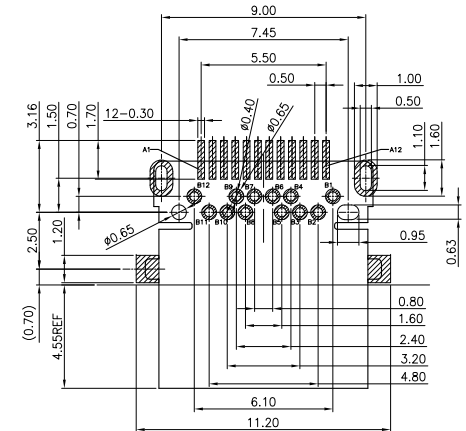
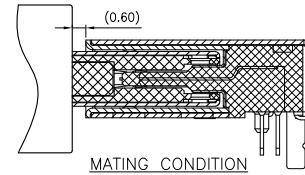
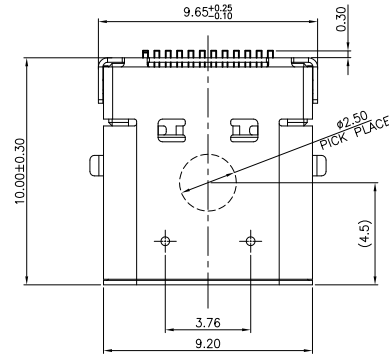
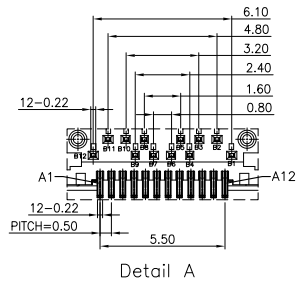
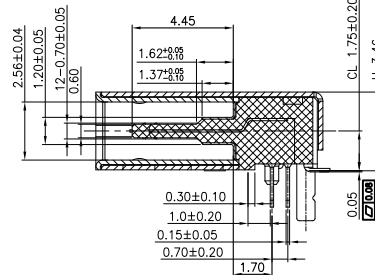
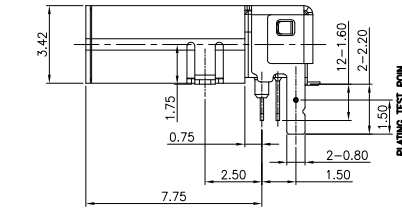
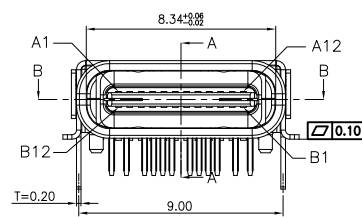
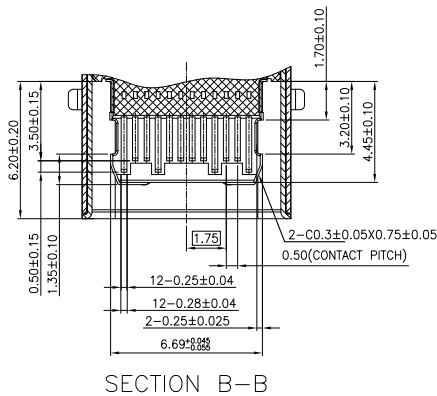


APPROVED: _____
DATE: _____ TITLE: _____

Rev	AWO #	Description	Date	Appr
-		RELEASED	9/12/18	



RECOMMEND P.C.B LAYOUT (COMPONENT SIDE)
TOLERANCE FOR PCB LAYOUT IS ± 0.05
KEEP OUT AREA



SECTION A-A

Pin	Signal Name	Mating Sequence	Pin	Signal Name	Mating Sequence
A1	GND	First	B12	GND	First
A2	SSTXp1	Second	B11	SSRXp1	Second
A3	SSTXn1	Second	B10	SSRXn1	Second
A4	V _{BUS}	First	B9	V _{BUS}	First
A5	CC1	Second	B8	SBU2	Second
A6	Dp1	Second	B7	Dn2	Second
A7	Dn1	Second	B6	Dp2	Second
A8	SBU1	Second	B5	CC2	Second
A9	V _{BUS}	First	B4	V _{BUS}	First
A10	SSRXn2	Second	B3	SSTXn2	Second
A11	SSRXp2	Second	B2	SSTXp2	Second
A12	GND	First	B1	GND	First
SHELL	GND		SHELL	GND	

SPECIFICATIONS:
Material:
Insulator: Hi-temp thermoplastic, rated UL 94V-0
Insulator color: Black
Contacts: Copper alloy
Shell: Stainless steel, Nickel plated
Cover shell: Copper alloy, Nickel plated
Inner ground cover shell: Stainless Steel, Clean
Min plate: Stainless Steel, Clean
Plating:
Gold flash over Nickel underplate on contact area,
Matte Tin over Nickel underplate on solder tails.
Electrical:
Current rating: 5 A (Power supply pin: A1, A4, A9, A12, B1, B4, B9, B12)
1.25 A (Vconn pin)
0.25 A (Other signal pin)
Contact resistance: 40 mohms max 10 mohms change after test,
measure @ 20mV, 100 mA
Insulation resistance: 100 Mohms min.
Dielectric withstanding: 100 VAC RMS
Mechanical:
Insertion force: 5~20N
Withdrawal force: 6~20N After test
Durability: 10,000 Cycles
Temperature Rating:
Operating temperature: -40°C to +85°C
Environmental:
Lead free, RoHS compliant.



PACKAGED ON TAPE & REEL

UNLESS OTHERWISE SPECIFIED ALL DIMENSIONS ARE MILLIMETERS TOLERANCES: EXCEPT AS NOTED	
MM	ANGLE
X. ± 0.50	± 2°
X.X ± 0.30	
X.XX ± 0.20	
X.XXX ± 0.10	
APPROVALS	
DRAWN	HR
CHECKED	OC
APPROVED	
DATE	
9/12/18	
9/12/18	

ADAM TECH
INTERCONNECTS
909 Rahway Avenue,
Union, NJ 07083
Phone: 908-687-5000
Fax: 908-687-5710

TITLE			
UNIVERSAL SERIAL BUS, TYPE C, FEMALE, RIGHT ANGLE, BLACK INSULATOR			
SIZE	PART NO.	REV.	
X	USB-C31-S-RA-CS1D-BK-T/R	-	
REF:		SCALE:	SHEET
S00296T		NTS	1 OF 1

Mouser Electronics

Authorized Distributor

Click to View Pricing, Inventory, Delivery & Lifecycle Information:

[Adam Tech:](#)

[USB-C31-S-RA-CS1D-BK-T/R](#)