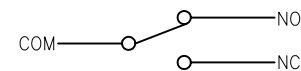
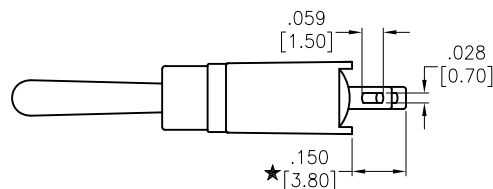
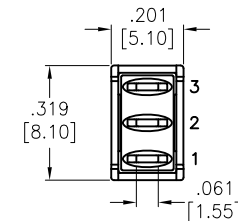
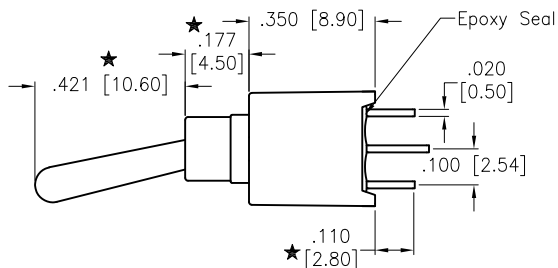
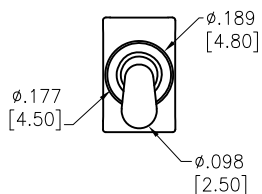


APPROVED: _____

DATE: _____ TITLE: _____

Rev	AWO #	Description	Date	Appr
-		RELEASED	9/27/21	
A		UPDATE SPEC.	9/6/22	LH/AC1



CIRCUIT DIAGRAM
(SPDT) ON-ON

SW-T3-2B-A-T3-X-05

Coding	(Internal) Movable Contact	Terminal Plating
S	Silver Plated	Silver (Gold over silver Term.)
T		Silver (Tin over silver Term.)
R	Gold Plated	Gold Plated
K		Gold Plated (Tin Plated Term.)

SPECIFICATIONS:

Material:

Movable contact: Copper Alloy, See Chart

Terminals: See Chart

Electrical:

Rating: 3 Amps with resistive load @ 125VAC or 28VDC

1.5 Amps with resistive load @ 250VAC

Contact resistance: 20 mohms max initial

Insulation resistance: 1,000 Mohms min

Dielectric withstanding voltage: 1500V RMS @ sea level

Electrical life: 30,000 make and break cycles at full load

Temperature Rating:

Operating temperature: -30°C to +85°C

Environmental:

IP Class: IP67

Lead free, RoHS compliant



UNLESS OTHERWISE SPECIFIED ALL DIMENSIONS
ARE INCHES [MM]. TOLERANCES: EXCEPT AS NOTED

INCHES	HOLES
.X ±.10	ØX ±.10
.XX ±.020	ØXX ±.015
.XXX ±.015	ØXXX ±.010

DRAWN	JJ	9/27/21
CHECKED	RC	9/27/21
APPROVED		

THIS DRAWING CONTAINS INFORMATION THAT IS PROPRIETARY
AND SHOULD NOT BE USED WITHOUT PRIOR WRITTEN
PERMISSION FROM ADAM TECH

ADAM
TECH

909 Rahway Avenue,
Union, NJ 07083
Phone: 908-687-5000
Fax: 908-687-5710

TITLE
POWER TOGGLE SWITCH, TOGGLE
SUB-MINIATURE, SPDT, ON-ON, SOLDER TYPE

SIZE X	PART NO. SW-T3-2B-A-T3-X-05	REV. A
REF: S00198T	SCALE: NTS	SHEET 1 OF 1

Mouser Electronics

Authorized Distributor

Click to View Pricing, Inventory, Delivery & Lifecycle Information:

[Adam Tech:](#)

[SW-T3-2B-A-T3-S-05](#)