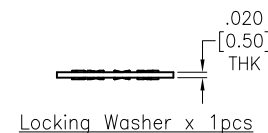
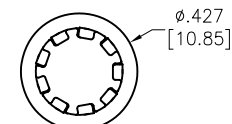
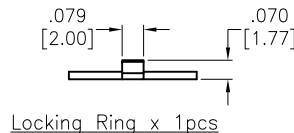
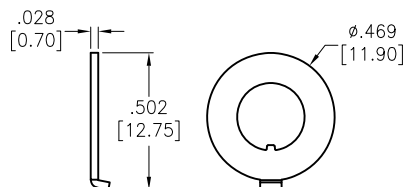
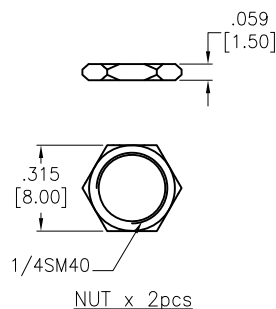
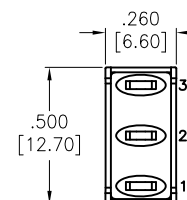
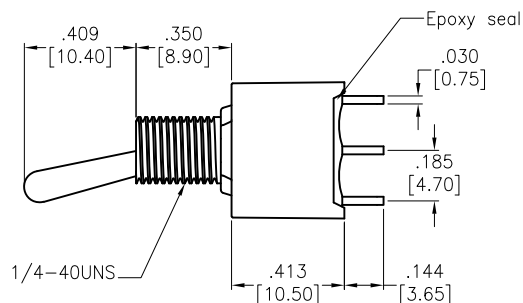
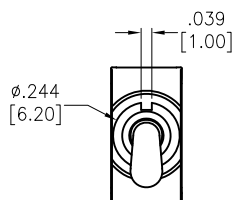
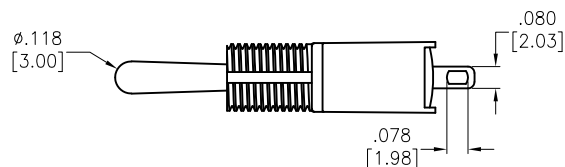


APPROVED: _____

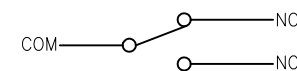
DATE: _____ TITLE: _____

Rev	AWO #	Description	Date	Appr
-		RELEASED	9/27/21	



SW-T2-2B-A-T1-X-03

S=Contact Silver Plated
G=Contact Gold Plated



CIRCUIT DIAGRAM
(SPDT) ON-ON

SPECIFICATIONS:

Material:

Movable contact: Copper Alloy, Silver plated

Terminals: Silver plated with outer layer in Gold plating

Electrical:

Rating: 5 Amps with resistive load @ 125VAC or 28VDC

2 Amps with resistive load @ 250VAC

Contact resistance: 10 mohms max initial

Insulation resistance: 1000 Mohms min

Dielectric withstanding voltage: 1500V RMS @ sea level

Electrical life: 50,000 make and break cycles at full load

Temperature Rating:

Operating temperature: -30°C to +85°C

Environmental:

IP Class: IP67

Lead free, RoHS compliant



UNLESS OTHERWISE SPECIFIED ALL DIMENSIONS
ARE INCHES [MM]. TOLERANCES: EXCEPT AS NOTED

INCHES	HOLES
.X ± .10	ØX ± .10
.XX ± .020	ØXX ± .015
.XXX ± .015	ØXXX ± .010

DRAWN JJ 9/27/21

CHECKED RC 9/27/21

APPROVED

THIS DRAWING CONTAINS INFORMATION THAT IS PROPRIETARY
AND SHOULD NOT BE USED WITHOUT PRIOR WRITTEN
PERMISSION FROM ADAM TECH

**ADAM
TECH**

909 Rahway Avenue,
Union, NJ 07083
Phone: 908-687-5000
Fax: 908-687-5710

TITLE
MINIATURE TOGGLE SWITCH,
SPDT, ON-ON, SOLDER TYPE

SIZE X PART NO. SW-T2-2B-A-T1-X-03 REV. -

REF: S00198T SCALE: NTS SHEET 1 OF 1

Mouser Electronics

Authorized Distributor

Click to View Pricing, Inventory, Delivery & Lifecycle Information:

[Adam Tech:](#)

[SW-T2-2B-A-T1-S-03](#)