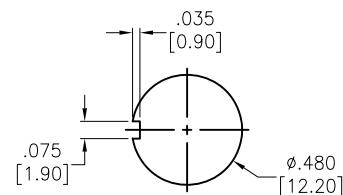
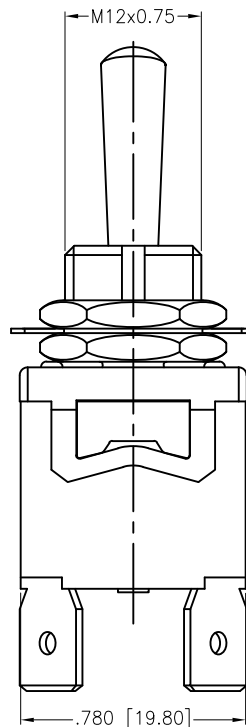
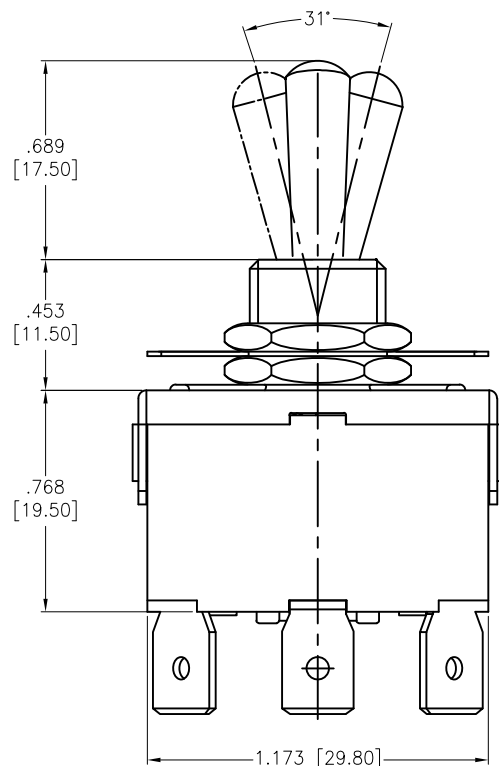
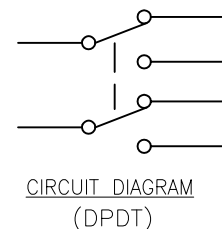


APPROVED: \_\_\_\_\_  
DATE: \_\_\_\_\_ TITLE: \_\_\_\_\_

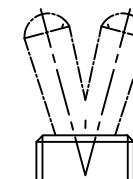
Rev	AWO #	Description	Date	Appr
-		RELEASED	8/10/21	
A		UPDATE SPEC.	10/20/21	WX/RC
B		UPDATED DRAWING	6/15/22	JJ/MC
C		UPDATED COLOR	6/15/22	JJ/MC



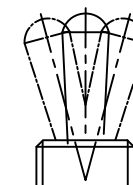
RECOMMENDED  
PANEL CUT-OUT



CIRCUIT DIAGRAM  
(DPDT)



2 WAY



3 WAY

SW-T1-4X-B-K2A

- B=ON-ON
- D=ON-(ON)
- E=ON-OFF-ON
- F=ON-OFF-(ON)
- G=(ON)-OFF-(ON)

#### SPECIFICATIONS:

Material:  
Body: Bakelite, Color: Red Brown  
Lever: Brass, Nickel plated  
Terminal: Brass, Silver plated  
Electrical:

Rating: 6A @ 250V AC  
10A @ 125V AC

Contact resistance: 50 mΩ max  
Insulation resistance: 1000 MΩ min @ 500 VDC  
Dielectric withstanding voltage: 1500V AC for 1 minute  
Electrical Life: 10,000 cycles  
Temperature Rating:

Operating temperature: -25°C to +85°C

Environmental:

Lead free, RoHS compliant



UNLESS OTHERWISE SPECIFIED ALL DIMENSIONS  
ARE INCHES [MM]. TOLERANCES: EXCEPT AS NOTED

INCHES	HOLES
.X ± .10	ØX ± .10
.XX ± .020	ØXX ± .015
.XXX ± .015	ØXXX ± .010

DRAWN	WX	8/10/21
CHECKED	RC	8/10/21
APPROVED		

THIS DRAWING CONTAINS INFORMATION THAT IS PROPRIETARY  
AND SHOULD NOT BE USED WITHOUT PRIOR WRITTEN  
PERMISSION FROM ADAM TECH

**ADAM  
TECH**

909 Rahway Avenue,  
Union, NJ 07083  
Phone: 908-687-5000  
Fax: 908-687-5710

TITLE SWITCH, TOGGLE MEDIUM, DPDT,  
PC TERMINALS .250 [6.35mm]

SIZE X	PART NO. SW-T1-4X-B-K2A	REV. C
REF: S00206C	SCALE: NTS	SHEET 1 OF 1

# Mouser Electronics

Authorized Distributor

Click to View Pricing, Inventory, Delivery & Lifecycle Information:

[Adam Tech:](#)

[SW-T1-4B-B-K2A](#) [SW-T1-4E-B-K2A](#)