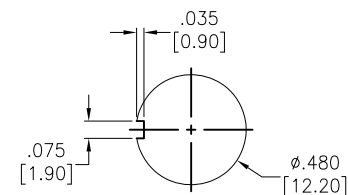
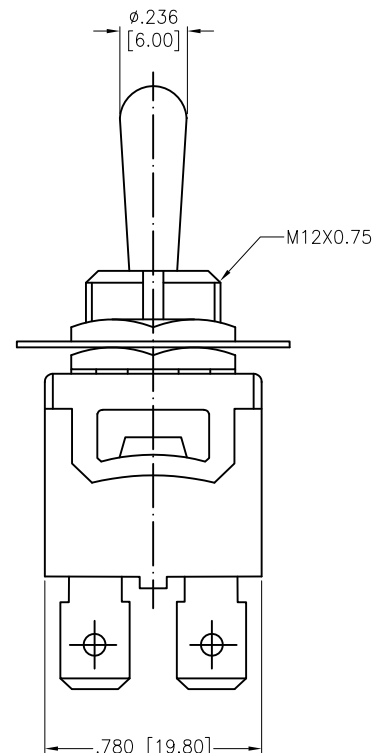
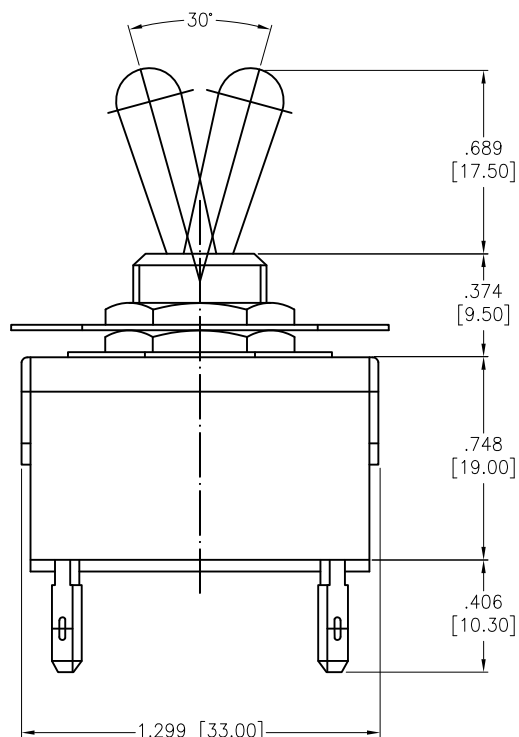
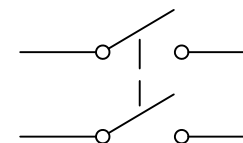


APPROVED: \_\_\_\_\_  
 DATE: \_\_\_\_\_ TITLE: \_\_\_\_\_

Rev	AWO #	Description	Date	Appr
-		RELEASED	8/10/21	



RECOMMENDED  
PANEL CUT-OUT



CIRCUIT DIAGRAM  
(DPST)

SW-T1-3X-E-K2  
 A=ON-OFF  
 C=OFF-(ON)

# SPECIFICATIONS:

## Material:

Body: Bakelite, Color: Black

Lever: Brass, Nickel plated

Terminal: Brass, Silver plated

## Electrical:

Rating: 10A @ 250V AC

15A @ 125V AC

Contact resistance: 50 mΩ max

Insulation resistance: 1000 MΩ min (500VDC)

Dielectric withstanding voltage: 1500V AC for 1 minute

Electrical Life: 10,000 cycles

Temperature Rating:

Operating temperature: -25°C to +85°C

Environmental:

Lead free, RoHS compliant



UNLESS OTHERWISE SPECIFIED ALL DIMENSIONS  
ARE INCHES [MM]. TOLERANCES: EXCEPT AS NOTED

INCHES	HOLES
.X ± .10	ØX ± .10
.XX ± .020	ØXX ± .015
.XXX ± .015	ØXXX ± .010

DRAWN	WX	8/10/21
CHECKED	RC	8/10/21
APPROVED		

THIS DRAWING CONTAINS INFORMATION THAT IS PROPRIETARY  
AND SHOULD NOT BE USED WITHOUT PRIOR WRITTEN  
PERMISSION FROM ADAM TECH

**ADAM  
TECH**

909 Rahway Avenue,  
Union, NJ 07083  
Phone: 908-687-5000  
Fax: 908-687-5710

TITLE SWITCH, TOGGLE MEDIUM, DPST,  
ON-OFF, OFF-(ON), PC TERMINAL .250" [6.35MM]

SIZE X	PART NO. SW-T1-3X-B-K2	REV. -
REF: S00204C	SCALE: NTS	SHEET 1 OF 1

# Mouser Electronics

Authorized Distributor

Click to View Pricing, Inventory, Delivery & Lifecycle Information:

[Adam Tech:](#)

[SW-T1-3A-B-K2](#)