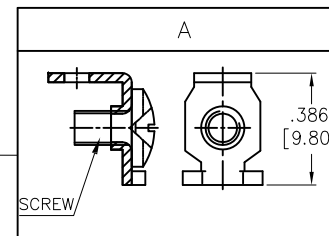
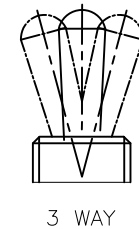
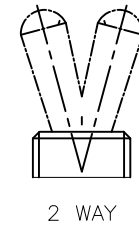
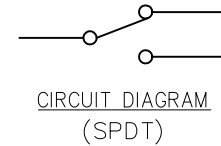
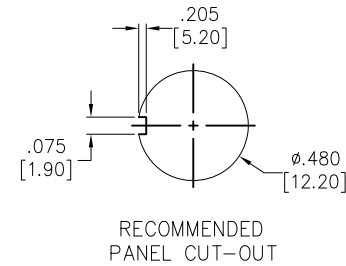
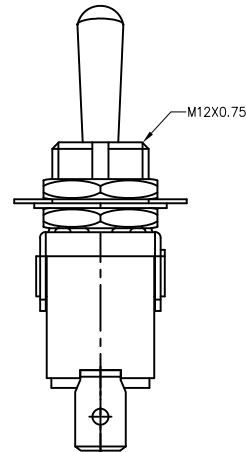
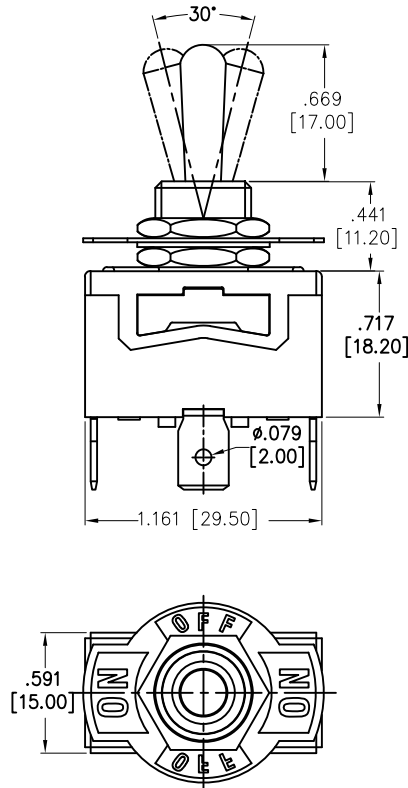


APPROVED: _____
DATE: _____ TITLE: _____

Rev	AWO #	Description	Date	Appr
-		RELEASED	11/11/20	
A		UPDATE SPEC.	8/10/21	WX/RC
B		UPDATE SPEC.	10/20/21	WX/RC
C		UPDATED DRAWING	6/17/22	JJ/MC
D		UPDATED SPEC.	2/9/23	WX/RZ



SW-T1-2X-D-K1
B=ON-ON
D=ON-(ON)
E=ON-OFF-ON
F=ON-OFF-(ON)
G=(ON)-OFF-(ON)

SPECIFICATIONS:

Material:

Body: Bakelite, Color: Red Brown 

Lever: Brass, Nickel plated

Terminal: Brass, Silver plated

Electrical:

Rating: 10A @ 125V AC

6A @ 250V AC

Contact resistance: 50 mΩ max

Insulation resistance: 1000 MΩ min (500VDC)

Dielectric withstanding voltage: 1500V AC for 1 minute

Electrical Life: 10,000 cycles

Temperature Rating:

Operating temperature: -25°C to +85°C

Environmental:

Lead free, RoHS compliant



UNLESS OTHERWISE SPECIFIED ALL DIMENSIONS
ARE INCHES [MM]. TOLERANCES: EXCEPT AS NOTED

INCHES	HOLES
.X ±.10	ØX ±.10
.XX ±.020	ØXX ±.015
.XXX ±.015	ØXXX ±.010

DRAWN	OW	11/11/20
CHECKED	AC	11/11/20
APPROVED		

THIS DRAWING CONTAINS INFORMATION THAT IS PROPRIETARY
AND SHOULD NOT BE USED WITHOUT PRIOR WRITTEN
PERMISSION FROM ADAM TECH

ADAM
TECH

909 Rahway Avenue,
Union, NJ 07083
Phone: 908-687-5000
Fax: 908-687-5710

TITLE
SWITCH, TOGGLE MEDIUM, SPDT,
SCREW LUG

SIZE X	PART NO. SW-T1-2X-D-K1	REV. D
REF: S00206C	SCALE: NTS	SHEET 1 OF 1

Mouser Electronics

Authorized Distributor

Click to View Pricing, Inventory, Delivery & Lifecycle Information:

[Adam Tech:](#)

[SW-T1-2E-D-K1](#)