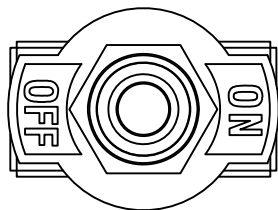


APPROVED: \_\_\_\_\_

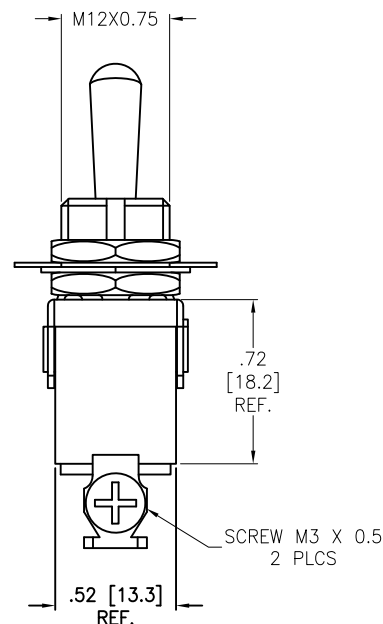
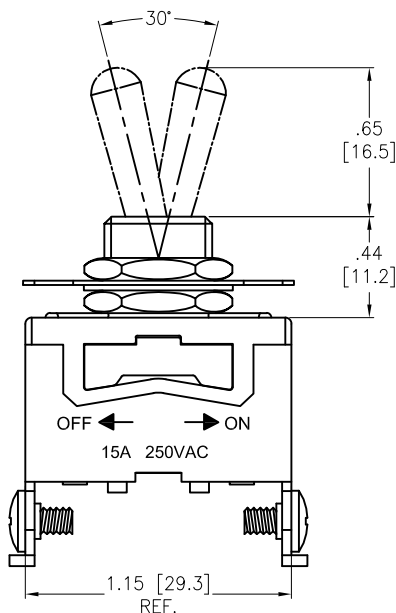
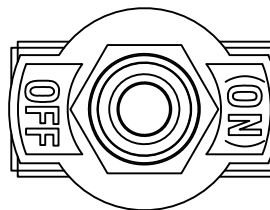
DATE: \_\_\_\_\_ TITLE: \_\_\_\_\_

Rev	AWO #	Description	Date	Appr
-		RELEASED	11/11/20	
A		UPDATE SPEC.	8/10/21	WX/RC
B		UPDATE SPEC.	10/19/21	JJ/RC
C		UPDATED DRAWING	6/21/22	JJ/MC
D		UPDATED COLOR	11/22/22	LH/LL1

SW-T1-1A-D-K1



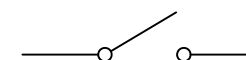
SW-T1-1C-D-K1



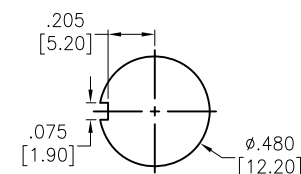
SW-T1-1X-D-K1

A=ON-OFF

C=OFF-(ON)



CIRCUIT DIAGRAM  
(SPST)



RECOMMENDED  
PANEL CUT-OUT

#### SPECIFICATIONS:

##### Material:

Body: Bakelite, Color: Red Brown  $\Delta$

Lever: Brass, Nickel plated

Terminal: Brass, Silver plated

##### Electrical:

Rating: 15A @ 250V AC

Contact resistance: 50 mΩ max

Insulation resistance: 1000 MΩ min (500V DC)

Dielectric withstanding voltage: 1500V AC for 1 minute

Electrical Life: 10,000 cycles

Temperature Rating:

Operating temperature: -25°C to +85°C

Environmental:

Lead free, RoHS compliant



UNLESS OTHERWISE SPECIFIED ALL DIMENSIONS  
ARE INCHES [MM]. TOLERANCES: EXCEPT AS NOTED

INCHES	HOLES
.X ±.10	ØX ±.10
.XX ±.020	ØXX ±.015
.XXX ±.015	ØXXX ±.010

DRAWN	OW	11/11/20
CHECKED	AC	11/11/20
APPROVED		

THIS DRAWING CONTAINS INFORMATION THAT IS PROPRIETARY  
AND SHOULD NOT BE USED WITHOUT PRIOR WRITTEN  
PERMISSION FROM ADAM TECH

**ADAM  
TECH**

909 Rahway Avenue,  
Union, NJ 07083  
Phone: 908-687-5000  
Fax: 908-687-5710

TITLE  
SWITCH, TOGGLE MEDIUM, SPST,  
ON-OFF, OFF-(ON), SCREW LUG

SIZE X	PART NO. SW-T1-1X-D-K1	REV. D
REF: S00206C	SCALE: NTS	SHEET 1 OF 1

# Mouser Electronics

Authorized Distributor

Click to View Pricing, Inventory, Delivery & Lifecycle Information:

[Adam Tech:](#)

[SW-T1-1A-D-K1](#)