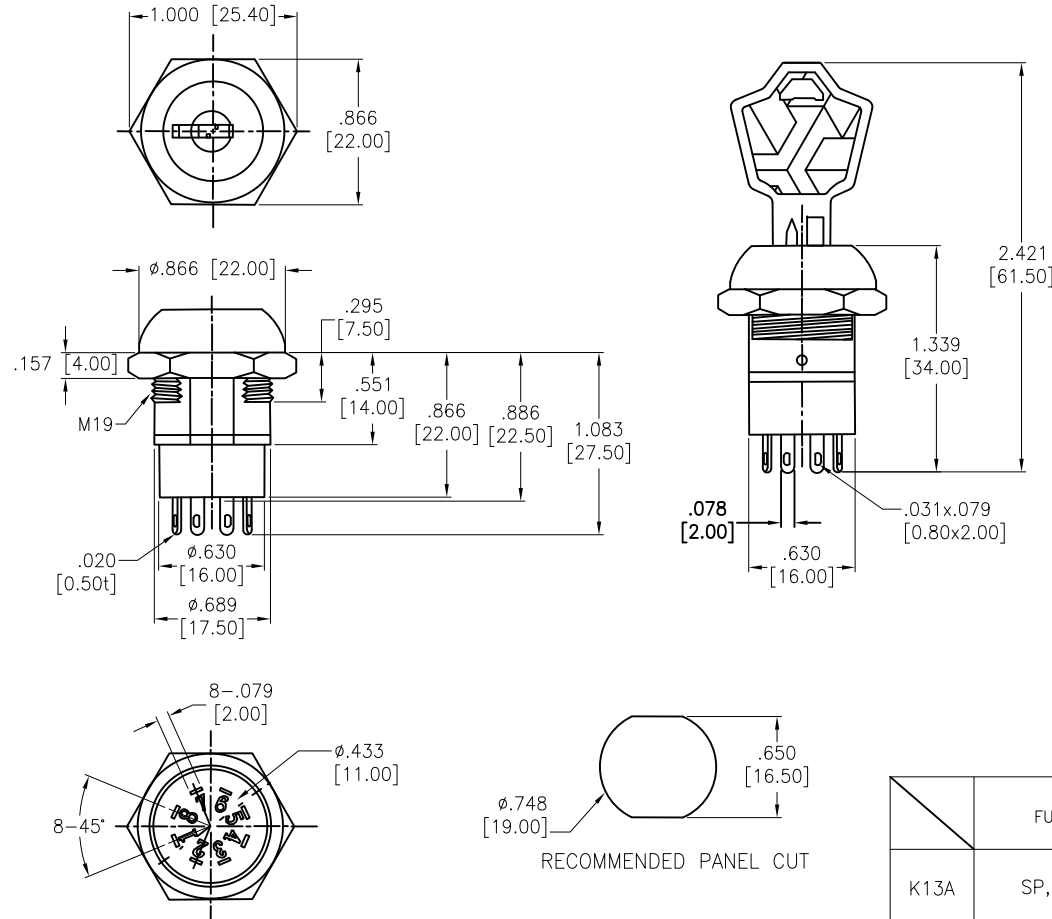


APPROVED: \_\_\_\_\_  
DATE: \_\_\_\_\_ TITLE: \_\_\_\_\_

Rev	AWO #	Description	Date	Appr
-		RELEASED	11/6/20	
A		UPDATE DRAWING.	5/11/21	JJ/RC
B		UPDATE SPEC.	5/18/21	JJ/RC
C		UPDATE SPEC.	5/27/22	WX/MC

ADAM TECH P/N	FUNCTION	LOCK CONFIGURATION
SW-R-K13A-A	SP, ON-ON	1 2
SW-R-K13B-A	DP, ON-ON	1 2
SW-R-K14B-B	SP, ON-ON	1 2
SW-R-K14BA-B	DP, ON-ON	1 2

- DETENT POSITION
- ⊙ KEY PULL POSITION



#### SPECIFICATIONS:

##### Material:

Body: Steel, Polished Chrome, Silver plated

##### Electrical:

The rated load: 125 VAC, 4A

250 VAC, 2A

28 VDC, 4A

Contact resistance: 20 mΩ max

Insulation resistance: 100 mΩ min (500VDC)

Dielectric withstanding voltage: 1000 VAC for 1 minute

Mechanical life: ≥10000 Cycles

Temperature Rating:

-20°C to +85°C

Environmental:

Lead free, RoHS compliant



	FUNCTION
K13A	SP, ON-ON
K13B	DP, ON-ON

	Function
A	Key pulled on both positions. Note: this would be our standard
B	Key pulled on 1 position

UNLESS OTHERWISE SPECIFIED ALL DIMENSIONS ARE INCHES [MM]. TOLERANCES: EXCEPT AS NOTED

INCHES	HOLES
.X ±.10	ØX ±.10
.XX ±.020	ØXX ±.015
.XXX ±.015	ØXXX ±.010

DRAWN	OW	11/6/20
CHECKED	AC	11/6/20
APPROVED		

THIS DRAWING CONTAINS INFORMATION THAT IS PROPRIETARY AND SHOULD NOT BE USED WITHOUT PRIOR WRITTEN PERMISSION FROM ADAM TECH

**ADAM TECH**

909 Rahway Avenue,  
Union, NJ 07083  
Phone: 908-687-5000  
Fax: 908-687-5710

TITLE  
SWITCH, KEY LOCK, 19MM  
PANEL MOUNT, SOLDER TERMINAL

SIZE X	PART NO. SW-R-K13X-X	REV. C
REF: S00206C	SCALE: NTS	SHEET 1 OF 1

# Mouser Electronics

Authorized Distributor

Click to View Pricing, Inventory, Delivery & Lifecycle Information:

[Adam Tech:](#)

[SW-R-K13A-A](#)