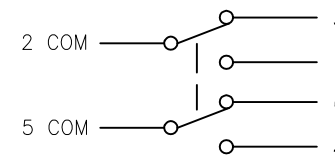
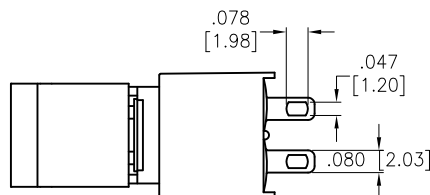
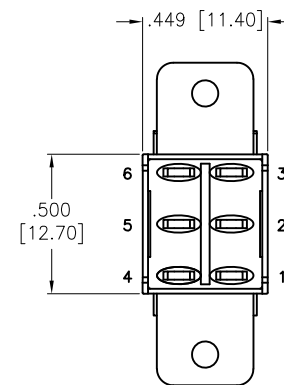
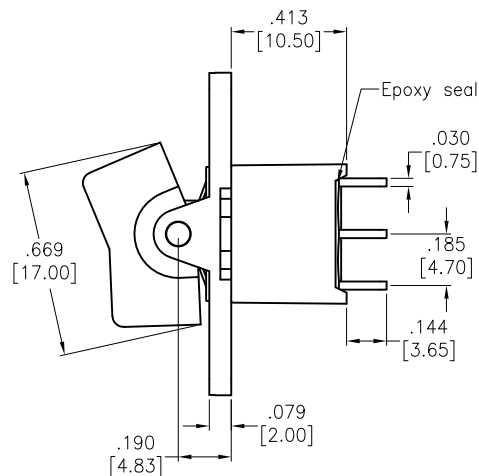
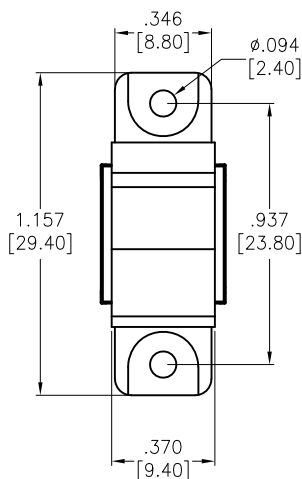
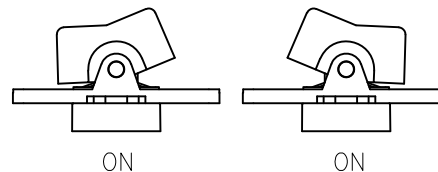


APPROVED: _____
 DATE: _____ TITLE: _____

Rev	AWO #	Description	Date	Appr
-		RELEASED	12/16/20	
A		UPDATE TITLE	6/25/21	WX/RC



CIRCUIT DIAGRAM
(DPDT) ON-ON



SWITCH MARKINGS



SPECIFICATIONS:

Material:

Movable contact: Copper Alloy, Silver plated

Terminals: Silver plated with outer layer in gold plating

Cap Actuator: Plastic, color Black

Electrical:

Rating: 5 Amps with resistive load @ 125VAC or 28VDC

2 Amps with resistive load @ 250VAC

Contact resistance: 10 mohms max initial

Insulation resistance: 1,000 Mohms min

Dielectric withstanding voltage: 1500V RMS @ sea level

Electrical life: 50,000 make and break cycles at full load

Temperature Rating:

Operating temperature: -30°C to +85°C

Environmental:

IP Class: IP67

Lead free, RoHS compliant



UNLESS OTHERWISE SPECIFIED
 ALL DIMENSIONS ARE INCHES [MM]
 TOLERANCES: EXCEPT AS NOTED
 INCHES HOLES
 .X ± .10 Ø.X ± .10
 .XX ± .020 Ø.XX ± .015
 .XXX ± .015 Ø.XXX ± .010

APPROVALS		DATE
DRAWN	OW	12/16/20
CHECKED	AC	12/16/20
APPROVED		

ADAM
TECH

909 Rahway Avenue,
 Union, NJ 07083
 Phone: 908-687-5000
 Fax: 908-687-5710

TITLE
 MINIATURE ROCKER SWITCH, DPDT,
 ON-ON, SOLDER TYPE

SIZE X	PART NO. SW-R2-4B-A-5-11	REV. A
REF: S00198T	SCALE: NTS	SHEET 1 OF 1

Mouser Electronics

Authorized Distributor

Click to View Pricing, Inventory, Delivery & Lifecycle Information:

[Adam Tech:](#)

[SW-R2-4B-A-5-11](#)