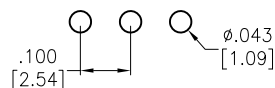
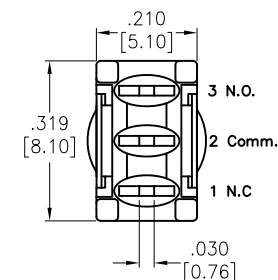
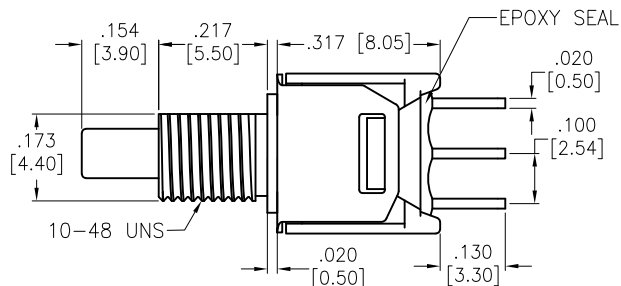
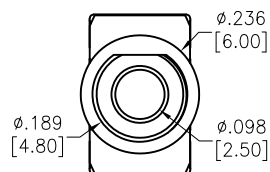
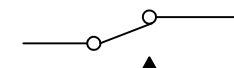


APPROVED: _____
DATE: _____ TITLE: _____

Rev	AWO #	Description	Date	Appr
-		RELEASED	3/5/21	



RECOMMENDED PCB LAYOUT



CIRCUIT DIAGRAM
(SPDT) ON-MOMENTARY

SPECIFICATIONS:

Material:

Movable Contact: Copper Alloy, Silver Plated

Terminal: Copper Alloy, Silver Plated

Electrical:

Rating: 1 Amps with resistive load @ 125VAC or 28VDC

Contact resistance: 20 mΩ max

Insulation resistance: 1,000 Mohms min

Dielectric withstanding voltage: 1,500V RMS @Sea level

Temperature Rating:

Operating temperature: -30°C to +85°C

Environmental:

Lead free, RoHS compliant



UNLESS OTHERWISE SPECIFIED
ALL DIMENSIONS ARE INCHES [MM]
TOLERANCES: EXCEPT AS NOTED
INCHES HOLES

.X	± .10	Ø.X	±.10
.XX	± .020	Ø.XX	±.015
.XXX	± .015	Ø.XXX	±.010

APPROVALS		DATE	
DRAWN	WX	3/5/21	
CHECKED	AC	3/5/21	
APPROVED			

TITLE		PUSHBUTTON SWITCH, ON-MOMENTARY, SPDT COPPER ALLOY SILVER PLATED, PCB TYPE	
SIZE	PART NO.	REV.	
X	SW-PB9-AA00BQE-5	-	
REF:	S00198T	SCALE:	NTS
SHEET 1 OF 1			

ADAM
TECH

909 Rahway Avenue,
Union, NJ 07083
Phone: 908-687-5000
Fax: 908-687-5710

Mouser Electronics

Authorized Distributor

Click to View Pricing, Inventory, Delivery & Lifecycle Information:

[Adam Tech:](#)

[SW-PB9-AA00BQE-5](#)