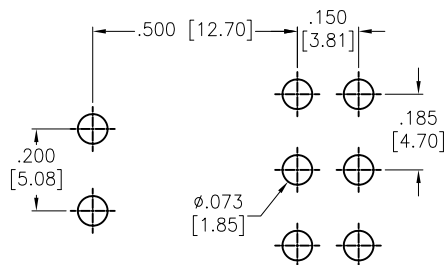
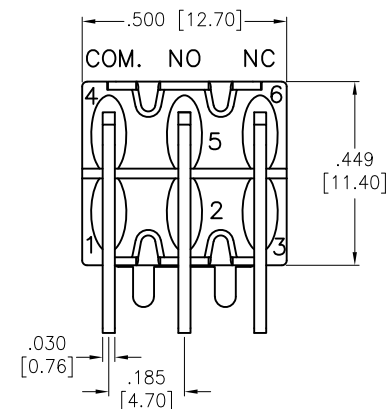
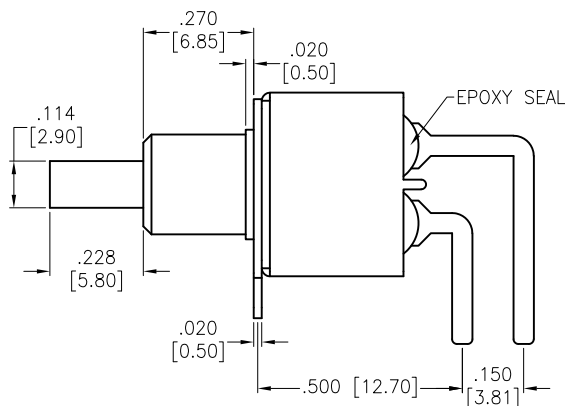
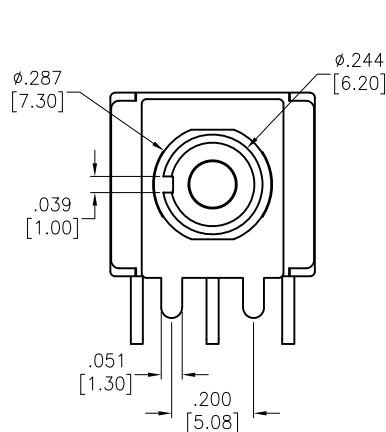
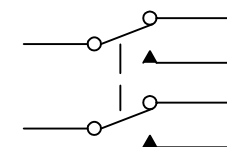


APPROVED: _____
 DATE: _____ TITLE: _____

Rev	AWO #	Description	Date	Appr
-		RELEASED	2/17/21	



RECOMMENDED PCB LAYOUT



CIRCUIT DIAGRAM
(DPDT) ON-MOMENTARY

SPECIFICATIONS:

Material:

Movable Contact: Copper Alloy, Silver Plated

Terminal: Copper Alloy, Silver Plated

Electrical:

Voltage rating: 120VAC or 38VDC

Current rating: 1 Amps

Contact resistance: 10 mΩ max

Insulation resistance: 1,000 Mohms min

Dielectric withstanding voltage: 1,500V RMS @Sea level

Temperature Rating:

Operating temperature: -30°C to +85°C

Environmental:

Lead free, RoHS compliant



UNLESS OTHERWISE SPECIFIED ALL DIMENSIONS ARE INCHES [MM] TOLERANCES: EXCEPT AS NOTED INCHES HOLES .X ± .10 Ø.X ± .10 .XX ± .020 Ø.XX ± .015 .XXX ± .015 Ø.XXX ± .010		<div>ADAM TECH</div> <div>909 Rahway Avenue, Union, NJ 07083 Phone: 908-687-5000 Fax: 908-687-5710</div>	
APPROVALS		TITLE	
DRAWN	LH	2/17/21	
CHECKED	AC	2/17/21	
APPROVED			
		SNAP-ACTING PUSH BUTTON SWITCH, RIGHT ANGLE DPDT, ON-MOMENTARY,SILVER PLATED, PCB TYPE	
SIZE X		PART NO. SW-PB8-BB00B6QE-1	
REF: S00198T		SCALE: NTS	REV. -
		SHEET 1 OF 1	

Mouser Electronics

Authorized Distributor

Click to View Pricing, Inventory, Delivery & Lifecycle Information:

[Adam Tech:](#)

[SW-PB8-BB00B6QE-1](#)