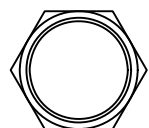
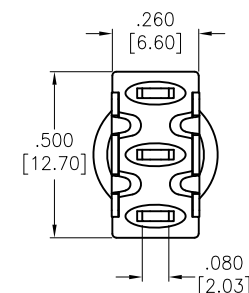
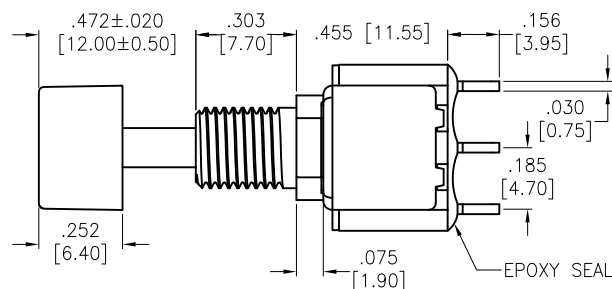
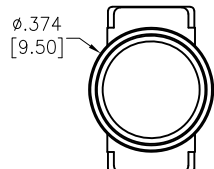
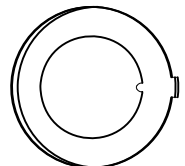
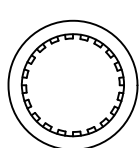


APPROVED: \_\_\_\_\_  
 DATE: \_\_\_\_\_ TITLE: \_\_\_\_\_

Rev	AWO #	Description	Date	Appr
-		RELEASED	3/4/21	



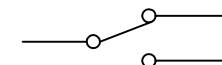
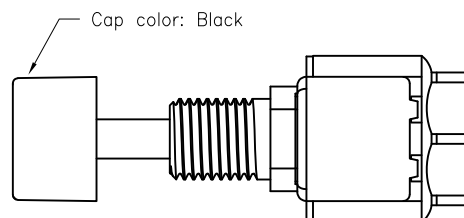
HEX NUT



LOCK WASHER

ANTI ROTATIONAL  
WASHER

INCLUDED HARDWARE



CIRCUIT DIAGRAM  
(SPDT) ON-ON

# SPECIFICATIONS:

## Material:

Movable Contact: Copper Alloy, Silver Plated

Terminal: Copper Alloy, Silver Plated

## Electrical:

## Rating:

6 Amps with resistive load @ 125VAC or 28VDC

3 Amps with resistive load @ 250VAC

Contact resistance: 10 mΩ max

Insulation resistance: 1,000 Mohms min

Dielectric withstanding voltage: 1,500V RMS @Sea level

## Temperature Rating:

Operating temperature: -30°C to +85°C

## Environmental:

Lead free, RoHS compliant



UNLESS OTHERWISE SPECIFIED  
 ALL DIMENSIONS ARE INCHES [MM]  
 TOLERANCES: EXCEPT AS NOTED  
 INCHES HOLES

.X	± .10	Ø.X	±.10
.XX	± .020	Ø.XX	±.015
.XXX	± .015	Ø.XXX	±.010

APPROVALS		DATE
DRAWN	WX	3/4/21
CHECKED	AC	3/4/21
APPROVED		

**ADAM**  
**TECH**

909 Rahway Avenue,  
 Union, NJ 07083  
 Phone: 908-687-5000  
 Fax: 908-687-5710

TITLE  
 PUSHBUTTON SWITCH, ON-ON, SPDT  
 COPPER ALLOY SILVER PLATED, SOLDER TYPE

SIZE X	PART NO. SW-PB8-AA22A1QE-3	REV. -
-----------	-------------------------------	-----------

REF: S00198T	SCALE: NTS	SHEET 1 OF 1
--------------	------------	--------------

# Mouser Electronics

Authorized Distributor

Click to View Pricing, Inventory, Delivery & Lifecycle Information:

[Adam Tech:](#)

[SW-PB8-AA22A1QE-3](#)