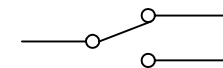


APPROVED: \_\_\_\_\_  
DATE: \_\_\_\_\_ TITLE: \_\_\_\_\_

Rev	AWO #	Description	Date	Appr
-		RELEASED	11/24/20	
A		UPDATED DRAWING	8/12/22	SS



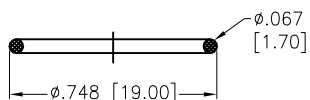
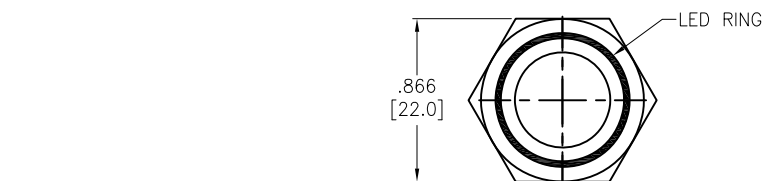
CIRCUIT DIAGRAM  
(SPDT)

Z= Latching  
S= Momentary

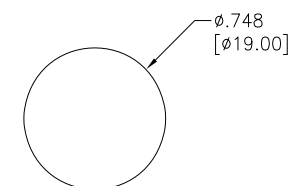
SW-PB2-2EX-A-RX-X-L1A

	LED Color
Blank	Standard Black
W	White
R	Red
G	Green
Y	Yellow (Amber)
B	Blue
O	Orange
S	Silver
RG	Red/Green
RY	Red/Yellow
RB	Red/Blue
RW	Red/White
GB	Green/Blue
RGB	Red/Green/Blue
RGY	Red/Green/Yellow
RGW	Red/Green/White
RBY	Red/Blue/Yellow
RBW	Red/Blue/White

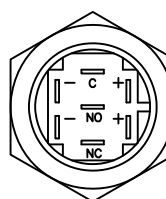
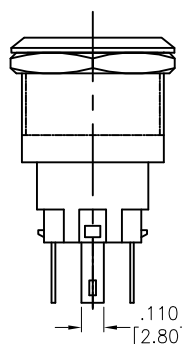
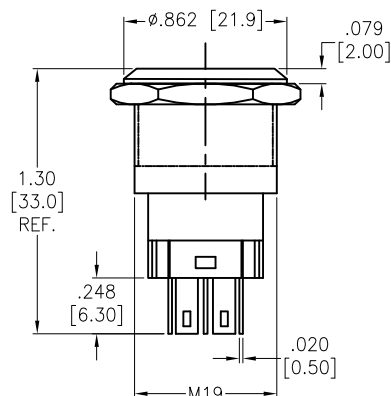
	LED Voltage
1	3V
2	6V
3	12V
4	24V
5	48V
6	110V
7	220V



O-RING



RECOMMENDED  
PANEL CUT-OUT



#### SPECIFICATIONS:

##### Material:

Button: Stainless steel

Bushing: Copper plated Nickel

Solder Terminals: Brass

##### Electrical:

Switch Rating: 5A, 250VAC

Contact resistance: 30 mΩ max

Insulation resistance: 100 Mohms min (500VDC)

Dielectric withstanding voltage: 2000 VAC

Temperature Rating:

Operating temperature: -25°C to +55°C

Environmental:

Lead free, RoHS compliant



UNLESS OTHERWISE SPECIFIED  
ALL DIMENSIONS ARE INCHES [MM]  
TOLERANCES: EXCEPT AS NOTED  
INCHES HOLES

.X	± .10	Ø.X	± .10
.XX	± .020	Ø.XX	± .015
.XXX	± .015	Ø.XXX	± .010

#### APPROVALS

#### DATE

DRAWN	OW	11/24/20
CHECKED	AC	11/24/20
APPROVED		

**ADAM**  
**TECH**

909 Rahway Avenue,  
Union, NJ 07083  
Phone: 908-687-5000  
Fax: 908-687-5710

TITLE  
SWITCH, PUSH BUTTON, PLASTIC WATERPROOF,  
SPDT, 1NO-1NC, ILLUMINATED RING, SOLDER TYPE

SIZE X	PART NO. SW-PB2-2EX-A-RX-X-L1A	REV. A
REF: S00206C	SCALE: NTS	SHEET 1 OF 1

# Mouser Electronics

Authorized Distributor

Click to View Pricing, Inventory, Delivery & Lifecycle Information:

[Adam Tech:](#)

[SW-PB2-2EZ-A-RB-3-L1A](#)