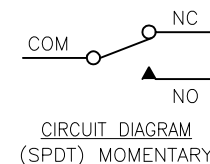
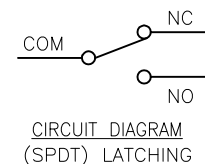
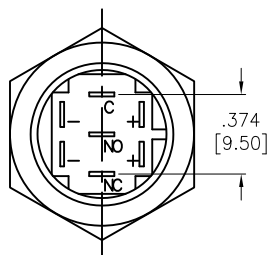
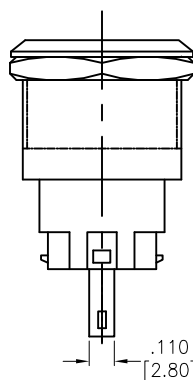
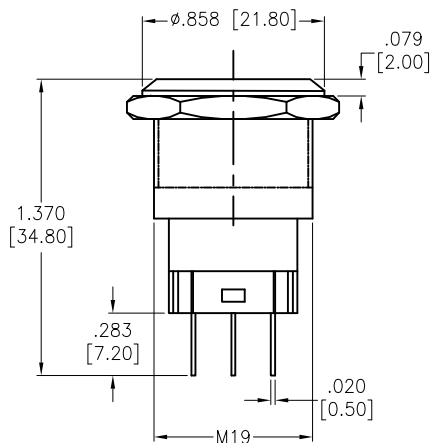
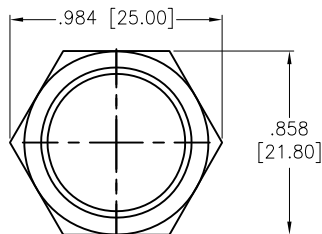


APPROVED: _____
DATE: _____ TITLE: _____

Rev	AWO #	Description	Date	Appr
-		RELEASED	11/25/20	



SW-PB2-2EX-A-L1A

S= Momentary
Z= Latching

SPECIFICATIONS:

Material:
The crust material: Stainless steel, Copper plated Nickel
Electrical:
Switch Rating: 5A, 250VAC
Contact resistance: 30 mΩ max
Insulation resistance: 100 Mohms min (500VDC)
Dielectric withstanding voltage: 2000 VAC
Temperature Rating:
Operating temperature: -25°C to +55°C
Environmental:
Lead free, RoHS compliant



UNLESS OTHERWISE SPECIFIED
ALL DIMENSIONS ARE INCHES [MM]
TOLERANCES: EXCEPT AS NOTED
INCHES HOLES
.X ± .10 Ø.X ± .10
.XX ± .020 Ø.XX ± .015
.XXX ± .015 Ø.XXX ± .010

APPROVALS		DATE
DRAWN	OW	11/25/20
CHECKED	AC	11/25/20
APPROVED		

ADAM
TECH

909 Rahway Avenue,
Union, NJ 07083
Phone: 908-687-5000
Fax: 908-687-5710

TITLE
SWITCH, PUSH BUTTON, PLASTIC WATERPROOF
SPDT, 1NO-1NC, SOLDER TYPE

SIZE X	PART NO. SW-PB2-2EX-A-L1A	REV. -
REF: -	SCALE: NTS	SHEET 1 OF 1

Mouser Electronics

Authorized Distributor

Click to View Pricing, Inventory, Delivery & Lifecycle Information:

[Adam Tech:](#)

[SW-PB2-2EZ-A-L1A](#)