

6

5

4

3

2

1

APPROVED: \_\_\_\_\_

DATE: \_\_\_\_\_ TITLE: \_\_\_\_\_

Rev

AWO #

Description

Date

Appr

-

RELEASED

11/24/20

D

D

C

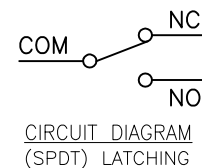
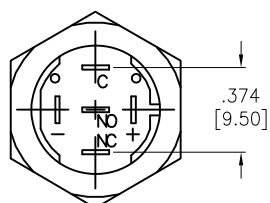
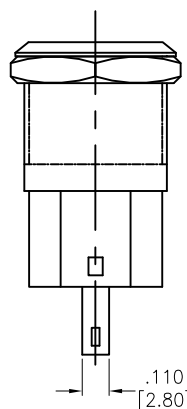
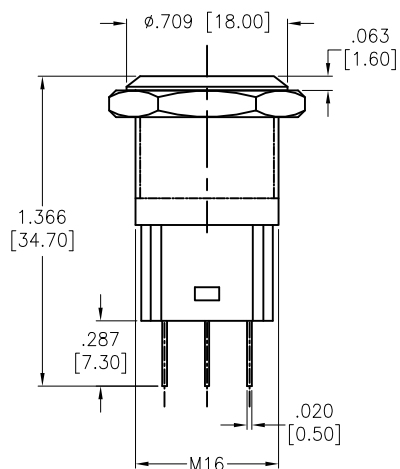
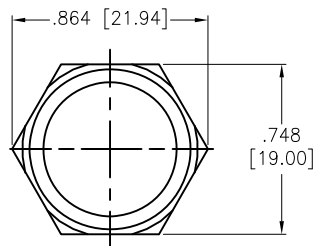
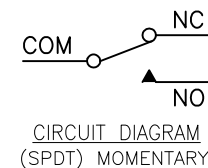
C

B

B

A

A

CIRCUIT DIAGRAM  
(SPDT) LATCHINGCIRCUIT DIAGRAM  
(SPDT) MOMENTARY

SW-PB2-2EX-A-L1

S= Momentary  
Z= Latching

## SPECIFICATIONS:

## Material:

The crust material: Stainless steel, Copper plated Nickel

## Electrical:

Switch Rating: 3A, 250VAC

Contact resistance: 30 mΩ max

Insulation resistance: 100 Mohms min (500VDC)

Dielectric withstanding voltage: 2000 VAC

## Temperature Rating:

Operating temperature: -25°C to +55°C

## Environmental:

Lead free, RoHS compliant

UNLESS OTHERWISE SPECIFIED  
ALL DIMENSIONS ARE INCHES [MM]  
TOLERANCES: EXCEPT AS NOTED  
INCHES HOLES.X ± .10 Ø.X ± .10  
.XX ± .020 Ø.XX ± .015  
.XXX ± .015 Ø.XXX ± .010

## APPROVALS

## DATE

DRAWN

OW

11/24/20

CHECKED

AC

11/24/20

APPROVED

**ADAM**  
**TECH**909 Rahway Avenue,  
Union, NJ 07083  
Phone: 908-687-5000  
Fax: 908-687-5710TITLE  
SWITCH, PUSH BUTTON, PLASTIC WATERPROOF  
SPDT, 1NO-1NC, SOLDER TYPE

SIZE

X

PART NO.

SW-PB2-2EX-A-L1

REV.

-

REF: -

SCALE: NTS

SHEET 1 OF 1

6

5

4

3

2

1

# Mouser Electronics

Authorized Distributor

Click to View Pricing, Inventory, Delivery & Lifecycle Information:

[Adam Tech:](#)

[SW-PB2-2EZ-A-L1](#)